



Woolsey Operating Company, LLC

Scale 1:240 (5"=100') Imperial
Measured Depth Log

Well Name: Jahay A GU #2
Location: NE NW SE
License Number: 15-007-23656
Spud Date: February 25, 2011
Surface Coordinates: 2310' FSL, 1650' FEL Section 1 Twp 34S-Rge 11W
Field: Roundup South
Bottom Hole Coordinates: Verticle Hole
Region: Barber County, Kansas
Drilling Completed: March 7, 2011
Ground Elevation (ft): 1418' K.B. Elevation (ft): 1429'
Logged Interval (ft): 5145' To: Surface Total Depth (ft): 5145'
Formation: Total Depth in Simpson Group
Type of Drilling Fluid: Chemical Displaced at 3385'
Printed by MUD.LOG from WellSight Systems 1-800-447-1534 www.WellSight.com

OPERATOR

Company: Woolsey Operating Company,LLC
Address: 125 N. Market, Suite 1000
Wichita, KS 67202

GEOLOGIST

Name: Bill Klaver
Company: Woolsey Operating Co. LLC
Address: 125 N. Market, Wichita Kansas, 67202

COMMENTS

Surface Casing: Set 5 joints 10 3/4" X 28# at 215' KB (tally 200') w/240 sx Class A, 2% gel, 3% cc. Plug down 11am on 2/25/11. Cement did circulate.
Production Casing: 5 1/2"

Deviation Surveys: 1 at 220', 3/4 at 1228', 1/2 at 1695', 1/4 at 2197', 1/4 at 2729', 1/2 at 3508', 3/4 at 4102', 1/4 at 4474', 1/4 at 4654', 1/2 at 5145'.

Pipe Strap @ 4654', Strap: 4596.03', Board: 4601.03', Strap 5' long, No correction was made to the board.

Duke Drilling Rig 10 Bit Record:

#1 14 3/4" HTC RR in at 0' out at 215'

#2 7 7/8" Varel HE-21 in at 215' out at 4654', 4439' in 108 hours

#3 7 7/8" Varel HE-29 in at 4654', out at 5145', 491' in 28 hours

Gas Detector: Woolsey Operating Co. Gas Trailer #2

Mud System: Mud Co. Brad Bortz, Aaron Rush, Engineers

DSTs: Superior Testers Enterprises, Jared Scheck, Tester

OH Logs: Superior Well Services. Dual Induction Laterolog w/SP, CNL-FDC w/PE, GR & Caliper.


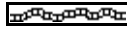
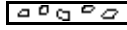

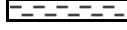

DSTs







DST #1 Mississippi, 4532'-4654', 30"-60"-60"-120", SB BOB 3 minutes into IFP. Rec: 815' GIP, 40' drilling mud. IHP 2300, IFP 99-98, ISIP 646, FFP 91-102, FSIP 795, FHP 2275, BHT 124 degrees.


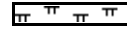

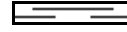


CREWS






Joe Livingston, Tool Pusher
Scott Edward, Daylights
Colby Crawford, Evening
Alex Ordonez, Morning
Ron Burns, Relief

ROCK TYPES

 Anhy
 Bent
 Brec
 Cht
 Clyst
 Coal

 Congl
 Sdy dolo
 Shy dolo
 Dol
 Gyp
 Sdy lmst

 Lmst
 Mrlst
 Salt
 Shale
 Sltst
 Ss

 Black sh
 Gry sh
 Shale
 Shysltst
 Sltys

ACCESSORIES

MINERAL

- Anhy
- Arg
- Bent
- Bit
- Brecfrag
- Calc
- Carb
- Chtdk
- Chtlt
- Dol
- Ferrpel
- Ferr
- Glau
- Gyp
- Marl
- Nodule
- Phos
- Pyr
- Salt
- Sandy
- Silt

- Chlorite
- Dol
- Sand
- Slty

FOSSIL

- Algae
- Amph
- Belm
- Bioclst
- Brach
- Bryozoa
- Cephal
- Coral
- Crin
- Echin
- Fish
- Foram
- Fossil
- Gastro
- Oolite
- Ostra

- Pelec
- Pellet
- Pisolite
- Plant
- Strom
- Fuss
- Oomoldic

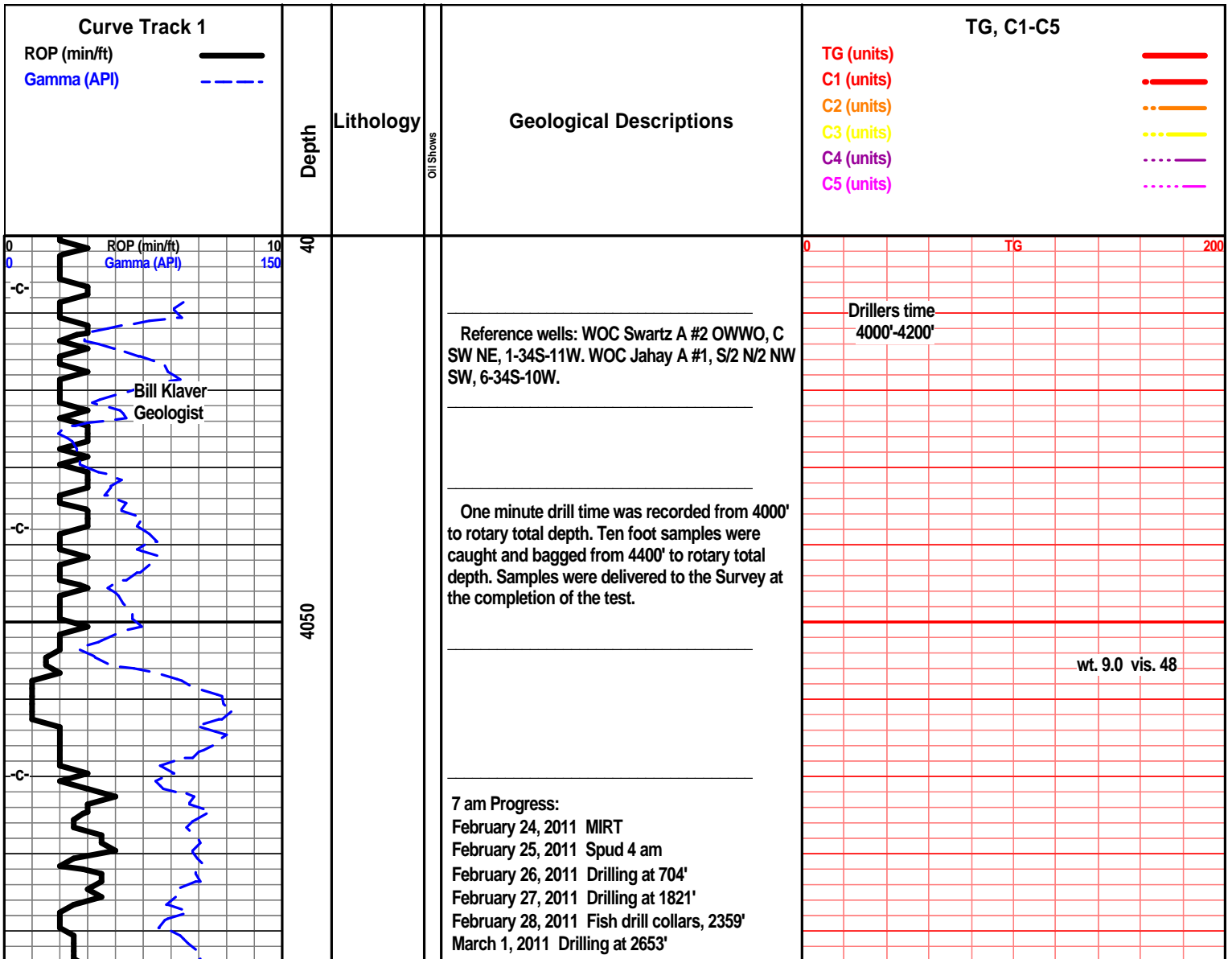
- Grysh
- Gryslt
- Lms
- Sandylms
- Sh
- Slstn

STRINGER

- Anhy
- Arg
- Bent
- Coal
- Dol
- Gyp
- Ls
- Mrst
- Slstn
- Ssstn
- Carbsh
- Clystn
- Dol

TEXTURE

- Boundst
- Chalky
- Cryxln
- Earthy
- Finexln
- Grainst
- Lithogr
- Microxln
- Mudst
- Packst
- Wackest



March 2, 2011 Drilling at 3383'
 March 3, 2011 Drilling at 3985'
 March 4, 2011 Short trip at 4474'
 March 5, 2011 TOOH w/DST #1 at 4654'
 March 6, 2011 CFS at 4950' in Viola
 March 7, 2011 RTD at 6 am

Survey 4102'
 3/4 degree

wt. 9.1 vis. 47

Scale Change
 TG

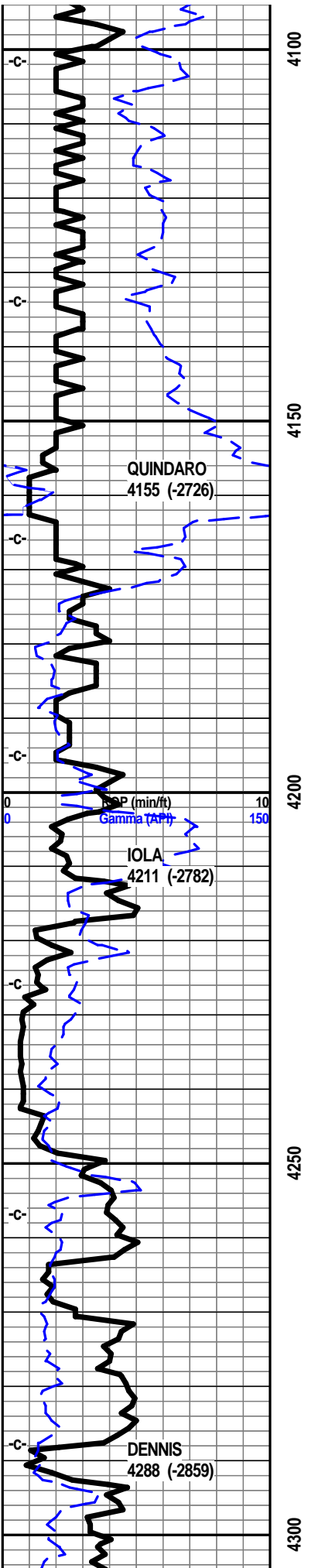
Tooke Time

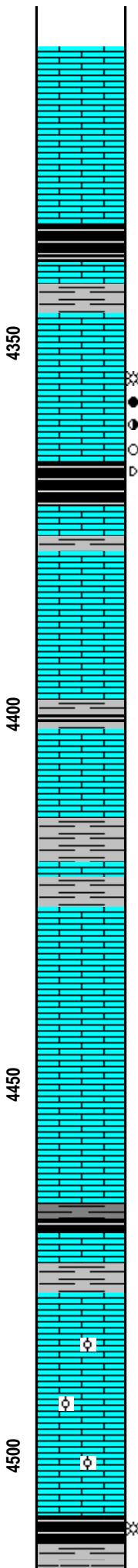
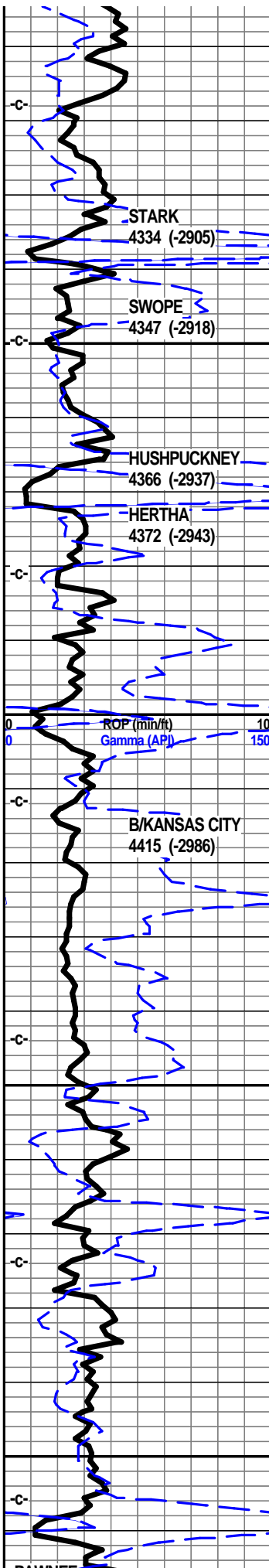
TG

6 pm 4250'
 Thursday
 March 3, 2011

Gas on

- E-Log Tops:**
- Herington 1784 (-355)
 - Onaga 2626 (-1197)
 - Wabaunsee 2683 (-1254)
 - Topeka 3118 (-1689)
 - LeCompton 3435 (-2006)
 - Kanwaka 3447 (-2018)
 - Heebner 3644 (-2215)
 - Toronto 3653 (-2224)
 - Douglas Shl 3698 (-2269)
 - Stalnaker 3945 (-2516)
 - Quindaro 4156 (-2727)
 - Kansas City 'F' 4173 (-2744)
 - Kansas City 'Iola' 4213 (-2784)
 - Kansas City 'Drum' 4255 (-2826)
 - Dennis 4288 (-2859)
 - Stark 4335 (-2906)
 - Swope 4349 (-2920)
 - Hushpuckney 4367 (-2938)
 - Hertha 4374 (-2945)
 - B/Kansas City 4419 (-2990)
 - Pawnee 4516 (-3087)
 - Cherokee Grp 4561 (-3132)
 - Mississippi 4605 (-3176)
 - C2A 4607 (-3178)
 - C2 4659 (-3230)
 - C1 4753 (-3324)
 - Northview Shl 4804 (-3379)
 - Compton 4813 (-3384)
 - Kinderhook 4819 (-3390)
 - Woodford 4898 (-3469)
 - Misener Sd 4930 (-3501)
 - Viola 4936 (-3507)
 - Simpson Grp 5031 (-3602)
 - Wilcox 5046 (-3617)
 - McLish Shl 5105 (-3676)
 - LTD 5145 (-3716)





Oil and Gas Show Legend

- ☒ Gas Show
- Even Stain/Saturation
- ◐ Spotted Stain/Saturation
- Questionable
- ◑ Dead/Gilsonitic

Ist crm tan f sli med xln gran chlky foss frags, foss pelletal/ool, pp/moldic por, calc xln fill, tr arg,

Ist crm tan gry in prt f sli med xln gran sub chlky foss frags, calc xln fill, tr arg

shl gry med gry, silty calc, Ist tan lt gry f xln gran sub chlky foss frags, calc xln fill, tr arg, chrt tan shrp frsh foss

Ist gry tan gry, f xln sub chlky, blk gran pcs, foss frags, calc xln fill, arg, shl gry med gry silty calc

shl gry blk, silty calc

Ist crm tan buff f xln blkly flky ang pcs, tr sub chlky mstly dns, hrd, tr micro foss frags

Ist crm tan buff f vf xln blkly ang gran pcs, tr sub chlky tr micro foss, tr calc xln fill

Ist crm buff tan off wht f vf xln dns hrd blkly micro foss frags, tr calc xln fill,

Ist crm buff tan f vf xln dns hrd blkly ang tr sub chlky

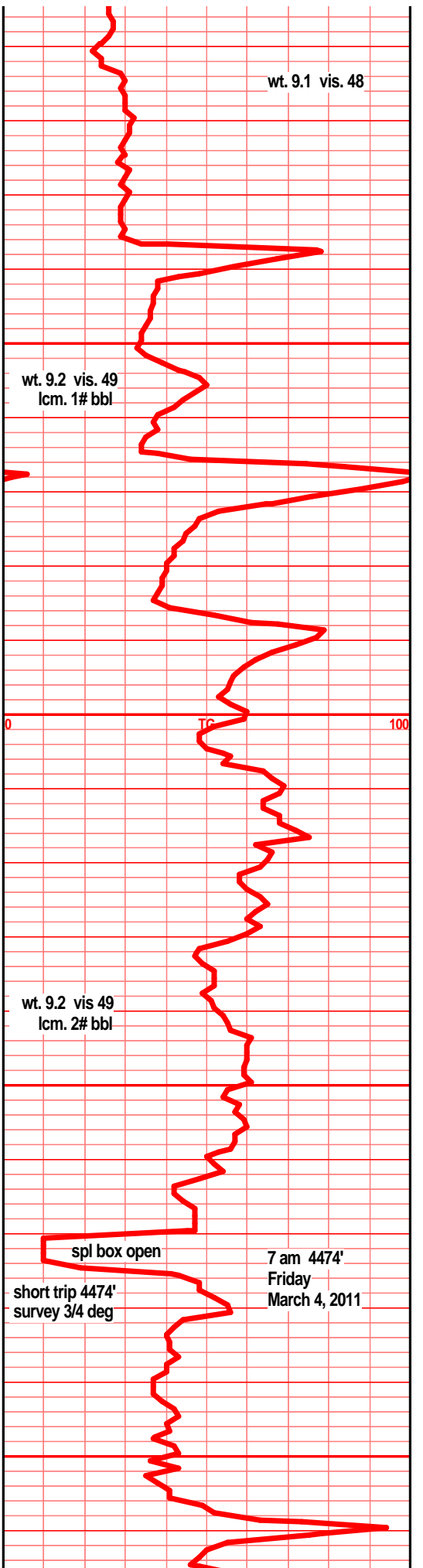
shl gry blk, tr blk carb text, shl gry lt green, silty gritty calc in prt

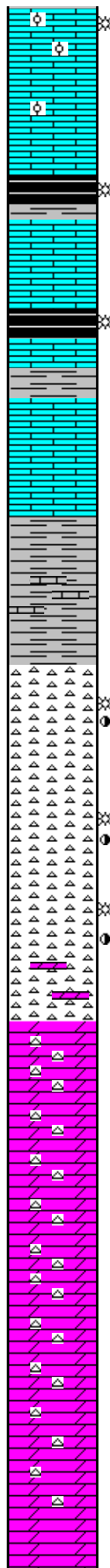
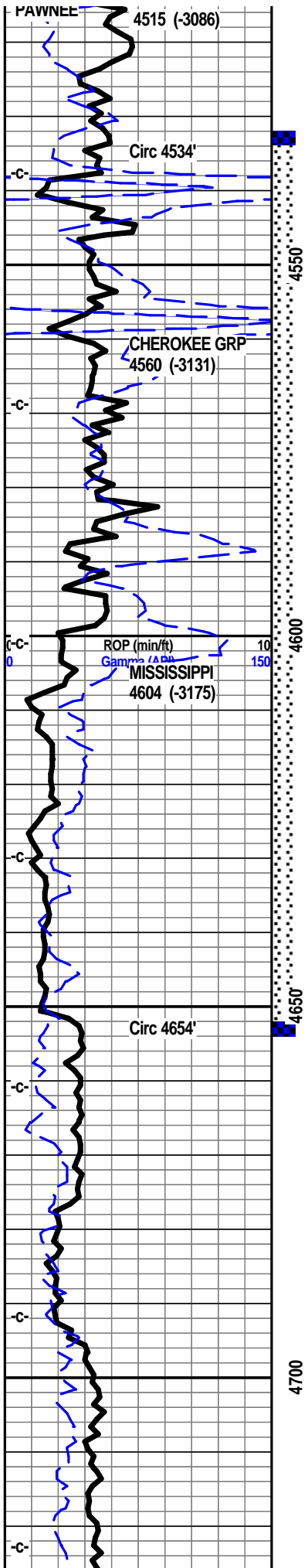
shl gry green silty gritty gran, calc, Ist dull gry vf xln dns hrd blkly arg silty, tr foss frags,

Ist crm buff tan f vf xln blkly ang dns hrd pcs, tr micro foss, calc xln fill,

Ist crm buff off wht tan f vf xln blkly ang hrd pcs, tr calc xln fill, tr micro foss frags,

shl drk gry/blk, carb in prt, wxy grsy, gas bubs, shl gry med gry blkly ang pcs calc in prt





lst crm buff tan f vf xln dns hrd ang blkly, foss frags, foss ool/pelletal, sub chlky, micro ool, hvy calc xln fill, tr pp por, inter xln por, mstly dns, fair show gas bubs/brkn nodor, nsfo, dull UV,

lst buff tan off wht f xln dns hrd blkly ang sub chlky calc xln fill tr micro foss

shl drk gry, blk, blk carb, wxy grsy, gas bubs, lst tan buff, dull tan vf xln blkly dns hrd sub chlky

lst gry tan lt brn f vf xln dns hrd blkly ang arg, tr micro foss, sub chlky, massive, much gry blk shls in spl

shl gry drk gry blk, blk carb, wxy grsy, abun gas bubs, lst tan gry brn vf xln dns hrd blkly ang arg, tr micro foss

lst tan buff lt gry f vf xln dns hrd blkly ang arg, massive, earthy, tr sub chlky tr micro foss,

lst, tan gry lt brn f vf xln dns hrd blkly arg, sub chlky mstly blkly dns arg hard

shl gry, gry green, silty, gritty, calc in prt, pyritic, snd grn inclu,

sily sst gry lt brn vf grnd, sub ang grns, hvy clay fill, v/arg, silty

chrt wht off wht lt gry in prt, shrp, frsh, opaq, tr frac text, tr gas, chrt wht off wht tan shrp frsh w/weath trip text edge, pp/moldic por, stain, brn stain, SSFO, sli odor.

chrt wht lt tan tr lt gry shrp frsh opaq blkly pcs, tr weath trip text edge, mstly frsh shrp opaq, chrt wht gran spongy trip text, w/brn stain edge, pp/moldic por, SFO, gas bubs, odor

chrt gry tan smokey in prt, shrp, frsh opaq, tr vit, blkly ang pcs, w/weath trip text edge, pp/moldic por, tr vis frac por, brn stain, drk brn SFO, gas bubs, fair odor, dull UV, tr lt gry/green dolo edge, tr glau,

dolo chrty dolo, dolo tan crm lt green/tan f vf xln blkly and dns hrd pcs, tr silic text, tr glau, chrt inclu, wht lt gry shrp frsh opaq foss, tr weath trip edge text, pp moldic por, tr brn stain, tr gas bubs, chrt lt gry off wht shrp frsh opaq

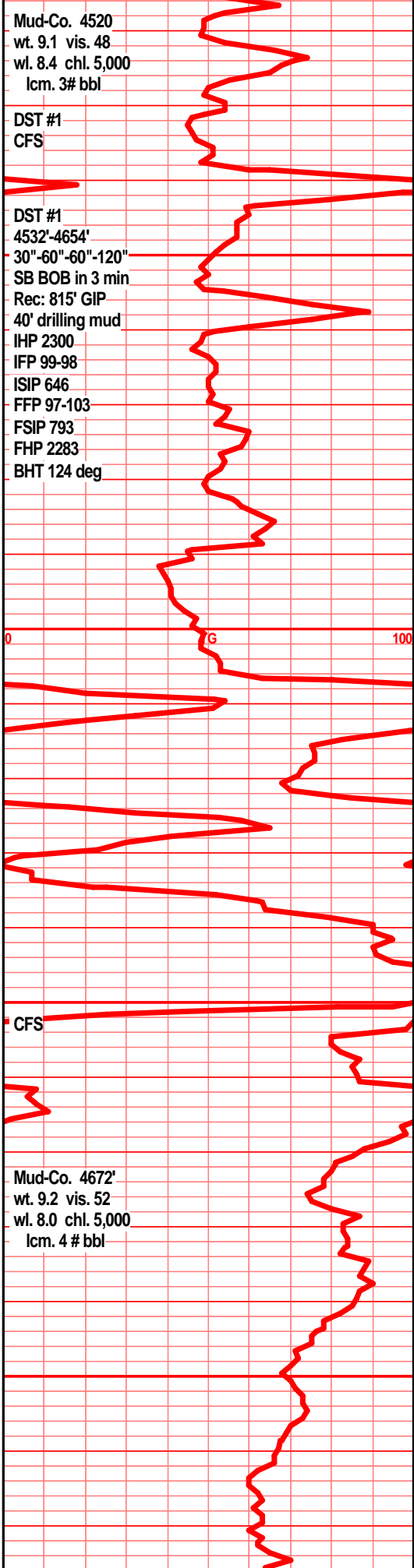
dolo chrty dolo, crm tan dull tan, f vf xln bky dns hrd tr glau, tr silic text, tr brn stain, nodor, chrt inclu, tan lt gry shrp frsh blkly opaq

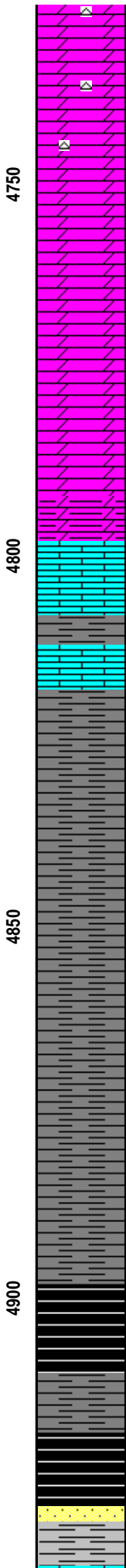
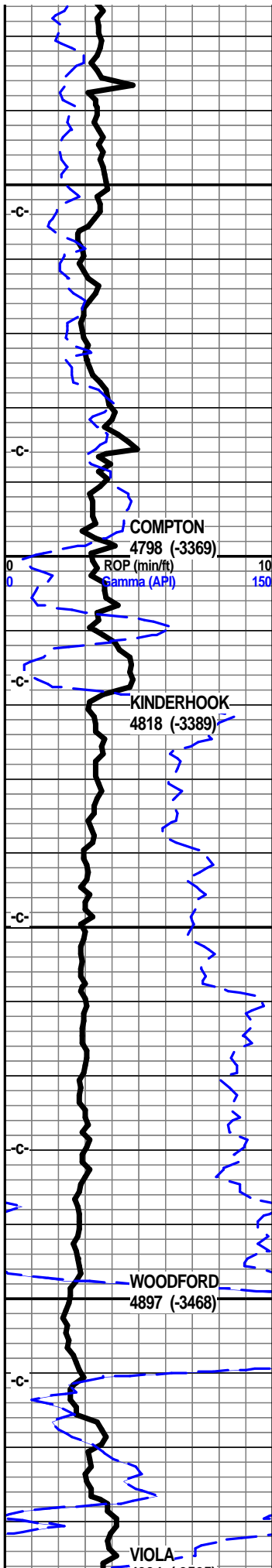
dolo crm tan dull tan f vf xln blkly dns hrd glau, tr silic text, fnly sucr in prt, NVP, tr brn stain, tr gas bubs, sli odor, chrt lt gry wht tan shrp frsh opaq, tr w/weath trip text edge, tr pp/moldic por, brn stain, gas bubs, dec show w/depth

dolo crm tan bec drkr, lt gry grn f vf xln dns hrd blkly ang hrd, tr silic text, glau in prt, tr chrty, chrt wht gry shrp frsh opaq

dolo gry med gry f vf xln blkly dns hrd ang pcs, silic text, arg in prt, tr chrty, chrt gry shrp opaq

dolo gry med gry f vf xln dns hrd blkly ang pcs,





silic text in prt, arg in prt, tr gry smokey snrp irsn
foss opaq chrt

dolo gry med drk gry vf xln dns hrd blkly ang arg,
silty in prt, silic text

dolo silty dolo tan gry med gry f vf xln dns hrd
blkly tr silic text, arg, shls gry dolo/silty

dolo, silty shly dolo, gry tan med gry f vfr xln
gran blkly dns hrd ang pcs,

dolo silty dolo drk tan lt gry tr med gry f vf xln
bky dns hrd, silic text, chrt wht lt gry shrp opa
foss

dolo tr dilty dolo tan lt gry f vf xln gran blkly dns
tr silic text, chrt wht shrp frsh opa

dolo silty dolo, lt gry tan, dull tan, f vf xln gran
dns hrd blkly arg, silty, silic text, chrt wht shrp
frsh

dolo crm dull gry f vf xln dns hrd blkly tr silic
text, silty gritty arg

aa, lst wht f sli med xln flky sub chlky tr micro
foss,

shl gry drk gry, drk green silty, gritty,

shl gry gry/green, gry/blk, silty gritty, pyritic in
prt, bedded

shl drk gry gry drk green silty, gas

shl gry drk gry blk gry/drk green silty pyritic
bands gritty

shl gry, med drk gry silty gritty, gas bubs

shl gry drk gry blk, gritty silty, dolo in prt, pyritic
bands, gas bubs

shl gry drk gry, gry/drk green, blk, silty gritty,
pyritic, gas bubs along frac

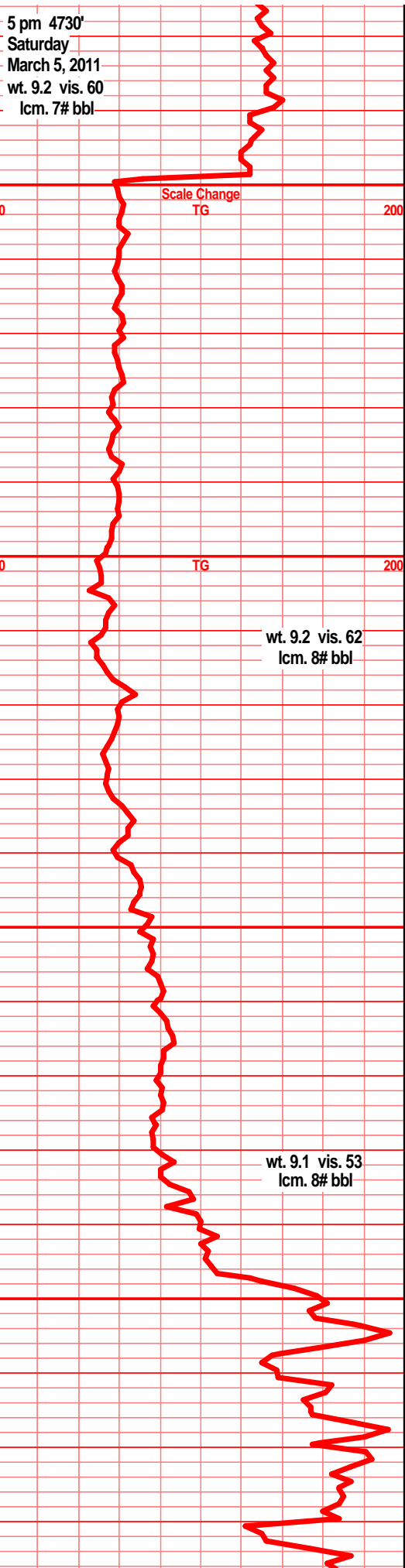
shl gry drk gry blk, silty, gritty, bedded, tr
banded

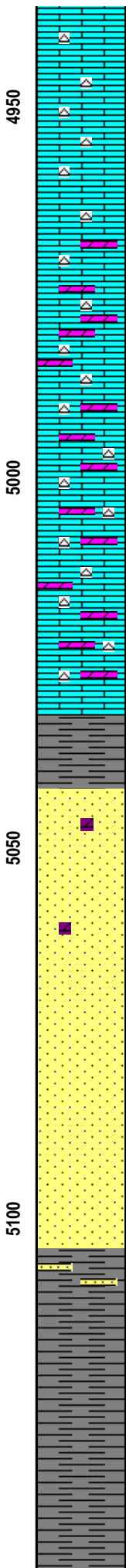
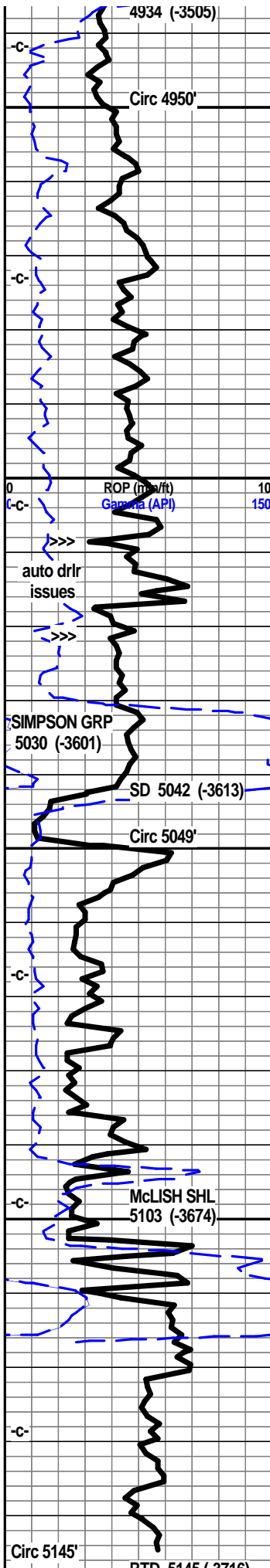
shl blk, deep red/brn, reddish blk, blk carb, blkly
ang pcs, abun gas bubs

shl drk gry/blk. blk, blk carb in prt, blkly ang pcs,
abun gas bubs

shl drk brn/reddish, drk brn/blk, carb, organic,
grsy, abun gas bubs

sst clr, gry/brn clstrs, f sli med grnd, ang grns,
prly srted, w/cem, sub fria to tite, mstly hrd blkly
ang clstrs, pyritic, v/arg, clay/mineral fill, tr gas





bubs, dead blk stain, filmy SFO, sli odor w/brkn

lst wht, off wht, wht/lt gry tint, f med xln blkly flky ang pcs, sub chlky, inter xln por, calc xln fill, tr chrt wht shrp frsh opaqa blkly

lst wht tan, wht/gry mott f sli med xln blkly ang flky sub chlky pyritic, dull tan/gry dolo edge in prt, chrt dull tan gry shrp frsh foss pyritic

lst tan off wht gry mott f sli med xln blkly ang flky sub chlky, inter xln por, pyritic, tan brn dolo edge, chrt n prt, chrt dull tan gry shrp frsh foss opaqa

lst dolo in prt, tan gry brn mott f xln blkly dns hrd, tr foss, flky sub chlky, chrt, chrt dull tan gry shrp frsh foss opaqa

lst dolo in prt, tan gry mott, incr brn, f vf xln dn shrd blkly tr sub chlky, dolo edge, chrt, chrt dull tan gry shrp frsh opaqa

lst/dolo drk tan brn f vf xln dns hrd blkly, tr silic text in prt, chrt, much chrt, gry brn shrp frsh foss opaqa

lst dolo in prt, f vf xln dns hrd blkly ang dns, dolo edge, chrt, chrt dull tan brn shrp frsh opaqa

lst/dolo tan brn f vf xln dn shrd blkly, silic text in prt, chrt, much chrt, tan brn shrp frsh foss opaqa

shl, gry green, teal green, wxy, grsy, sst clr lt gry clstrs, f grnd, sub rded/rded grns, w/srtd, prly cem, fria to sub fria, gd inter grn por, tr gas bubs, blk flky stain, 2-3 clstrs w/drck blk oil droplets, no live sho, nodor, nsfo

sst clr lt gry clstrs, f grnd, sub rded to rded grns, fair srtd, sub fria to fria, prly cem, silic cem, tr dolo xln fill in prt, blk min stain, tr glau, tr clay fill, tr pyritic

sst clr lt gry, tan clstrs, f grnd sub rded/rded grns, w/srtd, prly cem, sub fria, dolo in prt, silic cem, min fill, tr blk dead stain, clay fill in prt, blk min specks

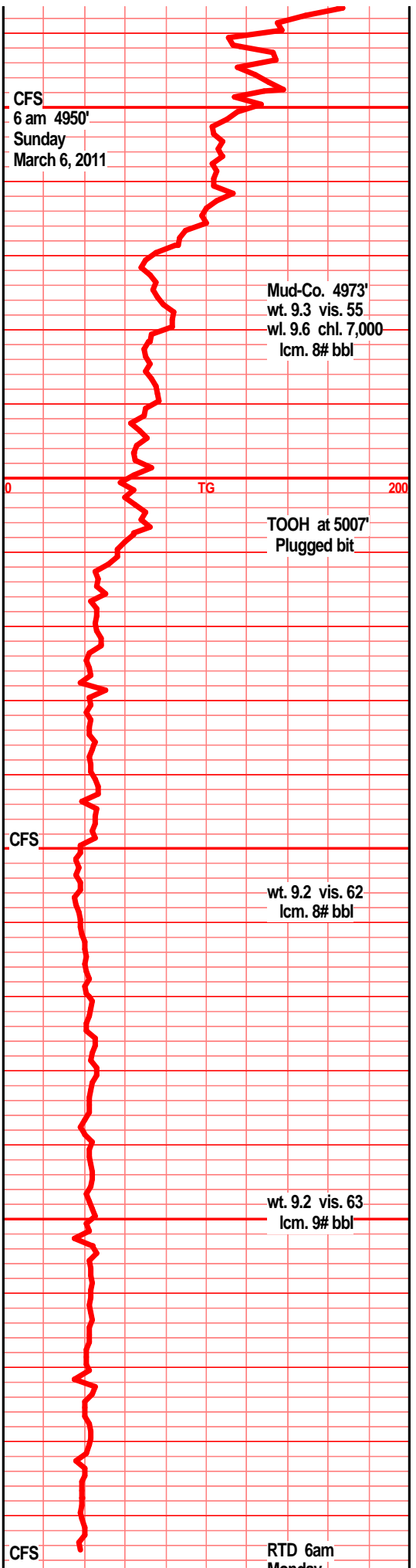
sst tan drk tan (dolo xln fill) clstrs, f grnd, sub rded to rded grns, w/srtd, sub fria to tite, pr to w/cem, silic cem, tr gas bubs, drk brn oil smears, nodor, sst wht clstrs, f grnd, sub rded, tr sub ang grns, w/srtd, vry w/cem, silic cem, much glau in prt, min fill, tr clay fill/arg

shl green teal green, wxy grsy

shl drk gry green, teal green, slick, wxy, grsy, pyritic bands

shl gry drk gry, teal green, silty, grsy, wxy, tr snd grn inclu, pyritic

shl green, teal green, silty, wxy grsy, pyritic



KID 5145 (-3/10)

5150

00

Mud-Co. 5145'
wt. 9.3 vis. 60
wl. 8.8 chl. 7,000
lcm. 10# bbl

Monday
March 7, 2011
e-logs out 3 pm