

Jeff Christian

PETROLEUM GEOLOGIST
Wichita, Kansas

GEOLOGISTS' REPORT

DRILLING TIME AND SAMPLE LOG

OPERATOR	MURFIN DRILLING CO., INC.	ELEVATIONS	K8	2143'
LEASE	HAGEN #1-12	GL	2138'	
LOCATION	1550' FSL & 1240' FWL	MEASUREMENTS FROM K8		
SEC.	12 TNSP	RNG	20 W	
COUNTY	ELLIS	STATE	KANSAS	
FIELD	WILDCAT	CONDUCTOR	NONE	
API	15-051-26089	Surface	8 5/8" @ 222'	
CONTRACTOR	MURFIN DRILLING CO.	W/ 150 SX	Production 5 1/2" @	
DRILLING STARTED	02/14/11	COMPLETED	02/22/11	
WILD DISPLACED	2945'	WILD TYPE	CHEMICAL	
DRILLING TIME KEPT FROM	3100'	TO RTD		
SAMPLES SAVED FROM	3100'	TO RTD		
SAMPLES EXAMINED FROM	3100'	TO RTD		
GEOLOGICAL SUPERVISION FROM	3075'	TO RTD		
FORMATION NAME	LOG	TOP DATUM	TOP DATE	SAMPLE
ANHYDRITE	1504'	(+639)	1506'	(+637)
TOPEKA	3192'	(-1049)	3192'	(-1049)
HEEBNER	3415'	(-1272)	3417'	(-1274)
TORONTO	3440'	(-1297)	3440'	(-1297)
LANSING	3458'	(-1315)	3458'	(-1315)
BKC	3700'	(-1557)	3695'	(-1552)
PAWNEE	3746'	(-1603)	3739'	(-1596)
ARBUCKLE	3829'	(-1686)	3800'	(-1657)
TOTAL DEPTH	3880'	(-1737)	3880'	(-1737)

DATE	7:00 AM DEPTH	REMARKS
02/14/11	MIRT	Spud 5:00 pm
02/15/11	330'	Drlg. dev. 1/4 deg @ 222'
02/16/11	2095'	Drlg.
02/17/11	2810'	Drlg.
02/18/11	3452'	CFS dev. 1/2 deg. @ 3480'
02/19/11	3530'	OB w/ DST #2
02/20/11	3614'	OB w/ DST #4
02/21/11	3720'	Drlg RTD 3880' @ 7:30 pm dev. 1/2 deg.
02/22/11	3880'	Finish Logging 3:00 am

Remarks

5 1/2" production casing run to further test the Lansing/Kansas City 'A' zone and possibly the Oread formation.

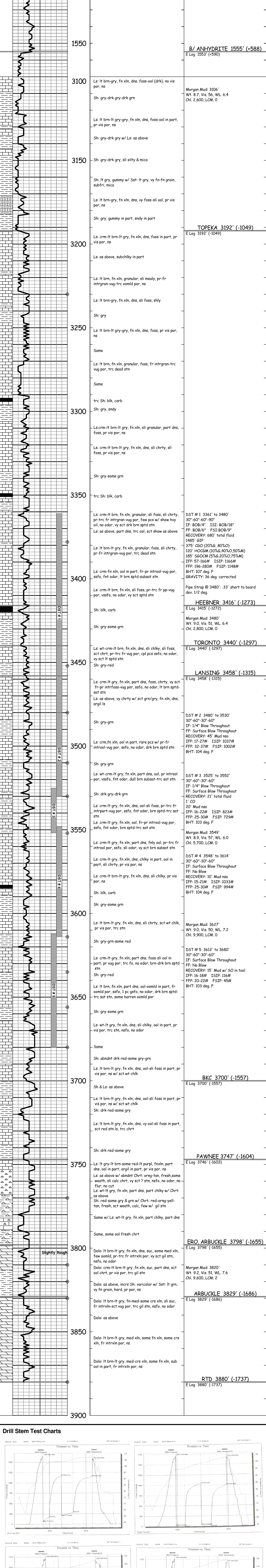
Electric log measurements correlate about even to 1' high compared to rotary measurements. Sample tops adjusted to the electric log.

Samples deposited at the Kansas Geological Survey.

Respectfully Submitted,

Jeff Christian
Jeff Christian

LITH	0	DRILL TIME (MIN/FT)	10	DEPTH (FEET)	SAMPLE DESCRIPTIONS	REMARKS
------	---	---------------------	----	--------------	---------------------	---------



Drill Stem Test Charts

