



**TRILOBITE
TESTING, INC**

DRILL STEM TEST REPORT

Sam Gary Jr. & Associates Inc

Thomas Funk #1-7

1515 Wynkoop
Ste 700
Denver Co 80202
ATTN: Clayton Camozzi

7-16s-15w Barton

Job Ticket: 41897 **DST#: 1**
Test Start: 2011.03.09 @ 13:25:00

GENERAL INFORMATION:

Formation: **Penn Sd / Arbuckle**

Deviated: No Whipstock: ft (KB)

Time Tool Opened: 15:15:30

Time Test Ended: 20:30:30

Test Type: Conventional Bottom Hole

Tester: Ray Schwager

Unit No: 42

Interval: 3438.00 ft (KB) To 3510.00 ft (KB) (TVD)

Reference Elevations: 1941.00 ft (KB)

Total Depth: 3510.00 ft (KB) (TVD)

1933.00 ft (CF)

Hole Diameter: 7.85 inches Hole Condition: Fair

KB to GR/CF: 8.00 ft

Serial #: 6625 Inside

Press @ Run Depth: 218.42 psig @ 3443.00 ft (KB)

Capacity: 8000.00 psig

Start Date: 2011.03.09 End Date: 2011.03.09

Last Calib.: 2011.03.09

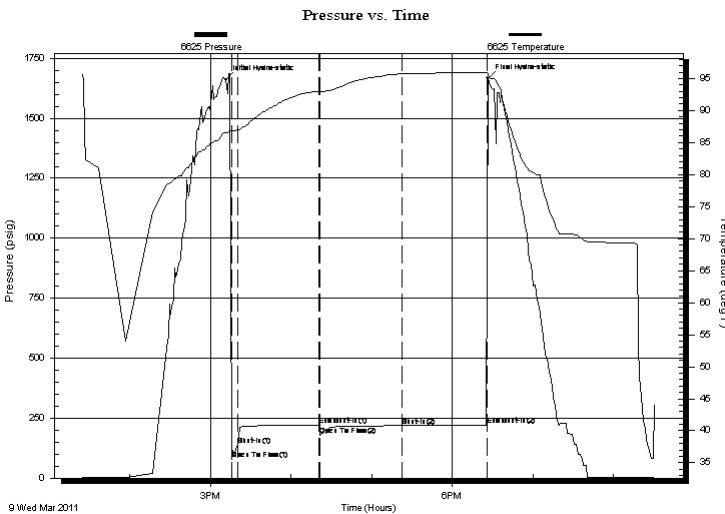
Start Time: 13:25:05 End Time: 20:30:29

Time On Btm: 2011.03.09 @ 15:11:30

Time Off Btm: 2011.03.09 @ 18:26:29

TEST COMMENT: IFP-5 min - strg bl in 1 min
ISIP-60 min - surface bl bk
FFP-30 min -strg bl in 2 min
FSIP-90 min - no bl bk

PRESSURE SUMMARY



Time (Min.)	Pressure (psig)	Temp (deg F)	Annotation
0	1660.99	86.57	Initial Hydro-static
4	79.26	86.75	Open To Flow (1)
9	138.59	86.99	Shut-In(1)
70	219.34	93.05	End Shut-In(1)
70	180.56	93.04	Open To Flow (2)
131	218.42	95.74	Shut-In(2)
194	220.44	95.96	End Shut-In(2)
195	1666.67	95.80	Final Hydro-static

Recovery

Length (ft)	Description	Volume (bbl)
170.00	MW 25%M75%W	2.11
248.00	Water	3.48

Gas Rates

	Choke (inches)	Pressure (psig)	Gas Rate (Mcf/d)



**TRILOBITE
TESTING, INC**

DRILL STEM TEST REPORT

FLUID SUMMARY

Sam Gary Jr. & Associates Inc

Thomas Funk #1-7

1515 Wynkoop
Ste 700
Denver Co 80202

7-16s-15w Barton

Job Ticket: 41897

DST#: 1

ATTN: Clayton Camozzi

Test Start: 2011.03.09 @ 13:25:00

Mud and Cushion Information

Mud Type: Gel Chem

Cushion Type:

Oil API:

deg API

Mud Weight: 9.00 lb/gal

Cushion Length:

ft

Water Salinity:

23000 ppm

Viscosity: 48.00 sec/qt

Cushion Volume:

bbbl

Water Loss: 7.94 in³

Gas Cushion Type:

Resistivity: ohm.m

Gas Cushion Pressure:

psig

Salinity: 6300.00 ppm

Filter Cake: 1.00 inches

Recovery Information

Recovery Table

Length ft	Description	Volume bbl
170.00	MW 25%M75%W	2.111
248.00	Water	3.479

Total Length: 418.00 ft Total Volume: 5.590 bbl

Num Fluid Samples: 0

Num Gas Bombs: 0

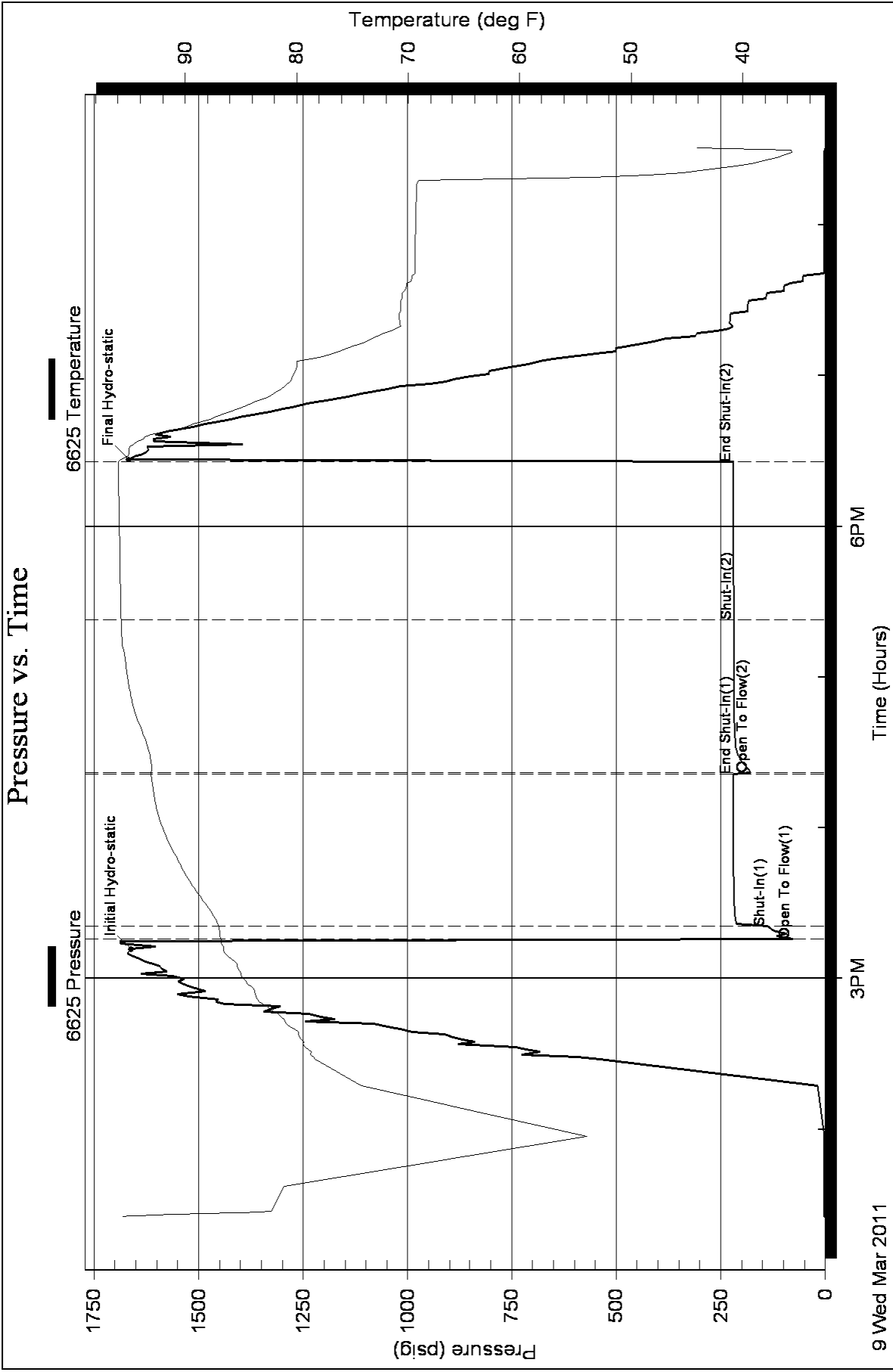
Serial #:

Laboratory Name:

Laboratory Location:

Recovery Comments: Sampler Data:PSI 240 3000MLwater
RW .4 @ 50F

Pressure vs. Time



Serial #: 8374

Fluid

Sam Gary Jr. & Associates Inc

7-16s-15w Barton

DST Test Number: 1

