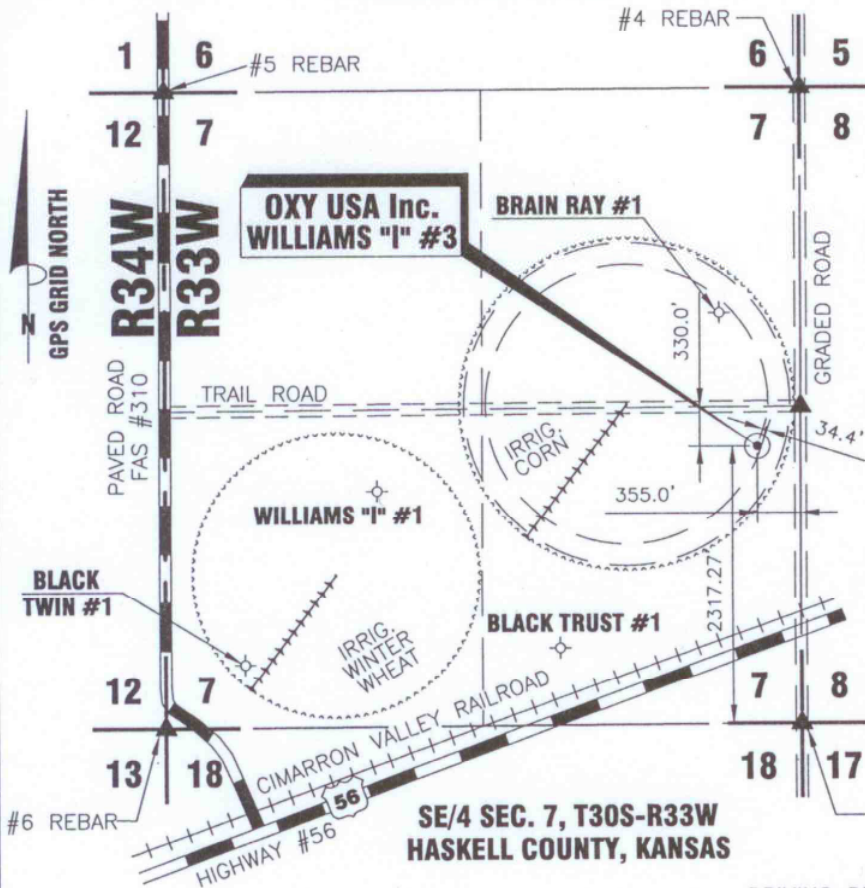


T30S-R33W



DATE 6/27/2011

OPERATOR OXY USA, Inc.

WELL NAME WILLIAMS "I" #3

LOCATION SE/4 SEC. 7, T30S-R33W

FOOTAGES & RELATIONS 355.0' F E L
2317.27' F S L

ELEVATION 2965.04'

DISTANCE TO EXISTING WELL 1153.32' BRAIN RAY #1

AUTHORIZED BY BETH HICKERT

CROP IRRIG. CORN

WATER WELL _____

NEAREST TOWER _____

AIRPORT _____

LATITUDE 37°27'08.22829" N = 37.452286° N

LONGITUDE 100°57'46.46474" W = 100.962907° W

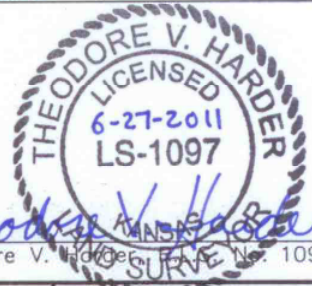
STATE PLANE COORD. X = 1285121.70

KANSAS SOUTH ZONE Y = 295497.76

NAD 27

DRIVING DIRECTIONS USED TO STAKE WELL FROM KNOWN LANDMARK OR CITY FROM:

FROM THE INTERSECTION OF HWY #56 & HWY #190 ON THE EAST SIDE OF SATANTA, KS; THENCE EAST-NORTHEAST ON HWY #56 1.1 MILE; THENCE NORTH 0.2 MILE; THENCE WEST 355 FT INTO.



NOTE: CONTRACTOR TO CONTACT ONE CALL @ 1-800-DIG SAFE PRIOR TO ANY EXCAVATION OR CONSTRUCTION.

	1117 N. HIGHWAY 27 P.O. DRAWER 330 ELKHART, KANSAS 67950 (620)697-2500	NO. DWG.	REVISIONS	DATE
	PROPOSED WELL LOCATION OF THE WILLIAMS "I" #3 LOCATED IN THE SE/4 SEC. 7, T30S - R33W HASKELL COUNTY, KANSAS	SCALE: 1" = 1500'	DATE: 6/27/2011	
DRAWN BY: DRF CHECKED BY: TVH APPROVED BY: _____ AUTHORIZED BY: B. HICKERT	HARDER AND ASSOCIATES "locating our world" LAND SURVEYING - GPS SPECIALISTS P.O. BOX 518 514 MORTON Elkhart, Kansas 67950 Phone: (620) 697-2696 Fax: (620) 697-4175 E-MAIL: tharder@elkhart.com			