



## DRILL STEM TEST REPORT

Prepared For: **NOBLE PETROLEUM INC**

3101 N ROCK RD STE 125 WICHITA KS  
67226+3100

ATTN:

**17-28-4 BUTLER**

**JONES #2**

Start Date: 2011.05.21 @ 02:05:00

End Date: 2011.05.21 @ 08:27:30

Job Ticket #: 15808                      DST #: 1

Superior Testers Enterprises LLC  
PO Box 138 Great Bend KS 67530  
1-800-792-6902

Printed: 2011.05.21 @ 08:42:28

NOBLE PETROLEUM INC  
JONES #2  
17-28-4 BUTLER  
DST # 1  
LANSING  
2011.05.21







# DRILL STEM TEST REPORT

**TOOL DIAGRAM**

NOBLE PETROLEUM INC  
 3101 N ROCK RD STE 125 WICHITA KS  
 67226+3100  
 ATTN:

**JONES #2**  
**17-28-4 BUTLER**  
 Job Ticket: 15808      **DST#: 1**  
 Test Start: 2011.05.21 @ 02:05:00

**Tool Information**

Drill Pipe:	Length: 1520.00 ft	Diameter: 3.80 inches	Volume: 21.32 bbl	Tool Weight: 1000.00 lb
Heavy Wt. Pipe:	Length: 0.00 ft	Diameter: 0.00 inches	Volume: 0.00 bbl	Weight set on Packer: 20000.00 lb
Drill Collar:	Length: 180.00 ft	Diameter: 2.25 inches	Volume: 0.89 bbl	Weight to Pull Loose: 45000.00 lb
		Total Volume: 22.21 bbl		Tool Chased 0.00 ft
Drill Pipe Above KB:	26.00 ft			String Weight: Initial 32000.00 lb
Depth to Top Packer:	1703.00 ft			Final 32000.00 lb
Depth to Bottom Packer:	ft			
Interval between Packers:	23.00 ft			
Tool Length:	52.00 ft			
Number of Packers:	2	Diameter: 6.75 inches		

Tool Comments:

Tool Description	Length (ft)	Serial No.	Position	Depth (ft)	Accum. Lengths
Change Over Sub	1.00			1675.00	
Shut-In Tool	5.00			1680.00	
Hydroic Tool	5.00			1685.00	
Jars	6.00			1691.00	
Safety Joint	2.00			1693.00	
Packer	5.00			1698.00	29.00      Bottom Of Top Packer
Packer	5.00			1703.00	
Perforations	18.00			1721.00	
Recorder	1.00	6663	Inside	1722.00	
Recorder	1.00	6666	Outside	1723.00	
Bullnose	3.00			1726.00	23.00      Bottom Packers & Anchor

**Total Tool Length: 52.00**



# DRILL STEM TEST REPORT

**FLUID SUMMARY**

NOBLE PETROLEUM INC  
 3101 N ROCK RD STE 125 WICHITA KS  
 67226+3100  
 ATTN:

**JONES #2**  
**17-28-4 BUTLER**  
 Job Ticket: 15808      **DST#: 1**  
 Test Start: 2011.05.21 @ 02:05:00

## Mud and Cushion Information

Mud Type: Gel Chem	Cushion Type:	Oil API:	deg API
Mud Weight: 9.00 lb/gal	Cushion Length: ft	Water Salinity:	ppm
Viscosity: 29.00 sec/qt	Cushion Volume: bbl		
Water Loss: 8.40 in <sup>3</sup>	Gas Cushion Type:		
Resistivity: ohm.m	Gas Cushion Pressure: psia		
Salinity: 2000.00 ppm			
Filter Cake: 1.00 inches			

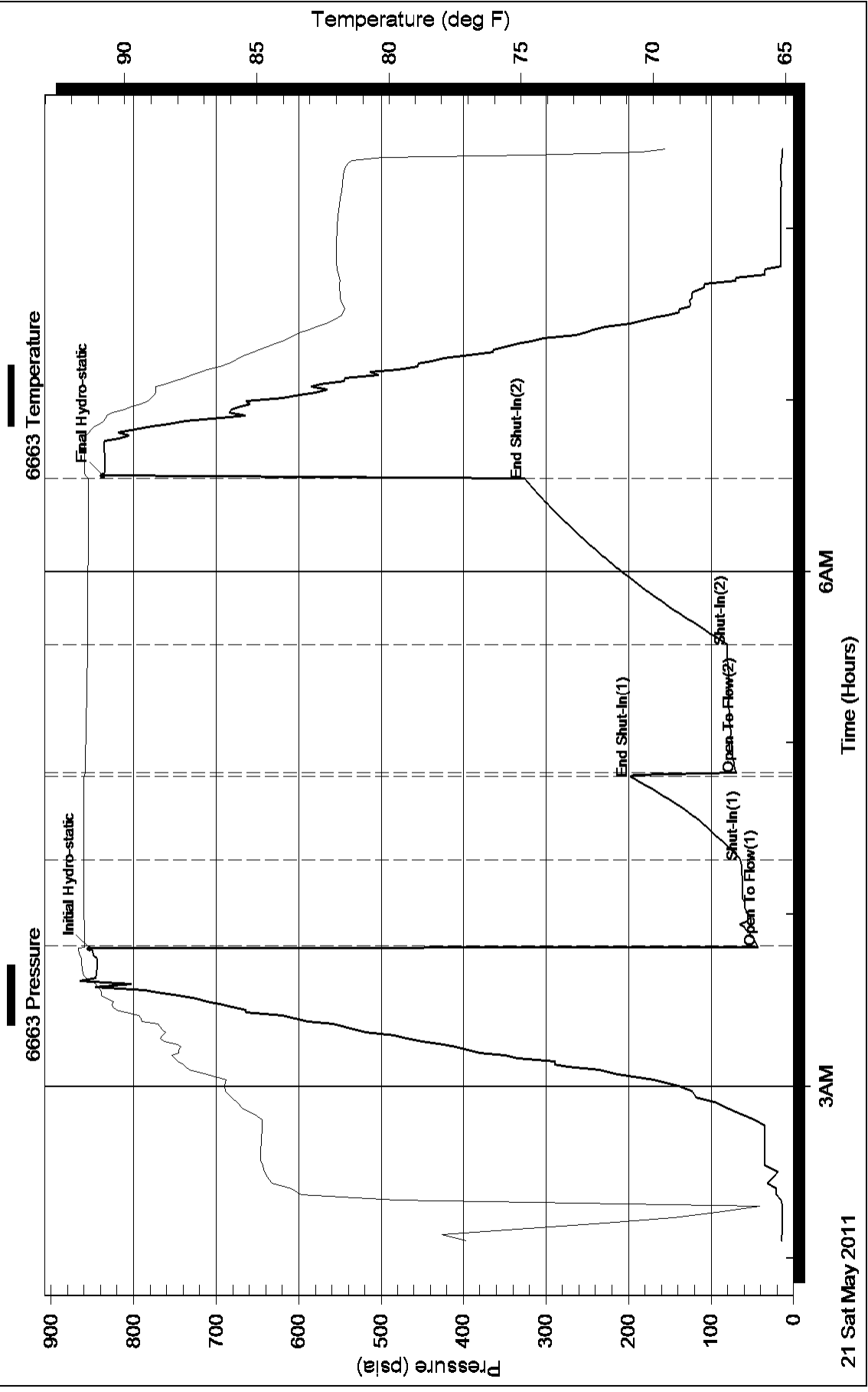
## Recovery Information

Recovery Table

Length ft	Description	Volume bbl
90.00	MUD	0.443

Total Length: 90.00 ft      Total Volume: 0.443 bbl  
 Num Fluid Samples: 0      Num Gas Bombs: 0      Serial #:  
 Laboratory Name:      Laboratory Location:  
 Recovery Comments:

### Pressure vs. Time



### Pressure vs. Time

