

COMPANY: Noble Petroleum, Inc.
LEASE: Jones #2
FIELD: Augusta
LOCATION: 990 FSL & 480 FWL
SEC. 17 T15P 28S RGE 4E
COUNTY: Butler STATE: Kansas

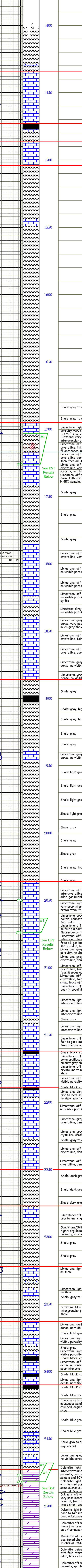
CONTRACTOR: C&G Drilling Rig #1
SPUD: 5-17-11 COMPLETION: 5-25-11
SAMPLES SAVED FROM: 1400' TO RTD

FORMATION	SAMPLE	E. LOG	DATUM	A. ELOG	B. ELOG	C.
Oread	1434	1433	-167	-152	-157	
Heebner	1473	1471	-205	-195	-197	
Douglas	1504	1503	-257	-227	-229	
Brown	1635	1634	-426	-422	-430	
Lansing	1726	1722	-470	-472	-470	
Base Lansing	1882	1883	-617	-613	-614	
Stark	2036	2033	-757	-755	-762	
Hushpucknev	2189	2186	-893	-895	-890	
BKC	2250	2186	-970	-913	-920	
Marmaton	2278	2275	-981	-977	-984	
Cherokee	2410	2407	-1009	-1005	-1012	
Arbuckle	2473	2469	-1118	-1139	-1144	
			-1203	-1206	-1207	
RTD/LTD	2549	2546				

DEPTH MEASURED FROM KB
Log: Drilling
Surface: 8.8% (20.8% w/105x
Production: 3.12% (25.4% w/196x
Electric Logs
Dual Induction/Resist/Neutron
Microlog

REFERENCE WELLS

WELL	DEPTH	FORMATION
A. FSL FNL & 990 FWL 20-28S-4E	2025'	Oread
B. C. SLS SW SW 17-28S-4E	2025'	Oread
C. C. E2 S3 SW 17-28S-4E	2025'	Oread



vis 45 wt 8.3 wl 9.2 lcm 4#

FORMATION	DEPTH (ft)	DESCRIPTION	REMARKS
Oread	1434 - 168		
Heebner	1473 - 207		
Toronto	1486 - 220		
Douglas	1504 - 238		
Brown Lime	1695 - 429		
Lansing	1717 - 451		
Base Lansing	1886 - 620		
Kansas City	2036 - 770		
Stark	2162 - 896		
Hushpucknev	2189 - 923		
BKC	2250 - 984		
Marmaton	2278 - 1012		
Altamont	2322 - 1056		
Pawnee	2363 - 1097		
Cherokee	2410 - 1144		
Arbuckle	2473 - 1207		

