



Radiation Guard Log

DIGITAL LOG (785) 625-3858

API No.	15-065-23,741-00-00		
Company	Venture Resources, Inc.		
Well	Keiswetter No. 1-17		
Field	Graham		
County	Graham	State	Kansas
Location	SW NE NW SE 2,050' FSL & 1,850' FEL		
Sec: 17	Twp: 7S	Rge: 21W	Other Services None

Permanent Datum	Ground Level	Elevation	2169
Log Measured From	Kelly Bushing	7	Ft. Above Perm. Datum
Drilling Measured From	Kelly Bushing		
Date	6/15/2011		
Run Number	One		
Depth Driller	3800		
Depth Logger	3799		
Bottom Logged Interval	3798		
Top Log Interval	200		
Casing Driller	8.625 @ 216		
Casing Logger	214		
Bit Size	7.875		
Type Fluid in Hole	Chemical		
Salinity, ppm CL	2600		
Density / Viscosity	9.2	51	
pH / Fluid Loss	10.0	7.2	
Source of Sample	Flowline		
Rm @ Meas. Temp	.36	@	80
Rmf @ Meas. Temp	.27	@	80
Rmc @ Meas. Temp	.49	@	80
Source of Rmf / Rmc	Charts		
Rm @ BHT	.25	@	114
Operating Rig Time	2 Hours		
Max Rec. Temp. F	114		
Equipment Number	10		
Location	Hays		
Recorded By	J. Long		
Witnessed By	Greg Mackey		

<<< Fold Here >>>

All interpretations are opinions based on inferences from electrical or other measurements and we cannot and do not guarantee the accuracy or correctness of any interpretation, and we shall not, except in the case of gross or willful negligence on our part, be liable or responsible for any loss, costs, damages, or expenses incurred or sustained by anyone resulting from any interpretation made by any of our officers, agents or employees. These interpretations are also subject to our general terms and conditions set out in our current Price Schedule.

Comments

Thank you for using Log-Tech, Inc.
(785) 625-3858

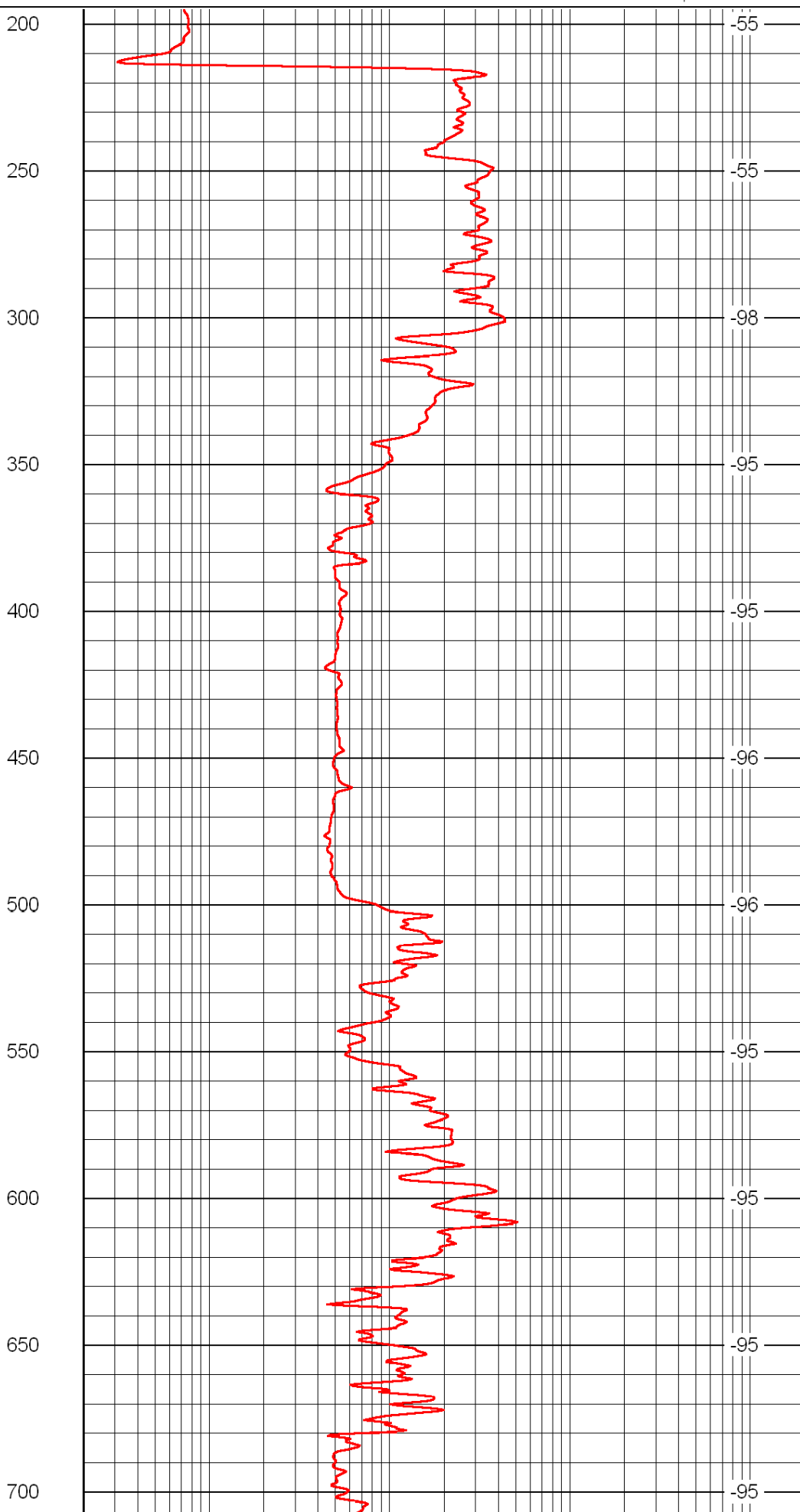
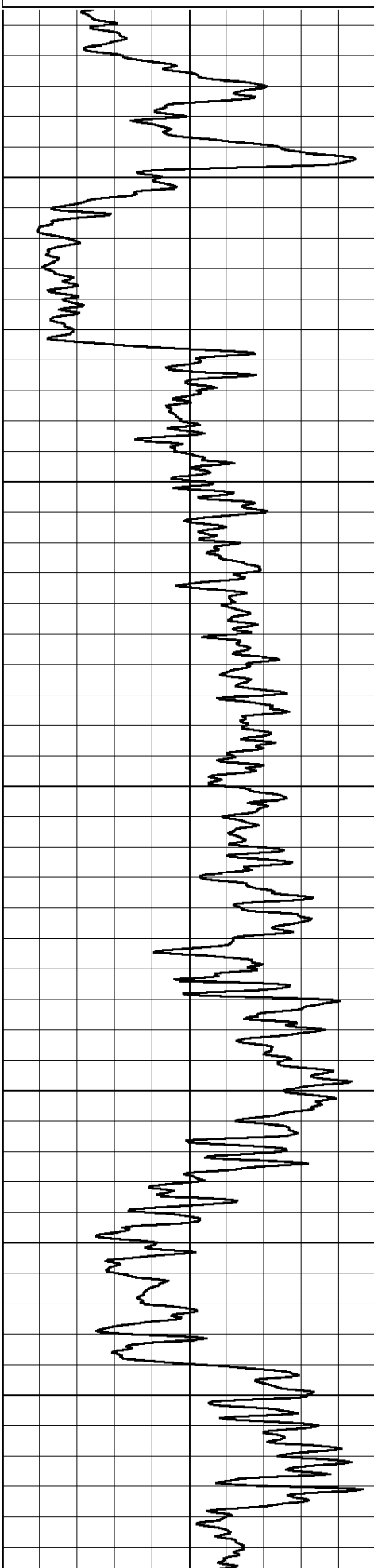
Bogue, North to Highway 18 and Highway 24 Intersection, 100 yards East, 4 North, West Into

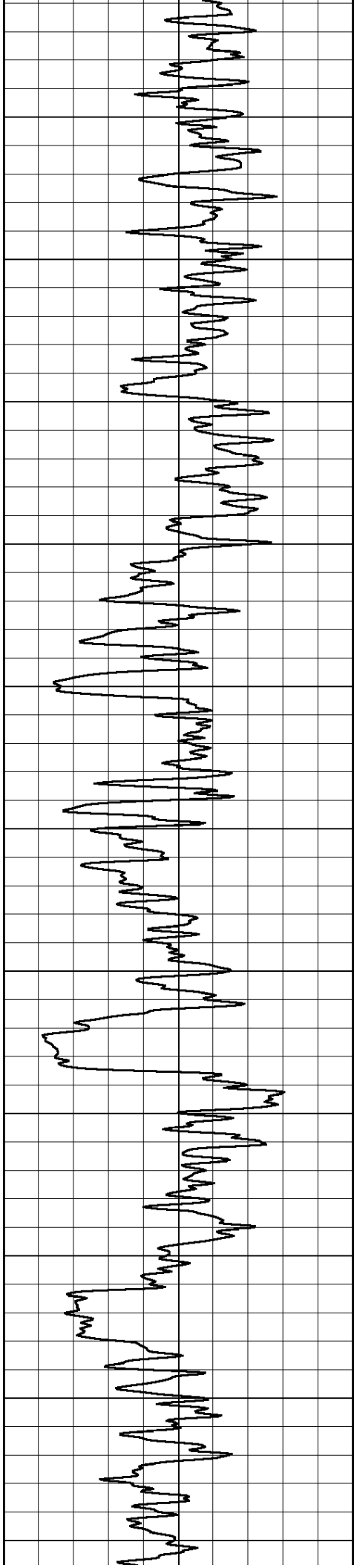
Database File: c:\warrior\data\venture_keiswetter no. 1-17\venture_keiswetter_1-17hd.db
 Dataset Pathname: rag/ventrag
 Presentation Format: rag2in
 Dataset Creation: Wed Jun 15 16:06:13 2011
 Charted by: Depth in Feet scaled 1:600

0 Gamma Ray 150

0.2 lgrd 2000

LSPD





750

800

850

900

950

1000

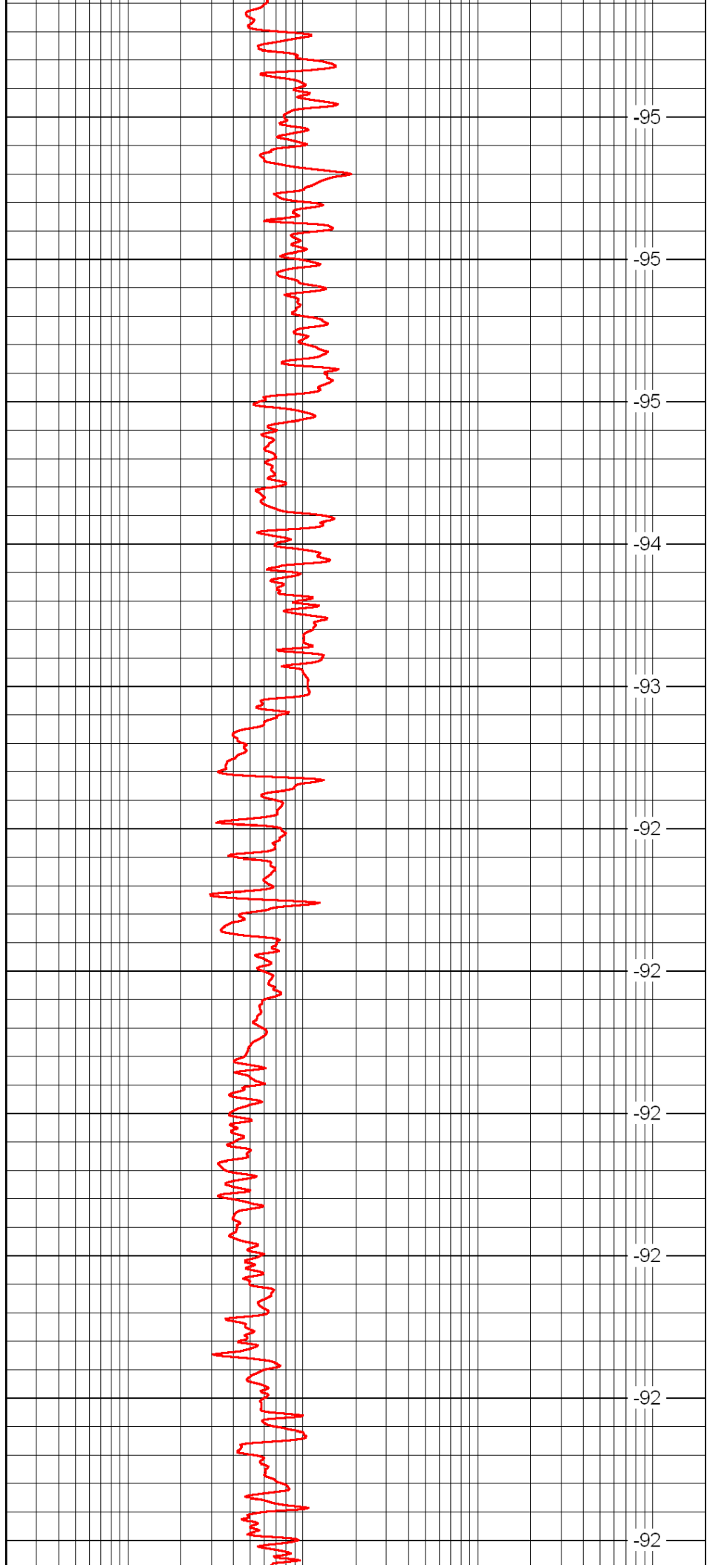
1050

1100

1150

1200

1250



-95

-95

-95

-94

-93

-92

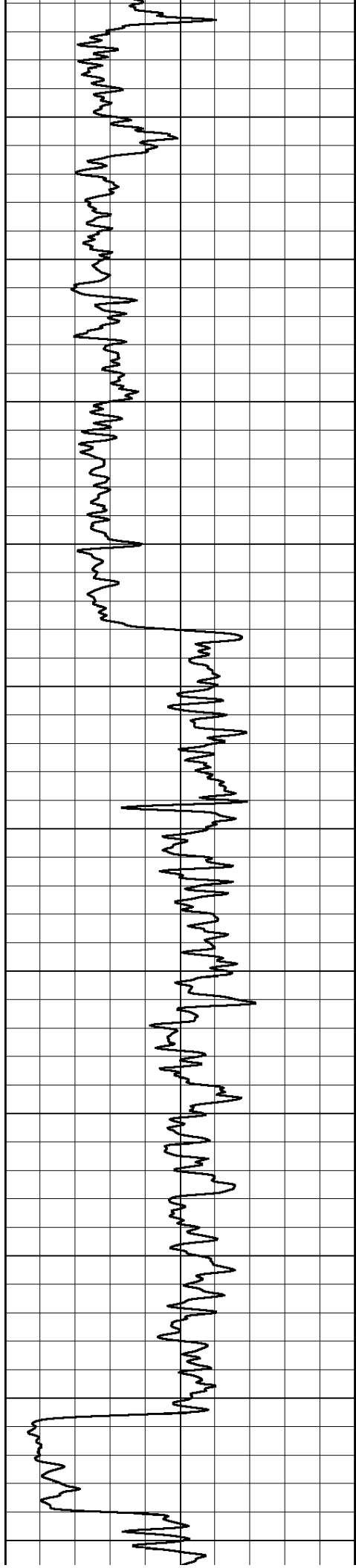
-92

-92

-92

-92

-92



1300

1350

1400

1450

1500

1550

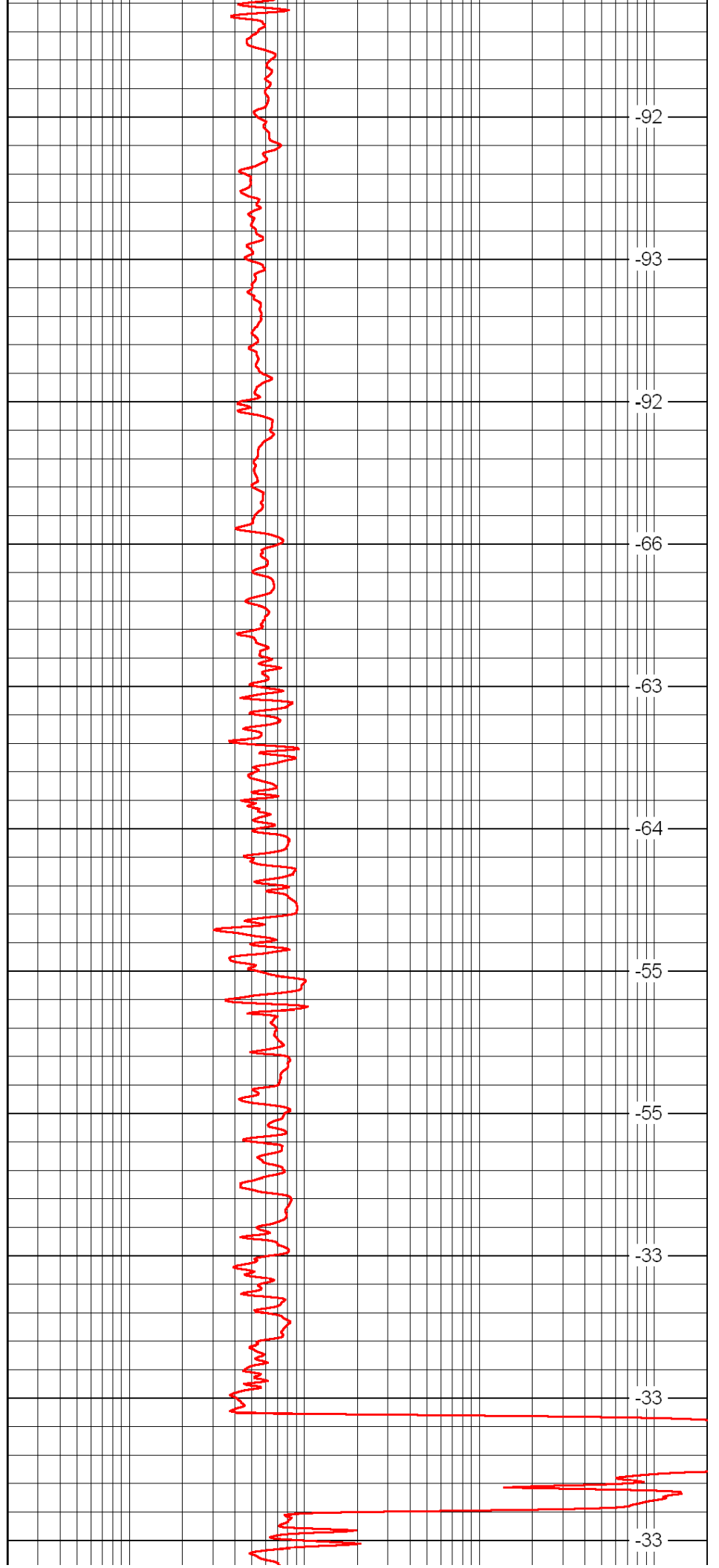
1600

1650

1700

1750

1800



-92

-93

-92

-66

-63

-64

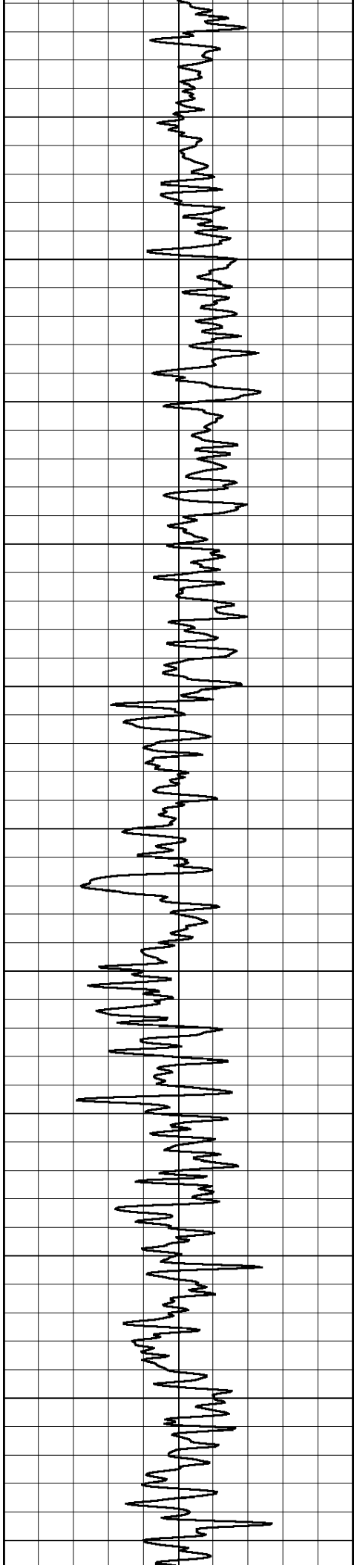
-55

-55

-33

-33

-33



1850

1900

1950

2000

2050

2100

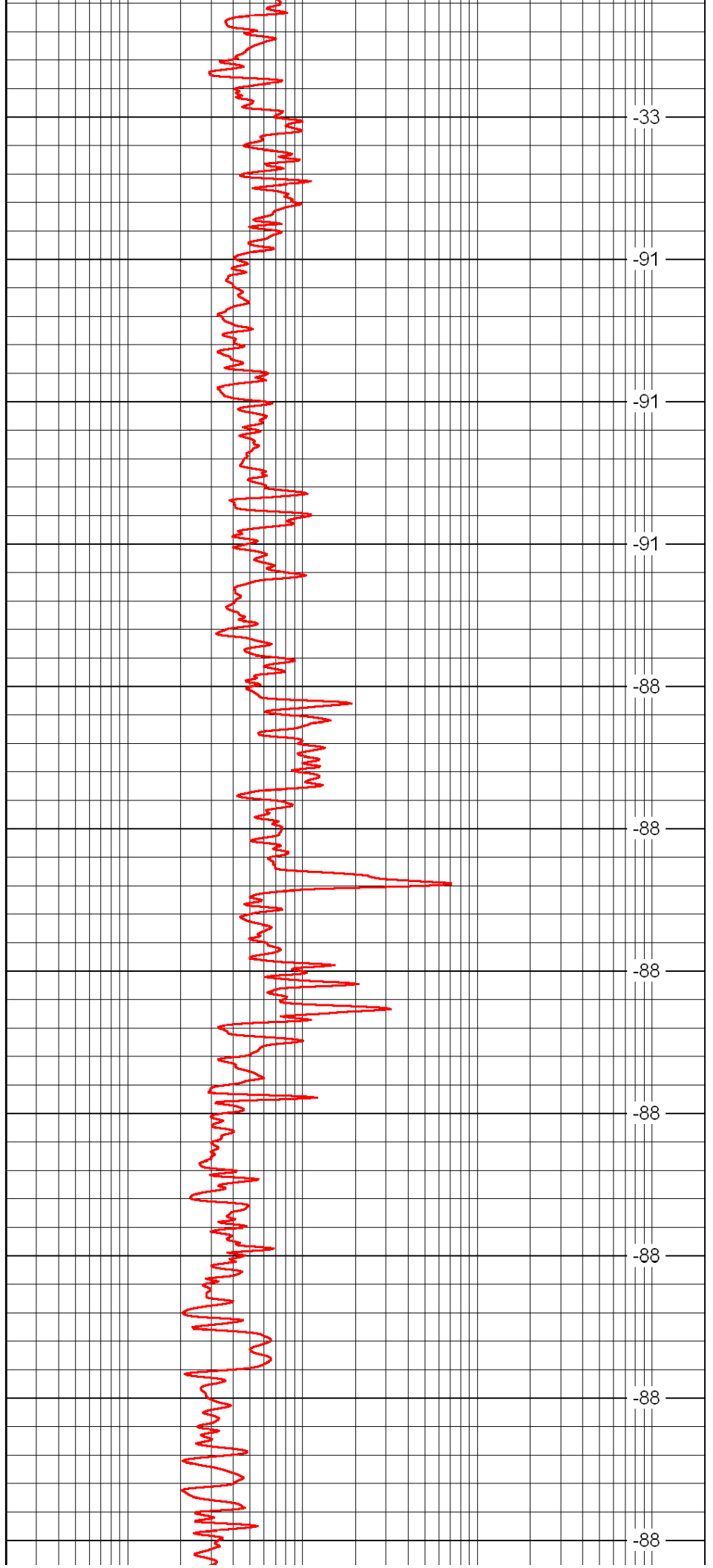
2150

2200

2250

2300

2350



-33

-91

-91

-91

-88

-88

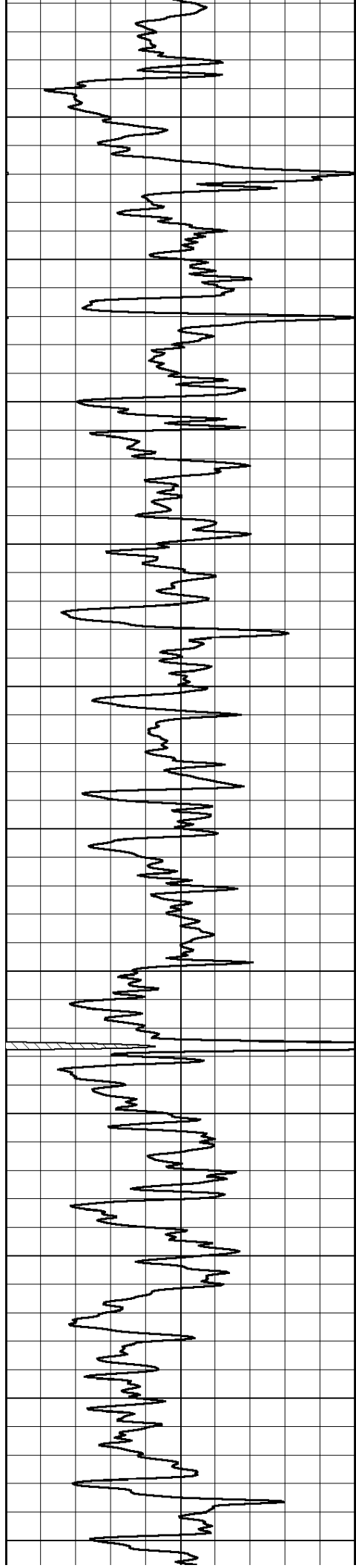
-88

-88

-88

-88

-88



2400

2450

2500

2550

2600

2650

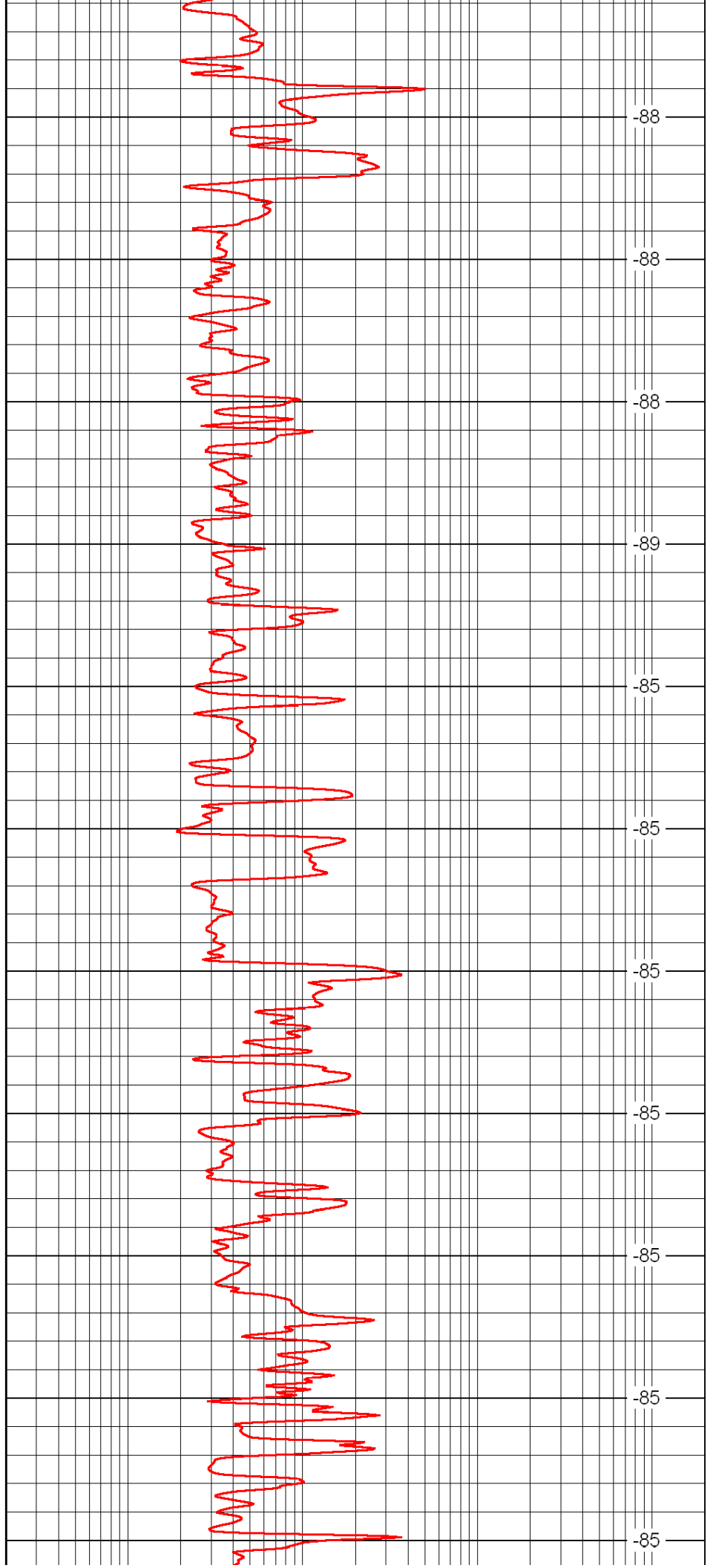
2700

2750

2800

2850

2900



-88

-88

-88

-89

-85

-85

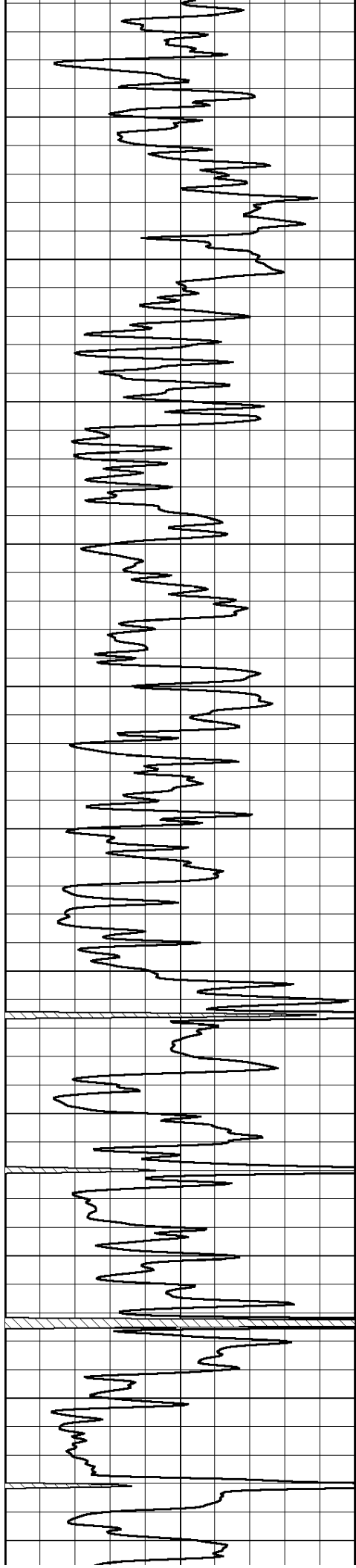
-85

-85

-85

-85

-85



2950

3000

3050

3100

3150

3200

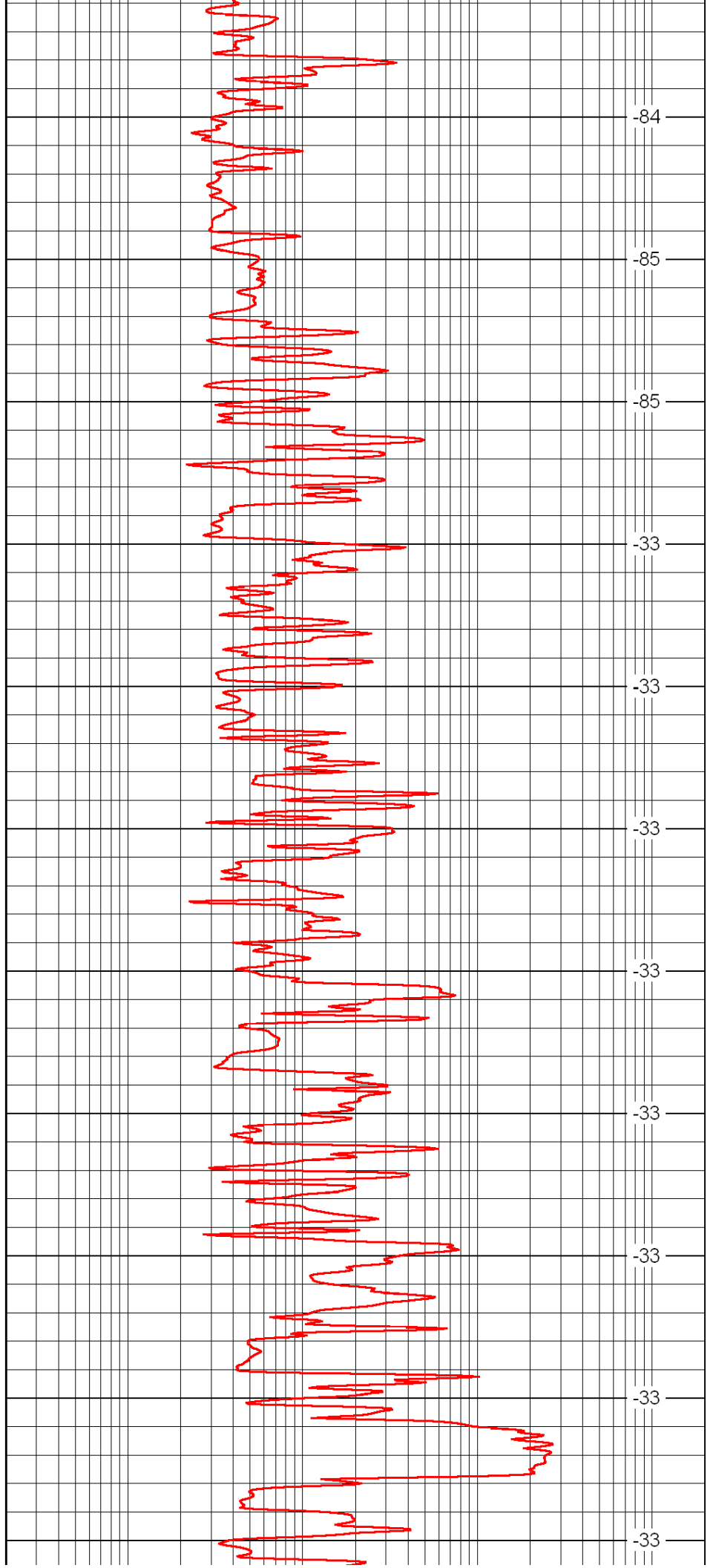
3250

3300

3350

3400

3450



-84

-85

-85

-33

-33

-33

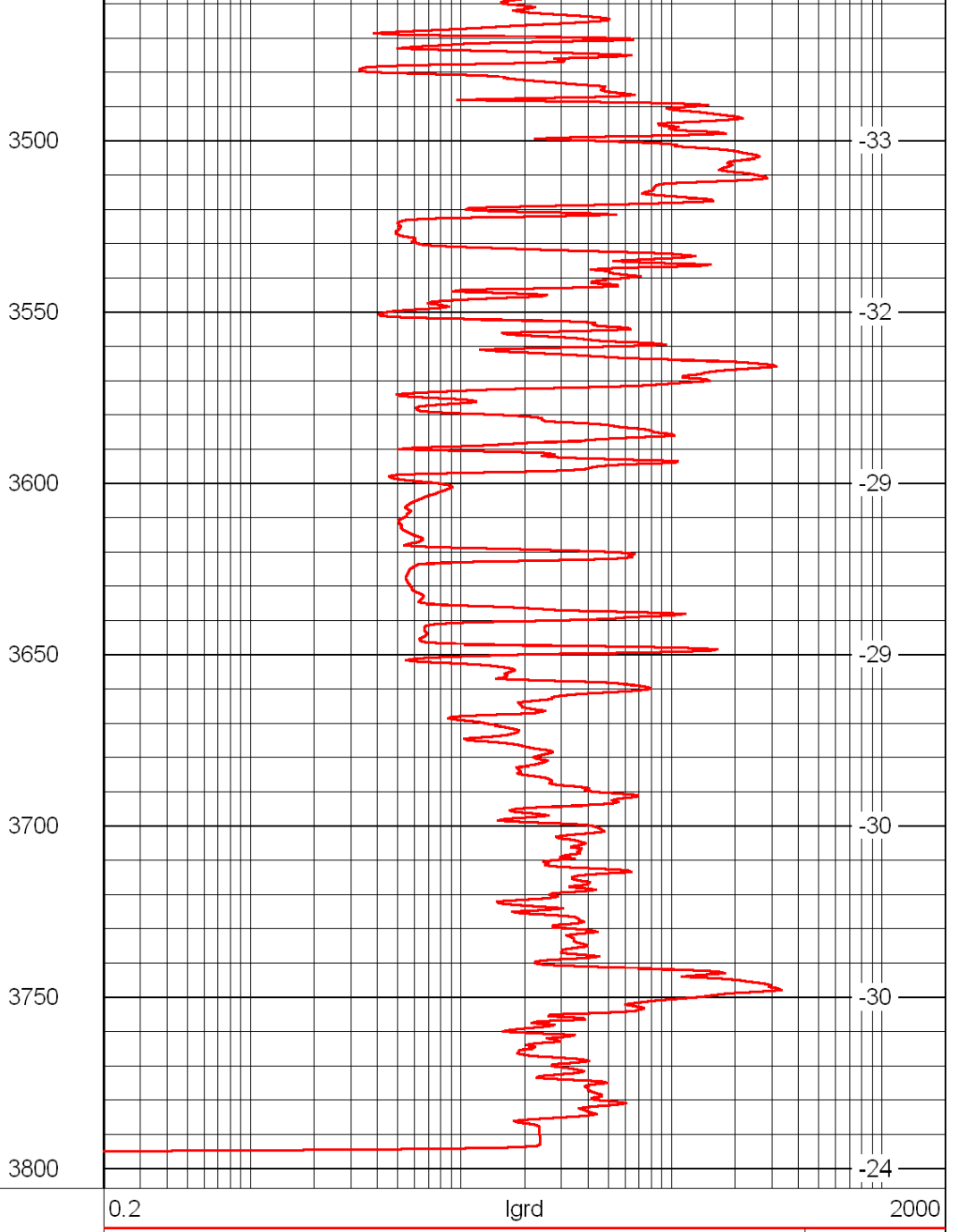
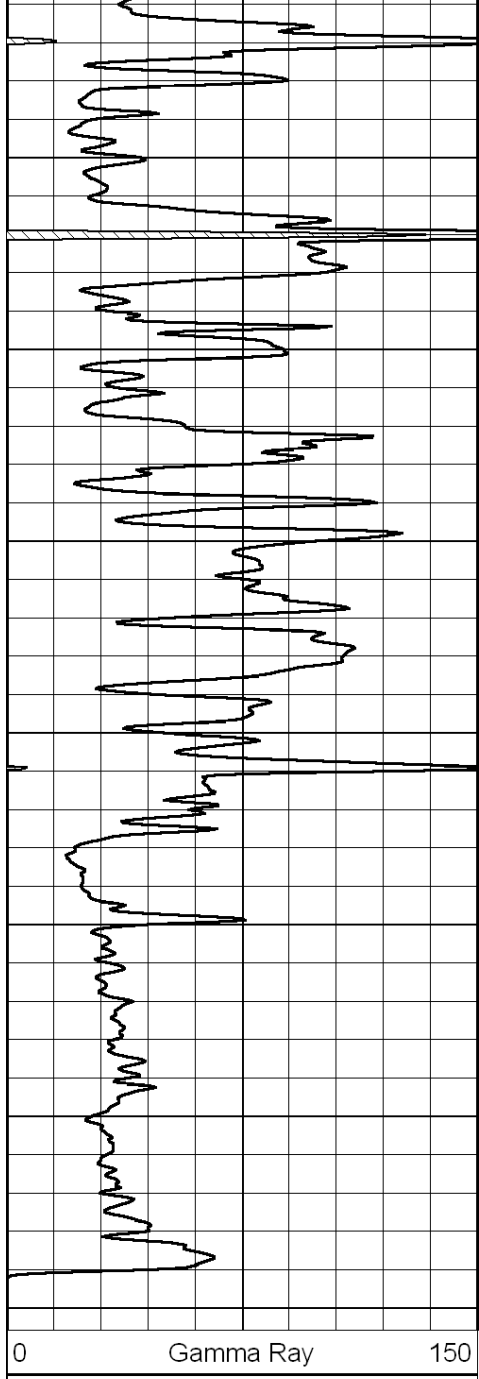
-33

-33

-33

-33

-33



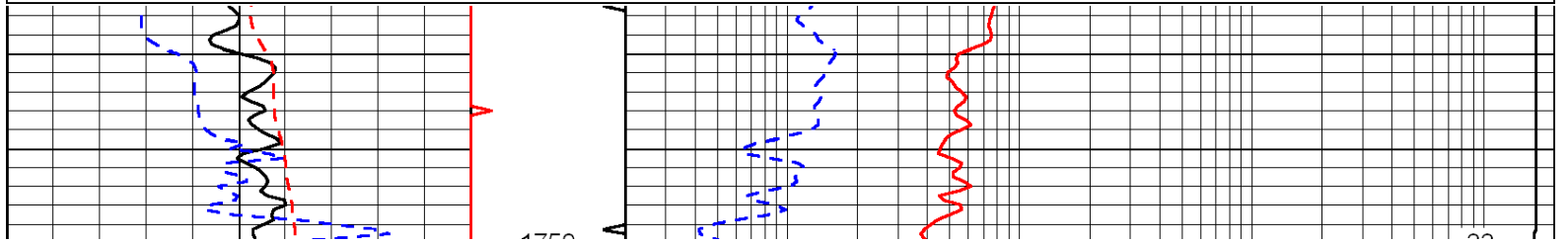
LSPD

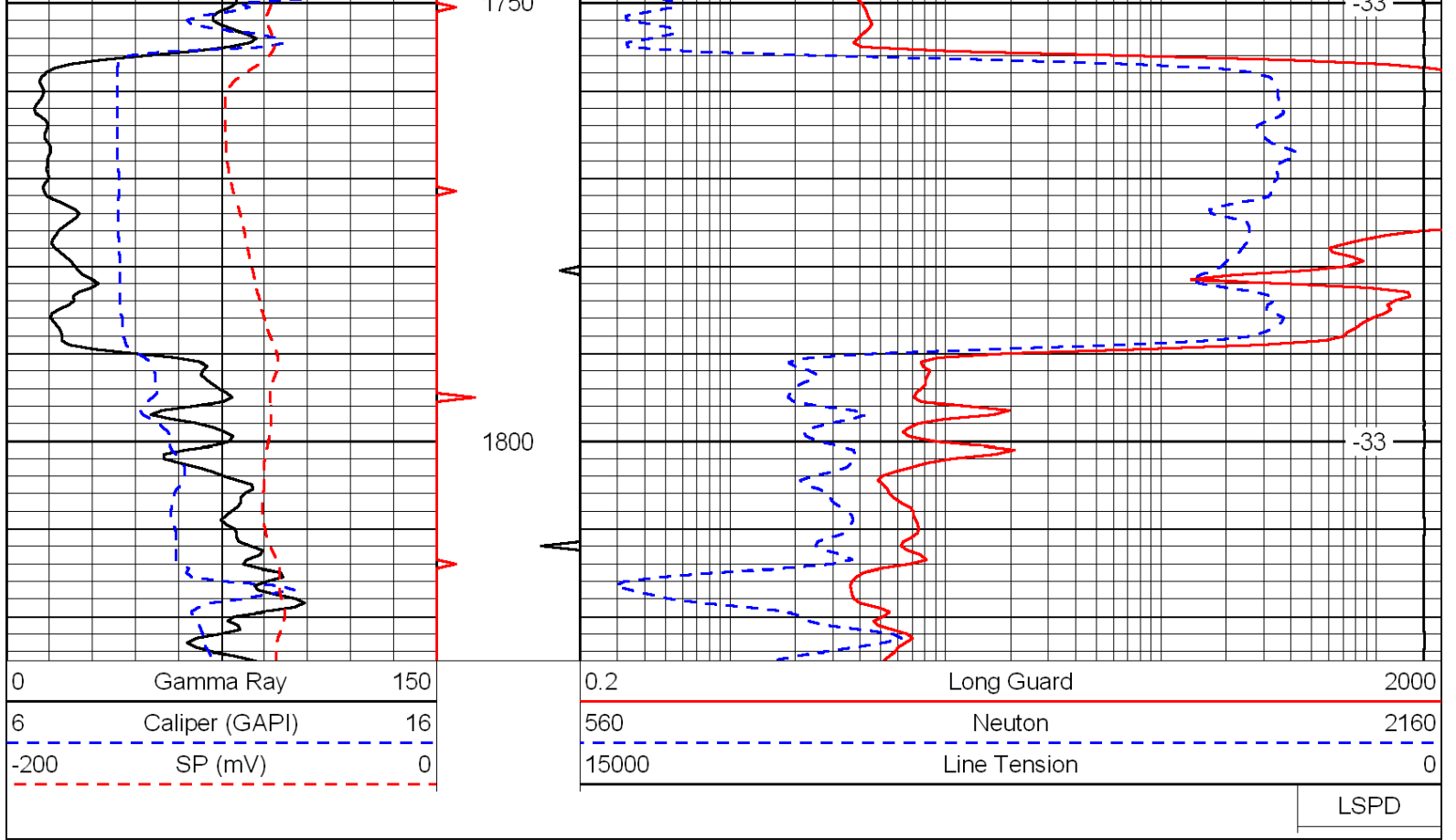
Database File: c:\warrior\data\venture_keiswetter no. 1-17\venture_keiswetter_1-17hd.db
 Dataset Pathname: rag/ventrag
 Presentation Format: rag
 Dataset Creation: Wed Jun 15 16:06:13 2011
 Charted by: Depth in Feet scaled 1:240

0	Gamma Ray	150
6	Caliper (GAPI)	16
-200	SP (mV)	0

0.2	Long Guard	2000
560	Neutron	2160
15000	Line Tension	0

LSPD





Database File: c:\warrior\data\venture_keiswetter no. 1-17\venture_keiswetter_1-17hd.db
 Dataset Pathname: rag/ventrag
 Presentation Format: rag
 Dataset Creation: Wed Jun 15 16:06:13 2011
 Charted by: Depth in Feet scaled 1:240

