

DRILL STEM TEST REPORT

woolsey Operating Company

Miller c # 2

125 North Market Suite 1000
Wichita, Kansas 67202-1729

10-35s-12w Barber

Job Ticket: 15776

DST#: 1

ATTN: Scott Alberg

Test Start: 2011.03.14 @ 09:45:00

GENERAL INFORMATION:

Formation: **Cherokee-Mississippi**

Deviated: No Whipstock: ft (KB)

Time Tool Opened: 00:00:00

Time Test Ended: 00:00:00

Test Type: Conventional Bottom Hole (Initial)

Tester: Gene Budig

Unit No: 3335-

Interval: 4742.00 ft (KB) To 4880.00 ft (KB) (TVD)

Reference Elevations: 1426.00 ft (KB)

Total Depth: 4880.00 ft (KB) (TVD)

1417.00 ft (CF)

Hole Diameter: 7.88 inches Hole Condition: Fair

KB to GR/CF: 9.00 ft

Serial #: 8525

Inside

Press @ Run Depth: 1353.57 psia @ 4875.92 ft (KB)

Capacity: 5000.00 psia

Start Date: 2011.03.13

End Date:

2011.03.13

Last Calib.:

2011.03.14

Start Time: 09:45:00

End Time:

19:58:30

Time On Btm:

2011.03.13 @ 12:31:00

Time Off Btm:

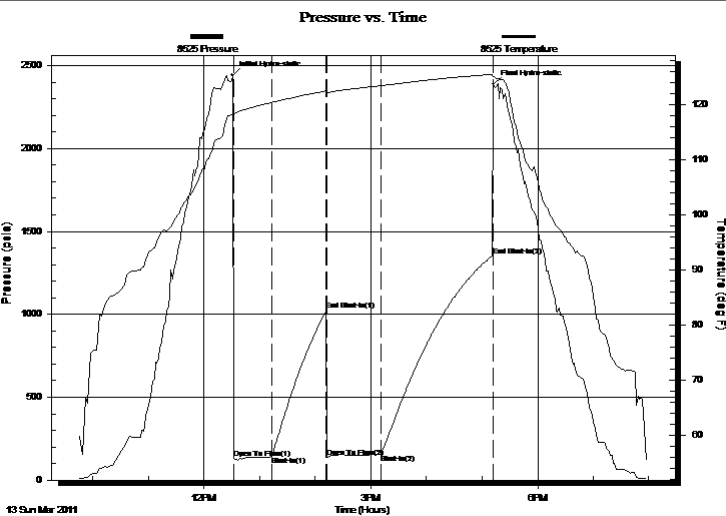
2011.03.13 @ 17:12:30

TEST COMMENT: 1st Opening 30 Minutes Fair blow built to the bottom of a 5 gallon bucket in 21 minutes

1st Shut-In 60 Minutes-w eak blow back

2nd Opening 60 Minutes-Good blow built to the bottom of a 5 gallon bucket in 1 minute and decreased

2nd Shut-In 120 Minutes- Weak blow back



PRESSURE SUMMARY

Time (Min.)	Pressure (psia)	Temp (deg F)	Annotation
0	2442.64	118.34	Initial Hydro-static
1	130.28	118.03	Open To Flow (1)
43	141.20	120.42	Shut-In(1)
102	1025.04	122.51	End Shut-In(1)
102	135.47	122.19	Open To Flow (2)
161	153.70	123.48	Shut-In(2)
281	1353.57	125.52	End Shut-In(2)
282	2388.21	125.10	Final Hydro-static

Recovery

Length (ft)	Description	Volume (bbl)
0.00	Gas to surface 55 minutes on 2nd flow	0.00
125.00	Drilling Mud	0.61
0.00	There w as a show of oil betw een the	0.00
0.00	Shut-In and Hydraulic tools	0.00

Gas Rates

	Choke (inches)	Pressure (psia)	Gas Rate (Mcf/d)



DRILL STEM TEST REPORT

TOOL DIAGRAM

w oolsey Operating Company

Miller c # 2

125 North Market Suite 1000
Wichita, Kansas 67202-1729

10-35s-12w Barber

Job Ticket: 15776

DST#: 1

ATTN: Scott Alberg

Test Start: 2011.03.14 @ 09:45:00

Tool Information

Drill Pipe:	Length: 4375.00 ft	Diameter: 3.80 inches	Volume: 61.37 bbl	Tool Weight:	2000.00 lb
Heavy Wt. Pipe:	Length: 0.00 ft	Diameter: 286.00 inches	Volume: 0.00 bbl	Weight set on Packer:	20000.00 lb
Drill Collar:	Length: 358.00 ft	Diameter: 2.25 inches	Volume: 1.76 bbl	Weight to Pull Loose:	85000.00 lb
			<u>Total Volume: 63.13 bbl</u>	Tool Chased	0.00 ft
Drill Pipe Above KB:	20.00 ft			String Weight: Initial	70000.00 lb
Depth to Top Packer:	4742.00 ft			Final	72000.00 lb
Depth to Bottom Packer:	ft				
Interval between Packers:	137.92 ft				
Tool Length:	166.92 ft				
Number of Packers:	2	Diameter: 6.75 inches			
Tool Comments:					

Tool Description	Length (ft)	Serial No.	Position	Depth (ft)	Accum. Lengths
Change Over Sub	1.00			4714.00	
Shut-In Tool	5.00			4719.00	
Hydroic Tool	5.00			4724.00	
Jars	6.00			4730.00	
Safety Joint	2.00			4732.00	
Packer	5.00			4737.00	29.00 Bottom Of Top Packer
Packer	5.00			4742.00	
Perforations	10.00			4752.00	
Change Over Sub	0.75			4752.75	
Drill Pipe	94.42			4847.17	
Change Over Sub	0.75			4847.92	
Perforations	27.00			4874.92	
Recorder	1.00	8525	Inside	4875.92	
Recorder	1.00	95712	Outside	4876.92	
Bullnose	3.00			4879.92	137.92 Bottom Packers & Anchor

Total Tool Length: 166.92



DRILL STEM TEST REPORT

FLUID SUMMARY

w oolsey Operating Company

Miller c # 2

125 North Market Suite 1000
Wichita, Kansas 67202-1729

10-35s-12w Barber

Job Ticket: 15776

DST#: 1

ATTN: Scott Alberg

Test Start: 2011.03.14 @ 09:45:00

Mud and Cushion Information

Mud Type: Gel Chem
Mud Weight: 9.00 lb/gal
Viscosity: 51.00 sec/qt
Water Loss: 8.00 in³
Resistivity: ohm.m
Salinity: 3500.00 ppm
Filter Cake: 1.00 inches

Cushion Type:
Cushion Length: ft
Cushion Volume: bbl
Gas Cushion Type:
Gas Cushion Pressure: psia

Oil API: deg API
Water Salinity: ppm

Recovery Information

Recovery Table

Length ft	Description	Volume bbl
0.00	Gas to surface 55 minutes on 2nd flow	0.000
125.00	Drilling Mud	0.615
0.00	There was a show of oil between the	0.000
0.00	Shut-In and Hydraulic tools	0.000

Total Length: 125.00 ft Total Volume: 0.615 bbl

Num Fluid Samples: 0

Num Gas Bombs: 0

Serial #:

Laboratory Name:

Laboratory Location:

Recovery Comments:

Serial #: 8525

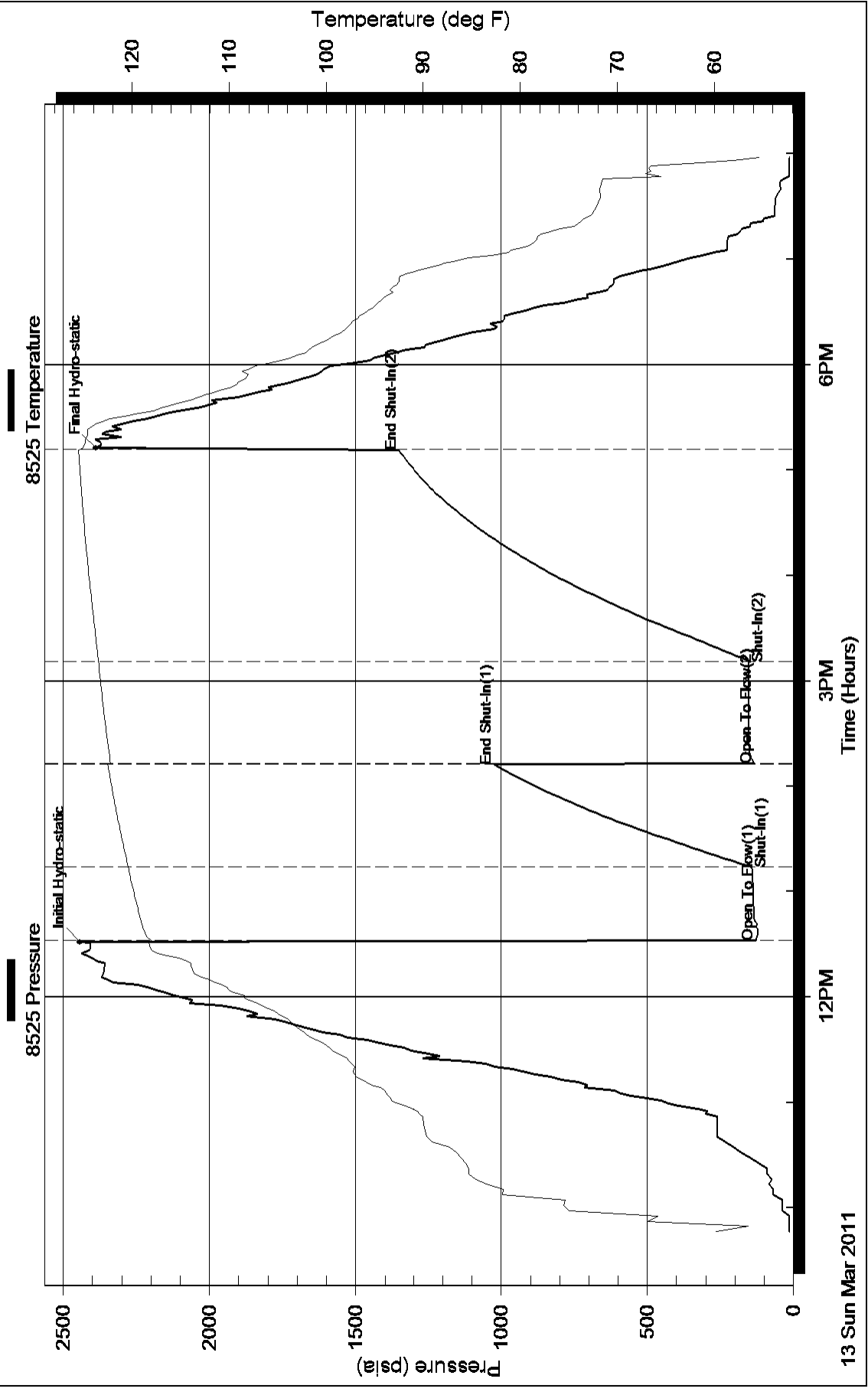
Inside

Woodsey Operating Company

10-35s-12w Barber

DST Test Number: 1

Pressure vs. Time



13 Sun Mar 2011

12PM

3PM

6PM

Time (Hours)