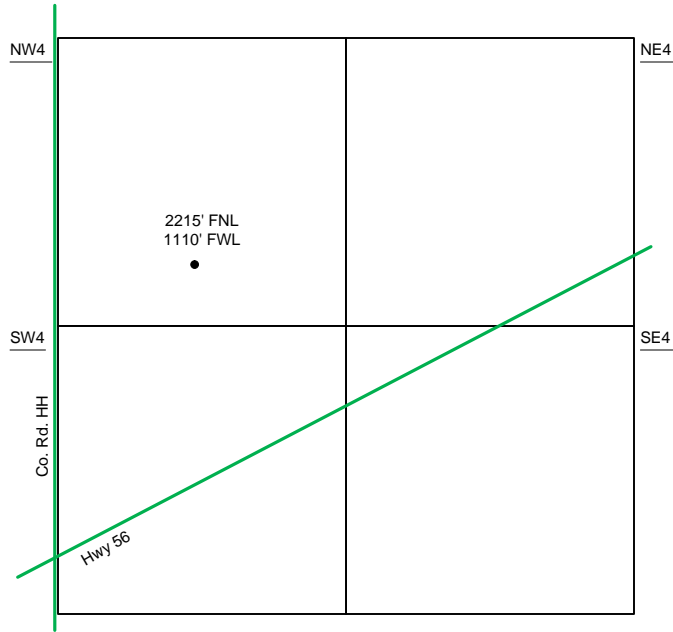
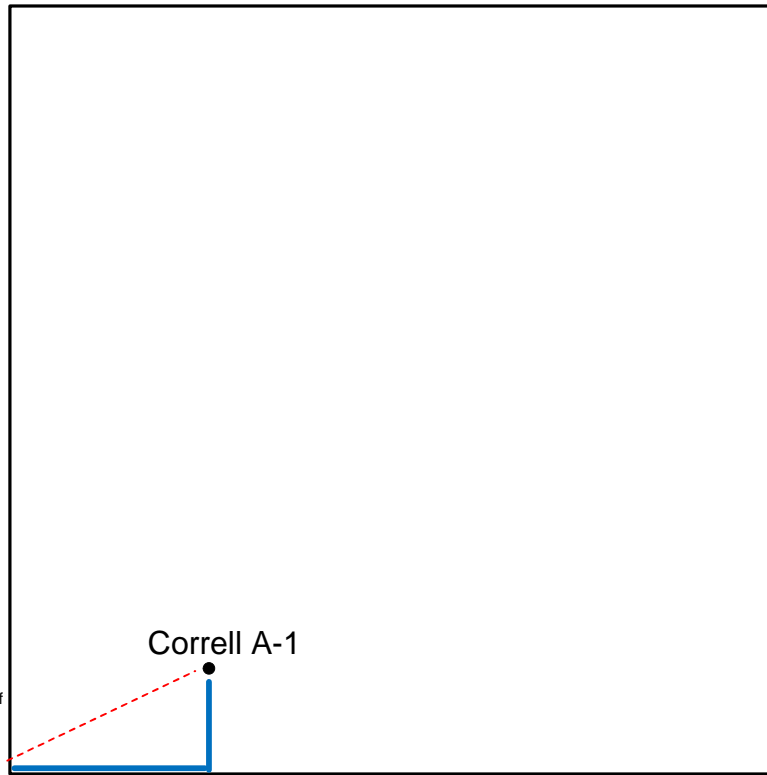


Proposed Plan of Construction  
 Correll A-1  
 Sec 8-T30S-R33W  
 Haskell County, KS



Sec 8 - T30S - R33W

NW/4



The PROPOSED Tank Battery for the Correll A-1 exists in the NE quarter of the adjoining section.

- Well Location
- Lease Roads
- - - Proposed Pipeline
- Tank Battery Equipment
- Power Lines
- - - Existing Pipeline

Detail of  
 NW/4 Sec 8-T30S-R33W

Note-Drawing **Not** to Scale

Site Diagram  
 Correll A-1  
 July 6, 2011

