

GEOLOGIST'S REPORT

DRILLING TIME AND SAMPLE LOG

BACH OIL PRODUCTION

WELL: BECKER UNIT #1

LOC.: 180' FNL & 1650 FEL
SEC. 29-4-20W

PHILLIPS COUNTY, KANSAS
API: 15-147-20647-00-00

DRILLING CONTR.: MURFIN RIG #16
SPUD: 06-07-11 COMP: 06-10-11
MUD UP: 2800' TYPE MUD: CHEM.
DRILL TIME: 3000-RTD
RTD: 3475' LTD: 3475'
SAMPLES SAVED: 3000'-RTD
GEOLOGIST: ROBERT J. PETERSEN

ELEVATION

KB: 2058'
GL: 2053'

LOG MEASURED FROM: KB

SURFACE CASING

8 5/8" surface csg.
Set @220' KB.
Cem. w/160sx Common,
3% CC, 2% Gel.

PRODUCTION CASING

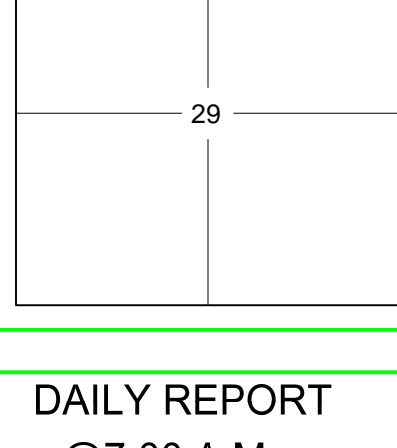
N/A D&A

WELL LOG SURVEYS

RAG

ELECTRIC LOG TOPS

FORMATION	DEPTH	DATUM	Position
Stone Corral	1651	+407	-2
Base Stone Corral	1680	+378	-8
Topeka	3005	-947	-4
Heebner	3218	-1160	flat
Toronto	3245	-1187	-1
Lansing	3262	-1204	-2
Base Kansas City	3455	-1397	+1



REFERENCE WELL:

Wilcot & B&R
Albright #1 D&A
NW NW SW
21-4-20W
2065KB

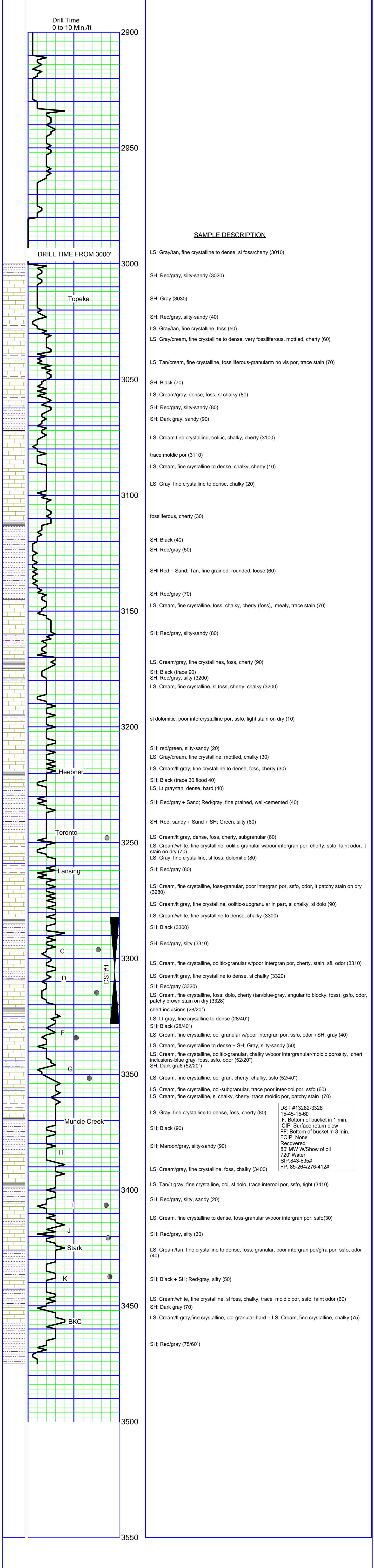
REMARKS AND RECOMMENDATIONS

Due to the drill stem test results and comparative log analysis the operator plugged and abandoned this test Respectfully submitted,

Robert J. Petersen
Robert J. Petersen June 17, 2011

DAILY REPORT @7:00 A.M.

06-06-11 MIRU/Spud
06-07-11 610'
06-08-11 2335'
06-09-11 3175'
06-10-11 3475'



DST #13282-3328
15-45-15-60"
IF: Bottom of bucket in 1 min.
ICIP: Surface return blow
FF: Bottom of bucket in 3 min.
FCIP: None
Recovered:
80' MW W/Show of oil
720' Water
SIP:843-835#
FP: 85-264/276-412#