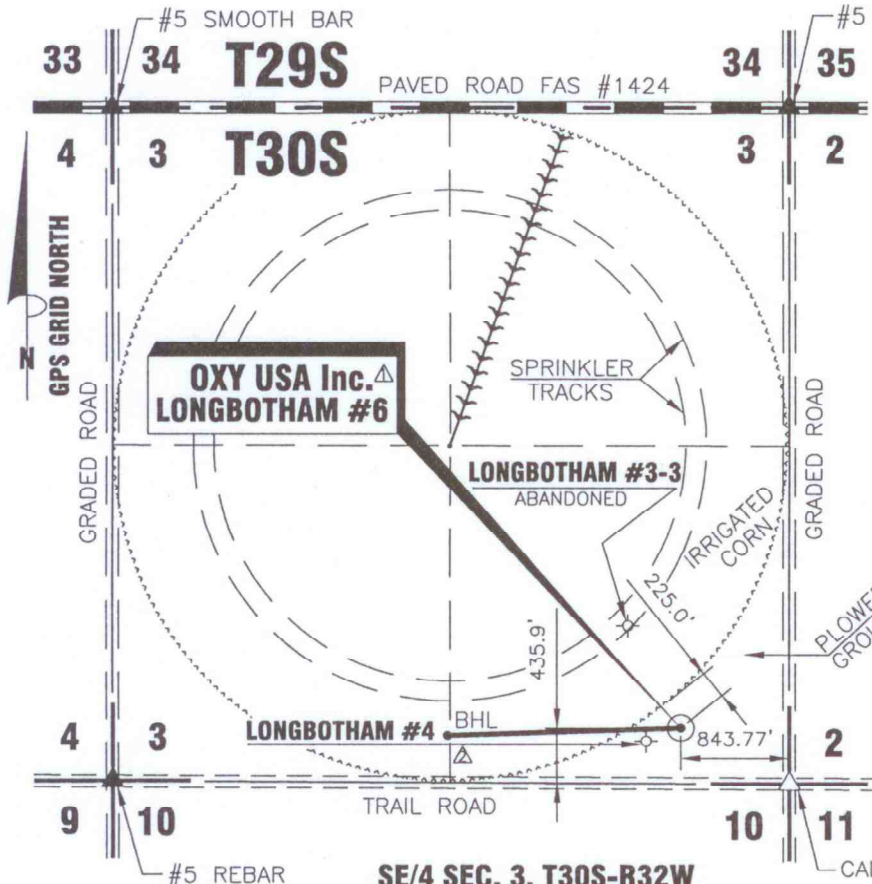


# T30S-R32W



**SE/4 SEC. 3, T30S-R32W  
HASKELL COUNTY, KANSAS**

DATE 5/19/2011

OPERATOR OXY USA, Inc.

WELL NAME LONGBOTHAM #6 Δ

LOCATION SE/4 SEC. 3, T30S-R32W

FOOTAGES & 843.77' F E L

RELATIONS 435.90' F S L

ELEVATION 2886.73'

Δ BOTTOM HOLE LOCATION

FOOTAGES & Δ 366.20' F Δ S L

RELATIONS Δ 2659.87' F Δ E L

DISTANCE TO EXISTING WELL  
288.70' LONGBOTHAM #4

AUTHORIZED BY BETH HICKERT

CALC. ON TIES

DRIVING DIRECTIONS USED TO STAKE  
WELL FROM KNOWN LANDMARK OR CITY  
FROM:

**FROM THE INTERSECTION OF HIGHWAY #83 &  
FAS #1424, WEST OF SUBLETTE, KS; THENCE  
EAST 4.0 MILES; THENCE SOUTH 1.0 MILE;  
THENCE EAST 843.77 FT; THENCE NORTH  
435.90 FT. INTO.**

CROP PLOWED GROUND

WATER WELL \_\_\_\_\_

NEAREST TOWER \_\_\_\_\_

AIRPORT \_\_\_\_\_

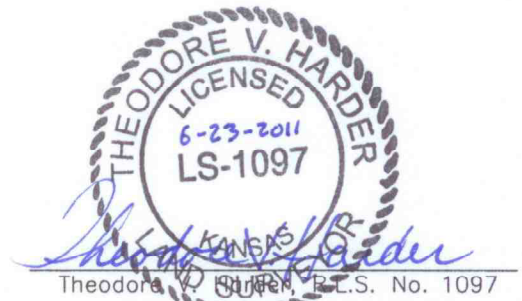
LATITUDE 37°27'41.13975" N = 37.461428° N

LONGITUDE 100°48'02.32223" W = 100.800645° W

STATE PLANE COORD. X = 1332291.71

KANSAS SOUTH ZONE Y = 297622.28  
NAD 27

NOTE: CONTRACTOR TO CONTACT ONE CALL @ 1-800-DIG SAFE  
PRIOR TO ANY EXCAVATION OR CONSTRUCTION.



**OXY USA Inc.**  
1117 N. HIGHWAY 27  
P.O. DRAWER 330  
ELKHART, KANSAS 67950  
(620)697-2500

**PROPOSED WELL LOCATION OF THE LONGBOTHAM #6  
LOCATED IN THE SE/4 SEC. 3, T30S - R32W  
HASKELL COUNTY, KANSAS**

DRAWN BY: DRF    CHECKED BY: TVH    APPROVED BY: \_\_\_\_\_    AUTHORIZED BY: B. HICKERT

NO.	DWN.	REVISIONS	DATE
1	DRF	NAME CHANGE & BHL	6/10/2011
2	DRF	BOTTOM HOLE LOCATION	6/22/2011

SCALE: 1"=1500'    DATE: 5/19/2011

WORK ORDER NO.:

**HARDER**  
AND ASSOCIATES "locating our world"  
LAND SURVEYING - GPS SPECIALISTS  
P.O. BOX 518 514 MORTON  
Elkhart, Kansas 67950  
Phone: (620) 697-2896  
Fax: (620) 697-4175  
E-MAIL: tharder@elkhart.com

CO KS NM OK