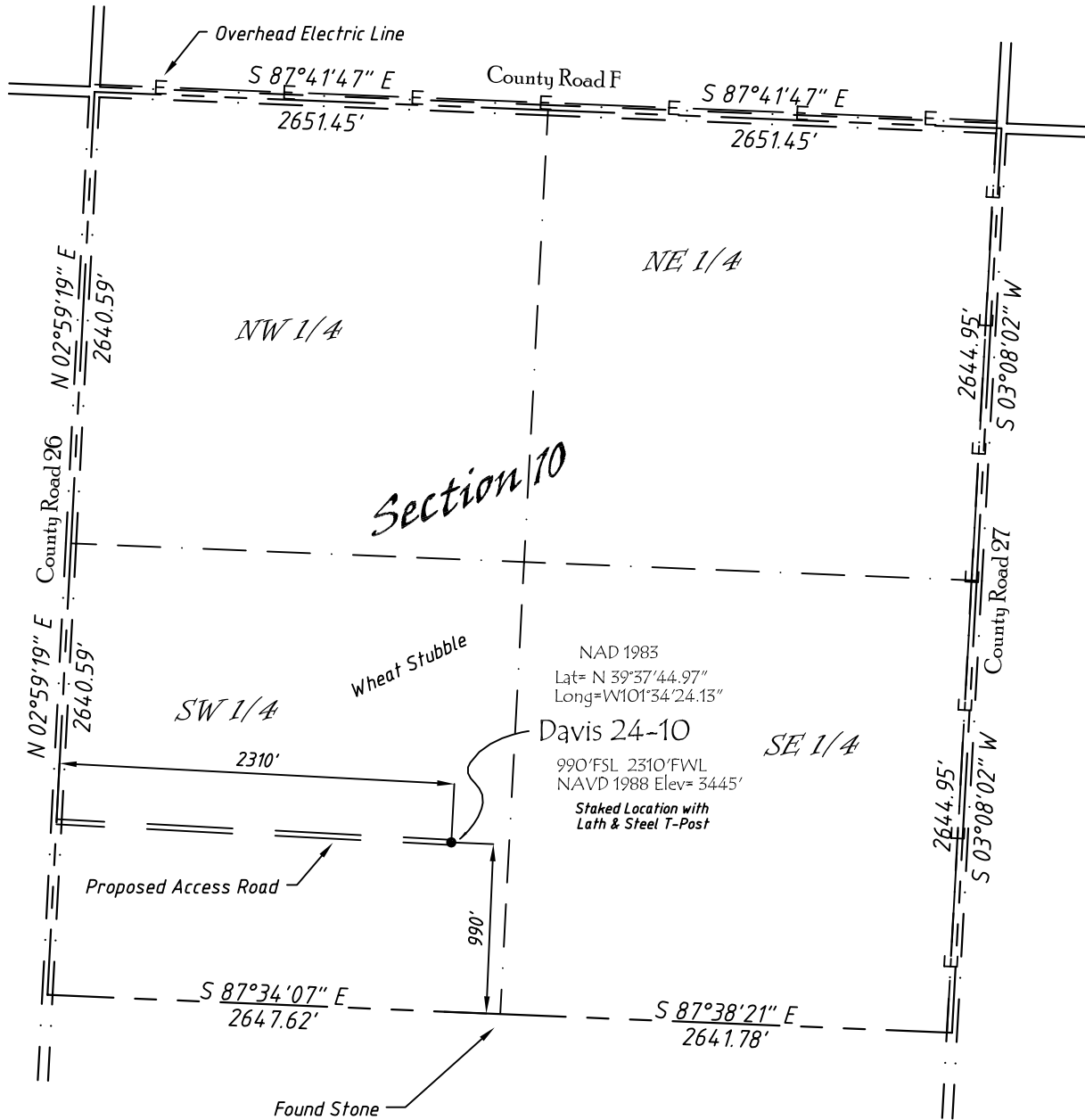


Well Location Map

Davis 24-10

SE 1/4, SW 1/4, Section 10, T5S, R38W, 6th P.M. Cheyenne County, Kansas
 990' FSL - 2310' FWL Elev=3445'



Copyright © 2011

Directions:

From the Intersection of the County Road 27 & Hwy 36 West of Bird City, KS,
 Go South on County Road 27, 8 miles to County Road F, then go W 1 Mile to
 County Road 26, then S 0.8 miles, Then E 2310' to Staked location.

This Drawing is for Construction Purposes Only

Noble Energy, Inc.		
DRAWN SP	DATE 7/25/11	Section 10
FB B76 P19	EQ HijPro	T5S, R38W, 6th P.M. Cheyenne County, KS
SCALE 1"=1000'	SHEET 1 of 1	PROJECT NO. 1570.193



402 Walnut
 Kanorado, KS
 785/399/2551