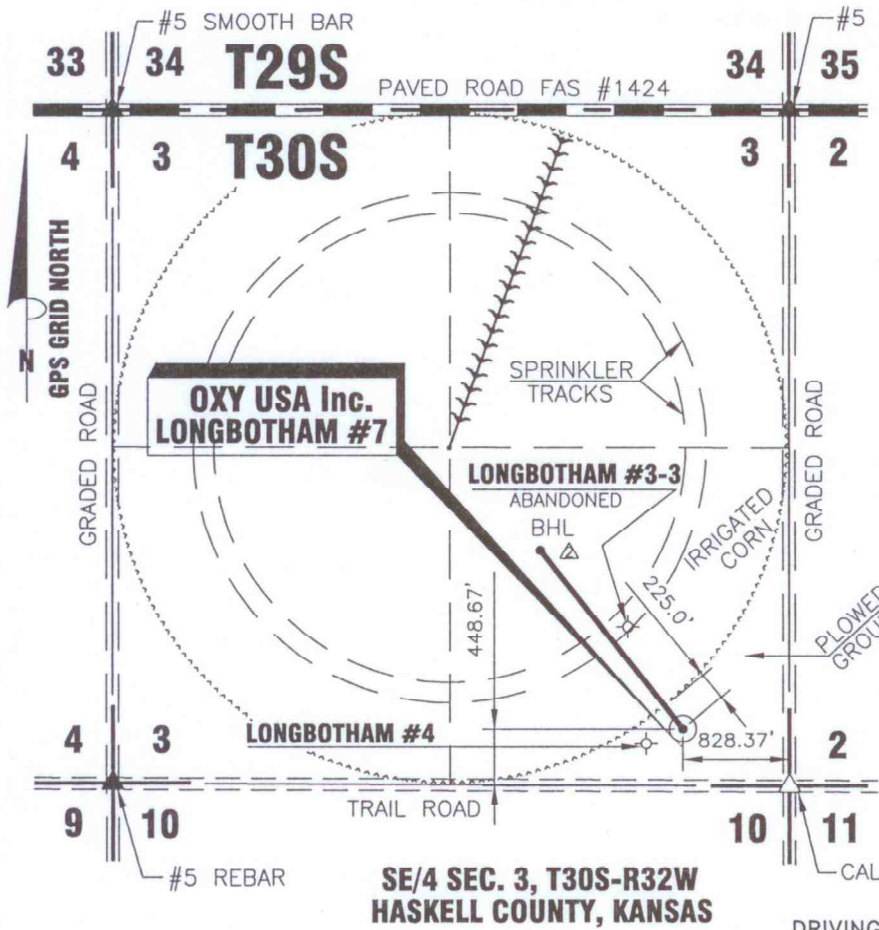


T30S-R32W



DATE 5/19/2011

OPERATOR OXY USA, Inc.

WELL NAME LONGBOTHAM #7

LOCATION SE/4 SEC. 3, T30S-R32W

FOOTAGES & 828.37' F E L

RELATIONS 448.67' F S L

ELEVATION 2886.85'

△ BOTTOM HOLE LOCATION

FOOTAGES & △ 1842.87' F △ S L

RELATIONS △ 1936.97' F △ E L

DISTANCE TO EXISTING WELL
307.72' LONGBOTHAM #4

AUTHORIZED BY BETH HICKERT

— CALC. ON TIES

DRIVING DIRECTIONS USED TO STAKE
WELL FROM KNOWN LANDMARK OR CITY
FROM:

**FROM THE INTERSECTION OF HIGHWAY #83 &
FAS #1424, WEST OF SUBLETTE, KS; THENCE
EAST 4.0 MILES; THENCE SOUTH 1.0 MILE;
THENCE EAST 828.37 FT; THENCE NORTH
448.67 FT. INTO.**

CROP PLOWED GROUND

WATER WELL _____

NEAREST TOWER _____

AIRPORT _____

LATITUDE 37°27'41.26426" N = 37.461462° N

LONGITUDE 100°48'02.13048" W = 100.800592° W

STATE PLANE COORD. X = 1332307.48

KANSAS SOUTH ZONE
NAD 27 Y = 297634.49

NOTE: CONTRACTOR TO CONTACT ONE CALL @ 1-800-DIG SAFE
PRIOR TO ANY EXCAVATION OR CONSTRUCTION.



OXY USA Inc.
1117 N. HIGHWAY 27
P.O. DRAWER 330
ELKHART, KANSAS 67950
(620)697-2500

**PROPOSED WELL LOCATION OF THE LONGBOTHAM #7
LOCATED IN THE SE/4 SEC. 3, T30S - R32W
HASKELL COUNTY, KANSAS**

DRAWN BY: DRF CHECKED BY: TVH APPROVED BY: _____ AUTHORIZED BY: B. HICKERT

NO.	DWN.	REVISIONS	DATE
△	DRF	BOTTOM HOLE LOCATION	6/10/2011
△	DRF	BOTTOM HOLE LOCATION	6/22/2011

SCALE: 1" = 1500' DATE: 5/19/2011

WORK ORDER NO.:

HARDER
AND ASSOCIATES "locating our world"
LAND SURVEYING - GPS SPECIALISTS
P.O. BOX 518 514 MORTON
Elkhart, Kansas 67950
Phone: (620) 697-2696
Fax: (620) 697-4175
E-MAIL: tharder@elkhart.com

CO KS NM OK