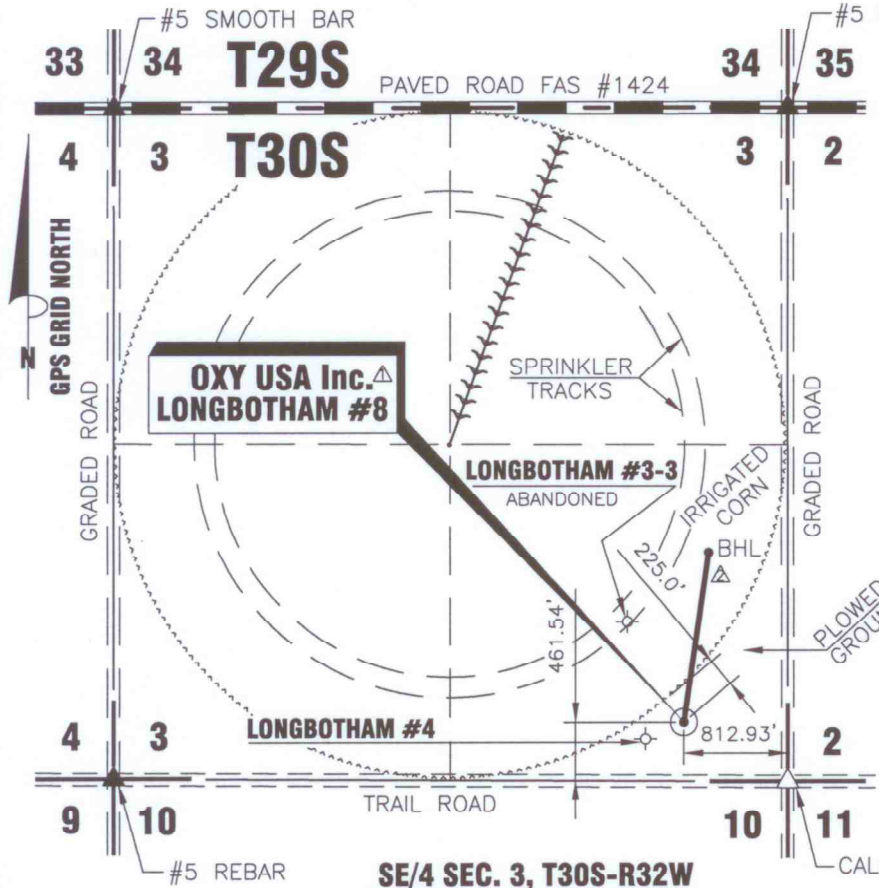


T30S-R32W



DATE 5/19/2011

OPERATOR OXY USA, Inc.

WELL NAME LONGBOTHAM #8 Δ

LOCATION SE/4 SEC. 3, T30S-R32W

FOOTAGES & 812.93' F E L

RELATIONS 461.54' F S L

ELEVATION 2886.78'

Δ BOTTOM HOLE LOCATION

FOOTAGES & Δ 1798.04' F Δ S L

RELATIONS Δ 618.03' F Δ E L

DISTANCE TO EXISTING WELL 326.90' LONGBOTHAM #4

AUTHORIZED BY BETH HICKERT

CALC. ON TIES

**SE/4 SEC. 3, T30S-R32W
HASKELL COUNTY, KANSAS**

CROP PLOWED GROUND

WATER WELL _____

NEAREST TOWER _____

AIRPORT _____

LATITUDE 37°27'41.39028" N = 37.461497° N

LONGITUDE 100°48'01.93877" W = 100.800539° W

STATE PLANE COORD. X = 1332323.24

KANSAS SOUTH ZONE Y = 297646.85

NAD 27

DRIVING DIRECTIONS USED TO STAKE
WELL FROM KNOWN LANDMARK OR CITY
FROM:
**FROM THE INTERSECTION OF HIGHWAY #83 &
FAS #1424, WEST OF SUBLETTE, KS; THENCE
EAST 4.0 MILES; THENCE SOUTH 1.0 MILE;
THENCE EAST 812.93 FT; THENCE NORTH
461.54 FT. INTO.**



NOTE: CONTRACTOR TO CONTACT ONE CALL @ 1-800-DIG SAFE PRIOR TO ANY EXCAVATION OR CONSTRUCTION.

	1117 N. HIGHWAY 27 P.O. DRAWER 330 ELKHART, KANSAS 67950 (620)697-2500	NO. DWN. REVISIONS DATE Δ DRF NAME CHANGE & BHL 6/10/2011 Δ DRF BOTTOM HOLE LOCATION 6/22/2011	AND ASSOCIATES "locating our world" LAND SURVEYING - GPS SPECIALISTS P.O. BOX 518 514 MORTON Elkhart, Kansas 67950 Phone: (620) 697-2696 Fax: (620) 697-4175 E-MAIL: tharder@elkhart.com
	PROPOSED WELL LOCATION OF THE LONGBOTHAM #8 LOCATED IN THE SE/4 SEC. 3, T30S - R32W HASKELL COUNTY, KANSAS	SCALE: 1"=1500' DATE: 5/19/2011 WORK ORDER NO.:	
DRAWN BY: DRF CHECKED BY: TVH APPROVED BY: _____ AUTHORIZED BY: B. HICKERT			