



Notice: Fill out COMPLETELY and return to Conservation Division at the address below within 60 days from plugging date.

KANSAS CORPORATION COMMISSION 1059623
OIL & GAS CONSERVATION DIVISION

Form CP-4
March 2009

Type or Print on this Form
Form must be Signed
All blanks must be Filled

WELL PLUGGING RECORD
K.A.R. 82-3-117

OPERATOR: License #: _____
 Name: _____
 Address 1: _____
 Address 2: _____
 City: _____ State: _____ Zip: _____ + _____
 Contact Person: _____
 Phone: (_____) _____
 Type of Well: (Check one) Oil Well Gas Well OG D&A Cathodic
 Water Supply Well Other: _____ SWD Permit #: _____
 ENHR Permit #: _____ Gas Storage Permit #: _____
 Is ACO-1 filed? Yes No If not, is well log attached? Yes No
 Producing Formation(s): List All (If needed attach another sheet)
 _____ Depth to Top: _____ Bottom: _____ T.D. _____
 _____ Depth to Top: _____ Bottom: _____ T.D. _____
 _____ Depth to Top: _____ Bottom: _____ T.D. _____

API No. 15 - _____
 Spot Description: _____
 _____ - _____ - _____ Sec. _____ Twp. _____ S. R. _____ East West
 _____ Feet from North / South Line of Section
 _____ Feet from East / West Line of Section
 Footages Calculated from Nearest Outside Section Corner:
 NE NW SE SW
 County: _____
 Lease Name: _____ Well #: _____
 Date Well Completed: _____
 The plugging proposal was approved on: _____ (Date)
 by: _____ (KCC District Agent's Name)
 Plugging Commenced: _____
 Plugging Completed: _____

Show depth and thickness of all water, oil and gas formations.

| Oil, Gas or Water Records | | Casing Record (Surface, Conductor & Production) | | | |
|---------------------------|---------|---|------|---------------|------------|
| Formation | Content | Casing | Size | Setting Depth | Pulled Out |
| | | | | | |
| | | | | | |
| | | | | | |
| | | | | | |

Describe in detail the manner in which the well is plugged, indicating where the mud fluid was placed and the method or methods used in introducing it into the hole. If cement or other plugs were used, state the character of same depth placed from (bottom), to (top) for each plug set.

Plugging Contractor License #: _____ Name: _____
 Address 1: _____ Address 2: _____
 City: _____ State: _____ Zip: _____ + _____
 Phone: (_____) _____
 Name of Party Responsible for Plugging Fees: _____
 State of _____ County, _____, ss.
 _____ Employee of Operator or Operator on above-described well,
 (Print Name)

being first duly sworn on oath, says: That I have knowledge of the facts statements, and matters herein contained, and the log of the above-described well is as filed, and the same are true and correct, so help me God.

Submitted Electronically

Mail to: KCC - Conservation Division, 130 S. Market - Room 2078, Wichita, Kansas 67202

The Road to Excellence Starts with Safety

| | | | |
|---------------------------------------|-------------------------------|-----------------------------------|------------------------|
| Sold To #: 348223 | Ship To #: 2860053 | Quote #: | Sales Order #: 8267924 |
| Customer: EOG RESOURCES INC EBUSINESS | | Customer Rep: Knox, Mike | |
| Well Name: Hittle Trust | Well #: 1 #1 | API/UWI #: | |
| Field: | City (SAP): HUGOTON | County/Parish: Stevens | State: Kansas |
| Contractor: KENAI | Rig/Platform Name/Num: 58 | | |
| Job Purpose: Plug to Abandon Service | | | |
| Well Type: Development Well | | Job Type: Plug to Abandon Service | |
| Sales Person: HESTON, MYRON | Srvc Supervisor: HAGEE, MILES | MBU ID Emp #: 427231 | |

Job Personnel

| HES Emp Name | Exp Hrs | Emp # | HES Emp Name | Exp Hrs | Emp # | HES Emp Name | Exp Hrs | Emp # |
|-------------------------|---------|--------|-------------------|---------|--------|-----------------|---------|--------|
| BERUMEN, EDUARDO | 7.5 | 267804 | CHAVEZ, ANTHONY P | 7.5 | 479869 | DEETZ, DONALD E | 7.5 | 389855 |
| HAGEE, MILES Killion | 7.5 | 427231 | | | | | | |

Equipment

| HES Unit # | Distance-1 way | HES Unit # | Distance-1 way | HES Unit # | Distance-1 way | HES Unit # | Distance-1 way |
|------------|----------------|------------|----------------|------------|----------------|------------|----------------|
| 10240236 | 25 mile | 10240245 | 25 mile | 11138994 | 25 mile | 11149169 | 25 mile |
| 11256865 | 25 mile | | | | | | |

Job Hours

| Date | On Location Hours | Operating Hours | Date | On Location Hours | Operating Hours | Date | On Location Hours | Operating Hours |
|------------|-------------------|-----------------|------------|-------------------|-----------------|------|-------------------|-----------------|
| 06/21/2011 | 1.5 | 1.0 | 06/22/2011 | 6.0 | 2.5 | | | |

TOTAL Total is the sum of each column separately

Job

Job Times

| Formation Name | Formation Depth (MD) Top | Bottom | Called Out | Date | Time | Time Zone |
|-----------------------------|--------------------------|-------------------|---------------|-----------------|-------|-----------|
| | | | On Location | 21 - Jun - 2011 | 17:00 | CST |
| Form Type | | BHST | On Location | 21 - Jun - 2011 | 22:00 | CST |
| Job depth MD | 1720. ft | Job Depth TVD | Job Started | 22 - Jun - 2011 | 23:50 | CST |
| Water Depth | | Wk Ht Above Floor | Job Completed | 22 - Jun - 2011 | 04:15 | CST |
| Perforation Depth (MD) From | | To | Departed Loc | 21 - Jun - 2011 | 06:00 | CST |

Well Data

| Description | New / Used | Max pressure psig | Size in | ID in | Weight lbm/ft | Thread | Grade | Top MD ft | Bottom MD ft | Top TVD ft | Bottom TVD ft |
|----------------------|------------|-------------------|---------|-------|---------------|--------|-------|-----------|--------------|------------|---------------|
| Cement Plug | Unknown | | | | | | | | 60. | | |
| Cement Plug | Unknown | | | | | | | 450. | 450. | | |
| Cement Plug | Unknown | | | | | | | 650. | 650. | | |
| Cement Plug | Unknown | | | | | | | 1730. | 1730. | | |
| Production Open Hole | | | | 7.875 | | | | 1800. | 6000. | | |

Tools and Accessories

| Type | Size | Qty | Make | Depth | Type | Size | Qty | Make | Depth | Type | Size | Qty | Make |
|--------------|------|-----|------|-------|-------------|------|-----|------|-------|----------------|------|-----|------|
| Guide Shoe | | | | | Packer | | | | | Top Plug | | | |
| Float Shoe | | | | | Bridge Plug | | | | | Bottom Plug | | | |
| Float Collar | | | | | Retainer | | | | | SSR plug set | | | |
| Insert Float | | | | | | | | | | Plug Container | | | |
| Stage Tool | | | | | | | | | | Centralizers | | | |

Miscellaneous Materials

| Gelling Agt | Conc | Surfactant | Conc | Acid Type | Qty | Conc | % |
|---------------|------|------------|------|-----------|------|------|---|
| Treatment Fid | Conc | Inhibitor | Conc | Sand Type | Size | Qty | |

| Fluid Data | | | | | | | | | |
|--|------------------------------------|---------------------------------|---------|-----------------------------------|------------------------|---------------------------|------------------|--------------|------------------------|
| Stage/Plug #: 1 | | | | | | | | | |
| Fluid # | Stage Type | Fluid Name | Qty | Qty uom | Mixing Density lbm/gal | Yield ft ³ /sk | Mix Fluid Gal/sk | Rate bbl/min | Total Mix Fluid Gal/sk |
| 1 | PLUG AT 1720 | POZ PREMIUM 40/60 - SBM (15075) | 100.0 | sacks | 13.5 | 1.59 | 8.01 | | 8.01 |
| | 2 % | BENTONITE, BULK (100003682) | | | | | | | |
| | 0.25 lbm | POLY-E-FLAKE (101216940) | | | | | | | |
| | 8.007 Gal | FRESH WATER | | | | | | | |
| 2 | PLUG AT 690 ft | POZ PREMIUM 40/60 - SBM (15075) | 50.0 | sacks | 13.5 | 1.59 | 8.01 | | 8.01 |
| | 2 % | BENTONITE, BULK (100003682) | | | | | | | |
| | 0.25 lbm | POLY-E-FLAKE (101216940) | | | | | | | |
| | 8.007 Gal | FRESH WATER | | | | | | | |
| 3 | PLUG FROM 0 ft TO 60 ft | POZ PREMIUM 40/60 - SBM (15075) | 20.0 | sacks | 13.5 | 1.57 | 7.74 | | 7.74 |
| | 2 % | BENTONITE, BULK (100003682) | | | | | | | |
| | 0.25 lbm | POLY-E-FLAKE (101216940) | | | | | | | |
| | 7.738 Gal | FRESH WATER | | | | | | | |
| 4 | PLUG: RAT 30 sk & MOUSE HOLE 20 sk | POZ PREMIUM 40/60 - SBM (15075) | 50.0 | sacks | 13.5 | 1.59 | 8.01 | | 8.01 |
| | 2 % | BENTONITE, BULK (100003682) | | | | | | | |
| | 0.25 lbm | POLY-E-FLAKE (101216940) | | | | | | | |
| | 8.007 Gal | FRESH WATER | | | | | | | |
| Calculated Values | | Pressures | | Volumes | | | | | |
| Displacement | 13.0 BBLs | Shut In: Instant | | Lost Returns | | Cement Slurry | 62 BBLs | Pad | |
| Top Of Cement | SURFACE | 5 Min | | Cement Returns | | Actual Displacement | 13 BBLs | Treatment | |
| Frac Gradient | | 15 Min | | Spacers | 0 | Load and Breakdown | | Total Job | |
| Rates | | | | | | | | | |
| Circulating | 4.5 BPM | Mixing | 4.5 BPM | Displacement | 4.0 BPM | Avg. Job | 4.0 BPM | | |
| Cement Left In Pipe | Amount | 0 ft | Reason | Drill Pipe | | | | | |
| Frac Ring # 1 @ | ID | Frac ring # 2 @ | ID | Frac Ring # 3 @ | ID | Frac Ring # 4 @ | ID | | |
| The Information Stated Herein Is Correct | | | | Customer Representative Signature | | | | | |

The Road to Excellence Starts with Safety

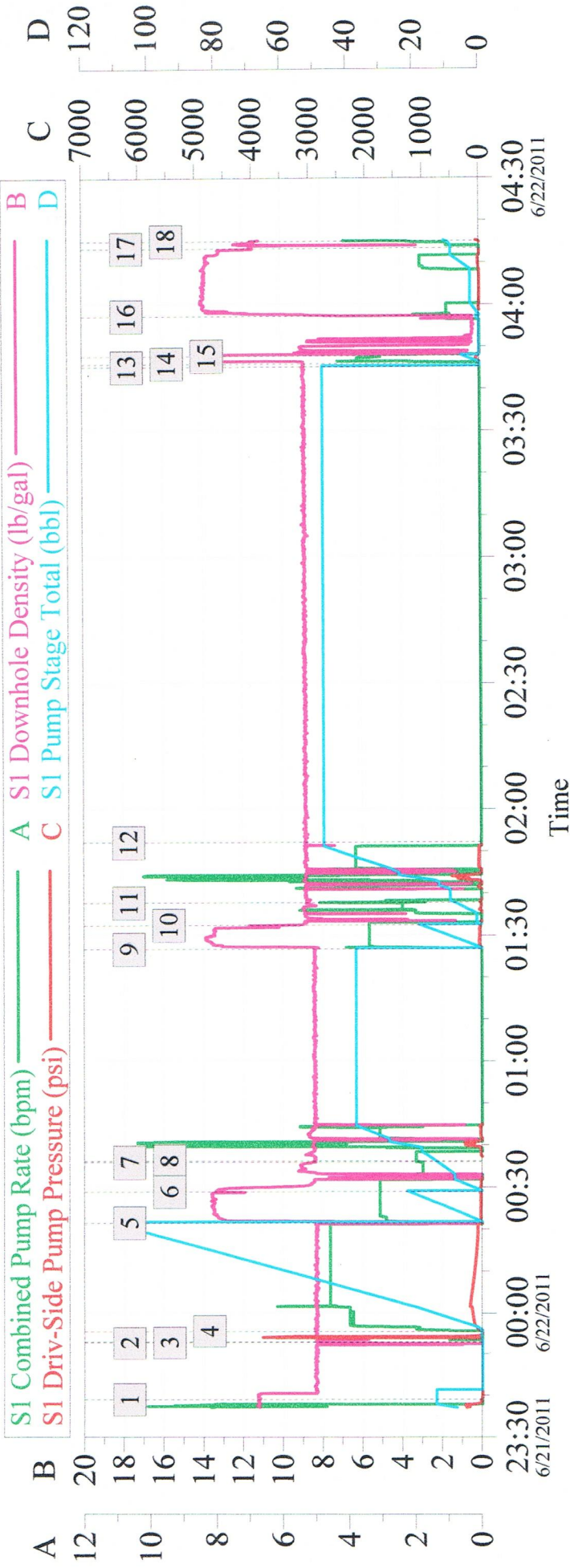
| | | | |
|---------------------------------------|-------------------------------|-----------------------------------|------------------------|
| Sold To #: 348223 | Ship To #: 2860053 | Quote #: | Sales Order #: 8267924 |
| Customer: EOG RESOURCES INC EBUSINESS | | Customer Rep: Knox, Mike | |
| Well Name: Hittle Trust | Well #: 1 #1 | API/UWI #: | |
| Field: | City (SAP): HUGOTON | County/Parish: Stevens | State: Kansas |
| Legal Description: | | | |
| Lat: | | Long: | |
| Contractor: KENAI | Rig/Platform Name/Num: 58 | | |
| Job Purpose: Plug to Abandon Service | | | Ticket Amount: |
| Well Type: Development Well | | Job Type: Plug to Abandon Service | |
| Sales Person: HESTON, MYRON | Srvc Supervisor: HAGEE, MILES | MBU ID Emp #: 427231 | |

| Activity Description | Date/Time | Cht # | Rate bbl/min | Volume bbl | | Pressure psig | | Comments |
|---------------------------------------|---------------------|-------|--------------|------------|-------|---------------|--------|---|
| | | | | Stage | Total | Tubing | Casing | |
| Call Out | 06/21/2011 17:00 | | | | | | | EOG HITTLE TRUST 1 WELL #1 CEMENT 4 1/2 PLUG TO ABANDON. |
| Depart Yard Safety Meeting | 06/21/2011 19:20 | | | | | | | DISCUSSED JOURNEY MANGAGEMENT AND CONVOY ROUTE. |
| Crew Leave Yard | 06/21/2011 19:30 | | | | | | | CONVOY TO LOCATION. |
| Arrive At Loc | 06/21/2011 22:00 | | | | | | | MET WITH CUSTOMER AND REVIEWED PLUG DEPTHS AND CEMENT VOLUMES, RIG TO RUN IN LAST 17 STANDS OF DRILL PIPE. |
| Assessment Of Location Safety Meeting | 06/21/2011 22:15 | | | | | | | LOCATED AND TESTED MIX WATER, SPOTTED PUMPING EQUIPMENT ADJACENT TO BULK CEMENT TRUCK. |
| Pre-Rig Up Safety Meeting | 06/21/2011 22:25 | | | | | | | DISCUSSED HAZARDS INVOLVED WITH RIGGING UP EQUIPMENT, POINTED OUT RED ZONES TO EXERCISE CAUTION WHILE WORKING NEAR THESE AREAS. |
| Rig-Up Equipment | 06/21/2011 22:35 | | | | | | | RIG UP HES LINES TO DRILLING PLATFORM. |
| Activity Description | Date/Time | Cht # | Rate bbl/min | Volume bbl | | Pressure psig | | Comments |
| | | | | Stage | Total | Tubing | Casing | |

| | | | | | | | | |
|---|---------------------|--|-----|-----|--|--|--------|---|
| Rig-Up Completed | 06/21/2011 23:30 | | | | | | | PREPARE PUMPING EQUIPMENT FOR CEMENTING OPERATION. |
| Pre-Job Safety Meeting | 06/21/2011 23:45 | | | | | | | DISCUSSED PUMPING SCHEDULE WITH RIG CREW AND CUSTOMER REPRESENTATIVE, POINTED OUT RED ZONES TO AVOID DURING CEMENTING OPERATION AND POINTED OUT EMERGENCY MUSTER POINTS AND LOCATION OF NEAREST HOSPITAL. |
| Start Job | 06/21/2011 23:50 | | | | | | | |
| Test Lines | 06/21/2011 23:51 | | 1 | 1 | | | 2500.0 | TEST HES LINES FOR SAFETY. |
| Circulate Well | 06/21/2011 23:55 | | 4.5 | 98 | | | 132.0 | CIRCULATE CASING CAPACITY WITH FRESH WATER. |
| Pump Cement | 06/22/2011 00:21 | | 3.5 | 28 | | | | 100 SACK CLASS H POZMIX PLUG WITH 2% BENTONITE, 0.25 LBM POLY-E-FLAKE SET AT 1720' |
| Pump Displacement | 06/22/2011 00:28 | | 4 | 13 | | | 27.0 | FRESH WATER DISPLACEMENT. |
| Shutdown | 06/22/2011 00:35 | | | | | | | PULL HES LINES OFF OF DRILL PIPE, RIG TO LAY DOWN 23 STANDS. |
| Clean Lines | 06/22/2011 00:36 | | | | | | | WASH UP MIX TUB AND PUMPING EQUIPMENT. |
| Pump Cement | 06/22/2011 01:26 | | 3 | 14 | | | 128.0 | 50 SACK CLASS H POZMIX PLUG WITH 2% BENTONITE, 0.25 LBM POLY-E-FLAKE SET AT 690' |
| Pump Displacement | 06/22/2011 01:32 | | 3 | 3.4 | | | 32.0 | FRESH WATER DISPLACEMENT. |
| Shutdown | 06/22/2011 01:35 | | | | | | | |
| Clean Lines | 06/22/2011 01:36 | | | | | | | |
| Wait on Customer or Customer Sub-Contractor Equip | 06/22/2011 01:45 | | | | | | | RIG LAYING DOWN DRILL PIPE, PULLING BOP |

| Activity Description | Date/Time | Cht # | Rate bbl/min | Volume bbl | | Pressure psig | | Comments |
|---|---------------------|-------|--------------|------------|-------|---------------|--------|---|
| | | | | Stage | Total | Tubing | Casing | |
| Wait on Customer or Customer Sub-Contractor Equipment | 06/22/2011 03:40 | | | | | | | RIG COMPLETED PULLING BOP. |
| Pump Cement | 06/22/2011 03:45 | | 3 | 5.5 | | | 62.0 | 20 SACK CLASS H POZMIX PLUG WITH 2% BENTONITE, 0.25 LBM POLY-E-FLAKE SET AT 60' |
| Pump Displacement | 06/22/2011 03:47 | | 2 | 0.5 | | | 26.0 | FRESH WATER DISPLACEMENT. |
| Pump Cement | 06/22/2011 03:50 | | 2 | 8 | | | 47.0 | 20 SACK CLASS H POZMIX PLUG WITH 2% BENTONITE, 0.25 LBM POLY-E-FLAKE SET AT 60' CEMENT PLUG MOUSE HOLE. |
| Pump Cement | 06/22/2011 03:57 | | 2 | 6 | | | 56.0 | 30 SACK CLASS H POZMIX PLUG WITH 2% BENTONITE, 0.25 LBM POLY-E-FLAKE SET AT 60' CEMENT PLUG RAT HOLE. |
| End Job | 06/22/2011 04:13 | | | | | | | |
| Post-Job Safety Meeting (Pre Rig-Down) | 06/22/2011 04:20 | | | | | | | DISCUSSED HAZARDS INVOLVED WITH RIGGING UP EQUIPMENT, POINTED OUT RED ZONES TO EXERCISE CAUTION WHILE WORKING NEAR THESE AREAS. |
| Rig-Down Equipment | 06/22/2011 04:30 | | | | | | | BREAK DOWN HES LINES AND SECURE TO TRUCKS. |
| Rig-Down Completed | 06/22/2011 05:30 | | | | | | | PRE-TRIP TRUCKS AND ACCOUNT FOR ALL HES EQUIPMENT BEFORE DEPARTING LOCATION. |
| Depart Location Safety Meeting | 06/22/2011 05:45 | | | | | | | DISCUSSED JOURNEY MANAGEMENT AND CONVOY ROUTE. |
| Depart Location for Service Center or Other Site | 06/22/2011 06:00 | | | | | | | THANK YOU FROM HALLIBURTON AND OUR CREW. |

EOG HITTLE TRUST 1 WELL #1 CEMENT PLUG TO ABANDON



Global Event Log

| | | | | | |
|----|-------------------|--------------------|----|-------------------|--------------------|
| 1 | Starting Job | 6/21/2011 23:39:01 | 2 | Start Job | 6/21/2011 23:52:48 |
| 3 | Test Lines | 6/21/2011 23:52:53 | 4 | Circulate Well | 6/21/2011 23:55:39 |
| 5 | Pump Cement | 6/22/2011 00:21:34 | 6 | Pump Displacement | 6/22/2011 00:28:59 |
| 7 | Shutdown | 6/22/2011 00:35:57 | 8 | Clean Lines | 6/22/2011 00:36:13 |
| 9 | Pump Cement | 6/22/2011 01:26:48 | 10 | Pump Displacement | 6/22/2011 01:32:30 |
| 11 | Clean Lines | 6/22/2011 01:37:50 | 12 | Shutdown | 6/22/2011 01:52:13 |
| 13 | Pump Cement | 6/22/2011 03:45:18 | 14 | Pump Cement | 6/22/2011 03:46:03 |
| 15 | Pump Displacement | 6/22/2011 03:47:52 | 16 | Pump Cement | 6/22/2011 03:57:21 |
| 17 | End Job | 6/22/2011 04:13:24 | 18 | Ending Job | 6/22/2011 04:15:07 |

Customer: EOG RESOURCES INC.
 Well Description: HITTLE TRUST 1 WELL #1

Job Date: 21-Jun-2011

Sales Order #: 8267924