



KANSAS CORPORATION COMMISSION 1060073
OIL & GAS CONSERVATION DIVISION

Form ACO-1

June 2009

Form Must Be Typed

Form must be Signed

All blanks must be Filled

WELL COMPLETION FORM
WELL HISTORY - DESCRIPTION OF WELL & LEASE

OPERATOR: License # _____

Name: _____

Address 1: _____

Address 2: _____

City: _____ State: _____ Zip: _____ + _____

Contact Person: _____

Phone: (_____) _____

CONTRACTOR: License # _____

Name: _____

Wellsite Geologist: _____

Purchaser: _____

Designate Type of Completion:

- New Well Re-Entry Workover
- Oil WSW SWD SIOW
- Gas D&A ENHR SIGW
- OG GSW Temp. Abd.
- CM (Coal Bed Methane)
- Cathodic Other (Core, Expl., etc.): _____

If Workover/Re-entry: Old Well Info as follows:

Operator: _____

Well Name: _____

Original Comp. Date: _____ Original Total Depth: _____

- Deepening Re-perf. Conv. to ENHR Conv. to SWD
- Conv. to GSW
- Plug Back: _____ Plug Back Total Depth _____
- Commingled Permit #: _____
- Dual Completion Permit #: _____
- SWD Permit #: _____
- ENHR Permit #: _____
- GSW Permit #: _____

Spud Date or Recompletion Date Date Reached TD Completion Date or Recompletion Date

API No. 15 - _____

Spot Description: _____

_____ - _____ - _____ Sec. _____ Twp. _____ S. R. _____ East West

_____ Feet from North / South Line of Section

_____ Feet from East / West Line of Section

Footages Calculated from Nearest Outside Section Corner:

- NE NW SE SW

County: _____

Lease Name: _____ Well #: _____

Field Name: _____

Producing Formation: _____

Elevation: Ground: _____ Kelly Bushing: _____

Total Depth: _____ Plug Back Total Depth: _____

Amount of Surface Pipe Set and Cemented at: _____ Feet

Multiple Stage Cementing Collar Used? Yes No

If yes, show depth set: _____ Feet

If Alternate II completion, cement circulated from: _____

feet depth to: _____ w/ _____ sx cmt.

Drilling Fluid Management Plan

(Data must be collected from the Reserve Pit)

Chloride content: _____ ppm Fluid volume: _____ bbls

Dewatering method used: _____

Location of fluid disposal if hauled offsite: _____

Operator Name: _____

Lease Name: _____ License #: _____

Quarter _____ Sec. _____ Twp. _____ S. R. _____ East West

County: _____ Permit #: _____

AFFIDAVIT

I am the affiant and I hereby certify that all requirements of the statutes, rules and regulations promulgated to regulate the oil and gas industry have been fully complied with and the statements herein are complete and correct to the best of my knowledge.

Submitted Electronically

KCC Office Use ONLY

- Letter of Confidentiality Received
Date: _____
- Confidential Release Date: _____
- Wireline Log Received
- Geologist Report Received
- UIC Distribution
- ALT I II III Approved by: _____ Date: _____



1060073

Operator Name: _____ Lease Name: _____ Well #: _____

Sec. _____ Twp. _____ S. R. _____ East West County: _____

INSTRUCTIONS: Show important tops and base of formations penetrated. Detail all cores. Report all final copies of drill stems tests giving interval tested, time tool open and closed, flowing and shut-in pressures, whether shut-in pressure reached static level, hydrostatic pressures, bottom hole temperature, fluid recovery, and flow rates if gas to surface test, along with final chart(s). Attach extra sheet if more space is needed. Attach complete copy of all Electric Wire-line Logs surveyed. Attach final geological well site report.

Drill Stem Tests Taken <input type="checkbox"/> Yes <input type="checkbox"/> No <i>(Attach Additional Sheets)</i> Samples Sent to Geological Survey <input type="checkbox"/> Yes <input type="checkbox"/> No Cores Taken <input type="checkbox"/> Yes <input type="checkbox"/> No Electric Log Run <input type="checkbox"/> Yes <input type="checkbox"/> No Electric Log Submitted Electronically <input type="checkbox"/> Yes <input type="checkbox"/> No <i>(If no, Submit Copy)</i> List All E. Logs Run:	<input type="checkbox"/> Log Formation (Top), Depth and Datum <input type="checkbox"/> Sample Name Top Datum
-----------------------------------------------------------------------------------------------------------------------------------------------------------------------------------------------------------------------------------------------------------------------------------------------------------------------------------------------------------------------------------------------------------------------------------------------------------------------------------------------------------------------------------------------	---------------------------------------------------------------------------------------------------------------------

CASING RECORD <input type="checkbox"/> New <input type="checkbox"/> Used							
Report all strings set-conductor, surface, intermediate, production, etc.							
Purpose of String	Size Hole Drilled	Size Casing Set (In O.D.)	Weight Lbs. / Ft.	Setting Depth	Type of Cement	# Sacks Used	Type and Percent Additives

ADDITIONAL CEMENTING / SQUEEZE RECORD				
Purpose:	Depth Top Bottom	Type of Cement	# Sacks Used	Type and Percent Additives
_____ Perforate _____ Protect Casing _____ Plug Back TD _____ Plug Off Zone				

Shots Per Foot	PERFORATION RECORD - Bridge Plugs Set/Type Specify Footage of Each Interval Perforated	Acid, Fracture, Shot, Cement Squeeze Record <i>(Amount and Kind of Material Used)</i>	Depth

TUBING RECORD: Size: _____ Set At: _____ Packer At: _____ Liner Run: Yes No

Date of First, Resumed Production, SWD or ENHR. _____ Producing Method: Flowing Pumping Gas Lift Other (Explain) _____

Estimated Production Per 24 Hours	Oil Bbls.	Gas Mcf	Water Bbls.	Gas-Oil Ratio	Gravity
-----------------------------------	-----------	---------	-------------	---------------	---------

DISPOSITION OF GAS: <input type="checkbox"/> Vented <input type="checkbox"/> Sold <input type="checkbox"/> Used on Lease <i>(If vented, Submit ACO-18.)</i>	METHOD OF COMPLETION: <input type="checkbox"/> Open Hole <input type="checkbox"/> Perf. <input type="checkbox"/> Dually Comp. <input type="checkbox"/> Commingled <i>(Submit ACO-5)</i> <i>(Submit ACO-4)</i> <input type="checkbox"/> Other (Specify) _____	PRODUCTION INTERVAL: _____ _____
-------------------------------------------------------------------------------------------------------------------------------------------------------------------	-----------------------------------------------------------------------------------------------------------------------------------------------------------------------------------------------------------------------------------------------------------------------	----------------------------------------

Form	ACO1 - Well Completion
Operator	Shelby Resources LLC
Well Name	McCune 1-8
Doc ID	1060073

All Electric Logs Run

Dual Induction
Compensated Neutron Density
Micro
Sonic
Dual Receiver Cement Bond



Shelby Resources L.L.C.

McCune #1-8

NE-SW-NW-SW
1600' FSL & 350' FWL
Sec.8, T25s & R12w
Stafford County, Kasas

API # **15-185-23670-0000**

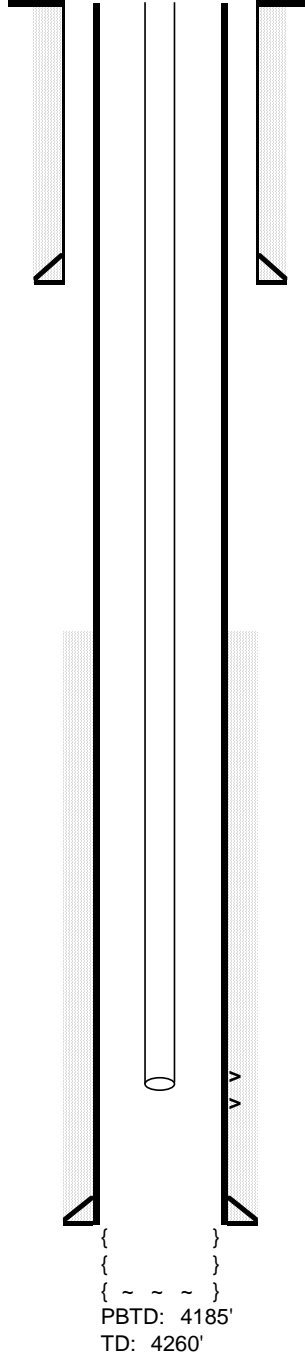
Spud Date: 2/28/2011
Completed: 4/6/2011
Field: Bunyan NE

Field:

GL: 1901'
KB: 1912'

Surface Casing :
8-5/8" 23# set @ 759.67'
Cemented with 425 sx
60/40 Poz

Production Casing:
5-1/2", 15.5# set @ 4223'
Cemented with 50 sx Scavenger
150 sx AA2 cement



TOC : Surface

Tubing:
129 joints 2.3/8"

Rods:
167 x 3/4"

Pump:
2" x 1.5" x 14' RWT

TOC:2840' CBL

L-KC Perfs:

"K" 3799-3808' 3/29/11

"L" 3833-46' 3/29/11

1000 15% NE/25 balls, 4 BPM @ 900-500#



Shelby Resources L.L.C.

McCune # 1-8 /Casing Report

API#15-185-23670-0000

NE-SW-NW-SW

1600' FSL & 350' FWL

Sec. 8, T25s-R12w

Stafford County, Kansas

GL: 1901'

KB: 1912'

3/03/2010

Surface Casing

Spud at 2:15 p.m. on 3/02/11. Drill 12¼" hole to 7655'. Ran 18 joints of new 8.5/8"-23# casing, tallied 746.67' and set at 759.67' KB. Cemented by Quality Cementing with 425 sx 60/40 Poz 2% gel, 3% CC. cement did circulate. Plug down at 9:45 a.m. welded straps on the bottom 3 joints, collars on the next 2 joints and welded collars on the top 5 joints.

3/13/2011

Production Casing

On location @ 10:00 a.m. RIH with drill pipe and condition the hole. Laying down drill pipe and collars, Begin running 101 joints 5 ½" (15.5#) casing. Shoe joint was 20.98'. Insert @ 4204.23'. Marker joint was 7 joints off bottom and measured 21.02'. Set casing @ 4225.23' KB. Landed casing 36.77' off RTD 4262' and LTD, 4264'. Ran a basket on top of #1 and centralizers on #2, 4, #6, #8 and #10. Landed casing @ 11:20 a.m. (3/13/11) Circulate hole for 90 minutes to lower viscosity in mud. RU Basic Services, plug RH with 30 sx. and MH with 20 sx. Mix and pump 50 sx 60/40 Poz-Mix as scavenger flush, followed by 200 sx AA-2 cement down casing. Had good circulation throughout the job. Plug down @ 2:45 p.m. and held 1500#. Release pressure and float held. Release Sterling Rig #2 @ 4:45 p.m.

Company	Shelby Resources, LLC	Lease Name	McCune	
Address	445 Union Blvd. Ste. 208	Lease #	1-8	
CSZ	Lakewood, CO 80228	Legal Desc	NE-SW-NW-SW	Job Ticket 2143
Attn.	Charlie Sturdavant	Section	8	Range 12W
		Township	25S	
		County	Stafford	State KS
		Drilling Cont	Sterling Drilling Co. Rig #2	

Comments **Field: Bunyan Northeast**
Legal Description Feet; 1600' FSL & 350' FWL

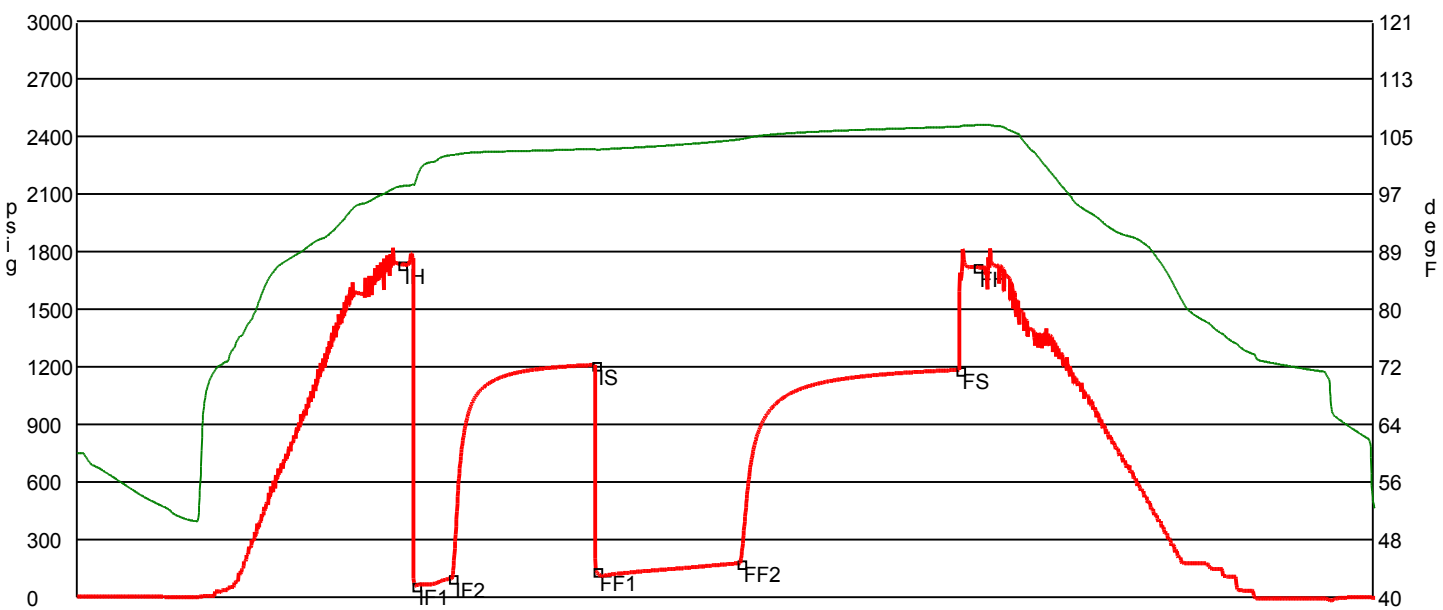
GENERAL INFORMATION

Test # 1	Test Date	3/7/2011	Chokes	3/4	Hole Size	7 7/8
Tester	Tim Venters		Top Recorder #	W1119		
Test Type	Conventional Bottom Hole		Mid Recorder #	W1022		
	Successful Test		Bott Recorder #	13310		
# of Packers	2.0	Packer Size	6 3/4	Mileage	48	Approved By
Mud Type	Gel Chem			Standby Time	0	
Mud Weight	9.1	Viscosity	63.0	Extra Equipmnt	Jars & Safety joint	
Filtrate	8.0	Chlorides	5100	Time on Site	7:30 AM	
				Tool Picked Up	9:40 AM	
				Tool Layed Dwn	5:45 PM	
Drill Collar Len	217.0			Elevation	1901.00	Kelley Bushings 1912.00
Wght Pipe Len	0					
Formation	Lansing		Start Date/Time	3/7/2011 8:55 AM		
Interval Top	3620.0	Bottom	3700.0	End Date/Time	3/7/2011 5:52 PM	
Anchor Len Below	80.0	Between	0			
Total Depth	3700.0					
Blow Type	Strong blow throughout the initial flow period, building, reaching the bottom of the bucket in 1 1/2 minutes. Fairly weak 1 inch blow at the start of the final flow period, building, reaching the bottom of the bucket in 3 1/2 minutes. Weak surface blow back at the start of the final shut-in period, building to 1 inch . Times: 15, 60, 60, 90.					

RECOVERY

Feet	Description	Gas	Oil	Water	Mud
1520	Gas in Pipe	100% 1520ft	0% 0ft	0% 0ft	0% 0ft
110	Gassy, very slight oil cut mud	1% 1.1ft	2% 2.2ft	0% 0ft	97% 106.7ft
65	Gassy, very slight oil, slight water cut mud	2% 1.3ft	2% 1.3ft	13% 8.4ft	83% 54ft
60	Gassy, very heavy water cut mud with a slight trace of oil	2% 1.2ft	trace	48% 28.8ft	50% 30ft
125	Slight mud cut water with a very slight trace of oil	0% 0ft	trace	78% 97.5ft	22% 27.5ft

DST Fluids **89000**



	Date	Time	Pressure	Temp	
IH	3/7/2011 11:08:40 AM	2.227778	1735.253	97.853	Initial Hydro-static
IF1	3/7/2011 11:14:20 AM	2.322222	62.89	98.319	Initial Flow (1)
IF2	3/7/2011 11:29:30 AM	2.575	100.118	102.213	Initial Flow (2)
IS	3/7/2011 12:29:00 PM	3.566667	1211.652	103.088	Initial Shut-In
FF1	3/7/2011 12:29:30 PM	3.575	137.523	102.973	Final Flow (1)
FF2	3/7/2011 1:29:20 PM	4.572222	179.641	104.447	Final Flow (2)
FS	3/7/2011 3:00:10 PM	6.086111	1185.514	106.216	Final Shut-In
FH	3/7/2011 3:07:30 PM	6.208333	1720.191	106.424	Final Hydro-static

GAS FLOWS

Min Into IFP Min Into FFP Gas Flows Pressure Choke

Company	Shelby Resources, LLC	Lease Name	McCune
Address	445 Union Blvd. Ste. 208	Lease #	1-8
CSZ	Lakewood, CO 80228	Legal Desc	NE-SW-NW-SW
Attn.	Charlie Sturdavant	Section	8
		Township	25S
		County	Stafford
		Drilling Cont	Sterling Drilling Co. Rig #2
Job Ticket		State	KS
Range			12W

Comments **Field: Bunyan Northeast**
Legal Description Feet; 1600' FSL & 350' FWL

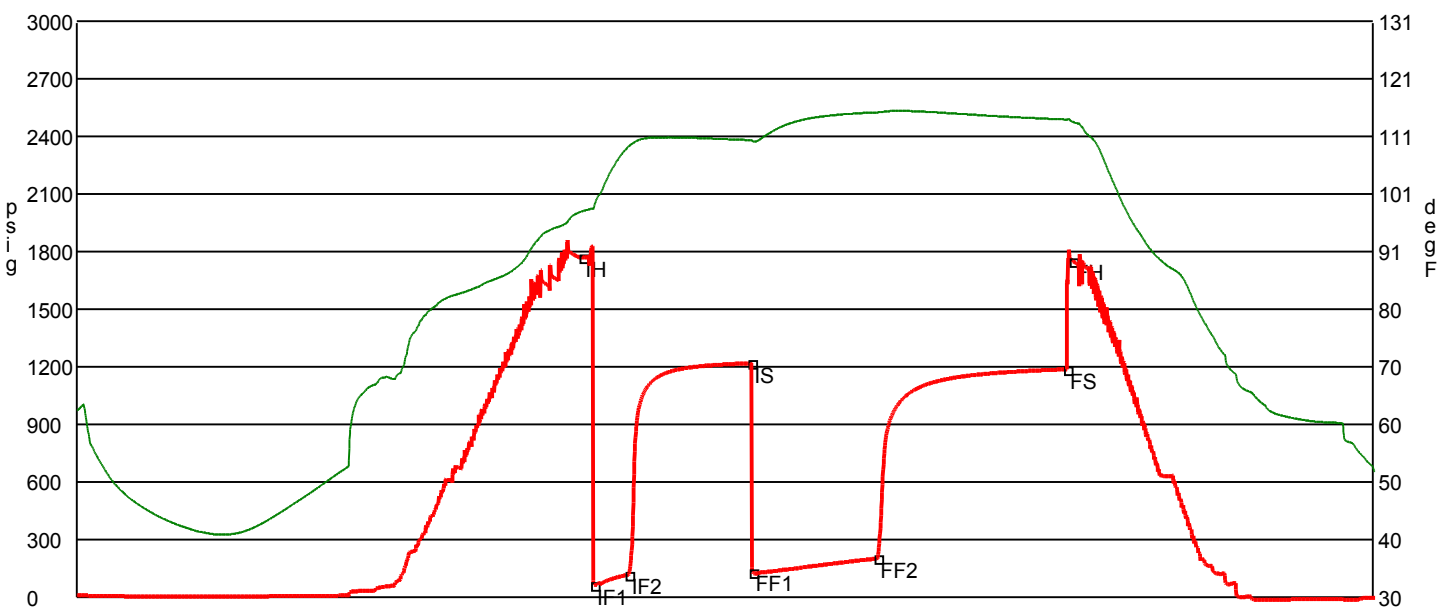
GENERAL INFORMATION

Test # 2	Test Date 3/8/2011	Chokes 3/4	Hole Size 7 7/8
Tester Tim Venters		Top Recorder # W1119	
Test Type Conventional Bottom Hole		Mid Recorder # W1022	
		Bott Recorder # 13310	
# of Packers 2.0	Packer Size 6 3/4	Mileage 48	Approved By
		Standby Time 0	
Mud Type Gel Chem		Extra Equipmnt Jars & Safety joint	
Mud Weight 9.0	Viscosity 59.0	Time on Site 1:45 AM	
Filtrate 8.0	Chlorides 6000	Tool Picked Up 3:40 AM	
		Tool Layed Dwn 12:40 PM	
Drill Collar Len 217.0		Elevation 1901.00	Kelley Bushings 1912.00
Wght Pipe Len 0			
Formation Lansing "H"		Start Date/Time 3/8/2011 2:28 AM	
Interval Top 3718.0	Bottom 3735.0	End Date/Time 3/8/2011 12:44 PM	
Anchor Len Below 17.0	Between 0		
Total Depth 3735.0			
Blow Type Fairly strong 2 inch blow at the start of the initial flow period, building, reaching the bottom of the bucket in 3 minutes. Weak surface blow back at the start of the intial shut-in period, building to 2 1/2 inches. Strong 4 inch blow at the start of the final flow period, building, reaching the bottom of the bucket in 6 minutes. Weak surface blow back at the start of the final shut-in period, building to 1 inch. Times: 15, 60, 60, 90. Oil Gravity: 28.			

RECOVERY

Feet	Description	Gas	Oil	Water	Mud
875	Gas in Pipe	100% 875ft	0% 0ft	0% 0ft	0% 0ft
1	Clean oil	0% 0ft	100% 1ft	0% 0ft	0% 0ft
20	Very slight water, heavy oil cut mud	0% 0ft	40% 8ft	3% 0.6ft	57% 11.4ft
65	Gassy, very slight water, oil cut mud	2% 1.3ft	26% 16.9ft	2% 1.3ft	70% 45.5ft
130	Slight mud cut water with a trace of oil	0% 0ft	trace	88% 114.4ft	12% 15.6ft
185	Water	0% 0ft	0% 0ft	100% 185ft	0% 0ft

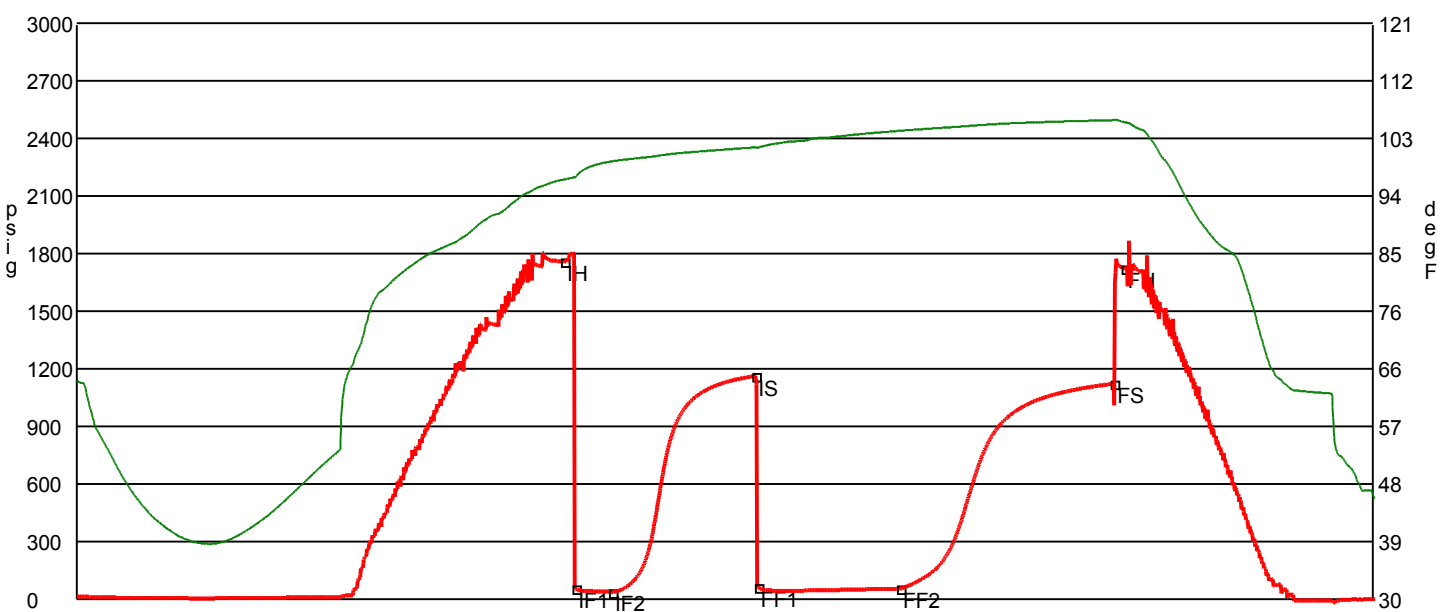
DST Fluids **157000**



	Date	Time	Pressure	Temp	
IH	3/8/2011 6:27:30 AM	3.991667	1772.452	97.752	Initial Hydro-static
IF1	3/8/2011 6:33:00 AM	4.083333	64.622	98.474	Initial Flow (1)
IF2	3/8/2011 6:49:20 AM	4.355556	119.571	109.093	Initial Flow (2)
IS	3/8/2011 7:47:50 AM	5.330556	1220.381	110.19	Initial Shut-In
FF1	3/8/2011 7:48:30 AM	5.341667	132.888	110.002	Final Flow (1)
FF2	3/8/2011 8:47:50 AM	6.330556	203.734	115.058	Final Flow (2)
FS	3/8/2011 10:17:50 AM	7.830556	1188.594	113.809	Final Shut-In
FH	3/8/2011 10:20:40 AM	7.877778	1752.376	113.395	Final Hydro-static

GAS FLOWS

Min Into IFP Min Into FFP Gas Flows Pressure Choke



	Date	Time	Pressure	Temp	
IH	3/8/2011 5:14:10 AM	3.369444	1761.456	96.351	Initial Hydro-static
IF1	3/8/2011 5:19:00 AM	3.45	56.727	96.721	Initial Flow (1)
IF2	3/8/2011 5:34:20 AM	3.705556	39.753	99.227	Initial Flow (2)
IS	3/8/2011 6:34:10 AM	4.702778	1163.815	101.438	Initial Shut-In
FF1	3/8/2011 6:35:10 AM	4.719444	63.96	101.369	Final Flow (1)
FF2	3/8/2011 7:34:30 AM	5.708333	56.825	104.052	Final Flow (2)
FS	3/8/2011 9:03:50 AM	7.197222	1123.847	105.736	Final Shut-In
FH	3/8/2011 9:08:10 AM	7.269444	1724.27	105.403	Final Hydro-static

GAS FLOWS

Min Into IFP Min Into FFP Gas Flows Pressure Choke

Company	Shelby Resources, LLC	Lease Name	McCune	
Address	445 Union Blvd. Ste. 208	Lease #	1-8	
CSZ	Lakewood, CO 80228	Legal Desc	NE-SW-NW-SW	Job Ticket 2143
Attn.	Charlie Sturdavant	Section	8	Range 12W
		Township	25S	
		County	Stafford	State KS
		Drilling Cont	Sterling Drilling Co. Rig #2	

Comments **Field: Bunyan Northeast**
Legal Description Feet; 1600' FSL & 350' FWL

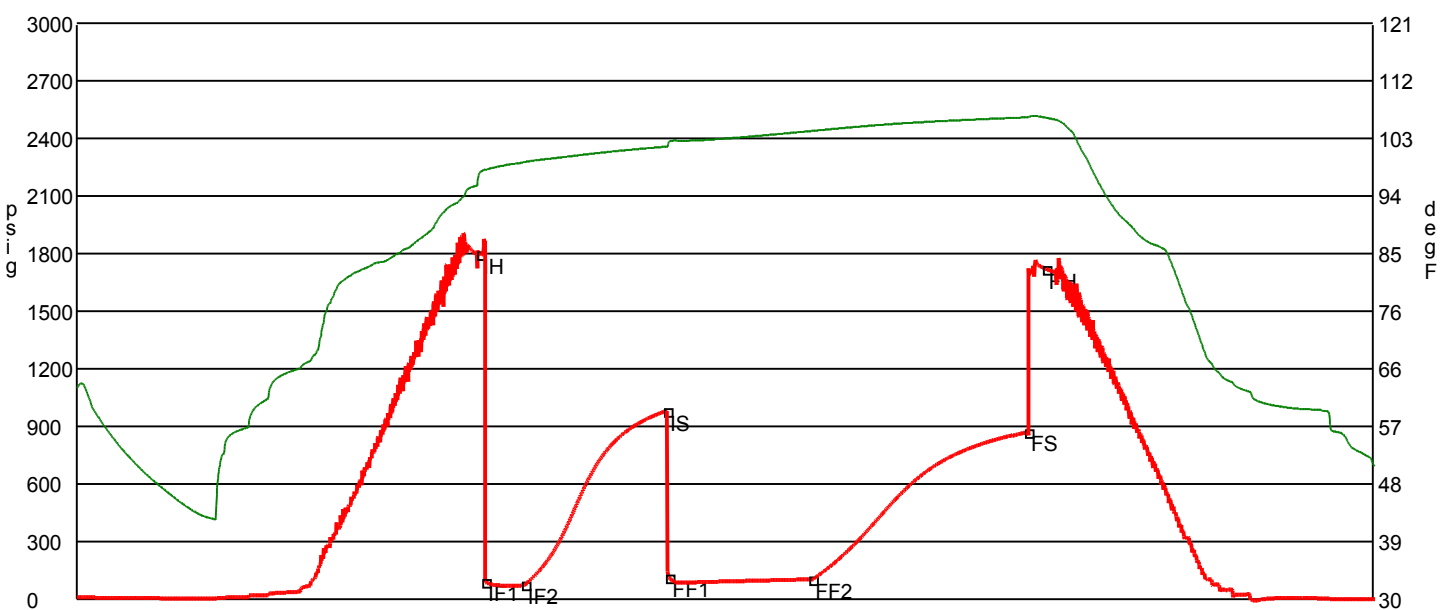
GENERAL INFORMATION

Test # 4	Test Date 3/10/2011	Chokes 3/4	Hole Size 7 7/8
Tester Tim Venters		Top Recorder # W1119	
Test Type Conventional Bottom Hole		Mid Recorder # W1022	
		Bott Recorder # 13310	
# of Packers 2.0	Packer Size 6 3/4	Mileage 48	Approved By
		Standby Time 0	
Mud Type Gel Chem		Extra Equipmnt Jars & Safety joint	
Mud Weight 9.0	Viscosity 51.0	Time on Site 6:35 PM	
Filtrate 6.4	Chlorides 5500	Tool Picked Up 8:35 PM	
		Tool Layed Dwn 4:30 AM	
Drill Collar Len 217.0		Elevation 1901.00	Kelley Bushings 1912.00
Wght Pipe Len 0			
Formation Lansing "K"		Start Date/Time 3/9/2011 7:34 PM	
Interval Top 3780.0	Bottom 3808.0	End Date/Time 3/10/2011 4:31 AM	
Anchor Len Below 28.0	Between 0		
Total Depth 3808.0			
Blow Type Weak surface blow at the start of the intial flow period, building to 8 1/2 inch es. Fairly weak 1 inch blow at the start of the final flow period, building, reaching the bottom of the bucket in 11 minutes. Weak surface blow back at the start of the final shut-in period, but didn't last the entire period. Times: 15, 60, 90.			

RECOVERY

Feet	Description	Gas	Oil	Water	Mud
450	Gas in Pipe	100% 450ft	0% 0ft	0% 0ft	0% 0ft
125	Very slight oil cut mud	0% 0ft	1% 1.2ft	0% 0ft	99% 123.8ft
60	Gassy, oil and water cut mud	10% 6ft	22% 13.2ft	15% 9ft	53% 31.8ft

DST Fluids **32000**



	Date	Time	Pressure	Temp	
IH	3/9/2011 10:20:20 PM	2.772222	1798.05	97.484	Initial Hydro-static
IF1	3/9/2011 10:22:30 PM	2.808333	92.553	97.855	Initial Flow (1)
IF2	3/9/2011 10:38:50 PM	3.080556	76.673	99.125	Initial Flow (2)
IS	3/9/2011 11:37:50 PM	4.063889	980.179	101.553	Initial Shut-In
FF1	3/9/2011 11:38:50 PM	4.080556	115.56	102.317	Final Flow (1)
FF2	3/10/2011 12:38:20 AM	5.072222	105.15	104.03	Final Flow (2)
FS	3/10/2011 2:07:50 AM	6.563889	873.219	106.174	Final Shut-In
FH	3/10/2011 2:15:20 AM	6.688889	1721.277	106.118	Final Hydro-static

GAS FLOWS

Min Into IFP Min Into FFP Gas Flows Pressure Choke

Company	Shelby Resources, LLC	Lease Name	McCune	
Address	445 Union Blvd. Ste. 208	Lease #	1-8	
CSZ	Lakewood, CO 80228	Legal Desc	NE-SW-NW-SW	Job Ticket 2143
Attn.	Charlie Sturdavant	Section	8	Range 12W
		Township	25S	
		County	Stafford	State KS
		Drilling Cont	Sterling Drilling Co. Rig #2	
Comments	Field: Bunyan Northeast			
	Legal Description Feet; 1600' FSL & 350' FWL			

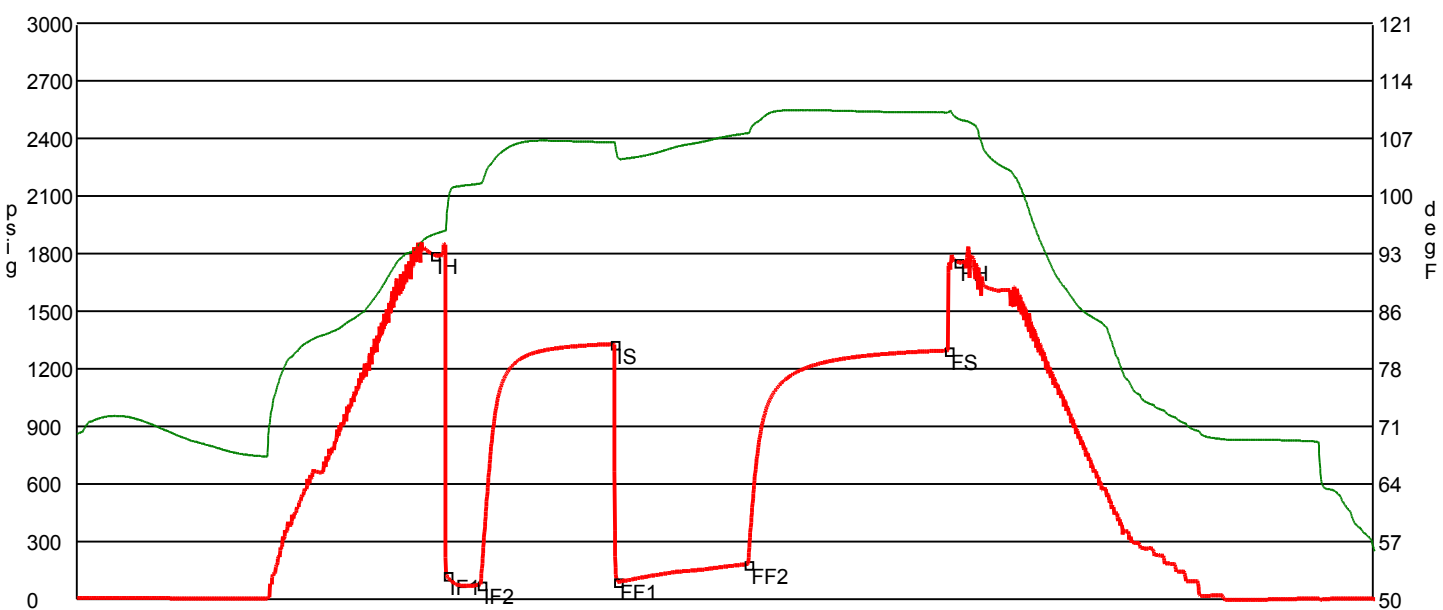
GENERAL INFORMATION

Test # 5	Test Date 3/11/2011	Chokes 3/4	Hole Size 7 7/8
Tester Tim Venters		Top Recorder # W1119	
Test Type Conventional Bottom Hole		Mid Recorder # W1022	
		Bott Recorder # 13310	
# of Packers 2.0	Packer Size 6 3/4	Mileage 48	Approved By
		Standby Time 0	
Mud Type Gel Chem		Extra Equipmnt Jars & Safety joint	
Mud Weight 9.1	Viscosity 57.0	Time on Site 2:45 PM	
Filtrate 6.4	Chlorides 7000	Tool Picked Up 5:15 PM	
		Tool Layed Dwn 1:45 AM	
Drill Collar Len 217.0		Elevation 1901.00	Kelley Bushings 1912.00
Wght Pipe Len 0			
Formation Bunyan Northeast		Start Date/Time 3/10/2011 4:09 PM	
Interval Top 3822.0	Bottom 3850.0	End Date/Time 3/11/2011 1:50 AM	
Anchor Len Below 28.0	Between 0		
Total Depth 3850.0			
Blow Type	Very strong blow throughout the initial flow period, building, reaching BOB in 30 seconds. Gas to surface 10 minutes. Weak surface blow back at the start of the initial shut-in period, building to 5 1/2 inches. Very strong blow at the start of the final flow period, hitting BOB instantaneously. Gas to surface instantaneously. Weak surface blow back after we bled line off (33 min.) of the final shut-in period, building, reaching BOB 6 minutes. Times; 15, 60, 60, 90. Oil Gravity: 35.		

RECOVERY

Feet	Description	Gas	Oil	Water	Mud
3200	Gas in Pipe	100% 3200ft	0% 0ft	0% 0ft	0% 0ft
220	Clean oil	0% 0ft	100% 220ft	0% 0ft	0% 0ft
320	Very gassy mud cut oil	18% 57.6ft	57% 182.4ft	0% 0ft	25% 80ft
60	Gassy, water, very heavy oil cut mud	10% 6ft	35% 21ft	18% 10.8ft	37% 22.2ft

DST Fluids **35000**



	Date	Time	Pressure	Temp	
IH	3/10/2011 6:48:10 PM	2.652778	1795.354	95.026	Initial Hydro-static
IF1	3/10/2011 6:53:50 PM	2.747222	128.155	96.887	Initial Flow (1)
IF2	3/10/2011 7:09:00 PM	3	79.245	101.303	Initial Flow (2)
IS	3/10/2011 8:08:50 PM	3.997222	1329.964	106.369	Initial Shut-In
FF1	3/10/2011 8:10:20 PM	4.022222	96.046	104.719	Final Flow (1)
FF2	3/10/2011 9:09:00 PM	5	184.557	107.497	Final Flow (2)
FS	3/10/2011 10:38:50 PM	6.497222	1297.509	110.035	Final Shut-In
FH	3/10/2011 10:43:00 PM	6.566667	1759.496	109.302	Final Hydro-static

GAS FLOWS

Min Into IFP	Min Into FFP	Gas Flows	Pressure	Choke
15	0	28.00 mcf	20.00 h2o	0.50 in
0	10	33.20 mcf	28.00 h2o	0.50 in
0	20	31.00 mcf	24.50 h2o	0.50 in
0	30	27.65 mcf	19.50 h2o	0.50 in
0	40	27.65 mcf	19.50 h2o	0.50 in
0	50	26.95 mcf	18.50 h2o	0.50 in
0	60	25.80 mcf	17.00 h2o	0.50 in

Scale 1:240 Imperial

Well Name: # 1-8 McCune
Surface Location: 1600' FSL, 350' FWL Sec 8 T25S R12W
Bottom Location:
API: 15-185-23670-0000
License Number:
Spud Date: 3/2/2011 Time: 2:15 PM
Region: Stafford County
Drilling Completed: 3/12/2011 Time: 2:46 PM
Surface Coordinates: 444397 & 1950390
Bottom Hole Coordinates:
Ground Elevation: 1901.00ft
K.B. Elevation: 1912.00ft
Logged Interval: 2800.00ft To: 4260.00ft
Total Depth: 4260.00ft
Formation: Lansing
Drilling Fluid Type: Chemical/Fresh Water Gel

OPERATOR

Company: Shelby Resources, LLC
Address: 445 Union Blvd., Suite 208
Lakewood, CO 80228
Contact Geologist: Janine Sturdavant
Contact Phone Nbr: 303-907-2209
Well Name: # 1-8 McCune
Location: 1600' FSL, 350' FWL Sec 8 T25S R12W API: 15-185-23670-0000
Pool: Bunyan NE Field: Bunyan NE
State: Kansas Country: USA

SURFACE CO-ORDINATES

Well Type: Vertical
Longitude: Latitude:
N/S Co-ord: 444397
E/W Co-ord: 1950390

LOGGED BY



Charlie Sturdavant Consulting

Company: Charlie Sturdavant Consulting
Address: 920 12th Street
Golden, CO 80401
Phone Nbr: 303-907-2295
Logged By: Geologist Name: Charlie Sturdavant

CONTRACTOR

Contractor: Sterling Drilling Company
Rig #: 2
Rig Type: mud rotary
Spud Date: 3/2/2011 Time: 2:15 PM
TD Date: 3/12/2011 Time: 2:46 PM
Rig Release: Time:

ELEVATIONS

K.B. Elevation: 1912.00ft Ground Elevation: 1901.00ft
K.B. to Ground: 11.00ft

Well Comparison Sheet

	DRILLING WELL				COMPARISON WELL			
	Shelby Resources LLC. # 1-8 McCune				Pyramid Oil McCune #1			
	1600' FSL & 350' FWL				NW-SW-SW			

	Sec. 8 T25S R12W				Sec. 8 T25S R12W			
	1912	KB			1905	KB	Structural	
	Prognosis	Sub-Sea	Log	Sub-Sea	Log	Sub-Sea	Relationship	
Formation							Sample	Log
Anhydrite	735	1177	734	1178	728	1177	0	1
Howard	2988	-1076	2989	-1077	2984	-1079	3	2
Topeka	3076	-1164	3078	-1166	3073	-1168	4	2
Heebner	3409	-1497	3412	-1500	3407	-1502	5	2
Toronto	3436	-1524	3433	-1521	3434	-1529	5	8
Douglas	3454	-1542	3452	-1540	3450	-1545	3	5
Brown Lime	3562	-1650	3564	-1652	3561	-1656	6	4
Lansing	3584	-1672	3587	-1675	3584	-1679	7	4
Lansing G	3696	-1784	3696	-1784	3694	-1789	5	5
Lansing H	3727	-1815	3727	-1815	3726	-1821	6	6
Base KC	3871	-1959	3870	-1958	3869	-1964	5	6
Viola	3994	-2082	3991	-2079	3992	-2087	5	8
Simpson Shale	4092	-2180	4092	-2180	4094	-2189	9	9
Arbuckle	4163	-2251	4165	-2253	4164	-2259	8	6
Total Depth	4260	-2348	4264	-2352	4200	-2295		

Daily Drilling Report

Company:	Shelby Resources LLC	Well:	#1-8McCune
	445 Union St., Suite 208	Location:	1600' FSL & 350' FWL
	Lakewood, CO 80228		Sec.8 T25S R12W
			Stafford County, KS
Jim Waechter	Cell: 303-478-3388		
Gary Krieger	Cell: 303-887-5085		
Wellsite Geologist: Charlie Sturdavant		Elevation:	1912' KB 1901' GL
	Cell: (303) 907-2295	Field:	Bynum NE
	Office: (303) 384-9481	API No.:	15-185-23670-0000
		Surface Casing:	8 5/8" set @ 765' KB
Drilling Contractor: Sterlling Drilling Rig #2 620-388-5651 Tool Pusher: Shane Downs cell: 620-388-3474			
DATE	7:00 AM DEPTH		
3/2/2011	0 ft.	Preparing to spud.	
3/3/2011	765 ft.	Running surface casing to 765'.	
3/4/2011	1511 ft.	Drilling ahead.	
3/5/2011	2550 ft.	Drilling ahead, no problems.	
3/6/2011	3272 ft.	Drilling ahead and running high.	

3/7/2011	3700 ft.	Tripping pipe for DST #1 in the Lansing.
3/8/2011	3735 ft.	Conducting DST #2 in Lansing H zone.
3/9/2011	3770ft.	Conducting DST #3 in Lansing I and J zones.
3/10/2011	3808 ft.	Tripping into hole after completing DST # 4.
3/11/2011	3850 ft.	Circulating to dissipate trip gas, before drilling.
3/12/2011	4170 ft.	Circulating for samples @ top of Arbuckle.
3/13/2011	4260 ft.	RTD 4260'. LTD 4264'. Logging operations completed @ 0130 hrs Preparing to run production casing. Geologist off location @ 0230 hrs.

NOTES

Five drill stem tests were conducted on this well. The Lansing L zone had the most favorable test. Sample shows were noted in both the Arbuckle and Viola formations, but were not drill stem tested. Logs were run and evaluated, and it was determined that 5-1/2 inch production casing should be run to the Arbuckle, so that several formations can be further tested through perforations.

The dry samples were saved and will be available for review at the Kansas Geological Survey well sample library, located in Wichita, KS.

Respectfully submitted,
Charlie Sturdavant

DST # 1

RICKETTS TESTING

(620) 326-5830

Page 1

Company	Shelby Resources, LLC	Lease Name	McCune		
Address	445 Union Blvd. Ste. 208	Lease #	1-8		
CSZ	Lakewood, CO 80228	Legal Desc	NE-SW-NW-SW	Job Ticket	2143
Attn.	Charlie Sturdavant	Section	8	Range	12W
		Township	25S		
		County	Stafford	State	KS
		Drilling Cont	Sterling Drilling Co. Rig #2		

Comments **Field: Bunyan Northeast**
Legal Description Feet; 1600' FSL & 350' FWL

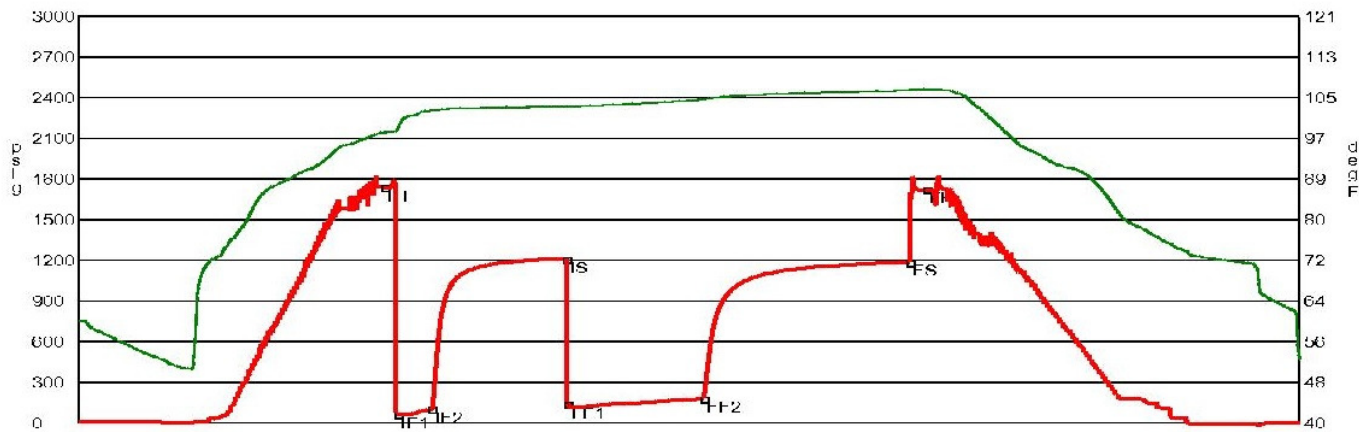
GENERAL INFORMATION

Test # 1	Test Date	3/7/2011	Chokes	3/4	Hole Size	7 7/8
Tester	Tim Venters		Top Recorder #	W1119		
Test Type	Conventional Bottom Hole		Mid Recorder #	W1022		
	Successful Test		Bott Recorder #	13310		
# of Packers	2.0	Packer Size	6 3/4	Mileage	48	Approved By
Mud Type	Gel Chem			Standby Time	0	
Mud Weight	9.1	Viscosity	63.0	Extra Equipmnt	Jars & Safety joint	
Filtrate	8.0	Chlorides	5100	Time on Site	7:30 AM	
Drill Collar Len	217.0			Tool Picked Up	9:40 AM	
Wght Pipe Len	0			Tool Layed Dwn	5:45 PM	
Formation	Lansing		Elevation	1901.00	Kelley Bushings	1912.00
Interval Top	3620.0	Bottom	3700.0	Start Date/Time	3/7/2011 8:55 AM	
Anchor Len Below	80.0	Between	0	End Date/Time	3/7/2011 5:52 PM	
Total Depth	3700.0					
Blow Type	Strong blow throughout the initial flow period, building, reaching the bottom of the bucket in 1 1/2 minutes. Fairly weak 1 inch blow at the start of the final flow period, building, reaching the bottom of the bucket in 3 1/2 minutes. Weak surface blow back at the start of the final shut-in period, building to 1 inch . Times: 15, 60, 60, 90.					

RECOVERY

Feet	Description	Gas	Oil	Water	Mud
1520	Gas in Pipe	100% 1520ft	0% 0ft	0% 0ft	0% 0ft
110	Gassy, very slight oil cut mud	1% 1.1ft	2% 2.2ft	0% 0ft	97% 106.7ft
65	Gassy, very slight oil, slight water cut mud	2% 1.3ft	2% 1.3ft	13% 8.4ft	83% 54ft
60	Gassy, very heavy water cut mud with a slight trace of oil	2% 1.2ft	trace	48% 28.8ft	50% 30ft
125	Slight mud cut water with a very slight trace of oil	0% 0ft	trace	78% 97.5ft	22% 27.5ft

DST Fluids **89000**



	Date	Time	Pressure	Temp	
IH	3/7/2011 11:08:40 AM	2.227778	1735.253	97.853	Initial Hydro-static
IF1	3/7/2011 11:14:20 AM	2.322222	62.89	98.319	Initial Flow (1)
IF2	3/7/2011 11:29:30 AM	2.575	100.118	102.213	Initial Flow (2)
IS	3/7/2011 12:29:00 PM	3.566667	1211.652	103.088	Initial Shut-In
FF1	3/7/2011 12:29:30 PM	3.575	137.523	102.973	Final Flow (1)
FF2	3/7/2011 1:29:20 PM	4.572222	179.641	104.447	Final Flow (2)
FS	3/7/2011 3:00:10 PM	6.086111	1185.514	106.216	Final Shut-In
FH	3/7/2011 3:07:30 PM	6.208333	1720.191	106.424	Final Hydro-static

GAS FLOWS

Min Into IFP
 Min Into FFP
 Gas Flows
 Pressure
 Choke

DST # 2

RICKETTS TESTING

(620) 326-5830

Page 1

Company	Shelby Resources, LLC	Lease Name	McCune
Address	445 Union Blvd. Ste. 208	Lease #	1-8
CSZ	Lakewood, CO 80228	Legal Desc	NE-SW-NW-SW
Attn.	Charlie Sturdavant	Section	8
		Township	25S
		County	Stafford
		Drilling Cont	Sterling Drilling Co. Rig #2
State		Job Ticket	2143
		Range	12W
Comments	Field: Bunyan Northeast		
	Legal Description Feet; 1600' FSL & 350' FWL		

GENERAL INFORMATION

Test # 2	Test Date	3/8/2011	Chokes	3/4	Hole Size	7 7/8
Tester	Tim Venters		Top Recorder #	W1119		
Test Type	Conventional Bottom Hole		Mid Recorder #	W1022		
	Successful Test		Bott Recorder #	13310		
# of Packers	2.0	Packer Size	6 3/4	Mileage	48	Approved By
Mud Type	Gel Chem			Standby Time	0	
Mud Weight	9.0	Viscosity	59.0	Extra Equipmnt	Jars & Safety joint	
Filtrate	8.0	Chlorides	6000	Time on Site	1:45 AM	
				Tool Picked Up	3:40 AM	
Drill Collar Len	217.0			Tool Layed Dwn	12:40 PM	
Wght Pipe Len	0			Elevation	1901.00	Kelley Bushings 1912.00
Formation	Lansing "H"			Start Date/Time	3/8/2011 2:28 AM	
Interval Top	3718.0	Bottom	3735.0	End Date/Time	3/8/2011 12:44 PM	
Anchor Len Below	17.0	Between	0			
Total Depth	3735.0					
Blow Type	Fairly strong 2 inch blow at the start of the initial flow period, building, reaching the bottom of the bucket in 3 minutes. Weak surface blow back at the start of the initial shut-in period, building to 2 1/2 inches. Strong 4 inch blow at the start of the final flow period, building, reaching the bottom of the bucket in 6 minutes. Weak surface blow back at the start of the final shut-in period, building to 1 inch. Times: 15, 60, 60, 90. Oil Gravity: 28.					

RECOVERY

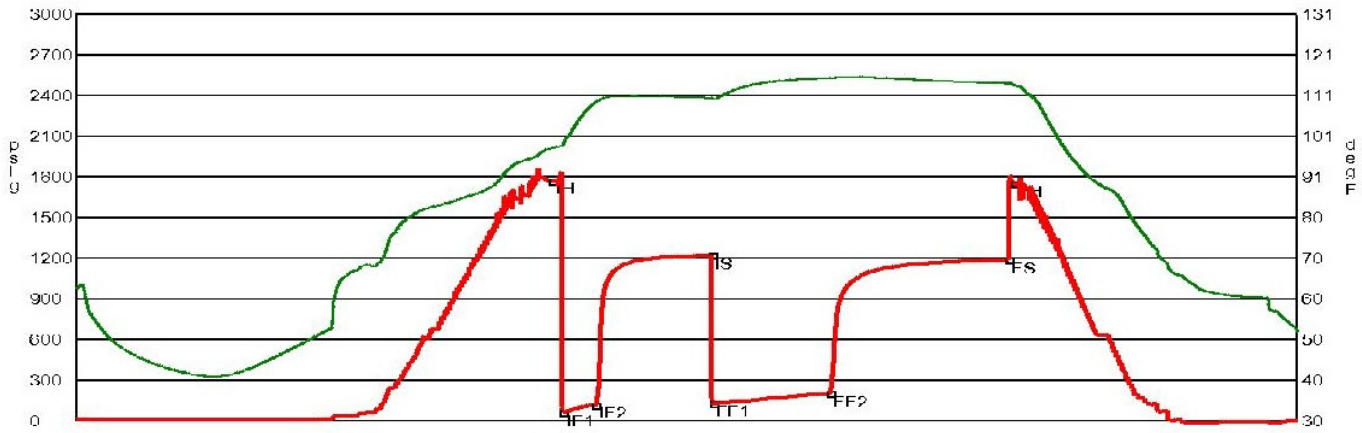
Feet	Description	Gas	Oil	Water	Mud
875	Gas in Pipe	100% 875ft	0% 0ft	0% 0ft	0% 0ft
1	Clean oil	0% 0ft	100% 1ft	0% 0ft	0% 0ft
20	Very slight water, heavy oil cut mud	0% 0ft	40% 8ft	3% 0.6ft	57% 11.4ft
65	Gassy, very slight water, oil cut mud	2% 1.3ft	26% 16.9ft	2% 1.3ft	70% 45.5ft
130	Slight mud cut water with a trace of oil	0% 0ft	trace	88% 114.4ft	12% 15.6ft
185	Water	0% 0ft	0% 0ft	100% 185ft	0% 0ft

DST Fluids 157000

RICKETTS TESTING

(620) 326-5830

Page 2



	Date	Time	Pressure	Temp	
IH	3/8/2011 6:27:30 AM	3.991667	1772.452	97.752	Initial Hydro-static
IF1	3/8/2011 6:33:00 AM	4.083333	64.622	98.474	Initial Flow (1)
IF2	3/8/2011 6:49:20 AM	4.355556	119.571	109.093	Initial Flow (2)
IS	3/8/2011 7:47:50 AM	5.330556	1220.381	110.19	Initial Shut-In
FF1	3/8/2011 7:48:30 AM	5.341667	132.888	110.002	Final Flow (1)
FF2	3/8/2011 8:47:50 AM	6.330556	203.734	115.058	Final Flow (2)
FS	3/8/2011 10:17:50 AM	7.830556	1188.594	113.809	Final Shut-In
FH	3/8/2011 10:20:40 AM	7.877778	1752.376	113.395	Final Hydro-static

GAS FLOWS

Min Into IFP Min Into FFP Gas Flows Pressure Choke

DST # 3

RICKETTS TESTING

(620) 326-5830

Page 1

Company	Shelby Resources, LLC	Lease Name	McCune
Address	445 Union Blvd. Ste. 208	Lease #	1-8
CSZ	Lakewood, CO 80228	Legal Desc	NE-SW-NW-SW
Attn.	Charlie Sturdavant	Section	8
		Township	25S
		County	Stafford
		Drilling Cont	Sterling Drilling Co. Rig #2
Comments	Field: Bunyan Northeast Legal Description Feet; 1600' FSL & 350' FWL		
		Job Ticket	2143
		Range	12W
		State	KS

GENERAL INFORMATION

Test # 3	Test Date	3/9/2011	Chokes	3/4	Hole Size	7 7/8
Tester	Tim Venters		Top Recorder #	W1119		
Test Type	Conventional Bottom Hole		Mid Recorder #	W1022		
	Successful Test		Bott Recorder #	13310		
# of Packers	2.0	Packer Size	6 3/4	Mileage	48	Approved By
Mud Type	Gel Chem			Standby Time	0	
Mud Weight	9.0	Viscosity	51.0	Extra Equipmnt	Jars & Safety joint	
Filtrate	6.4	Chlorides	5500	Time on Site	12:05 AM	
Drill Collar Len	217.0			Tool Picked Up	2:40 AM	
Wght Pipe Len	0			Tool Layed Dwn	10:50 AM	
Formation	Lansing "J"			Elevation	1901.00	Kelley Bushings
Interval Top	3740.0	Bottom	3770.0	Start Date/Time	3/8/2011 1:52 AM	1912.00
Anchor Len Below	30.0	Between	0	End Date/Time	3/8/2011 10:52 AM	
Total Depth	3770.0					
Blow Type	Weak surface blow at the start of the intial flow period, building to 4 inches. Weak 1/4 inch blow at the start of the final flow period, building to 7 inches . Times: 15, 60, 60, 90.					

RECOVERY

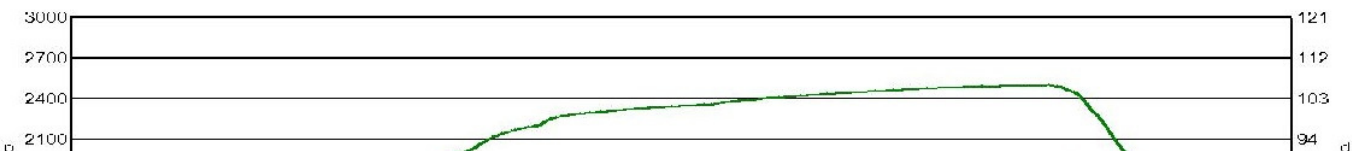
Feet	Description	Gas	Oil	Water	Mud
110	Gas in Pipe	100% 110ft	0% 0ft	0% 0ft	0% 0ft
75	Mud with a slight trace of oil	0% 0ft	trace	0% 0ft	100% 75ft

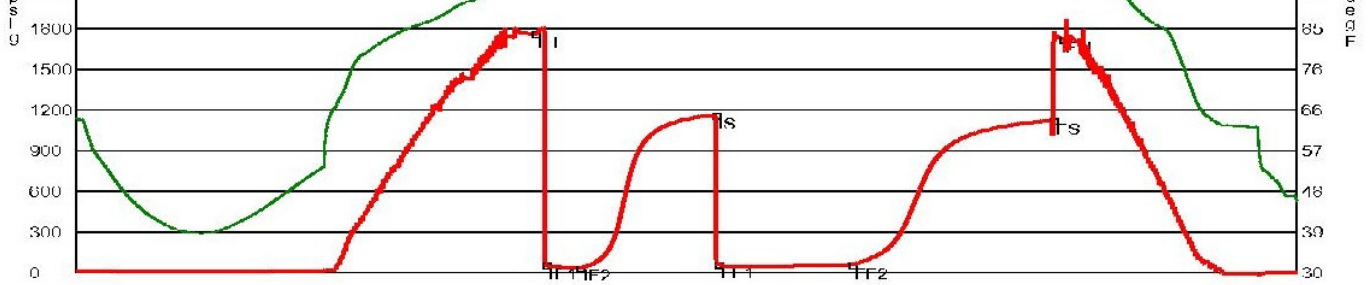
DST Fluids 0

RICKETTS TESTING

(620) 326-5830

Page 2





	Date	Time	Pressure	Temp	
IH	3/8/2011 5:14:10 AM	3.369444	1761.456	96.351	Initial Hydro-static
IF1	3/8/2011 5:19:00 AM	3.45	56.727	96.721	Initial Flow (1)
IF2	3/8/2011 5:34:20 AM	3.705556	39.753	99.227	Initial Flow (2)
IS	3/8/2011 6:34:10 AM	4.702778	1163.815	101.438	Initial Shut-In
FF1	3/8/2011 6:35:10 AM	4.719444	63.96	101.369	Final Flow (1)
FF2	3/8/2011 7:34:30 AM	5.708333	56.825	104.052	Final Flow (2)
FS	3/8/2011 9:03:50 AM	7.197222	1123.847	105.736	Final Shut-In
FH	3/8/2011 9:08:10 AM	7.269444	1724.27	105.403	Final Hydro-static

GAS FLOWS

Min Into IFP Min Into FFP Gas Flows Pressure Choke

DST # 4

RICKETTS TESTING

(620) 326-5830

Page 1

Company	Shelby Resources, LLC	Lease Name	McCune
Address	445 Union Blvd. Ste. 208	Lease #	1-8
CSZ	Lakewood, CO 80228	Legal Desc	NE-SW-NW-SW
Attn.	Charlie Sturdavant	Section	8
		Township	25S
		County	Stafford
		Drilling Cont	Sterling Drilling Co. Rig #2
Job Ticket	2143	State	KS
Range	12W		
Comments	Field: Bunyan Northeast Legal Description Feet; 1600' FSL & 350' FWL		

GENERAL INFORMATION

Test # 4	Test Date	3/10/2011	Chokes	3/4	Hole Size	7 7/8
Tester	Tim Venters		Top Recorder #	W1119		
Test Type	Conventional Bottom Hole		Mid Recorder #	W1022		
	Successful Test		Bott Recorder #	13310		
# of Packers	2.0	Packer Size	6 3/4	Mileage	48	Approved By
Mud Type	Gel Chem			Standby Time	0	
Mud Weight	9.0	Viscosity	51.0	Extra Equipmnt	Jars & Safety joint	
Filtrate	6.4	Chlorides	5500	Time on Site	6:35 PM	
				Tool Picked Up	8:35 PM	
Drill Collar Len	217.0			Tool Layed Dwn	4:30 AM	
Wght Pipe Len	0			Elevation	1901.00	Kelley Bushings 1912.00
Formation	Lansing "K"			Start Date/Time	3/9/2011 7:34 PM	
Interval Top	3780.0	Bottom	3808.0	End Date/Time	3/10/2011 4:31 AM	
Anchor Len Below	28.0	Between	0			
Total Depth	3808.0					
Blow Type	Weak surface blow at the start of the intial flow period, building to 8 1/2 inch es. Fairly weak 1 inch blow at the start of the final flow period, building, reaching the bottom of the bucket in 11 minutes. Weak surface blow back at the start of the final shut-in period, but didn't last the entire period. Times: 15, 60, 60, 90.					

RECOVERY

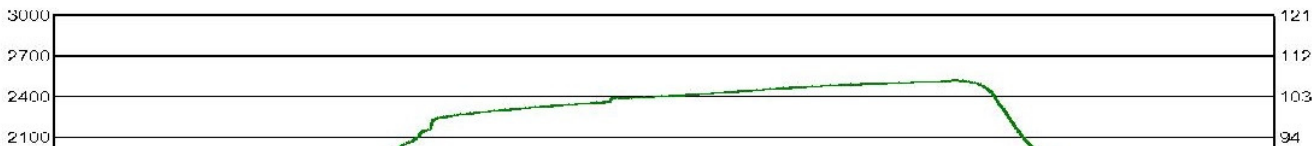
Feet	Description	Gas	Oil	Water	Mud
450	Gas in Pipe	100% 450ft	0% 0ft	0% 0ft	0% 0ft
125	Very slight oil cut mud	0% 0ft	1% 1.2ft	0% 0ft	99% 123.8ft
60	Gassy, oil and water cut mud	10% 6ft	22% 13.2ft	15% 9ft	53% 31.8ft

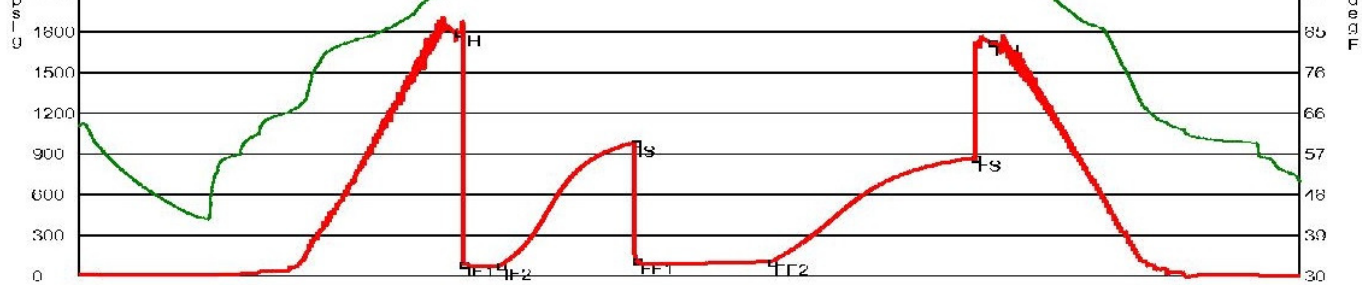
DST Fluids 32000

RICKETTS TESTING

(620) 326-5830

Page 2





	Date	Time	Pressure	Temp	
IH	3/9/2011 10:20:20 PM	2.772222	1798.05	97.484	Initial Hydro-static
IF1	3/9/2011 10:22:30 PM	2.808333	92.553	97.855	Initial Flow (1)
IF2	3/9/2011 10:38:50 PM	3.080556	76.673	99.125	Initial Flow (2)
IS	3/9/2011 11:37:50 PM	4.063889	980.179	101.553	Initial Shut-In
FF1	3/9/2011 11:38:50 PM	4.080556	115.56	102.317	Final Flow (1)
FF2	3/10/2011 12:38:20 AM	5.072222	105.15	104.03	Final Flow (2)
FS	3/10/2011 2:07:50 AM	6.563889	873.219	106.174	Final Shut-In
FH	3/10/2011 2:15:20 AM	6.688889	1721.277	106.118	Final Hydro-static

GAS FLOWS

Min Into IFP Min Into FFP Gas Flows Pressure Choke

DST # 5

RICKETTS TESTING

(620) 326-5830

Page 1

Company	Shelby Resources, LLC	Lease Name	McCune	Job Ticket	2143
Address	445 Union Blvd. Ste. 208	Lease #	1-8	Range	12W
CSZ	Lakewood, CO 80228	Legal Desc	NE-SW-NW-SW	State	KS
Attn.	Charlie Sturdavant	Section	8	Drilling Cont	Sterling Drilling Co. Rig #2
Comments	Field: Bunyan Northeast Legal Description Feet; 1600' FSL & 350' FWL				

GENERAL INFORMATION

Test # 5	Tester	Test Date	3/11/2011	Chokes	3/4	Hole Size	7 7/8
Test Type	Tim Venters			Top Recorder #	W1119		
# of Packers	Conventional Bottom Hole			Mid Recorder #	W1022		
Mud Type	Successful Test			Bott Recorder #	13310		
Mud Weight	9.1	Packer Size	6 3/4	Mileage	48	Approved By	
Filtrate	6.4	Viscosity	57.0	Standby Time	0	Extra Equipmnt	Jars & Safety joint
Drill Collar Len	217.0	Chlorides	7000	Time on Site	2:45 PM	Tool Picked Up	5:15 PM
Wght Pipe Len	0			Tool Layed Dwn	1:45 AM	Elevation	1901.00
Formation	Bunyan Northeast					Kelley Bushings	1912.00
Interval Top	3822.0	Bottom	3850.0	Start Date/Time	3/10/2011 4:09 PM	End Date/Time	3/11/2011 1:50 AM
Anchor Len Below	28.0	Between	0				
Total Depth	3850.0						
Blow Type	Very strong blow throughout the initial flow period, building, reaching BOB in 30 seconds. Gas to surface 10 minutes. Weak surface blow back at the start of the initial shut-in period, building to 5 1/2 inches. Very strong blow at the start of the final flow period, hitting BOB instantaneously. Gas to surface instantaneously. Weak surface blow back after we bled line off (33 min.) of the final shut-in period, building, reaching BOB 6 minutes. Times; 15, 60, 60, 90. Oil Gravity: 35.						

RECOVERY

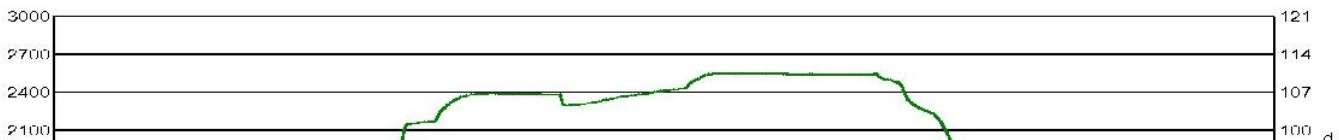
Feet	Description	Gas	Oil	Water	Mud
3200	Gas in Pipe	100% 3200ft	0% 0ft	0% 0ft	0% 0ft
220	Clean oil	0% 0ft	100% 220ft	0% 0ft	0% 0ft
320	Very gassy mud cut oil	18% 57.6ft	57% 182.4ft	0% 0ft	25% 80ft
60	Gassy, water, very heavy oil cut mud	10% 6ft	35% 21ft	18% 10.8ft	37% 22.2ft

DST Fluids 35000

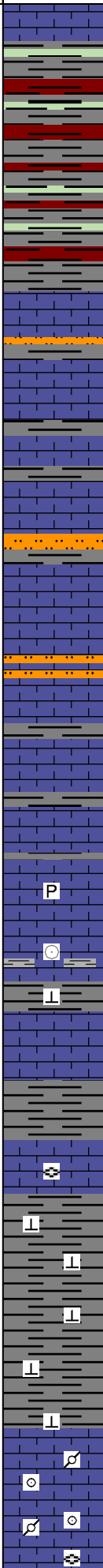
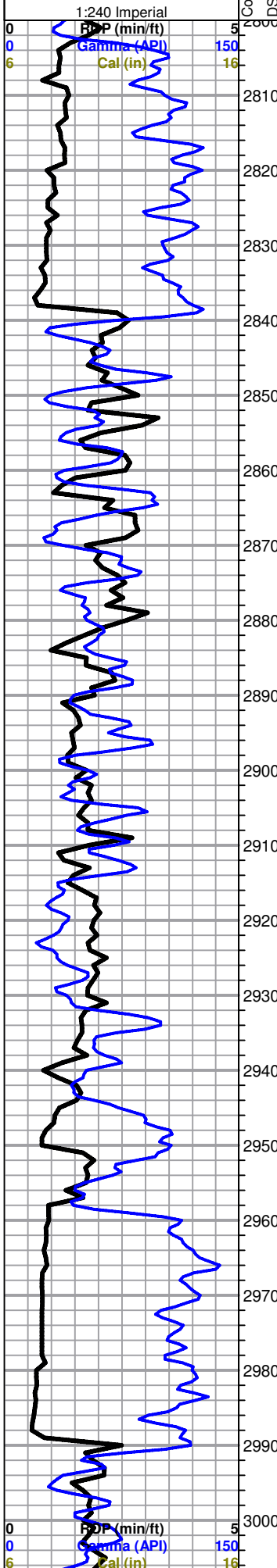
RICKETTS TESTING

(620) 326-5830

Page 2



Cored Interval
DST Interval



Shelby Resources, LLC
1-8 McCune
1600' FSL & 350' FWL
Sec. 8-T25S, R12W
Stafford County, KS

Drilling Contractor: Sterling Drilling, Rig # 2
Tool Pusher: Shane Downs (620-388-3474)

Geologist: Charlie Sturdavant
(303) 907-2295 (cell)

Mixed shale, limestone and siltstones.

Limestone: lt gray, sli fossiliferous, tight, mudstone to wackestone.
 Some with thin, gray shale laminations..

Limestone: lt gray, crypto-xln micrite to micro-xln mudstone w/
 argillaceous content. No porosity. No fossils. Tr pyrite.

P

Limestone as above with thin, gray shale laminations. Tr brownish-gray,
 crinoid-bearing wackestone.

C

L

Limestone: lt gray to cream, fussulinid-bearing wackestone, no shows.
 Tr brachiopods. Tr brown, fossiliferous wackestone.

C

Shale: gray, micaceous, tr foss., calcareous.

L

L

L

L

L

L

L

C

C

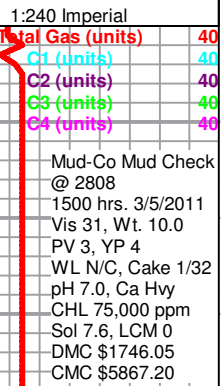
C

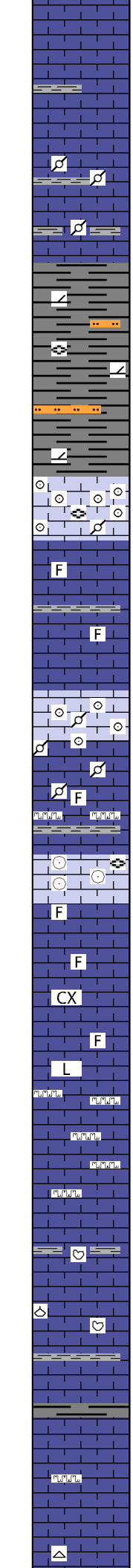
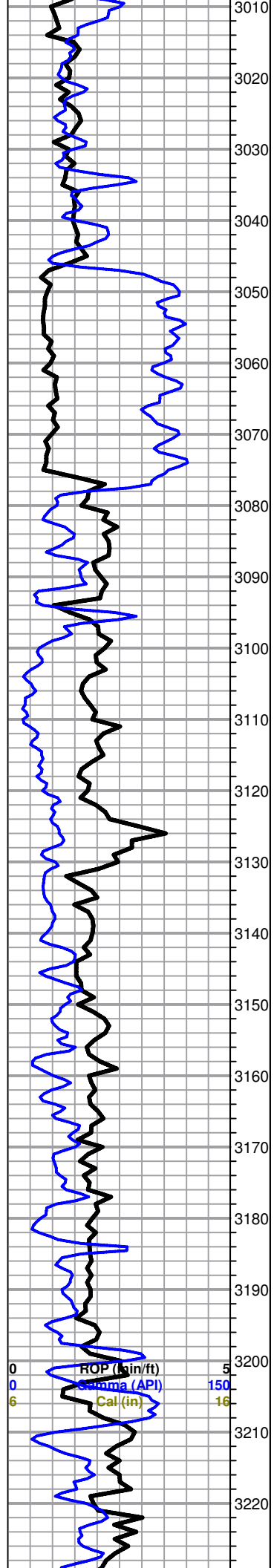
C

Howard Limestone 2990 (-1078)

Limestone: brown, fossiliferous, fussulinids, oolitic, peletal, wackestone
 to packstone.

Limestone: gray to brown, mudstone, micr xln, most in dense and hard





Limestone: gray to brown, mudstone, micro-xln, most is dense and hard w/ no porosity, some is chalky and soft, very little character

Limestone: cream to lt tan, fragmental, micro-xln, tr pellets, tr thin, gray shale laminations, wackestone, dense, tight, no shows.

Severy Shale 3046 (-1134)

Shale: gray to lt gray, laminated, micaceous, dolomitic, carbonaceous matter, w/ stringers of lt gray siltstone,

Topeka 3076 (-1164)

Limestone: cream to lt grayish-tan, fossil debris, fussionids et al, pellets, tr oolites, grainstone to packstone to wackestone w/ styloites. Micro-xln, well-cemented, no shows.

Limestone: lt gray, well-cemented oolitic to peletal, fossiliferous grainstone. Also lt brown, peletal, fossiliferous, stylolitic, packstone to wackestone. Little porosity, micro-xln, no shows.

Limestone: cream, fossiliferous, crinoids, fussionids, packstone to wackestone, micro-xln, tight, no shows.

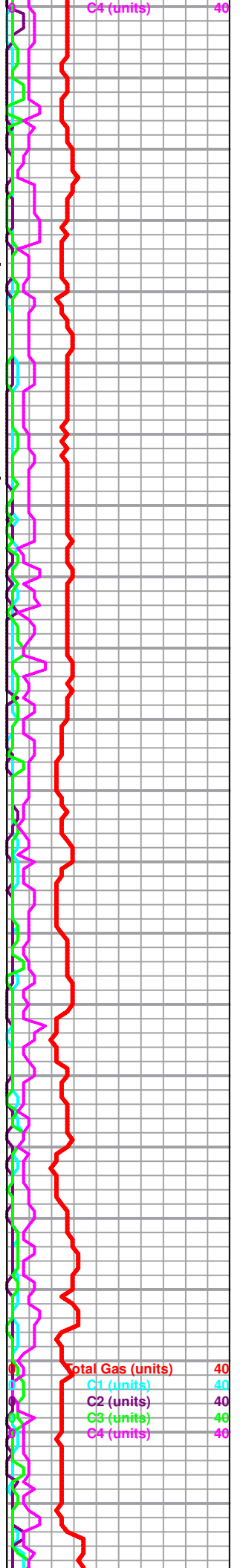
Limestone: cream, dense, tight, tr fossiliferous, crypto-xln groundmass, clean wackestone to lithographic micrite.

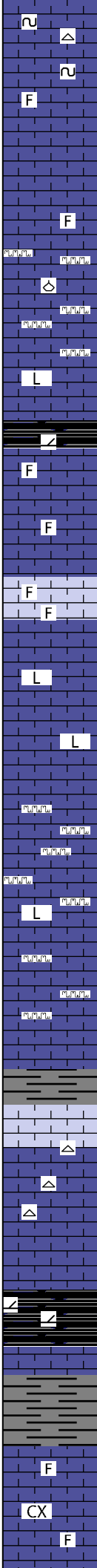
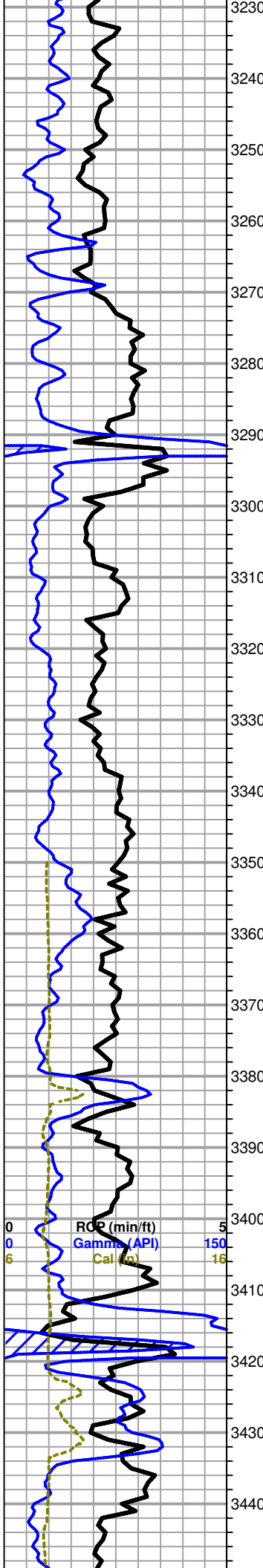
Limestone as above with thin shale laminations and stylolites.

Limestone: cream, fossiliferous wackestone, echinoid spines, brach., f-xln granular to lithographic micrite.

Limestone: lt gray, micro-xln, sli fossil, mudstone. Tr stylolites.

Limestone: cream, micro-xln, mudstone, no porosity, no shows, tr





Limestone: cream, micro-xln, mudstone, no porosity, no shows, tr glauconite, tr lithographic. Tr white, vitreous chert.

Limestone: lt tan, micro-xln, some fossil debris, mud-supported, dense, no porosity, wackestone. Some is chalky.

Limestone: Cream to lt tan, lithographic micrite w/ stylolites, dense, little porosity, no shows, tr brach.

Queen Hill Shale 3288 (-1976)

Shale: black, carbonaceous, dolomitic.

Limestone: cream, f-xln, sli fossiliferous, clean wackestone to packstone, tight, no shows.

Limestone as above, becoming micritic, lithographic with depth.

Limestone: lt brown to tan, few fossil frags, mostly micritic w/ stylolites, micro-xln, tight, no shows.

Shale: gray, calcareous.

Limestone, cream, fossiliferous, clean packstone, micro-xln to f-xln, no shows. Tr sparry calcite, tr cream, vitreous chert.

Limestone: cream to tan, micrite w/ lithographic zones.

Heebner 3410' (-1498)

Shale: black, carbonaceous, dolomitic.

Limestone: lt brown, micritic, tr foss.

Toronto 3432 (-1540)

Limestone: cream to lt tan, micro- to crypto-xln, tr fossils., dense, tight, mudstone. No shows.

Mud-Co Mud check @ 3313 ft. 0850 hrs 3/6/2011 Vis. 51, Wt. 9.0 PV 18, YP 15 WL 9.2, Cake 1/32 pH 11.0, Ca 20ppm CHL 5300 ppm Sol 4.7, LCM 2 DMC \$2091.50 CMC \$7958.70

Total Gas (units) 40
C1 (units) 40
C2 (units) 40
C3 (units) 40
C4 (units) 40

Douglas 3454 (-1542)

Sandstone: quartzose, very fine-grained to siltstone, calcareous cement, micaceous, and sli argillaceous.

Shale: sudden flooding of sample tray with gray, calcareous, micaceous, thinly-laminated.

Shale as above. Still a few individual, sub-rounded, fine-grained qtz grains in the bottom of the tray.

Sandstone: lt gray, qtzose, fine- to vf-grained, dolomitic cement, friable, black magnetite specks, qtz arenite.

Sandstone as above, w/ organic matter.

Shale: gray, non-calc, thinly-laminated, soft.

Shale: gray as above, w/ pyrite.

Brown Lime 3462 (-1650)

Limestone: brown, micro-xln, tr fossil frags, wackestone. Dense, tight, no shows.

Shale: gray, thinly-laminated.

Lansing 3584 (-1672)

Limestone: tan to lt brown, fossiliferous, pisolites, brach, echinoids, pellets, coarsely-grained, med- to micro-xln, fair inter-xln porosity, no shows. Tr pyrite.

Limestone: cream, fossil debris w/ f-xln groundmass, some vugs, tr oolitic grainstone w/ inter-xln porosity and staining. Dull yellow fluor w/ weak cut. Mostly packstone.

60 min sample: Limestone as above, becoming micritic with depth. Strong aroma in sample cup, bleeding gas from vugs, very few fragments w/ oil staining. Oil staining along fractured surfaces.

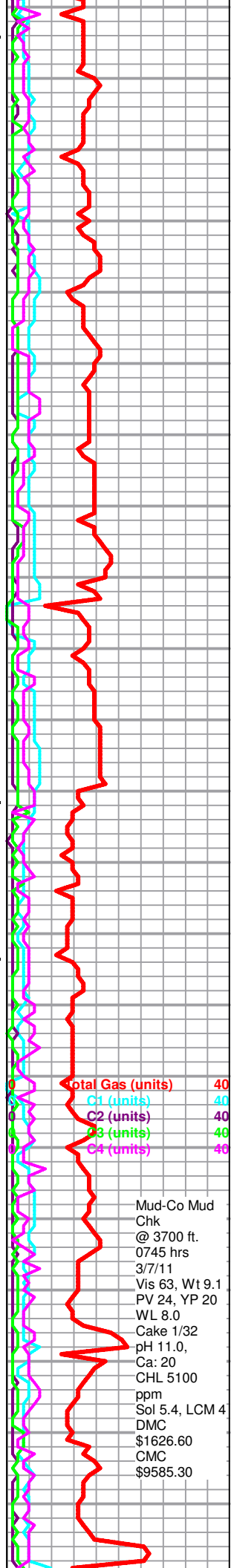
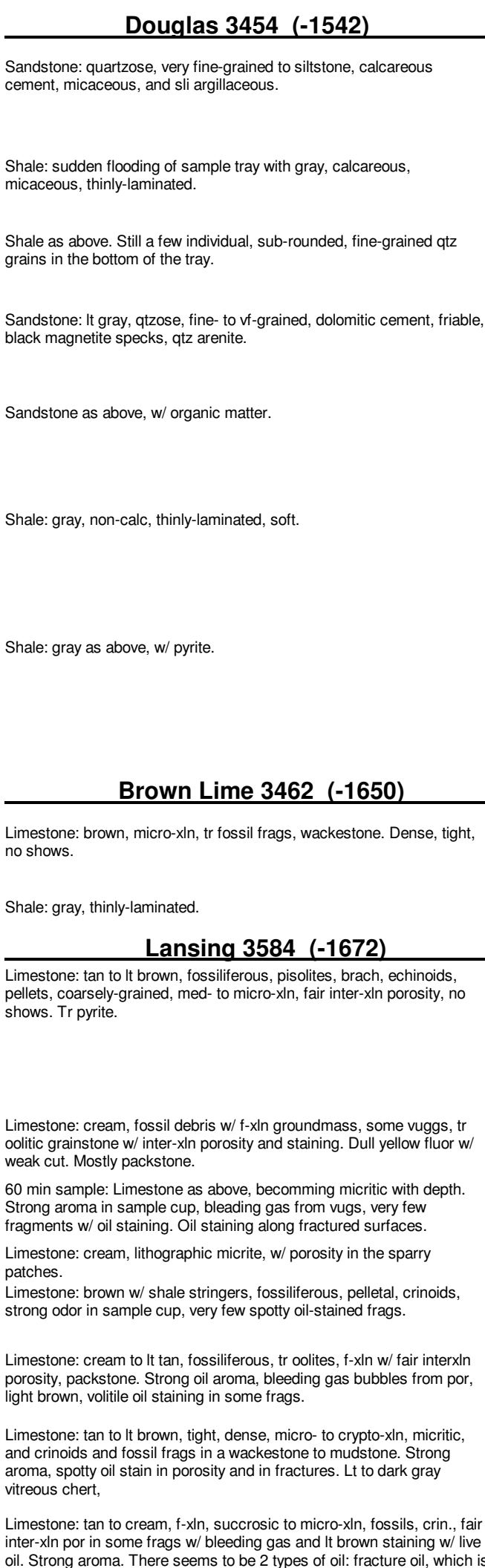
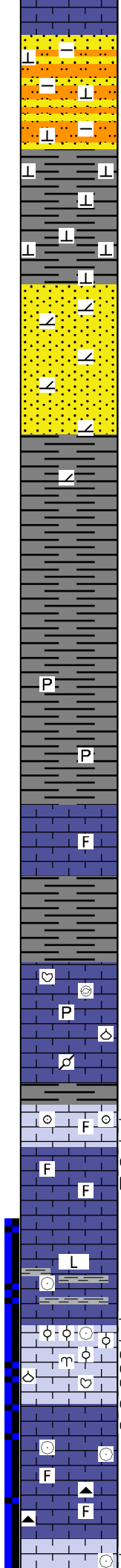
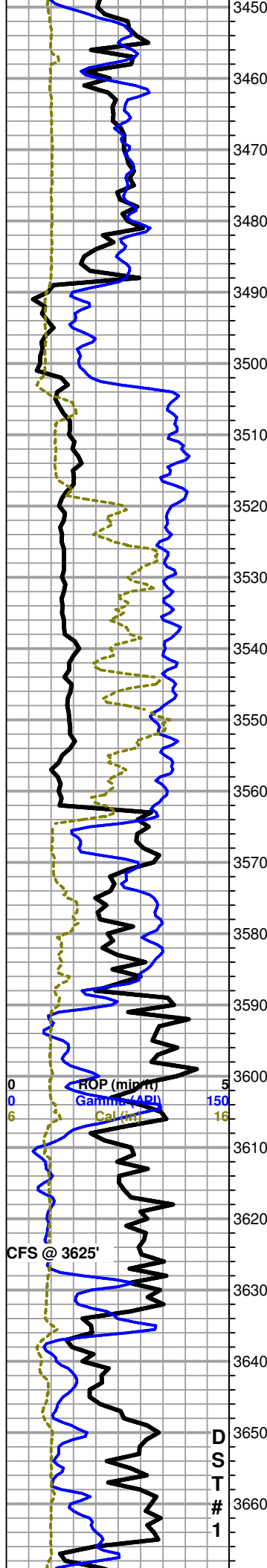
Limestone: cream, lithographic micrite, w/ porosity in the sparry patches.

Limestone: brown w/ shale stringers, fossiliferous, pelletal, crinoids, strong odor in sample cup, very few spotty oil-stained frags.

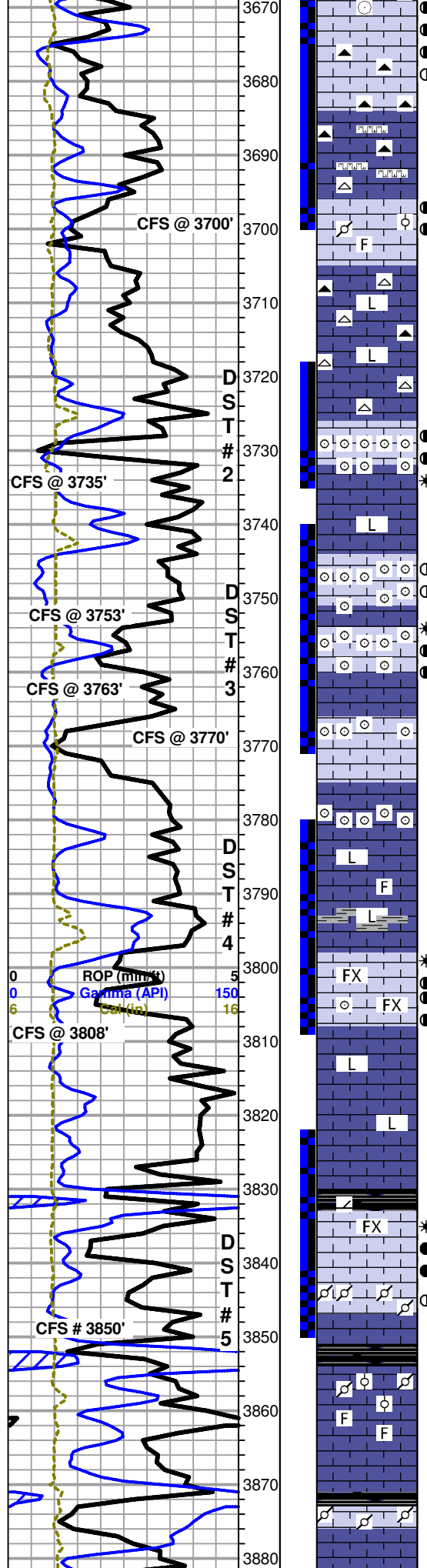
Limestone: cream to lt tan, fossiliferous, tr oolites, f-xln w/ fair interxln porosity, packstone. Strong oil aroma, bleeding gas bubbles from por, light brown, volatile oil staining in some frags.

Limestone: tan to lt brown, tight, dense, micro- to crypto-xln, micritic, and crinoids and fossil frags in a wackestone to mudstone. Strong aroma, spotty oil stain in porosity and in fractures. Lt to dark gray vitreous chert,

Limestone: tan to cream, f-xln, succrosic to micro-xln, fossils, crin., fair inter-xln por in some frags w/ bleeding gas and lt brown staining w/ live oil. Strong aroma. There seems to be 2 types of oil: fracture oil, which is



Mud-Co Mud	40
Chk	40
@ 3700 ft.	40
0745 hrs	40
3/7/11	40
Vis 63, Wt 9.1	40
PV 24, YP 20	40
WL 8.0	40
Cake 1/32	40
pH 11.0,	40
Ca: 20	40
CHL 5100	40
ppm	40
Sol 5.4, LCM 4	40
DMC	40
\$1626.60	40
CMC	40
\$9585.30	40



dark and heavy to dead, possibly from above zones, and this live oil from the C, D, and E or F zones. Gray to lt gray, mottled, vitreous chert.

Limestone: tan, lithographic micrite w/ stylolites. Multi-colored, vitreous chert. White, tan, lt gray, gray, some frags mottled w/ several colors.

3-7-2011 McCune #1-8 DST #1.pdf

@ 3700': 30 min sample: Limestone: lt tan, f-xln to med-xln, stained w/ light oil, bleeding gas, strong aroma, bright yellow fluor, good cut. Probably from above oil zones.
60 min sample: Ls: tan, pelletal/oolitic grainstone w/ some inter-xln porosity, but no shows.

Limestone: tan, f-xln, granular, pellets, oolites, fossiliferous, packstone. No shows.

Limestone: cream to tan, micro-xln, lithographic micrite, porosity only in the sparry patches. Chert, gray, lt gray, cream, tan, mottled, spicular, vitreous, conchoidal fractures.

3-8-2011 McCune #1-8 DST #2.pdf

Limestone: lt tan, oolitic grainstone, good inter-oolitic and oomoldic porosity, spotty staining of oil, no aroma, slow cut. 60 min sample has fair aroma and more fragments with more, live oil and bleeding gas. Oil staining along fracture surfaces. Becomes tan micrite with depth.

Micrite: tan to lt brn, lithographic.

3-9-2011 McCune #1-8 DST #3.pdf

Limestone: cream to tan, oolitic grainstone with f-xln inter-oolite porosity and oil staining, good oil odor, dull to bright yeollw fluor, good cut. No drilling break. Most oolitic fragments are very well-cemented, w/ no porosity.

Limestone: cream to lt tan, oolitic grainstone w/ good inter-oolite porosity bleeding gas and live oil staining. Bright yellow fluor, good streaming cut. The sample cup had an oil aroma. Oil along fractures.

Limestone: cream, oolitic grainstone w/ good inter-oolitic porosity, but no shows. Cream-colored micrite +/- sparry calcite=lithographic separates the oolitic zones.

Limestone: lt tan to tan, crypto-xln micrite w/ sparry calcite patches, lithographic. Good inter-xln porosity in the isolated sparry patches, but the rock will be tight. No shows. Also some very well-cemented, tight, oolitic granstone.

3-9-2011 McCune #1-8 DST #4.pdf

Stark Shale 3791 (-1879)

Limestone: brown to lt gray, fossil fragments, argillaceous, f-xln, no porosity, no shows, wackestone.

Limestone: tan to lt tan, f- to med-xln granular, recrystallized, fair secondary inter-xln porosity w/ bleedng gas, spotty to streaky oil staining, fair aroma, live oil, instant, streaming cut. Tr oolites.

Limestone: cream to lt tan, crypto-xln, lithographic micrite. Very dense, tight, no shows.

3-10-2011 McCune #1-8 DST #5.pdf

Shale: black, carbonaceous, dolomitic.

Limestone: lt tan, f-xln, w/ inter-xln porosity, possibly recrystallized oolites, Strong aroma, good oil saturation to spotty, depending on the amount of porosity, bright to dull yellow fluor, instant streaming cut. Lower part is a lt gray to tan, pelletal grainstone w/ little por, but some frags have spotty oil staining.

Limestone: tan, crypto-xln, micrite w/ some sparr, pyrite, dense, no por., no shows. Black shale.

Limestone: tan to lt brown, pelletal, oolitic, fossiliferous, micro-xln, mud-supported wackestone, and lt brown, crypto-xln, non-foss micrite. Both are dense, hard, tight, w/ no shows.

Base Kansas City 3871 (-1959)

Shale: black, carbonaceous, dolomitic.

Limestone: tan to lt brown, mcro-xln, foss, wackestone to cream, pelletal packstone. No shows.

Limestone: Light greenish-cream, pelletal, fossiliferous, crinoids, argillaceous, soft, mottled w/ brown patches, tr lt green shale, wackestone. No shows.

Pipe strap was 5.04' long @ 3700'

@ 3735'
Vis: 59,
Wt 9.0

@ 3770'
Vis: 51,
Wt 9.0

scale change

Total Gas (units)	100
C1 (units)	100
C2 (units)	100
C3 (units)	100
C4 (units)	100

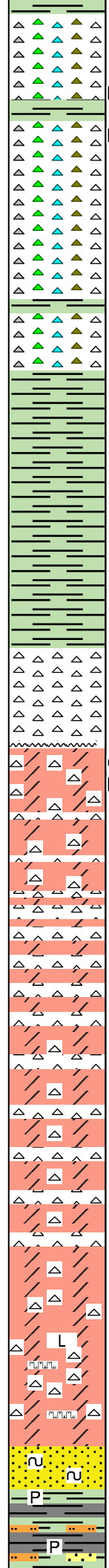
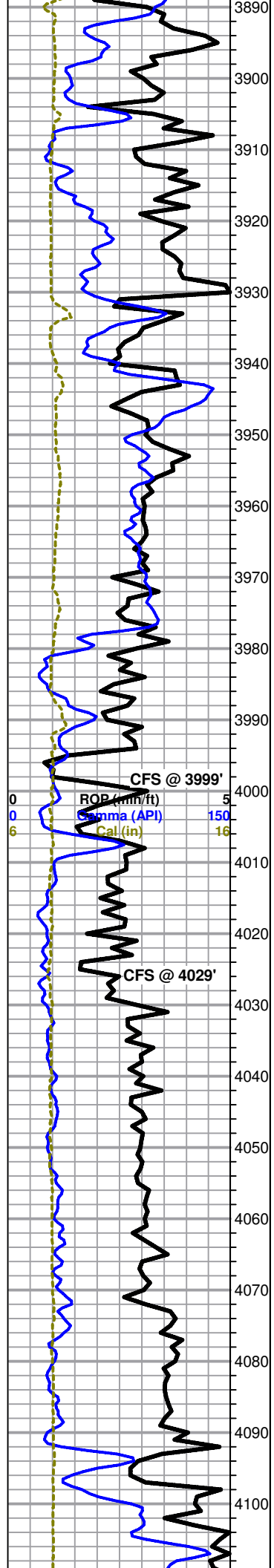
@ 3808'
Vis: 57
Wt: 9.1

Total Gas (units)	100
C1 (units)	100
C2 (units)	100
C3 (units)	100
C4 (units)	100

scale change

Total Gas (units)	300
C1 (units)	300
C2 (units)	300
C3 (units)	300
C4 (units)	300

Pipe strap was 3.15' long @ 3850'



Limestone: lt tan, crypto- to micro-xln, micritic, dolomitic, laminated w/ lt green shale, Streaks and flakes of dead oil, no cut. Tr orange to yellow, vitreous, translucent chert.

Mixed shales, dirty ls, and a little chert. Streaks of dead oil in most rock types. Vy. lt. greenish-gray tripolitic chert.

Limestone: lt tan to cream, sli fossiliferous, clean, lithographic, micritic, wackestone to mudstone. Also the mix of lithologies as above. Slight increase in the amount of chert.

Conglomerate: vari-colored shales, lt green, lt gray, lt brown, yellow, red. Vari-colored chert: translucent, red, tan, orange, yellow, vitreous. Dolomitic ls: very lt green w/ black dendrites of dead oil (?).

Mixed lithologies as above w/ a noted increase in chert content. Also vfgr sandstone, black, from dead oil flakes (gilsonite), no fluor, no cut.

Mixed lithologies as above w/ an increase in a waxy, greenish-aqua shale.

As above.

As above.

As above w/ increase in chert content, mostly white, opaque. Also a ls, cream, f-xln, w/ black, spotty/streaky, dead oil to gilsonite staining, no fluor or cut.

Viola 3994 (-2082)

Dolomite: cream to white, f-xln, recrystallized, fair porosity, spotty oil show, poor cut. Slight oil aroma in sample cup. 60 min sample has an increase in the amount of white and mottled white/brown chert and white succrosic dolomite, very few fragments with oil of any kind, and then it is streaky and neary dead.

Dolomite: cream to white, f- to med-xln succrosic to dense, crypto-xln micrite. Abundant white, vitreous chert.

Dolomite: cream, f-xln, fair to poor inter-xln porosity, to micritic, dense and hard w/ no porosity, no shows. White, vitreous chert.

Dolomite: cream to lt grayish-tan, f-xln to crypto-xln. Chert: white to cream, vitreous, conchoidal fracturing, no shows.

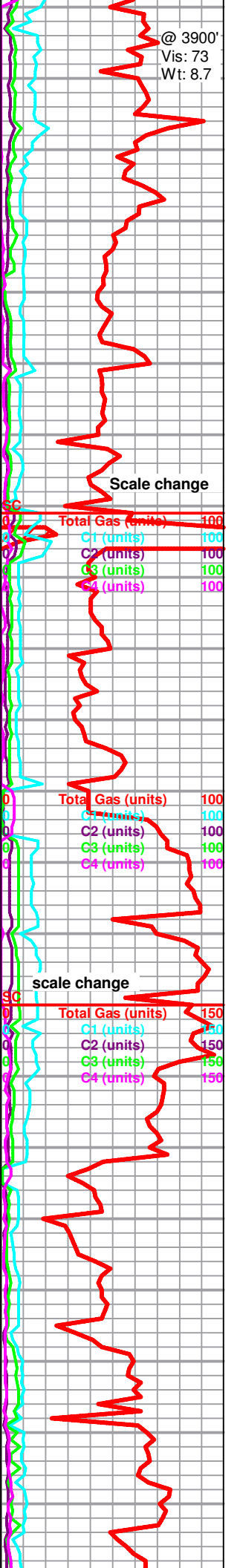
Dolomite: lt grayish-tan, crypto-xln, micritic, chert is now lt grayish-tan. The white color is gone.

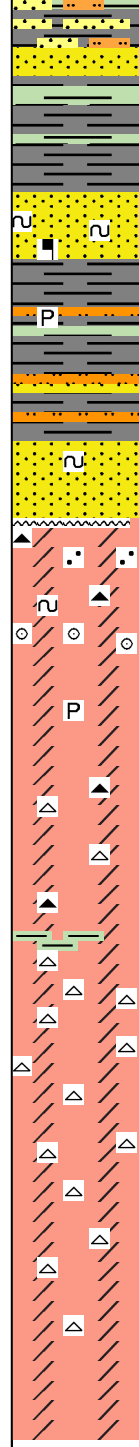
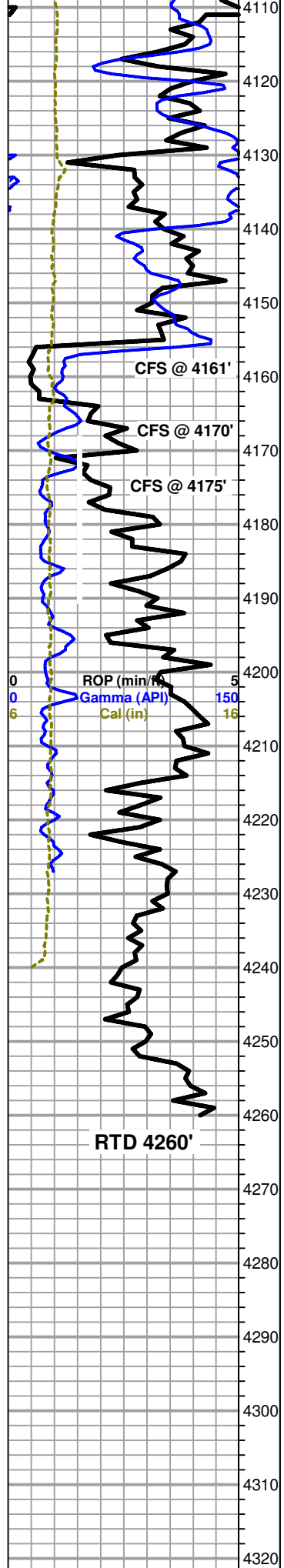
Dolomite: grayish-tan, med- to coarsely-xln, also stylolitic micrite and lithographic micrite, chert as above.

Simpson Sand 4092 (-2180)

Sandstone: white to lt green, glauconitic, dolomitic, well-sorted, mature, f-gr, qtz arenite. interlayered with greenish-turquoise, waxy, pyritite-bearing shale. No shows.

Shale: gray, dark greenish-gray, inter-laminated with vf-gr, glauconitic





ss and siltstone, w/ dolo cement.

Shale: increase in gray color.

Sandstone: lt gray, qtz-rich, w/ black grains (magnetite?), pyrite, glauconite, well-sorted, well-rounded, fine-grained, mature, carb cement. No shows.

Shale: dominated by gray, also greenish-gray, soft, non-calc. laminations of gray, pyritic siltstone, calc cement. As above w/ tr gray, f-gr, well-sorted ss.

Sandstone: white, med-grained, well-sorted, well-rounded grains, silica cement, fairly hard, but abundant free qtz sand grains in bottom of tray, good inter-granular porosity, qtz arenite. Tr glauconite, slight hydrocarbon aroma in sample cup, no shows.

Arbuckle 4163 (-2251)

Dolomite: lt pinkish-gray, lithographic micrite, Chert: oolitic, lt pinkish-tan, to dark gray, vitreous. Fair aroma in sample tray.

Dolomite: lt pinkish-tan, f-xln, succrosic in parts, tr pyrite. Fair inter-xln porosity, Weak hydrocarbon aroma, no shows. Some fragments are arenaceous, w/ vf-gr qtz sand. Tr glauconite.

Samples from 4180 and 4190 also have a hydrocarbon aroma, but no oil shows could be detected. Tr vugular porosity.

Dolomite: color changed to tan and texture has changed to micrite, tite, dense. No shows. Finally found one fragment of tan dolo w/ vugular porosity, gas bubbles and oil saturation. Bright yellow fluor and slow cut. Shows evidence of having once been an oolitic grainstone. Sample lags back to 4170-80'. Tr lt orange vitreous chert. Some chert is oolitic, dark gray and pyritic in the inter-oolite cement.

Dolomite: lt tan to cream, succrosic, f-xln, fair porosity, soft, no shows. thin laminations of aqua-blue-green shale. No shows.

Dolomite: as above w/ white to cream to lt brown, vitreous, oolitic to opaque chert.

As above

Cherty dolomite as above. Dolo rhombs to 0.6mm in size.

Dolomite: cream to lt tan, crypto-xln, dense, hard, tight, no shows.

RTD 4260 (-2348)

RTD 4260' @ 1446 hrs 3/12/2011
Superior Well Service Log TD: 4264
Completed Logging Operations @ 0205 hrs
Geologist off location @ 0230 hrs 3/13/2011

Mud-Co
Mud Ck
@ 4180'
0950 hrs.
3/12/2011
Vis 53,
Wt 9.0
PV 15,
YP 10
WL 8.4
Cake 1/32
pH 10.5
CHL 6500
Ca 60ppm
Sol4.6
LCM 4
DMC
\$852.70
CMC
\$13136.15

Total Gas (units) 150
C1 (units) 150
C2 (units) 150
C3 (units) 150
C4 (units) 150

4330

4340

3-7-2011 McCune #1-8 DST #1.pdf

3-8-2011 McCune #1-8 DST #2.pdf

3-9-2011 McCune #1-8 DST #3.pdf

3-9-2011 McCune #1-8 DST #4.pdf

3-10-2011 McCune #1-8 DST #5.pdf