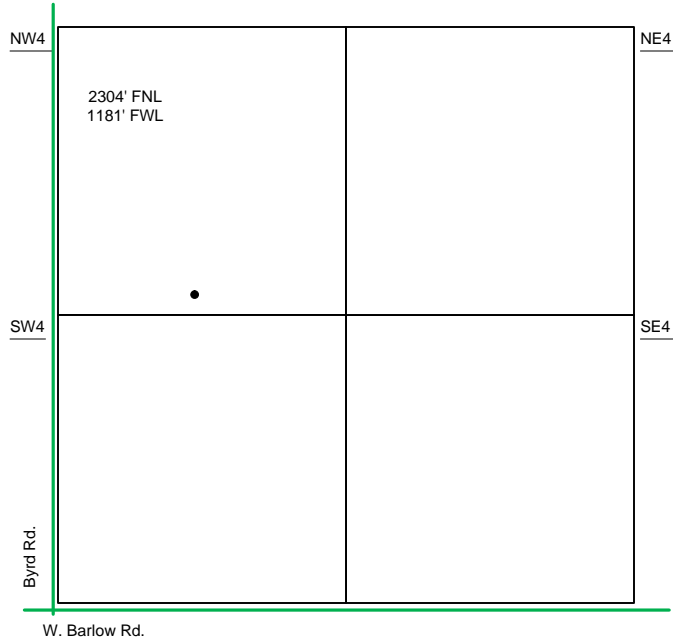
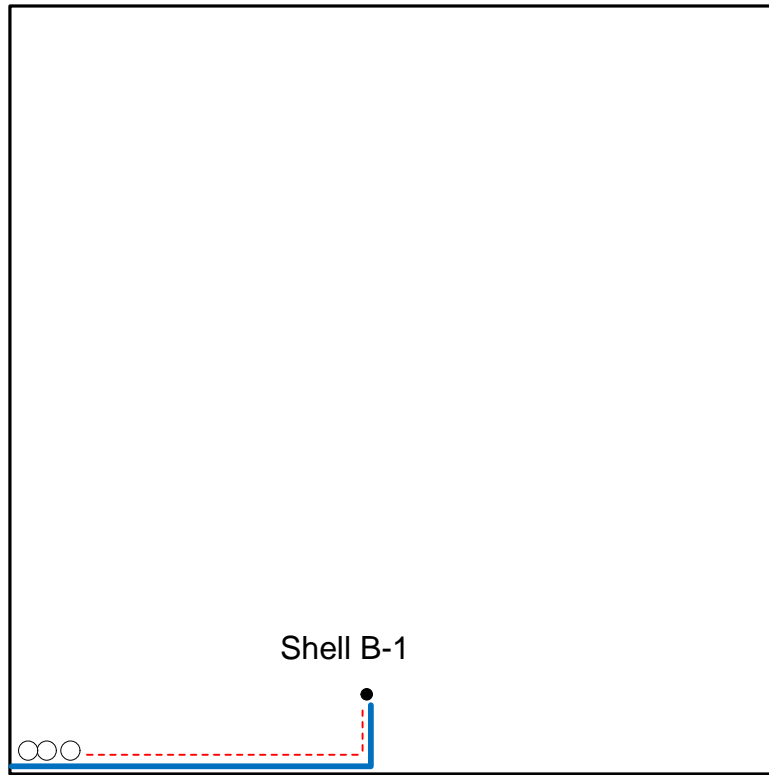


Proposed Plan of Construction
 Shell B-1
 Sec 17-T22S-R34W
 Finney County, KS



Sec 17 - T22S - R34W

NW/4



- Well Location
- Lease Roads
- - - Proposed Pipeline
- Tank Battery Equipment
- Power Lines
- - - Existing Pipeline

The **PROPOSED** Tank Battery for the Shell B-1 is located in the SW Corner of the NW quarter.

Detail of
 NW/4 Sec 17-T22S-R34W

Note-Drawing **Not** to Scale

Site Diagram
 Shell B-1
 July 5, 2011

