

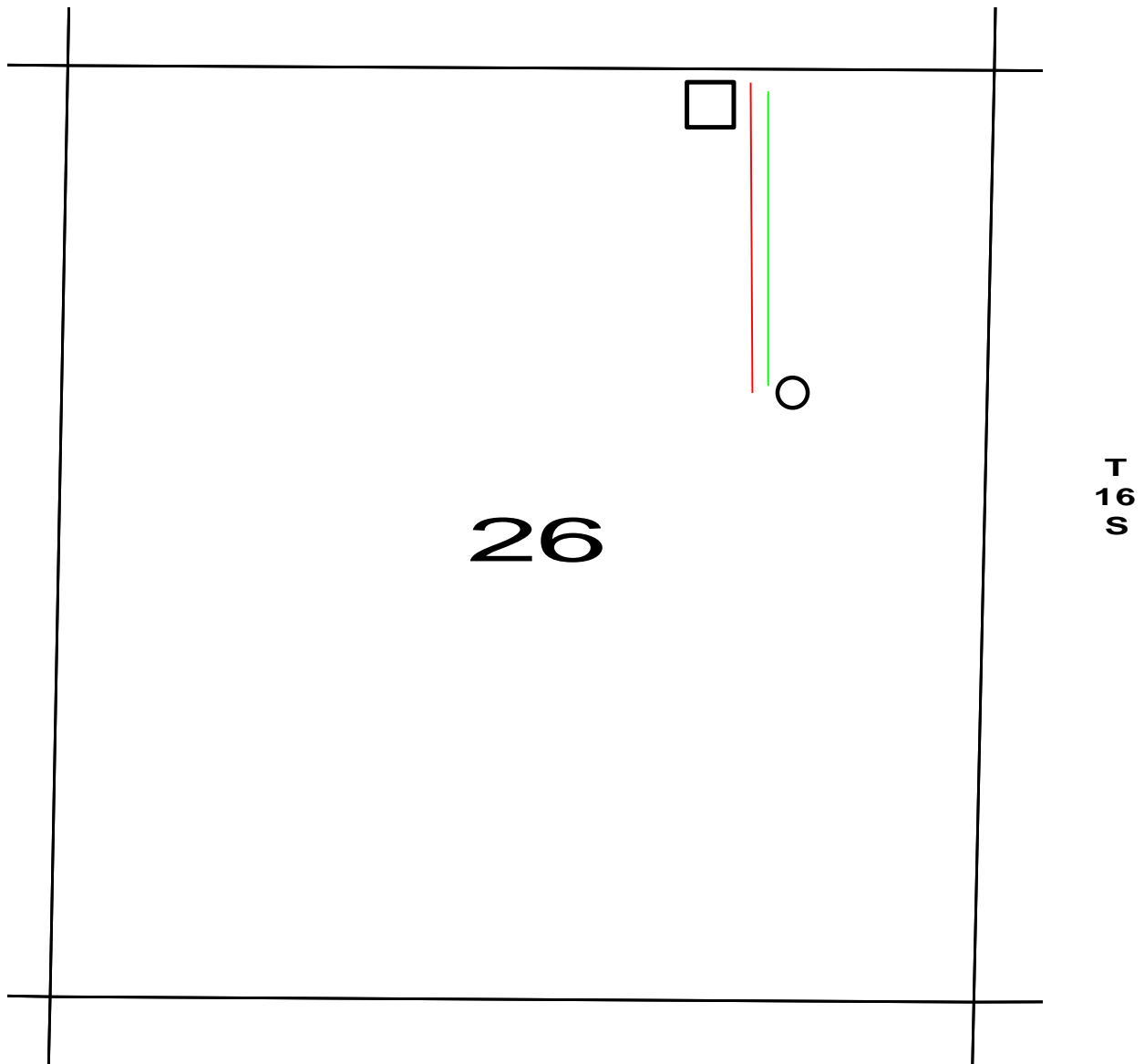
OPERATOR : Samuel Gary Jr & Associates, Inc 1515 Wynkoop Street, Suite 700
Denver, Colorado 80202 office :303-831-4673 ; fax :303-863-7285

WELL NAME : Clair 4-26

LOCATION : 1625 FNL / 1180 FEL Sec. 26 - 16S - 16W
RUSH COUNTY, KS

SURFACE OWNER: Jean Clair et vir
1004 4th St.
Great Bend, KS 67530

R 16 W



○ PROPOSED WELL LOCATION

□ ESTIMATED LOCATION OF TANK BATTERY

— ESTIMATED LOCATION OF FLOW LINES

— ESTIMATED LOCATION OF ELECTRICAL LINES