

ADVANTAGE ELEVATIONS

OIL FIELD SURVEYORS

BOX 8604 - PRATT, KS 67124
(620) 672-6491

717111

INVOICE NO

FALCON EXPLORATION INC

OPERATOR

1-7

NO

SWAYZE

FARM

Clark

COUNTY

7

S

30s

T

22w

W

715' FSL & 415' FEL of Sec.

LOCATION

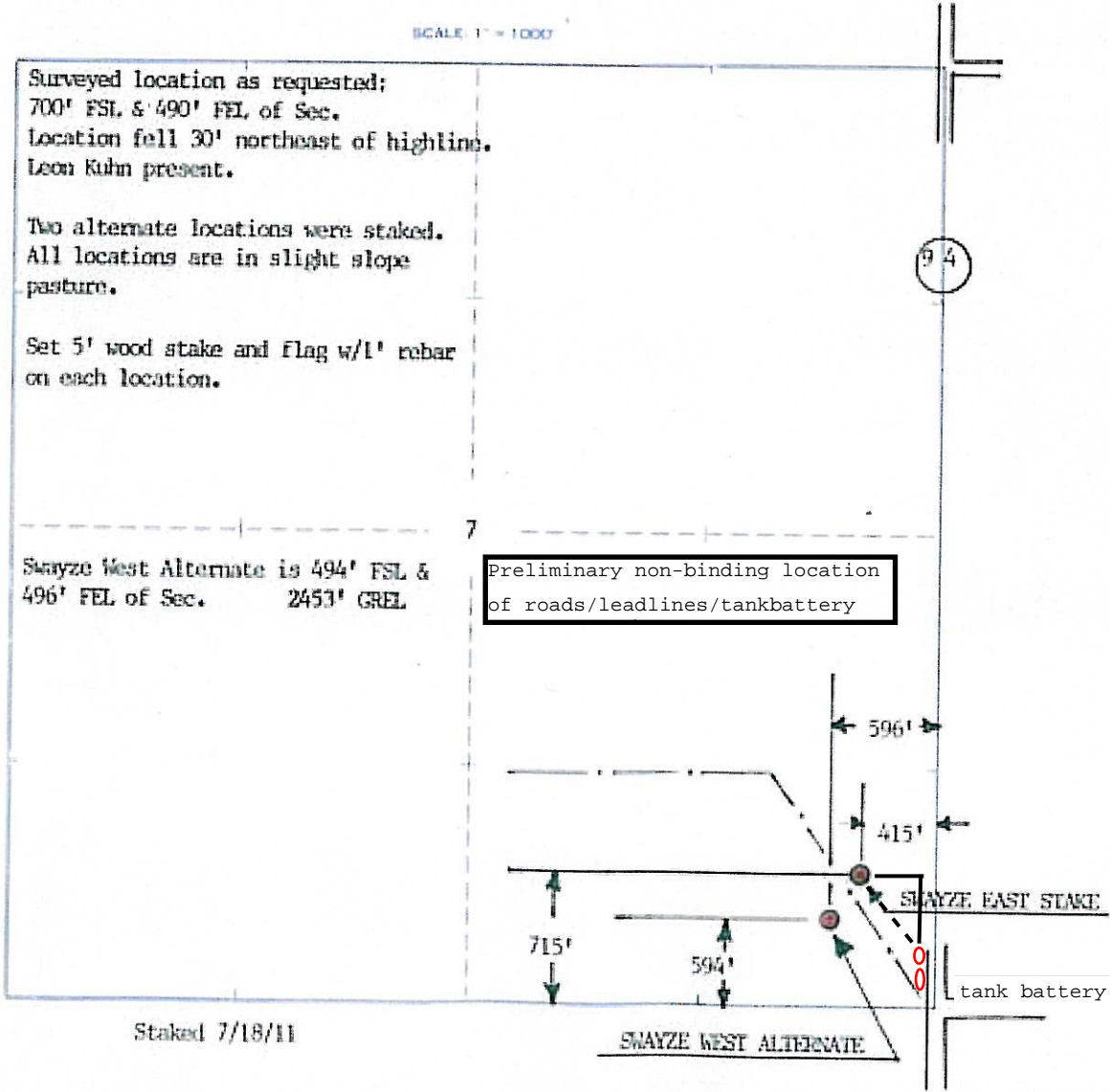
ELEVATION 2451 GR

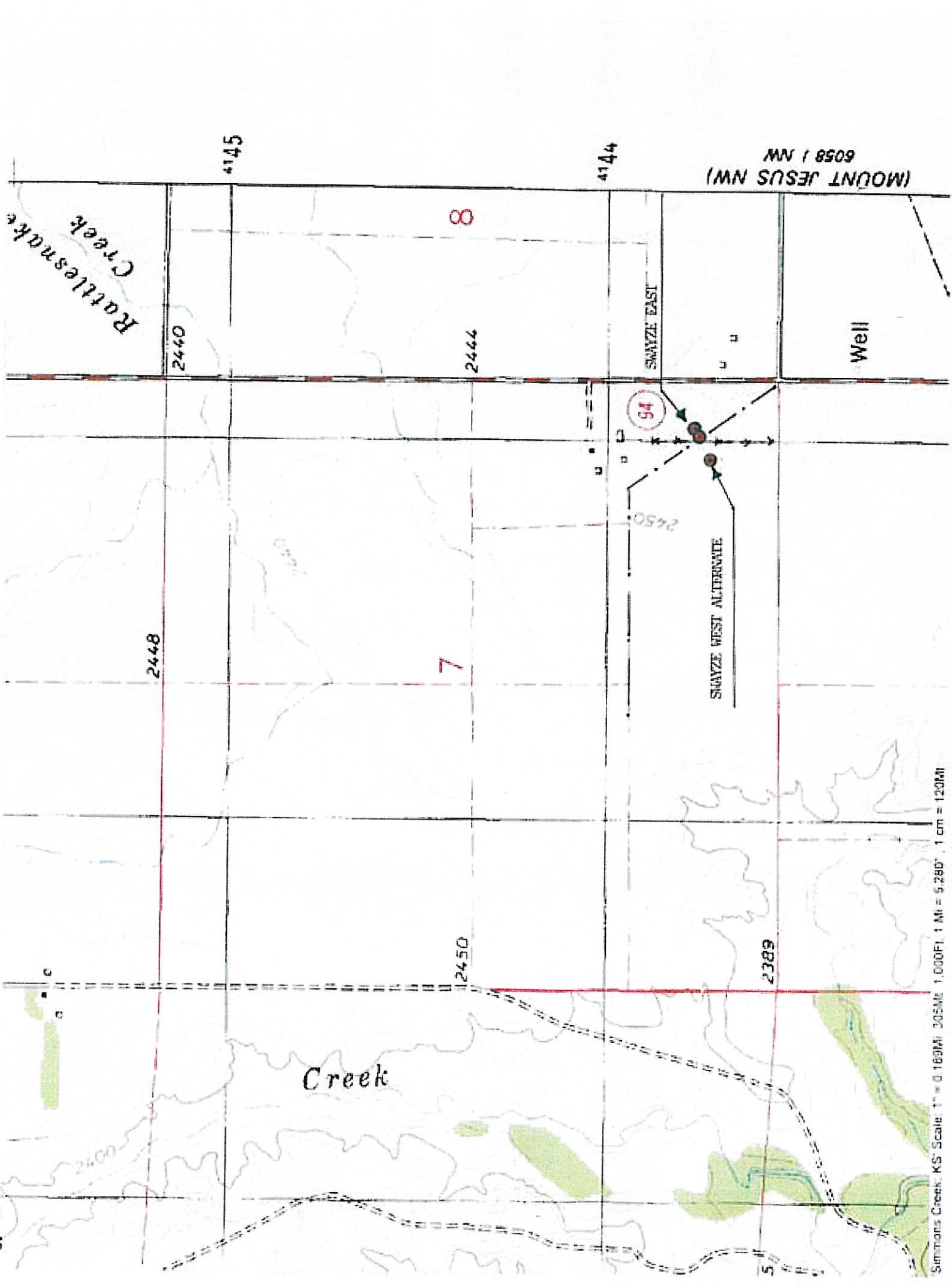


FALCON EXPLORATION INC.
125 N Market St. Ste 1252
Wichita, KS 67202

AUTHORIZED BY: Mike Mitchell

SCALE 1" = 1000'





(MOUNT JESUS NW)
6058 / NW

Rattlesnake
Creek

2440

4145

8

2444

4144

SWAYZE EAST

Well

94

2450

SWAYZE WEST ALTERNATE

2448

7

Creek

2450

2389

Simtons Creek, KS Scale: 1" = 0.163MI 305M; 1,000FT; 1 MI = 5,280'; 1 cm = 120MI