

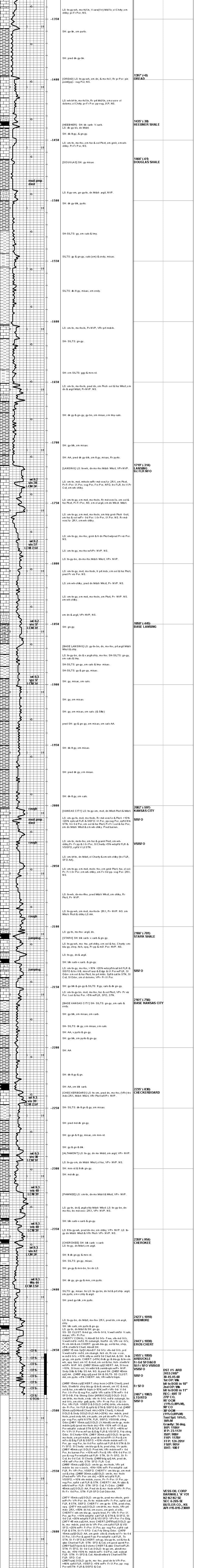
ROGER L. MARTIN
INDEPENDENT PETROLEUM GEOLOGIST 316-250-6970

GEOLOGIST'S REPORT
DRILLING TIME AND SAMPLE LOG

COMPANY VESS OIL CORPORATION		ELEVATIONS	
LEASE BARNHILL "A" # 31	FIELD EL DORADO	KB 1405'	GL 1399'
LOCATION 1750' FSL & 1320' FEL	SECTION 6 TOWNSHIP 26S RANGE 5E	Measurements Are All From KB: 1405'	
COUNTY BUTLER STATE KANSAS	CONTRACTOR C & G Drilling, Rig # 1	CASING	
SPUD 04/03/2011 COMP 04/08/2011	RTD 2487' (-1082) LTD 2484' (-1079)	SURFACE 8-5/8" set @ 263' KB.	
DIL, DCPL, MEL	ELECTRICAL SURVEYS	PRODUCTION 5-1/2" 15.5#/ft J-55 set @ 2485' KB.	

FORMATION TOPS	LOG	SAMPLES	CHRONOLOGY
			0402/11- MURU 8-5/8" delivered. Frac and wtr tank filled.
OREAD	1397' (+8)	1397' (+8)	0403/11- Spud @ 10 AM. Set 8-5/8" cas @ 263' KB w/150 Class A 3% cc. Plug down @ 9:55 PM. Cmt did circ.
HEEBNER SHALE	1432' (+28)	1432' (+30)	0404/11- Drig @ 285'. Drill out @ 6 AM.
DOUGLAS SHALE	1466' (+61)	1466' (+61)	0405/11- Drig @ 1265'. Survey @ 1000' = 144.
LANSING LS	1719' (-312)	1719' (-314)	0406/11- Drig @ 1955'. Lost circ @ 1480'. mic.
BASE LANSING	1850' (-450)	1850' (-445)	0407/11- Circ @ 2450' in Congl. Chert. MW 9.2.
KANSAS CITY LS	1999' (-594)	2002' (-597)	0408/11- To @ 2487'. Finish lay down of DST tools.
STARK SHALE	2103' (-698)	2102' (-701)	Rig up Logans. Start logs @ 7:45 AM.
BASE KANSAS CITY	2168' (-751)	2161' (-756)	Set 58' (to 2-1/2" - 15.5#/ft J-55 casing) - 2485' 33" float shoe. 100' Total - 2487' 23". Tag bottom @ 2487'. Pick up 1". Set float shoe @ 2486' KB. Circ & rotate for 45 min. 6 centralizers, 2 baskets. Consolidated services: 500 gal mud flush.
CHECKERBOARD	2233' (-828)	2233' (-830)	125 cc. Thicket 60/60 gypsum. Good circ. Displace plug 5-8 BPFM. Caught pressure @ 34 bbls. lift pressure to 800#. Land plug @ 1200' @ 4:30 PM 0408/11. Release. It held.
CHEROKEE SHALE	2356' (-951)	2356' (-954)	
ARDMORE LS	2420' (-1015)	2423' (-1018)	
EROS CHERT	2443' (-1038)	2443' (-1038)	
ARBUCKLE DOLO	2462' (-1047)	2462' (-1048)	
RTD/LTD	2484' (-1079)	2487' (-1082)	

REMARKS:



VESS OIL CORP
BARNHILL 'A' #31
N2 N2 N2 SE
SEC 6 26S-5E
BUTLER CO., KS
API #15-015-23889