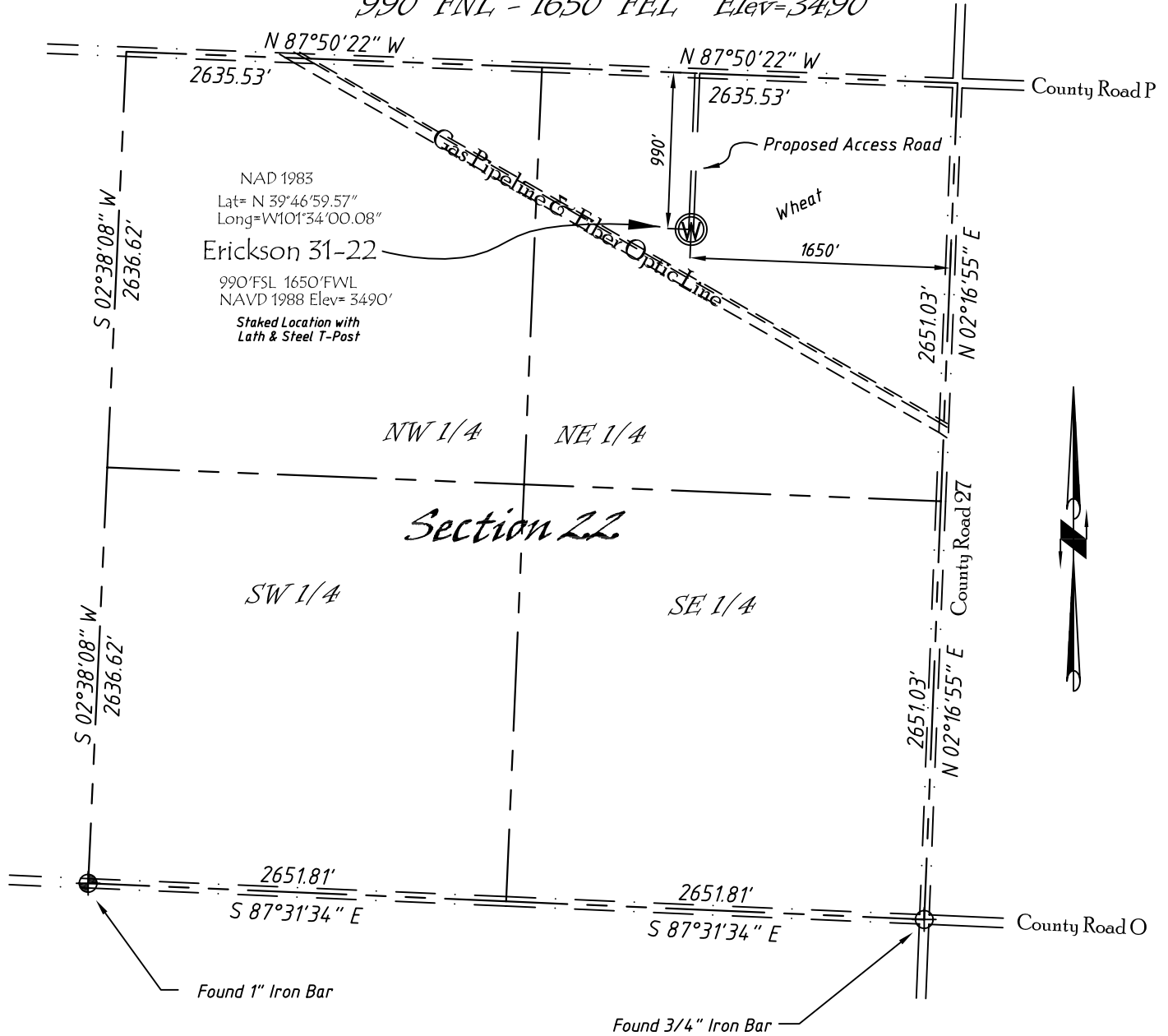


Well Location Map

Erickson 31-22

NW 1/4, NE 1/4, Section 22, T3S, R38W, 6th P.M. Cheyenne County, Kansas
 990' FNL - 1650' FWL Elev=3490'



Copyright © 2011

Directions:

From the Intersection of Hwy 161 & Hwy 36 @ Bird City, KS, Go N on Hwy 161 2 miles, to County Road P, then go W 1.3 miles, then S 990' to Staked location.

This Drawing is for Construction Purposes Only

Noble Energy, Inc.		
DRAWN GP	DATE 7/19/11	Section 22
FB B76 P14	EQ HijPro	T3S, R38W, 6th P.M. Cheyenne County, KS
SCALE 1"=1000'	SHEET 1 of 1	PROJECT NO. 1570.190



402 Walnut
 Kanorado, KS
 785/399/2551