



DRILL STEM TEST REPORT

Prepared For: **Samuel Gary And Associates**

1515 Wynkoop Ste #700
Denver, CO 80202

ATTN: Neal Sharp

26/16S/16W-Rush

Yarmer et al #1-26

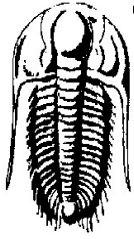
Start Date: 2011.04.04 @ 09:01:52

End Date: 2011.04.04 @ 16:21:22

Job Ticket #: 42788 DST #: 3

Trilobite Testing, Inc
PO Box 362 Hays, KS 67601
ph: 785-625-4778 fax: 785-625-5620

Printed: 2011.04.04 @ 17:59:25 Page 1



**TRILOBITE
TESTING, INC**

DRILL STEM TEST REPORT

Samuel Gary And Associates

Yarmer et al #1-26

1515 Wynkoop Ste #700
Denver, CO 80202

26/16S/16W-Rush

Job Ticket: 42788

DST#: 3

ATTN: Neal Sharp

Test Start: 2011.04.04 @ 09:01:52

GENERAL INFORMATION:

Formation: **Lansing 'F'**

Deviated: No Whipstock: ft (KB)

Time Tool Opened: 10:39:22

Time Test Ended: 16:21:22

Test Type: Conventional Bottom Hole

Tester: Dustin Rash

Unit No: 42

Interval: 3317.00 ft (KB) To 3336.00 ft (KB) (TVD)

Reference Elevations: 1975.00 ft (KB)

Total Depth: 3336.00 ft (KB) (TVD)

1965.00 ft (CF)

Hole Diameter: 7.88 inches Hole Condition: Poor

KB to GR/CF: 10.00 ft

Serial #: 6625 Inside

Press@RunDepth: 192.55 psig @ 3320.00 ft (KB)

Capacity: 8000.00 psig

Start Date: 2011.04.04

End Date:

2011.04.04

Last Calib.:

2011.04.04

Start Time:

09:01:52

End Time:

16:21:22

Time On Btm:

2011.04.04 @ 10:38:52

Time Off Btm:

2011.04.04 @ 14:29:22

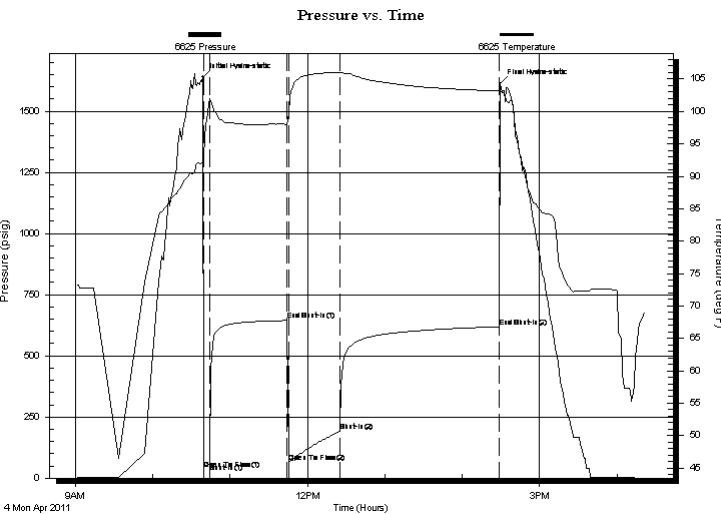
TEST COMMENT: IF-Fair building blow . Built to 8 inches.

ISI-No Return.

FF-Strong building blow . BOB in 8 minutes 20 seconds.

FSI-Return @ 1 minute 45 seconds. Died @ 6 minutes.

Time intervals- 5-60-40-12



PRESSURE SUMMARY

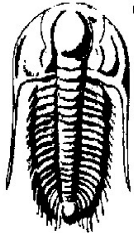
Time (Min.)	Pressure (psig)	Temp (deg F)	Annotation
0	1638.90	92.04	Initial Hydro-static
1	37.13	92.64	Open To Flow (1)
6	60.31	101.91	Shut-In(1)
66	644.57	97.96	End Shut-In(1)
67	64.82	99.59	Open To Flow (2)
107	192.55	105.98	Shut-In(2)
230	618.81	103.16	End Shut-In(2)
231	1614.03	103.07	Final Hydro-static

Recovery

Length (ft)	Description	Volume (bbl)
62.00	60%Water/40%Mud	0.87
295.00	90%Water/10%Mud	4.14

Gas Rates

Choke (inches)	Pressure (psig)	Gas Rate (Mcf/d)



**TRILOBITE
TESTING, INC**

DRILL STEM TEST REPORT

TOOL DIAGRAM

Samuel Gary And Associates

Yarmer et al #1-26

1515 Wynkoop Ste #700
Denver, CO 80202

26/16S/16W-Rush

Job Ticket: 42788

DST#: 3

ATTN: Neal Sharp

Test Start: 2011.04.04 @ 09:01:52

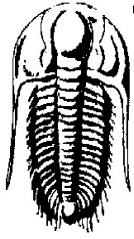
Tool Information

Drill Pipe:	Length: 3320.00 ft	Diameter: 3.80 inches	Volume: 46.57 bbl	Tool Weight:	3000.00 lb
Heavy Wt. Pipe:	Length: 0.00 ft	Diameter: 2.70 inches	Volume: 0.00 bbl	Weight set on Packer:	24000.00 lb
Drill Collar:	Length: 0.00 ft	Diameter: 2.25 inches	Volume: 0.00 bbl	Weight to Pull Loose:	5000.00 lb
			<u>Total Volume: 46.57 bbl</u>	Tool Chased	0.00 ft
Drill Pipe Above KB:	32.00 ft			String Weight: Initial	47000.00 lb
Depth to Top Packer:	3317.00 ft			Final	49000.00 lb
Depth to Bottom Packer:	ft				
Interval between Packers:	19.00 ft				
Tool Length:	48.00 ft				
Number of Packers:	2	Diameter: 6.75 inches			
Tool Comments:					

Tool Description

Tool Description	Length (ft)	Serial No.	Position	Depth (ft)	Accum. Lengths
Recorder	0.00	8374	Fluid	3288.00	
Change Over Sub	1.00			3289.00	
Shut In Tool	5.00			3294.00	
Sampler	2.00			3296.00	
Hydraulic tool	5.00			3301.00	
Jars	5.00			3306.00	
Safety Joint	2.00			3308.00	
Packer	5.00			3313.00	29.00 Bottom Of Top Packer
Packer	4.00			3317.00	
Stubb	1.00			3318.00	
Perforations	2.00			3320.00	
Recorder	0.00	6625	Inside	3320.00	
Recorder	0.00	8700	Outside	3320.00	
Perforations	13.00			3333.00	
Bullnose	3.00			3336.00	19.00 Bottom Packers & Anchor

Total Tool Length: 48.00



**TRILOBITE
TESTING, INC**

DRILL STEM TEST REPORT

FLUID SUMMARY

Samuel Gary And Associates

Yarmer et al #1-26

1515 Wynkoop Ste #700
Denver, CO 80202

26/16S/16W-Rush

Job Ticket: 42788

DST#: 3

ATTN: Neal Sharp

Test Start: 2011.04.04 @ 09:01:52

Mud and Cushion Information

Mud Type: Gel Chem	Cushion Type:	Oil API:	deg API
Mud Weight: 9.00 lb/gal	Cushion Length: ft	Water Salinity:	55000 ppm
Viscosity: 57.00 sec/qt	Cushion Volume: bbl		
Water Loss: 9.19 in ³	Gas Cushion Type:		
Resistivity: 0.15 ohm.m	Gas Cushion Pressure: psig		
Salinity: 5600.00 ppm			
Filter Cake: inches			

Recovery Information

Recovery Table

Length ft	Description	Volume bbl
62.00	60%Water/40%Mud	0.870
295.00	90%Water/10%Mud	4.138

Total Length: 357.00 ft Total Volume: 5.008 bbl

Num Fluid Samples: 0

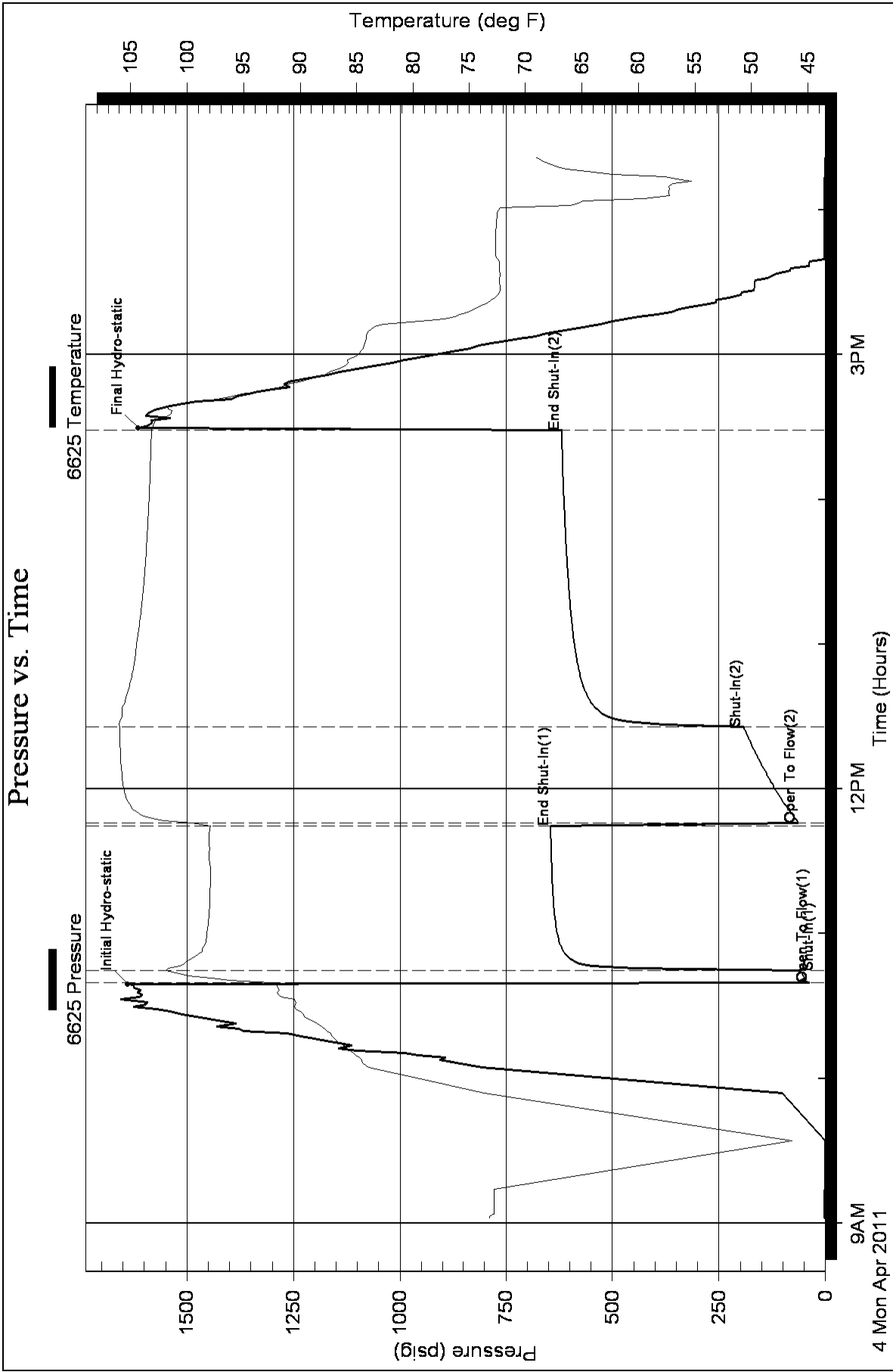
Num Gas Bombs: 0

Serial #:

Laboratory Name:

Laboratory Location:

Recovery Comments:



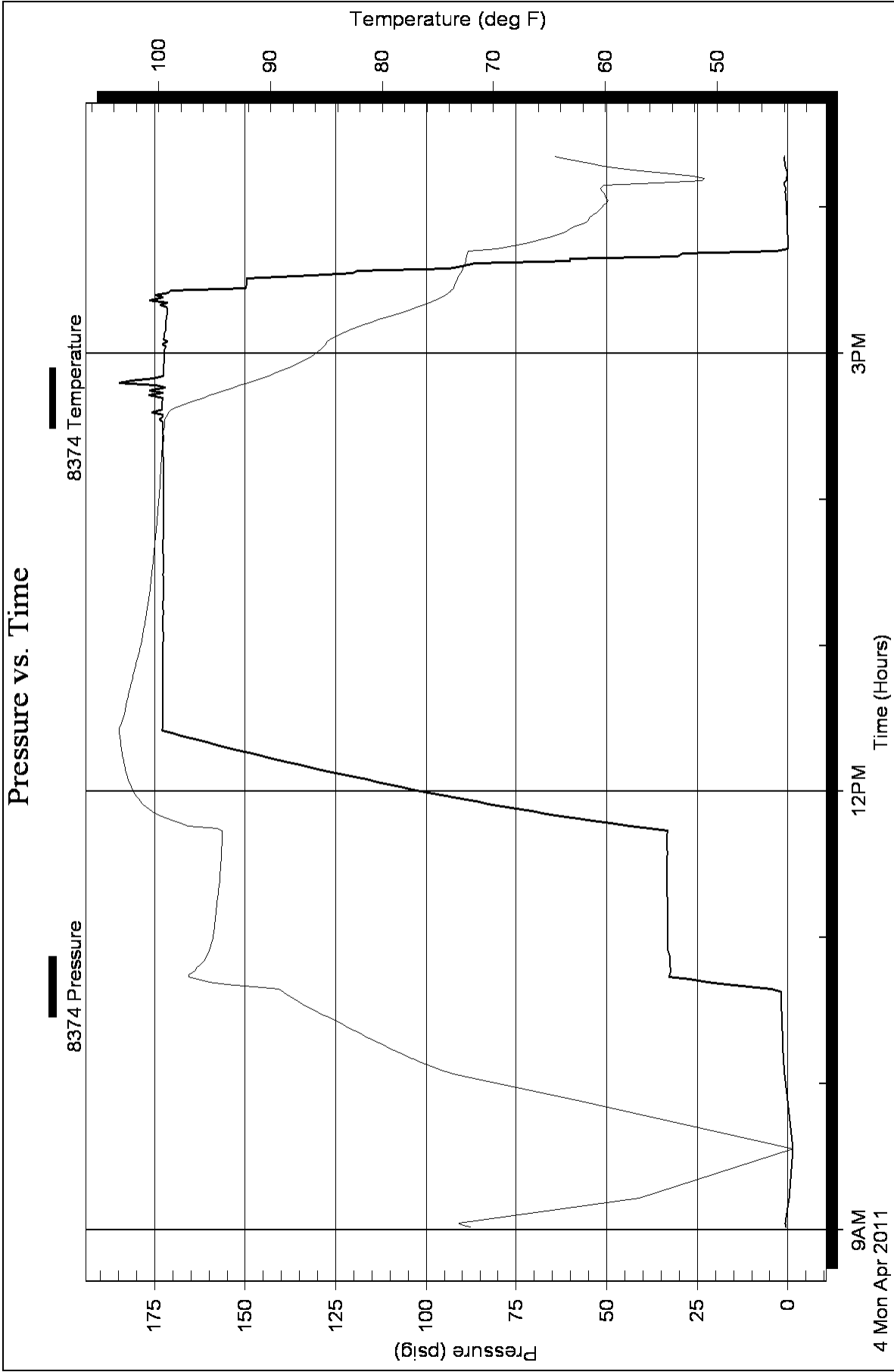
Serial #: 8374

Fluid

Samuel Gary And Associates

26/16S/16W-Rush

DST Test Number: 3



Serial #: 8700

Outside

Samuel Gary And Associates

26/16S/16W-Rush

DST Test Number: 3

