

DRILL STEM TEST REPORT

Prepared For: **Samuel Gary And Associates**

1515 Wynkoop Ste #700
Denver, CO 80202

ATTN: Neal Sharp

26/16S/16W-Rush

Yarmer et al #1-26

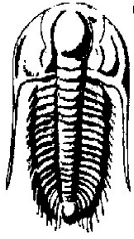
Start Date: 2011.04.05 @ 04:47:21

End Date: 2011.04.05 @ 12:37:51

Job Ticket #: 42789 DST #: 4

Trilobite Testing, Inc
PO Box 362 Hays, KS 67601
ph: 785-625-4778 fax: 785-625-5620

Printed: 2011.04.05 @ 13:01:34 Page 1



TRILOBITE TESTING, INC

DRILL STEM TEST REPORT

Samuel Gary And Associates

Yarmer et al #1-26

1515 Wynkoop Ste #700
Denver, CO 80202

26/16S/16W-Rush

Job Ticket: 42789

DST#: 4

ATTN: Neal Sharp

Test Start: 2011.04.05 @ 04:47:21

GENERAL INFORMATION:

Formation: **Lansing 'H'**

Deviated: No Whipstock: ft (KB)

Time Tool Opened: 06:30:51

Time Test Ended: 12:37:51

Test Type: Conventional Bottom Hole

Tester: Dustin Rash

Unit No: 42

Interval: 3395.00 ft (KB) To 3413.00 ft (KB) (TVD)

Reference Elevations: 1975.00 ft (KB)

Total Depth: 3413.00 ft (KB) (TVD)

1965.00 ft (CF)

Hole Diameter: 7.88 inches Hole Condition: Poor

KB to GR/CF: 10.00 ft

Serial #: 6625 Inside

Press@RunDepth: 85.53 psig @ 3398.00 ft (KB)

Capacity: 8000.00 psig

Start Date: 2011.04.05 End Date: 2011.04.05

Last Calib.: 2011.04.05

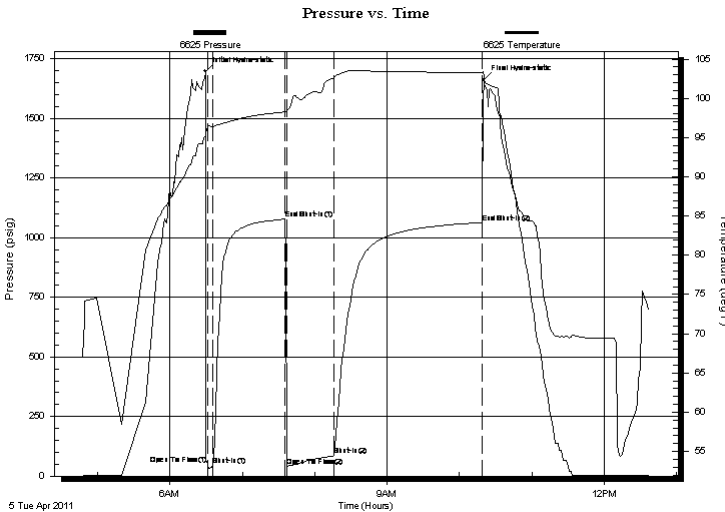
Start Time: 04:47:21 End Time: 12:37:51

Time On Btm: 2011.04.05 @ 06:29:21

Time Off Btm: 2011.04.05 @ 10:20:21

TEST COMMENT: IF-Strong building blow . BOB in 1 minute 30 seconds.
IS- Return @ 3 minutes. Died @ 4 minutes 20 seconds.
FF-Strong building blow . BOB in 20 seconds.
FSI-Return in 30 seconds. Built to 8 inches.

PRESSURE SUMMARY



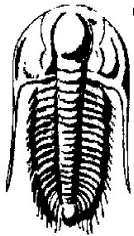
Time (Min.)	Pressure (psig)	Temp (deg F)	Annotation
0	1697.37	95.22	Initial Hydro-static
2	49.56	96.36	Open To Flow (1)
6	43.45	96.41	Shut-In(1)
66	1077.43	98.26	End Shut-In(1)
68	39.28	98.39	Open To Flow (2)
107	85.53	102.63	Shut-In(2)
230	1063.23	103.23	End Shut-In(2)
231	1661.52	102.77	Final Hydro-static

Recovery

Length (ft)	Description	Volume (bbl)
185.00	70%Oil/30%Gas	2.60
0.00	3136' G.I.P.	0.00

Gas Rates

	Choke (inches)	Pressure (psig)	Gas Rate (Mcf/d)



TRILOBITE TESTING, INC

DRILL STEM TEST REPORT

Samuel Gary And Associates
 1515 Wynkoop Ste #700
 Denver, CO 80202
 ATTN: Neal Sharp

Yarmer et al #1-26
26/16S/16W-Rush
 Job Ticket: 42789 **DST#: 4**
 Test Start: 2011.04.05 @ 04:47:21

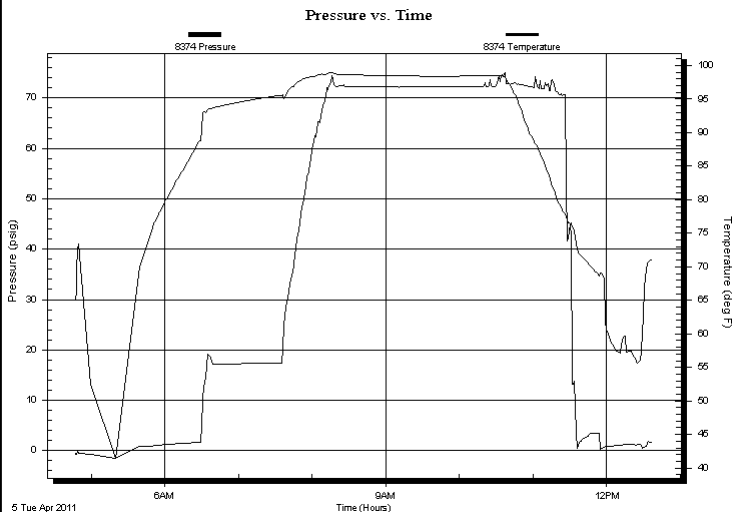
GENERAL INFORMATION:

Formation: **Lansing 'H'**
 Deviated: No Whipstock: ft (KB)
 Time Tool Opened: 06:30:51
 Time Test Ended: 12:37:51
 Test Type: Conventional Bottom Hole
 Tester: Dustin Rash
 Unit No: 42
 Interval: **3395.00 ft (KB) To 3413.00 ft (KB) (TVD)**
 Total Depth: 3413.00 ft (KB) (TVD)
 Reference Elevations: 1975.00 ft (KB)
 1965.00 ft (CF)
 Hole Diameter: 7.88 inches Hole Condition: Poor
 KB to GR/CF: 10.00 ft

Serial #: 8374 Fluid
 Press@RunDepth: psig @ 3366.00 ft (KB) Capacity: 8000.00 psig
 Start Date: 2011.04.05 End Date: 2011.04.05 Last Calib.: 2011.04.05
 Start Time: 04:47:27 End Time: 12:37:27 Time On Btm:
 Time Off Btm:

TEST COMMENT: IF-Strong building blow . BOB in 1 minute 30 seconds.
 IS- Return @ 3 minutes. Died @ 4 minutes 20 seconds.
 FF-Strong building blow . BOB in 20 seconds.
 FSI-Return in 30 seconds. Built to 8 inches.

PRESSURE SUMMARY



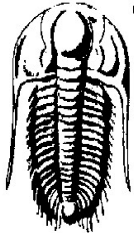
Time (Min.)	Pressure (psig)	Temp (deg F)	Annotation

Recovery

Length (ft)	Description	Volume (bbl)
185.00	70%Oil/30%Gas	2.60
0.00	3136' G.I.P.	0.00

Gas Rates

Choke (inches)	Pressure (psig)	Gas Rate (Mcf/d)



**TRILOBITE
TESTING, INC**

DRILL STEM TEST REPORT

Samuel Gary And Associates

Yarmer et al #1-26

1515 Wynkoop Ste #700
Denver, CO 80202

26/16S/16W-Rush

Job Ticket: 42789

DST#: 4

ATTN: Neal Sharp

Test Start: 2011.04.05 @ 04:47:21

GENERAL INFORMATION:

Formation: **Lansing 'H'**

Deviated: No Whipstock: ft (KB)

Time Tool Opened: 06:30:51

Time Test Ended: 12:37:51

Test Type: Conventional Bottom Hole

Tester: Dustin Rash

Unit No: 42

Interval: 3395.00 ft (KB) To 3413.00 ft (KB) (TVD)

Reference Elevations: 1975.00 ft (KB)

Total Depth: 3413.00 ft (KB) (TVD)

1965.00 ft (CF)

Hole Diameter: 7.88 inches Hole Condition: Poor

KB to GR/CF: 10.00 ft

Serial #: 8700 Outside

Press@RunDepth: psig @ 3398.00 ft (KB)

Capacity: 8000.00 psig

Start Date: 2011.04.05

End Date: 2011.04.05

Last Calib.: 2011.04.05

Start Time: 04:47:40

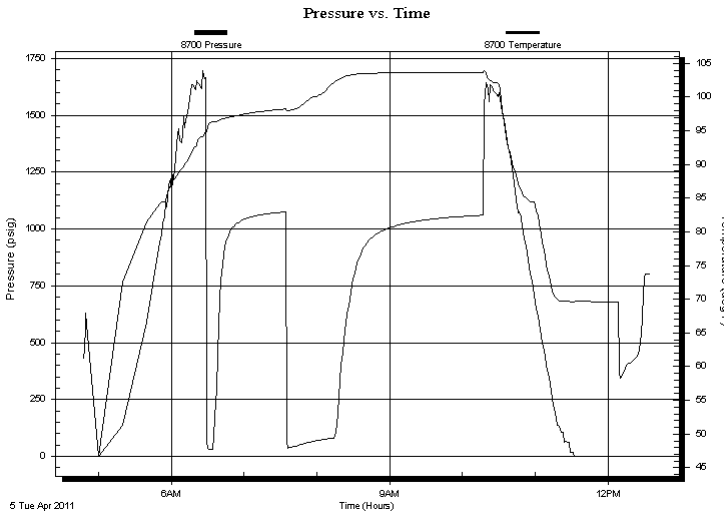
End Time: 12:35:40

Time On Btm:

Time Off Btm:

TEST COMMENT: IF-Strong building blow . BOB in 1 minute 30 seconds.
IS- Return @ 3 minutes. Died @ 4 minutes 20 seconds.
FF-Strong building blow . BOB in 20 seconds.
FSI-Return in 30 seconds. Built to 8 inches.

PRESSURE SUMMARY



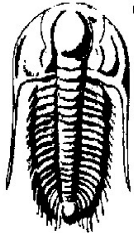
Time (Min.)	Pressure (psig)	Temp (deg F)	Annotation

Recovery

Length (ft)	Description	Volume (bbl)
185.00	70%Oil/30%Gas	2.60
0.00	3136' G.I.P.	0.00

Gas Rates

Choke (inches)	Pressure (psig)	Gas Rate (Mcf/d)



**TRILOBITE
TESTING, INC**

DRILL STEM TEST REPORT

TOOL DIAGRAM

Samuel Gary And Associates

Yarmer et al #1-26

1515 Wynkoop Ste #700
Denver, CO 80202

26/16S/16W-Rush

Job Ticket: 42789

DST#: 4

ATTN: Neal Sharp

Test Start: 2011.04.05 @ 04:47:21

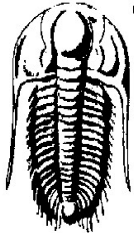
Tool Information

Drill Pipe:	Length: 3384.00 ft	Diameter: 3.80 inches	Volume: 47.47 bbl	Tool Weight:	3000.00 lb
Heavy Wt. Pipe:	Length: 0.00 ft	Diameter: 2.70 inches	Volume: 0.00 bbl	Weight set on Packer:	24000.00 lb
Drill Collar:	Length: 0.00 ft	Diameter: 2.25 inches	Volume: 0.00 bbl	Weight to Pull Loose:	2000.00 lb
			<u>Total Volume: 47.47 bbl</u>	Tool Chased	0.00 ft
Drill Pipe Above KB:	18.00 ft			String Weight: Initial	48000.00 lb
Depth to Top Packer:	3395.00 ft			Final	50000.00 lb
Depth to Bottom Packer:	ft				
Interval between Packers:	18.00 ft				
Tool Length:	47.00 ft				
Number of Packers:	2	Diameter: 6.75 inches			
Tool Comments:					

Tool Description

Tool Description	Length (ft)	Serial No.	Position	Depth (ft)	Accum. Lengths
Recorder	0.00	8374	Fluid	3366.00	
Change Over Sub	1.00			3367.00	
Shut In Tool	5.00			3372.00	
Sampler	2.00			3374.00	
Hydraulic tool	5.00			3379.00	
Jars	5.00			3384.00	
Safety Joint	2.00			3386.00	
Packer	5.00			3391.00	29.00 Bottom Of Top Packer
Packer	4.00			3395.00	
Stubb	1.00			3396.00	
Perforations	2.00			3398.00	
Recorder	0.00	6625	Inside	3398.00	
Recorder	0.00	8700	Outside	3398.00	
Perforations	12.00			3410.00	
Bullnose	3.00			3413.00	18.00 Bottom Packers & Anchor

Total Tool Length: 47.00



TRILOBITE
TESTING, INC

DRILL STEM TEST REPORT

FLUID SUMMARY

Samuel Gary And Associates

Yarmer et al #1-26

1515 Wynkoop Ste #700
Denver, CO 80202

26/16S/16W-Rush

Job Ticket: 42789

DST#: 4

ATTN: Neal Sharp

Test Start: 2011.04.05 @ 04:47:21

Mud and Cushion Information

Mud Type: Gel Chem

Cushion Type:

Oil API:

37 deg API

Mud Weight: 9.00 lb/gal

Cushion Length:

ft

Water Salinity:

ppm

Viscosity: 49.00 sec/qt

Cushion Volume:

bbbl

Water Loss: 8.78 in³

Gas Cushion Type:

Resistivity: ohm.m

Gas Cushion Pressure:

psig

Salinity: 4900.00 ppm

Filter Cake: inches

Recovery Information

Recovery Table

Length ft	Description	Volume bbl
185.00	70%Oil/30%Gas	2.595
0.00	3136' G.I.P.	0.000

Total Length: 185.00 ft Total Volume: 2.595 bbl

Num Fluid Samples: 0

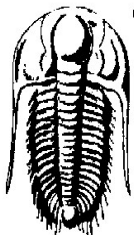
Num Gas Bombs: 0

Serial #:

Laboratory Name:

Laboratory Location:

Recovery Comments:



**TRILOBITE
TESTING, INC.**

DRILL STEM TEST REPORT

GAS RATES

Samuel Gary And Associates

Yarmer et al #1-26

1515 Wynkoop Ste #700
Denver, CO 80202

26/16S/16W-Rush

Job Ticket: 42789

DST#: 4

ATTN: Neal Sharp

Test Start: 2011.04.05 @ 04:47:21

Gas Rates Information

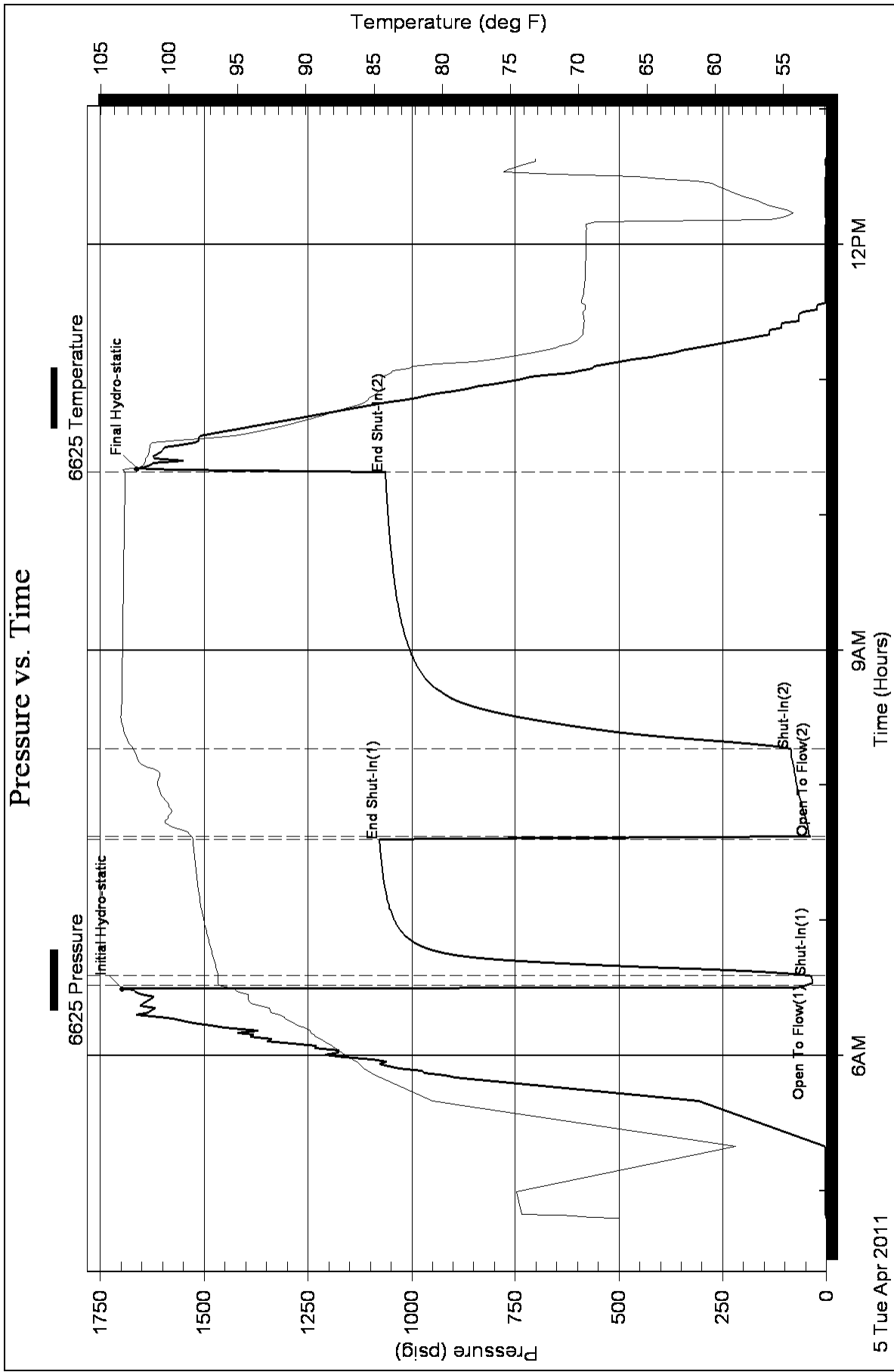
Temperature: 59 deg C

Relative Density: 0.65

Z Factor: 0.8

Gas Rates Table

Flow Period	Elapsed Time	Choke (mm)	Pressure (kPaa)	Gas Rate (m ³ /d)
		0.00	0.00	0.00



Pressure vs. Time

