



**TRILOBITE
TESTING, INC**

DRILL STEM TEST REPORT

Samuel Gary And Associates

Yarmer et al #1-26

1515 Wynkoop Ste #700
Denver, CO 80202

26/16S/16W-Rush

Job Ticket: 42790

DST#: 5

ATTN: Neal Sharp

Test Start: 2011.04.05 @ 20:32:42

GENERAL INFORMATION:

Formation: **LKC "I-J"**

Deviated: No Whipstock: ft (KB)

Time Tool Opened: 21:49:42

Time Test Ended: 04:26:12

Test Type: Conventional Bottom Hole

Tester: Dustin Rash

Unit No: 42

Interval: 3416.00 ft (KB) To 3448.00 ft (KB) (TVD)

Reference Elevations: 1975.00 ft (KB)

Total Depth: 3448.00 ft (KB) (TVD)

1965.00 ft (CF)

Hole Diameter: 7.88 inches Hole Condition: Poor

KB to GR/CF: 10.00 ft

Serial #: 6625 Inside

Press @ Run Depth: 138.92 psig @ 3419.00 ft (KB)

Capacity: 8000.00 psig

Start Date: 2011.04.05

End Date:

2011.04.06

Last Calib.:

2011.04.06

Start Time:

20:32:47

End Time:

04:26:11

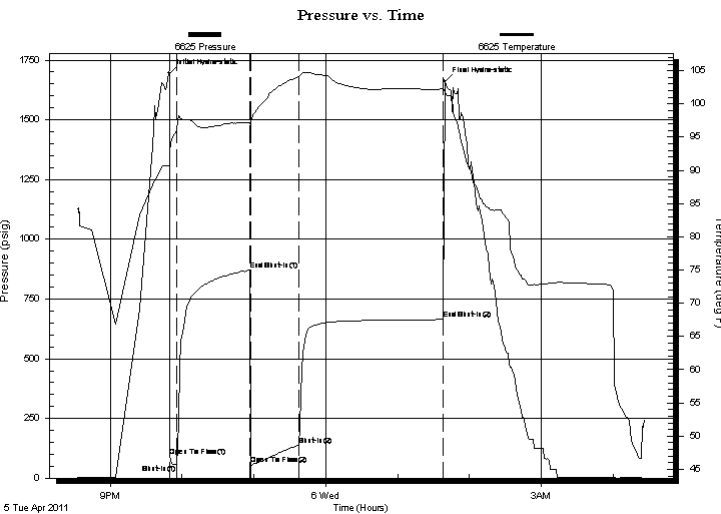
Time On Btm:

2011.04.05 @ 21:49:12

Time Off Btm:

2011.04.06 @ 01:39:12

TEST COMMENT: IF-Strong building blow . BOB in 30 seconds.
ISI-Return @ 45 seconds. Built to 3 inches.
FF-Strong building blow . BOB in 20 seconds. GTS in 36 minutes. TSTM
FSI-Return @ 15 seconds. BOB in 33 minute



PRESSURE SUMMARY

Time (Min.)	Pressure (psig)	Temp (deg F)	Annotation
0	1694.72	90.71	Initial Hydro-static
1	90.46	92.77	Open To Flow (1)
6	57.15	96.13	Shut-In(1)
67	870.73	97.21	End Shut-In(1)
69	57.60	97.14	Open To Flow (2)
108	138.92	104.04	Shut-In(2)
229	664.14	102.23	End Shut-In(2)
230	1661.96	101.91	Final Hydro-static

Recovery

Length (ft)	Description	Volume (bbl)
62.00	40%Mud/30%Oil/30%Gas	0.87
278.00	70%Oil/30%Gas	3.90
0.00	3074' G.I.P.	0.00

Gas Rates

Choke (inches)	Pressure (psig)	Gas Rate (Mcf/d)



**TRILOBITE
TESTING, INC**

DRILL STEM TEST REPORT

FLUID SUMMARY

Samuel Gary And Associates

Yarmer et al #1-26

1515 Wynkoop Ste #700
Denver, CO 80202

26/16S/16W-Rush

Job Ticket: 42790

DST#: 5

ATTN: Neal Sharp

Test Start: 2011.04.05 @ 20:32:42

Mud and Cushion Information

Mud Type: Gel Chem

Cushion Type:

Oil API:

38 deg API

Mud Weight: 9.00 lb/gal

Cushion Length:

ft

Water Salinity:

ppm

Viscosity: 48.00 sec/qt

Cushion Volume:

bbbl

Water Loss: 9.18 in³

Gas Cushion Type:

Resistivity: ohm.m

Gas Cushion Pressure:

psig

Salinity: 5200.00 ppm

Filter Cake: inches

Recovery Information

Recovery Table

Length ft	Description	Volume bbl
62.00	40%Mud/30%Oil/30%Gas	0.870
278.00	70%Oil/30%Gas	3.900
0.00	3074' G.I.P.	0.000

Total Length: 340.00 ft

Total Volume: 4.770 bbl

Num Fluid Samples: 0

Num Gas Bombs: 1

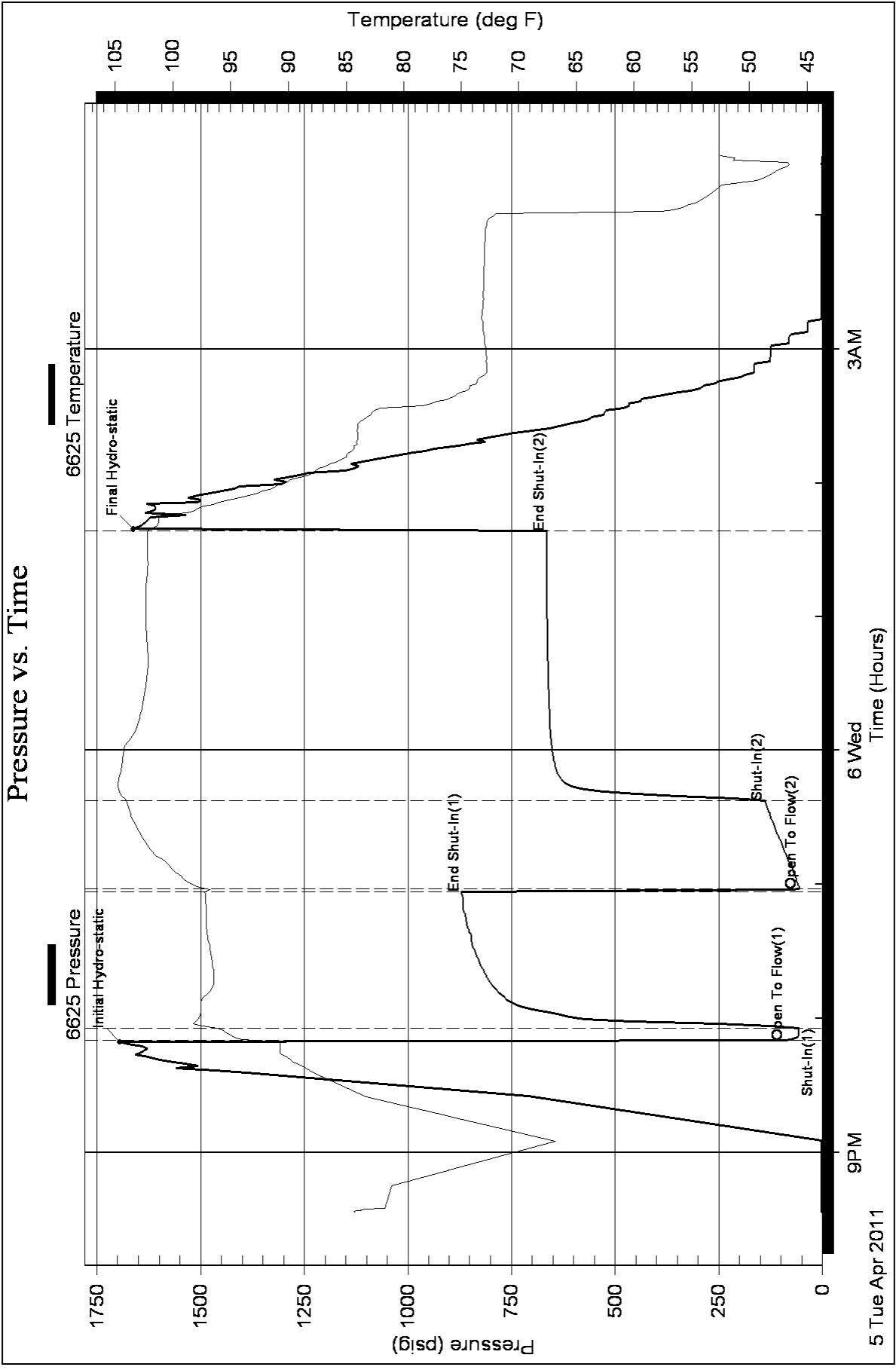
Serial #:

Laboratory Name: Caraway

Laboratory Location: Liberal, KS

Recovery Comments:

Pressure vs. Time



Serial #: 8374

Fluid

Samuel Gary And Associates

26/16S/16W-Rush

DST Test Number: 5

Pressure vs. Time

