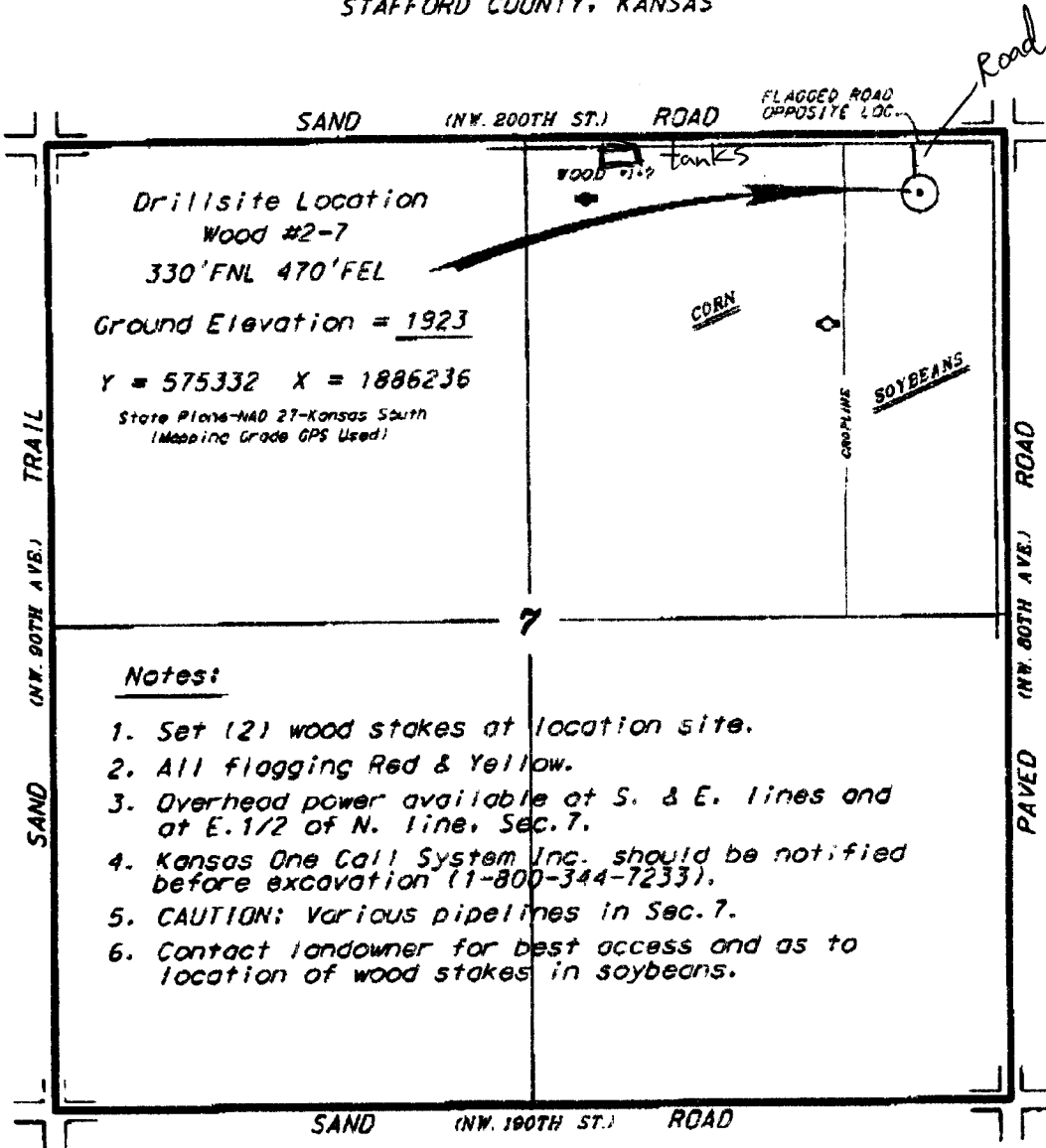


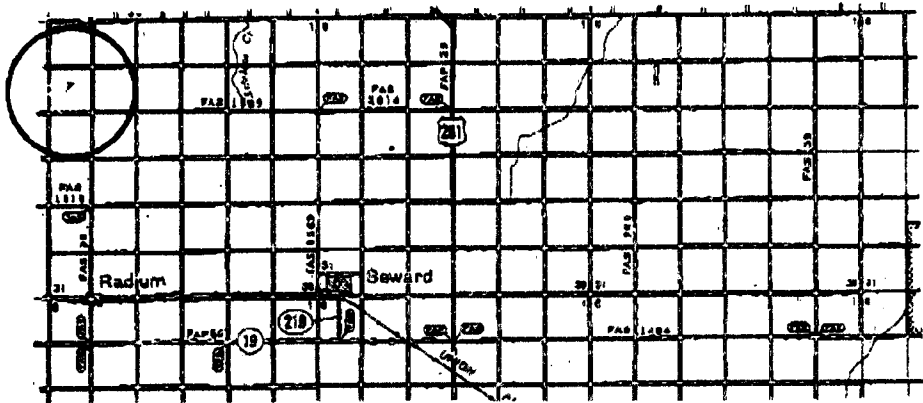
**HESS OIL COMPANY
WOOD LEASE
NE. 1/4, SECTION 7, T21S, R14W
STAFFORD COUNTY, KANSAS**



ingress and egress to location as shown on this
 plat is for usage only and may not be legally
 opened for public use. Contact landowner,
 tenant and county road department for access.

Notes:

1. Set (2) wood stakes at location site.
2. All flagging Red & Yellow.
3. Overhead power available at S. & E. lines and at E. 1/2 of N. line, Sec. 7.
4. Kansas One Call System Inc. should be notified before excavation (1-800-344-7233).
5. CAUTION: Various pipelines in Sec. 7.
6. Contact landowner for best access and as to location of wood stakes in soybeans.



• Contouring data is based upon the best maps and photographs available to us and upon a regular section of land containing 160 acres.
 • Approximate section lines were determined using the normal standard of care of oilfield surveyors practicing in the state of Kansas. The section corners, when available, are the precise section lines, and the exact location of the drillsite location in the section is not guaranteed. Therefore, the Operator securing this service and operating this plat and all other parties relying thereon agree to hold Central Kansas Oilfield Services, Inc., its officers and employees harmless from all losses, costs and expenses and said entities released from any liability from incidental or consequential damages.
 • Elevations derived from National Geodetic Vertical Datum.

Date July 27, 2011