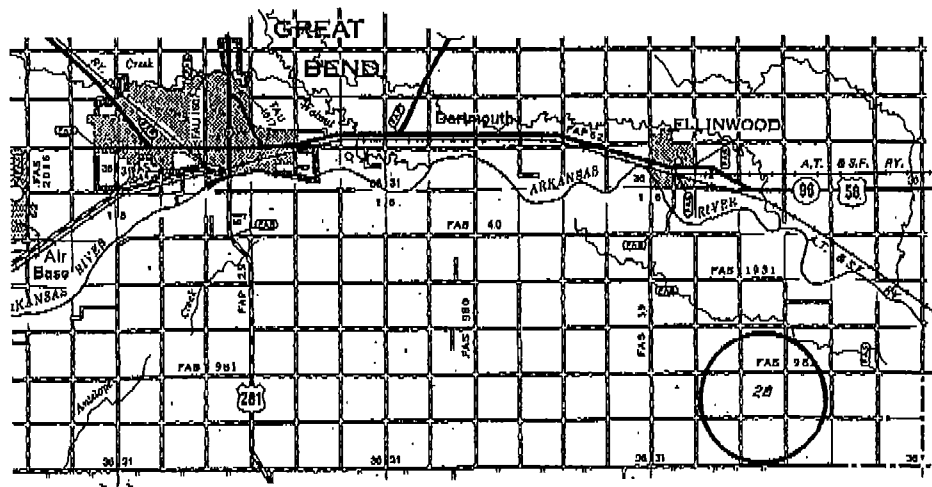
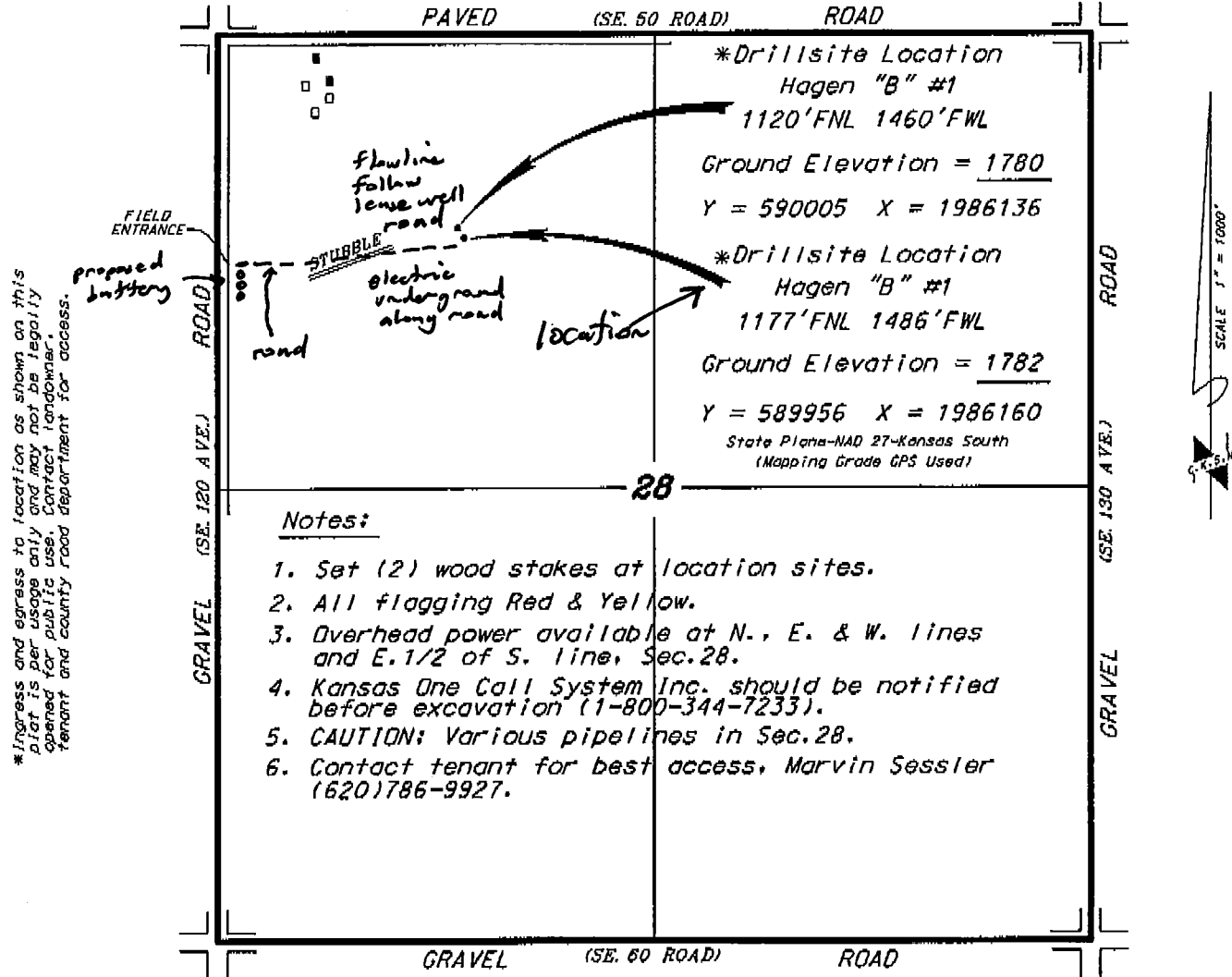


VESS OIL CORPORATION
HAGEN LEASE
NW.1/4, SECTION 28, T20S, R11W
BARTON COUNTY, KANSAS



* Controlling data is based upon the best maps and photographs available to us and upon a regular section of land containing 640 acres.
* Approximate section lines were determined using the normal standard of care of a professional surveyor practicing in the state of Kansas. The section corners, which establish the precise section lines, were not necessarily located, and the exact location of the drillsite location in the section is not guaranteed. Therefore, the operator securing this service and accepting this plat and all other parties relying thereon agree to hold Central Kansas Oilfield Services, Inc., its officers and employees harmless from all losses, costs and expenses and hold harmless released from any liability from incidental or consequential damages.
* Elevations derived from National Geodetic Vertical Datum.

Date July 25, 2011