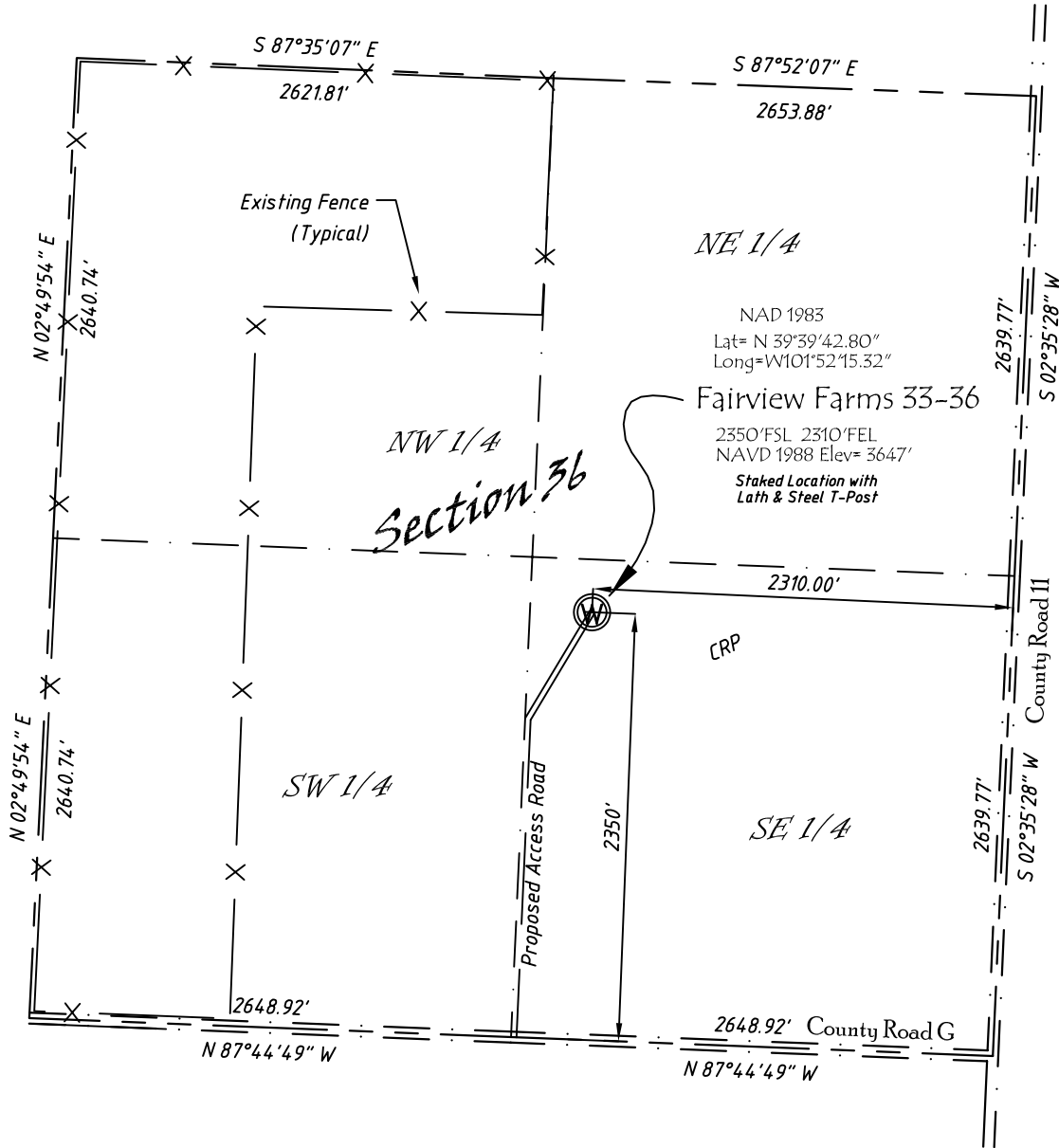


Well Location Map

Fairview Farms 33-36

NW 1/4, SE 1/4, Section 36, T4S, R41W, 6th P.M. Cheyenne County, Kansas
 2350' FSL - 2310' FEL Elev=3647'



NAD 1983
 Lat= N 39°39'42.80"
 Long=W101°52'15.32"
 Fairview Farms 33-36
 2350'FSL 2310'FEL
 NAVD 1988 Elev= 3647'
 Staked Location with
 Lath & Steel T-Post

Copyright © 2011

Directions:

From the Intersection of the River Road & Hwy 36 West of St. Francis, KS,
 Go Southwesterly on River Road 3.25 miles to County Road 11, then go S
 5.5 miles to County Road G, then W 0.5 miles, Then N 2350' to Staked location.

This Drawing is for Construction Purposes Only

Noble Energy, Inc.		
DRAWN GP	DATE 7/28/11	Section 36
FB B76 P22	EQ HjPro	T4S, R41W, 6th P.M. Cheyenne County, KS
SCALE 1"=1000'	SHEET 1 of 1	PROJECT NO. 1570.195

