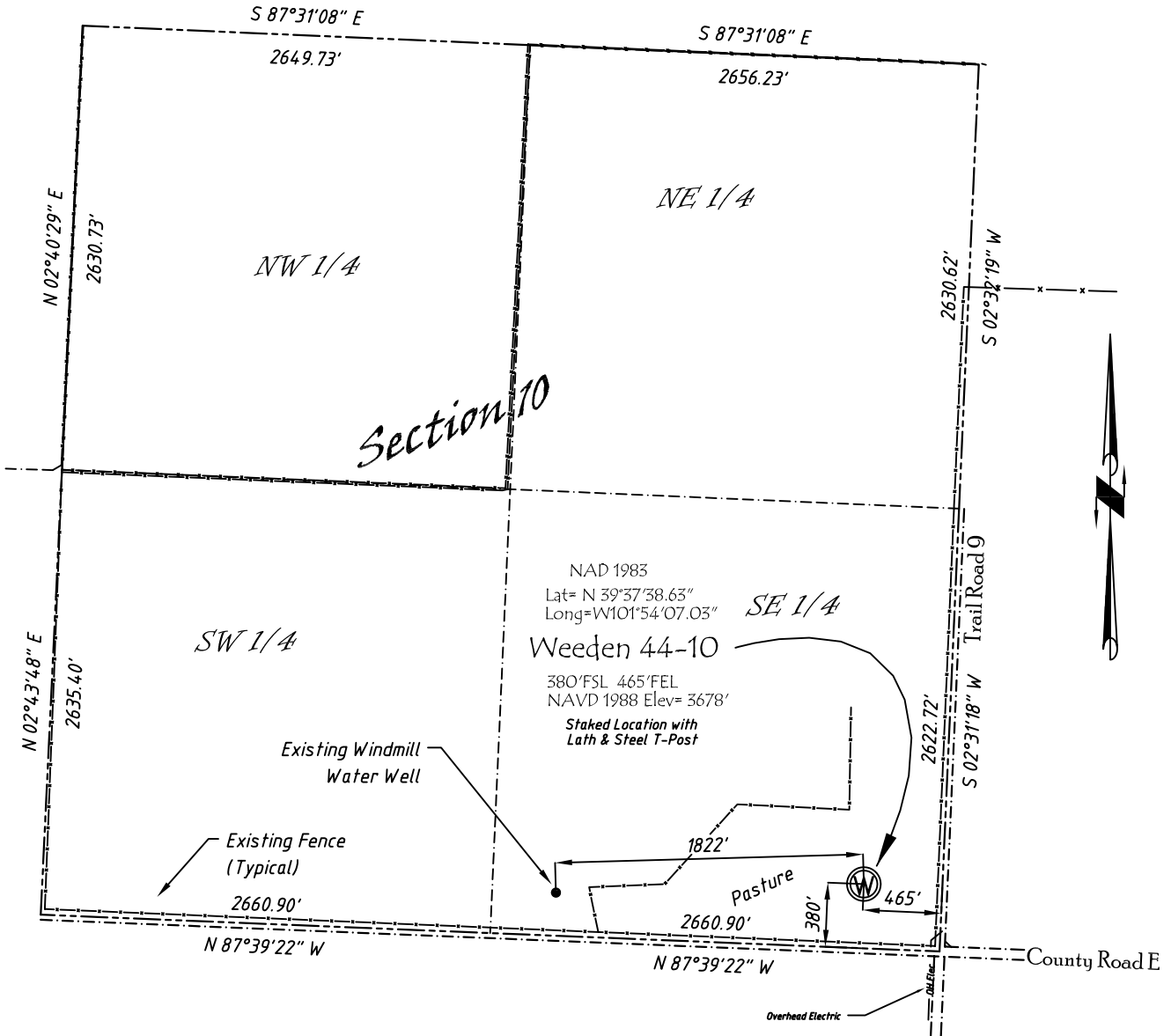


Well Location Map

Weeden 44-10

SE 1/4, SE 1/4, Section 10, T5S, R41W, 6th P.M. Cheyenne County, Kansas
 380' FSL - 465' FEL Elev=3678'



Copyright © 2011

Directions:

From the Intersection of the River Road & Hwy 36 West of St. Francis, KS,
 Go Southwesterly on River Road 3.25 miles to County Road 11, then go S
 7.5 miles to County Road E, then W 2.1 miles, Then N 380' to Staked location.

This Drawing is for Construction Purposes Only

Noble Energy, Inc.		
DRAW GP	DATE 7/19/11	Section 10 T5S, R41W, 6th P.M. Cheyenne County, KS
FB B76 P8	EQ HijPro	
SCALE 1"=1000'	SHEET 1 of 1	PROJECT NO. 1570.196



402 Walnut
 Kanorado, KS
 785/399/2551