

GEOLOGIST'S REPORT

DRILLING TIME AND SAMPLE LOG

BACH OIL PRODUCTION

WELL: O'NIELL A #3

LOC.: 1450' FNL & 1400 FWL
SEC. 23-1-18W
PHILLIPS COUNTY, KANSAS
API: 15-147-20645-00-00

ELEVATION

KB: 2188'
GL: 2183'
LOG MEASURED
FROM: KB

SURFACE CASING

8 5/8" surface csg.
Set @218' KB.
Cem. w/150sx Common,
3% CC, 2% Gel.

PRODUCTION CASING

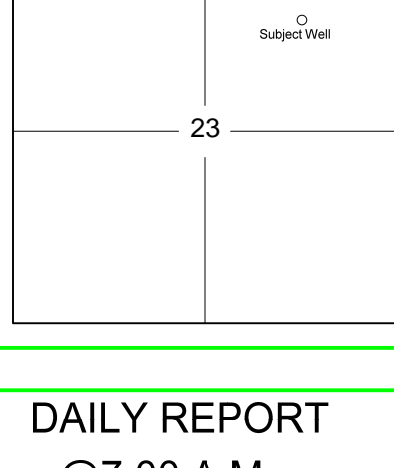
5 1/2" Production set

WELL LOG SURVEYS

RAG

ELECTRIC LOG TOPS

FORMATION	DEPTH	DATUM	POSITION
Stone Corral	1797	+391	N/A
Base Stone Corral	1803	+385	N/A
Topeka	3124	-936	N/A
Heebner	3344	-1156	+41
Toronto	3372	-1184	+40
Lansing	3388	-1200	+42
Base Kansas City	3608	-1420	N/A



REFERENCE WELL:

M&B Enterprises
#1 O'Niell
NW NW NW
23-1-18W
2103 KB

REMARKS AND RECOMMENDATIONS

Due to the proximity of this well to existing production and faulting to the east production casing was run by the operator to further test the shows in this well for commercial production.

Respectfully submitted,

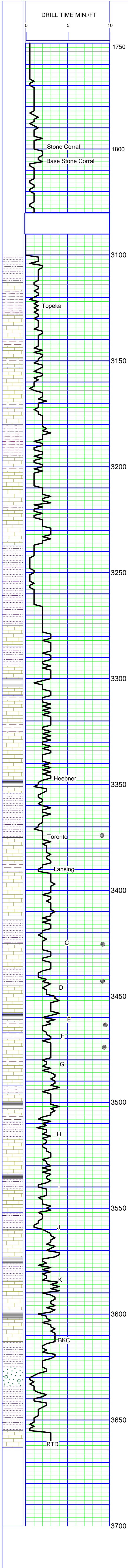
Robert J. Petersen

Robert Petersen

DAILY REPORT

@7:00 A.M.

5-23-11 MIRU, SPUD
5-24-11 380' DRILLING
5-25-11 2320' DRILLING
5-26-11 3171' DRILLING
5-27-11 3660' RTD CONDITIONING
HOLE FOR LOG.



SAMPLE DESCRIPTION

LS; Cream/lt gray, fine crystalline, cherty, sl dolo, foss, chalky (50)
Vis 69/Wt 8.6/LCM 2#

SH; Gray (trace 60)

LS; Cream/gray, fine crystalline, foss, chalky + SH; Gray (70)

LS; Cream/gray/tan, fine crystalline to dense, foss, chalky, cherty (80)
Vis 64/Wt 8.6/LCM 2#

SH; Gray (90)

LS; Lt gray, fine crystalline, foss, w/fair fossil-cast por + LS: Cream, fine crystalline, very chalky (3200)
 SH; Gray(10)

LS; Cream/lt gray, fine crystalline, foss, chalky, trace stain (10)

LS; Cream, fine crystalline, chalky, soft (20)
 SH; Black (30)

LS; Cream, fine crystalline, foss, chalky, cherty (40)

trace stain, dead oil flakes (50-60)
 SH; Black (70)
 SH; Red (70)

SS; Brown/gray, fine grained, friable, calc, trace dead oil flake (70)

SH; Red, silty + SH; Gray, sandy (80)

LS; Cream/lt gray, fine crystalline, foss, chalky (90)

LS; Cream, fine crystalline, foss, chalky,, trace stain + SH; Red, silty (3300)

LS; Cream/tan, fine crystalline, foss, subgranular w/poor fossilcast por, trace stain (10)
 +SH; Red, silty + SH; Gray, sandy (20)

LS; Cream/lt gray, fine crystalline, foss, chalky (20)

LS; Cream/gray, fine crystalline, foss, chalky + SH; Red, trace SH; Black (30)

SH; Gray, silty-sandy (40)

LS; Cream/tan, fine crystalline, foss, chalky, mealy w/trace dead stain, trace poor fossilcast por, it stain (40)

LS; Cream/lt gray, fine crystalline, foss, c halky, sl dolo (50)

LS; Lt gray, fine crystalline, foss, chalky cherty (60)
 SH; Black (flood @70)
 LS; Tan/lt gray, fine crystalline to dense, foss (70)

SH; Red, silty, sandy + SH; Gray, calcareous + SS; Lt gray, silty (80)

SH; Red/gray, silty-sandy (90)

LS; Cream/white, fine crystalline, foss, sl dol, w/fair fossilcast por, vssfo, lt stain, lt gray/brown stain on dry (90)

LS; Cream, fine crystalline, foss, chalky, cherty, sl dolo (3400)

SH; Red (3400)

LS; Cream, fine crystalline, ool, chalky, sl dolo (10)

LS; Cream, fine crystalline to dense, foss, chalky (20)

SH; Black (30)

SH; Red/gray, silty-sandy (40)

LS; Cream/tan, fine crystalline, foss, cherty, dolomitic w/poor fossilcast por, odor, sfo, patchy to full medium brow stain on dry (40)

LS; Cream, fine crystalline, foss, increase dolo, increase sfo, odor, fair to good fossil cast por, gas bubbles, full sat on dry (50)

SH; Red/gray, silty (50)

LS; Cream, fine crystalline, foss-subgranular, cherty w/fair intergran vug por, sfo, odor (60)

LS; Cream/lt gray, fine crystalline to dense, sl dolo, cherty, trace vug por, sfo, odor (70)

SH; Black (80)
 SH; Red (80)
 LS; Cream/white, fine crystalline, oolitic-granular, fair inter-ool/fossil-cast por, sfo, odor, brown stain on dry (80)

LS; Cream, fine crystalline, foss, chalky (90)

LS; Gray/red (3500)

LS; Cream/tan, fine crystalline to dense, chalky (10)

trace stain, vssfo (10-20)

LS; Gray/brown, fine crystalline, fossil mottled (20)

SH; Black (20)

SH; Red (20)

LS; Cream, fine crystalline, foss, chalky, cherty (blocky/tan/gray)(40)

LS; Gray, fine crystalline, foss, chalky, cherty (50)
 SH; Dark gray (50)

SH; Red (60)

LS; Tan/gray, fine crystalline to dense, subchalky, trace ool-granular w/inter-ool por, trace stain (70)
Vis 60/Wt 9.0/LCM 4#

SH; Red/gray (70)

LS; Cream/tan, fine crystalline to dense, sl foss, trace stain, frac por, nsfo (80)
 SH; Maroon (90)

LS; Cream/fine crystalline to dense, foss, sl dolo, trace stain (90)

SH; Black (90)

LS; Cream, fine crystalline, foss, subchalky, trace stain (3600)

LS; Cream/lt gray, fine crystalline, foss, chalky (10)

sl dol (20)

SH; Black (30)
 SH; Red/gray, silty (30)

LS; Gray, fine crystalline, dolo (40)

SH; Red/gray, silty-sandy + SS; Gray, fine grained, angular, hard + SH; Black (50)

LS; Gray, fine crystalline, foss + LS; Cream, fine crystalline, chalky (60)

SH; Red/gray, silty-sandy (60)
VIS 61/Wt 9.1