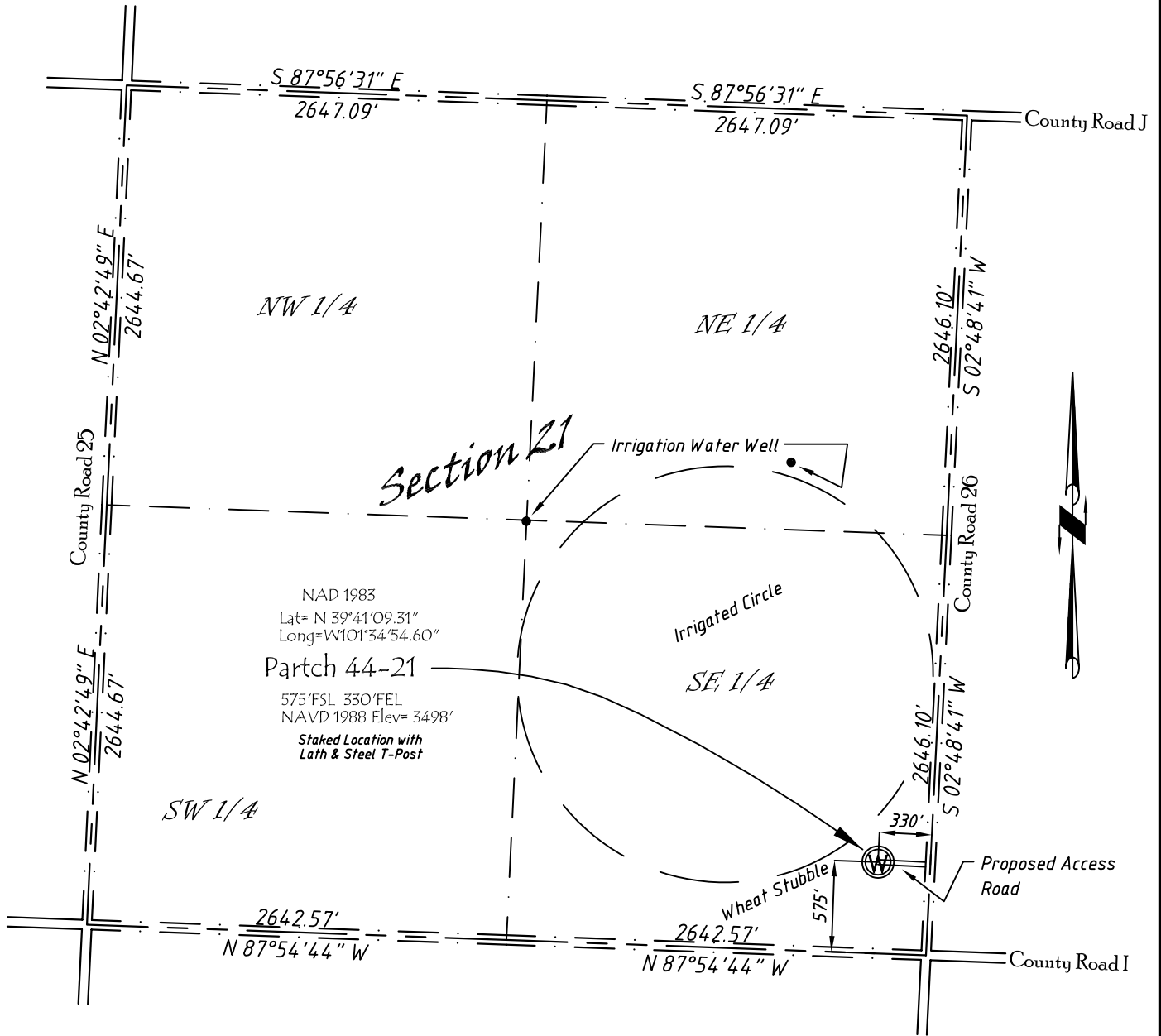


Well Location Map

Partch 44-21

SE 1/4, SE 1/4, Section 21, T4S, R38W, 6th P.M. Cheyenne County, Kansas
 575' FSL - 330' FEL Elev=3498'



NAD 1983
 Lat= N 39°41'09.31"
 Long=W101°34'54.60"
 Partch 44-21
 575'FSL 330'FEL
 NAVD 1988 Elev= 3498'
 Staked Location with
 Lath & Steel T-Post

Copyright © 2011

Directions:

From the Intersection of the County Road 27 & Hwy 36 West of Bird City, KS,
 Go South on County Road 27, 5 miles to County Road I. Then W 1 Mile on
 County Road I to County Road 26. Then N 0.1 Mile Then W 330' to Staked location.

This Drawing is for Construction Purposes Only

Noble Energy, Inc.		
DRAWN GP	DATE 8/1/11	Section 21
FB B76 P22	EQ HijPro	T4S, R38W, 6th P.M. Cheyenne County, KS
SCALE 1"=1000'	SHEET 1 of 1	PROJECT NO. 1570.192

North
Winds
Surveys, Inc.

402 Walnut
Kanorado, KS
785/399/2551