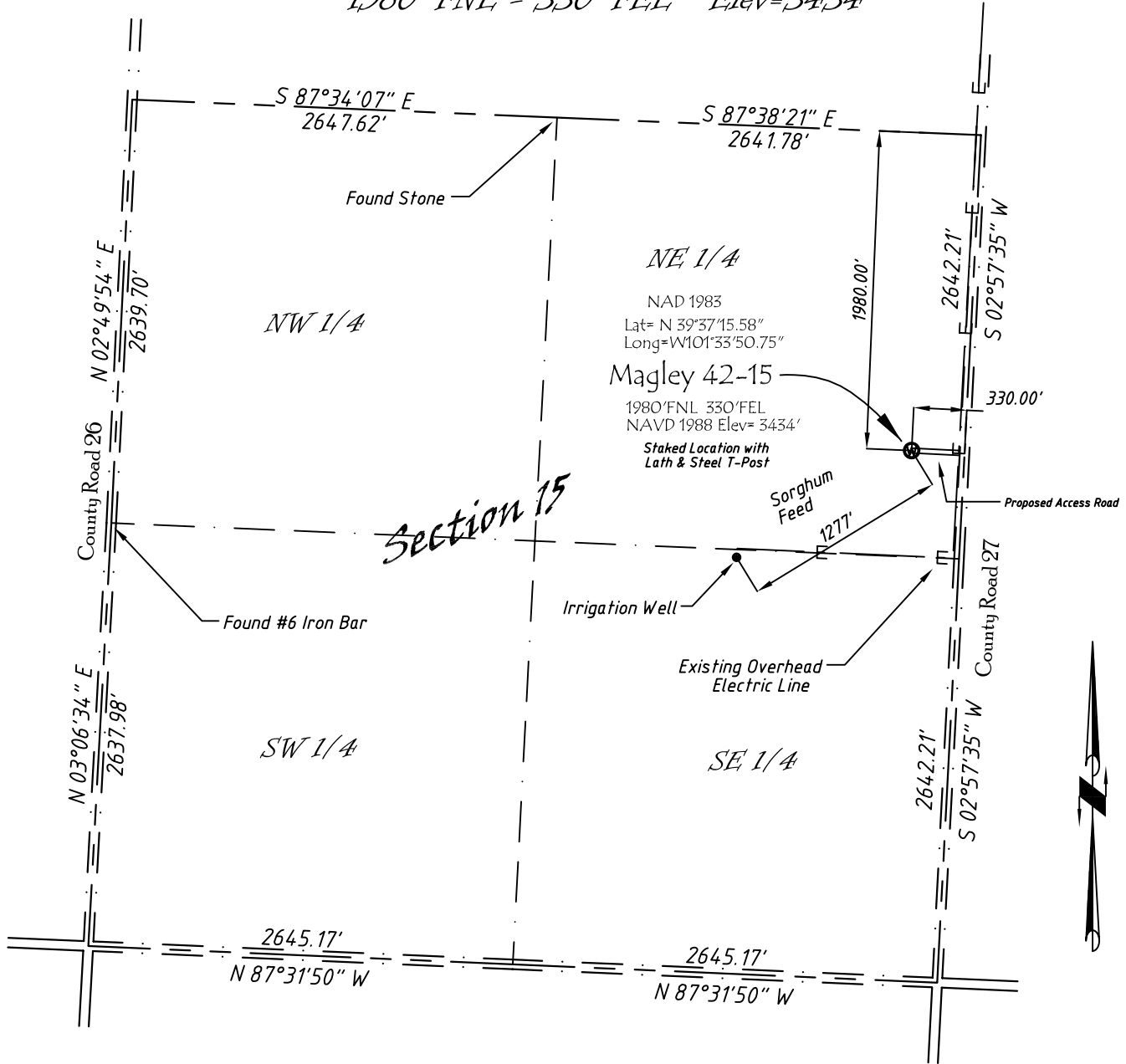


Well Location Map

Magley 42-15

SE 1/4, NE 1/4, Section 15, T5S, R38W, 6th P.M. Cheyenne County, Kansas
 1980' FNL - 330' FEL Elev=3434'



Copyright © 2011

Directions:

From the Intersection of the County Road 27 & Hwy 36 West of Bird City, KS,
 Go South on County Road 27, 9.4 miles Then W 330' to Staked location.

This Drawing is for Construction Purposes Only

| | | |
|---------------------------|------------------------|--|
| Noble Energy, Inc. | | |
| DRAWN GP | DATE 7/28/11 | Section 15 T5S, R38W, 6th P.M. Cheyenne County, KS |
| FB B76 P19 | EQ HjPro | |
| SCALE 1"=1000' | SHEET 1 of 1 | PROJECT NO. 1570.194 |

North
Winds
Surveys, Inc.

402 Walnut
Kanorado, KS
785/399/2551