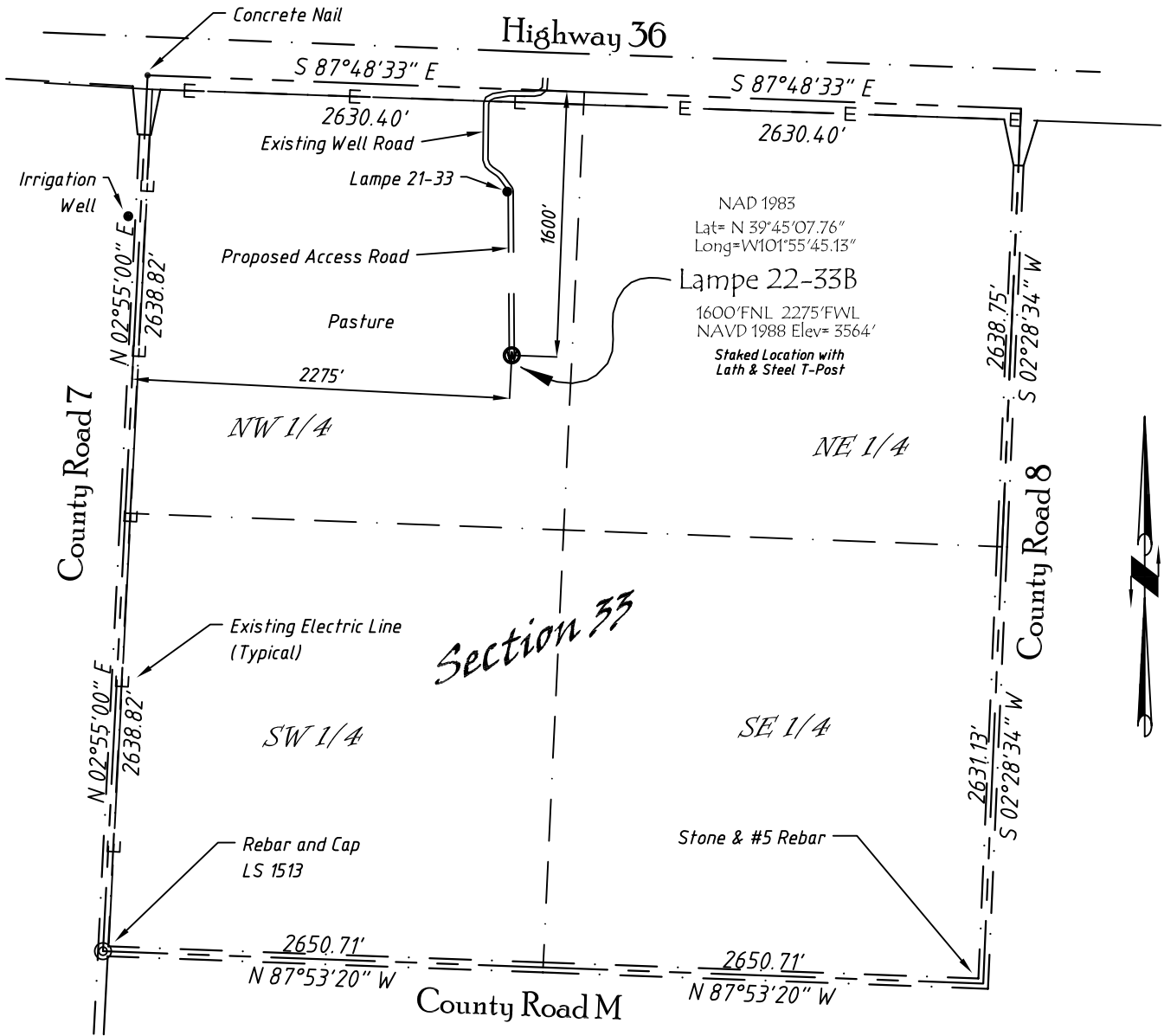


Lampe 22-33B

SE 1/4, NW 1/4, Section 33, T3S, R41W, 6th P.M. Cheyenne County, Kansas
 1600' FNL - 2275' FWL Elev=3564'



Copyright © 2011

Directions:

From St. Francis, KS, go West on Hwy 36 approximately 6.75 miles to Entry to Residence & Existing Well Access Road, then follow Well Access Road Southerly and Westerly approximately 0.2 miles to Lampe 21-33 Then continue southerly approximately 1000 feet to Staked Location.

This Drawing is for Construction Purposes Only

Noble Energy, Inc.		
DRAWN GP	DATE 8/4/11	Section 33 T3S, R41W, 6th P.M. Cheyenne County, KS
FB B76 P27	EQ HjPro	
SCALE 1"=1000'	SHEET 1 of 1	PROJECT NO. 1570.199

North
Winds
Surveys, Inc.

402 Walnut
Kanorado, KS
785/399/2551