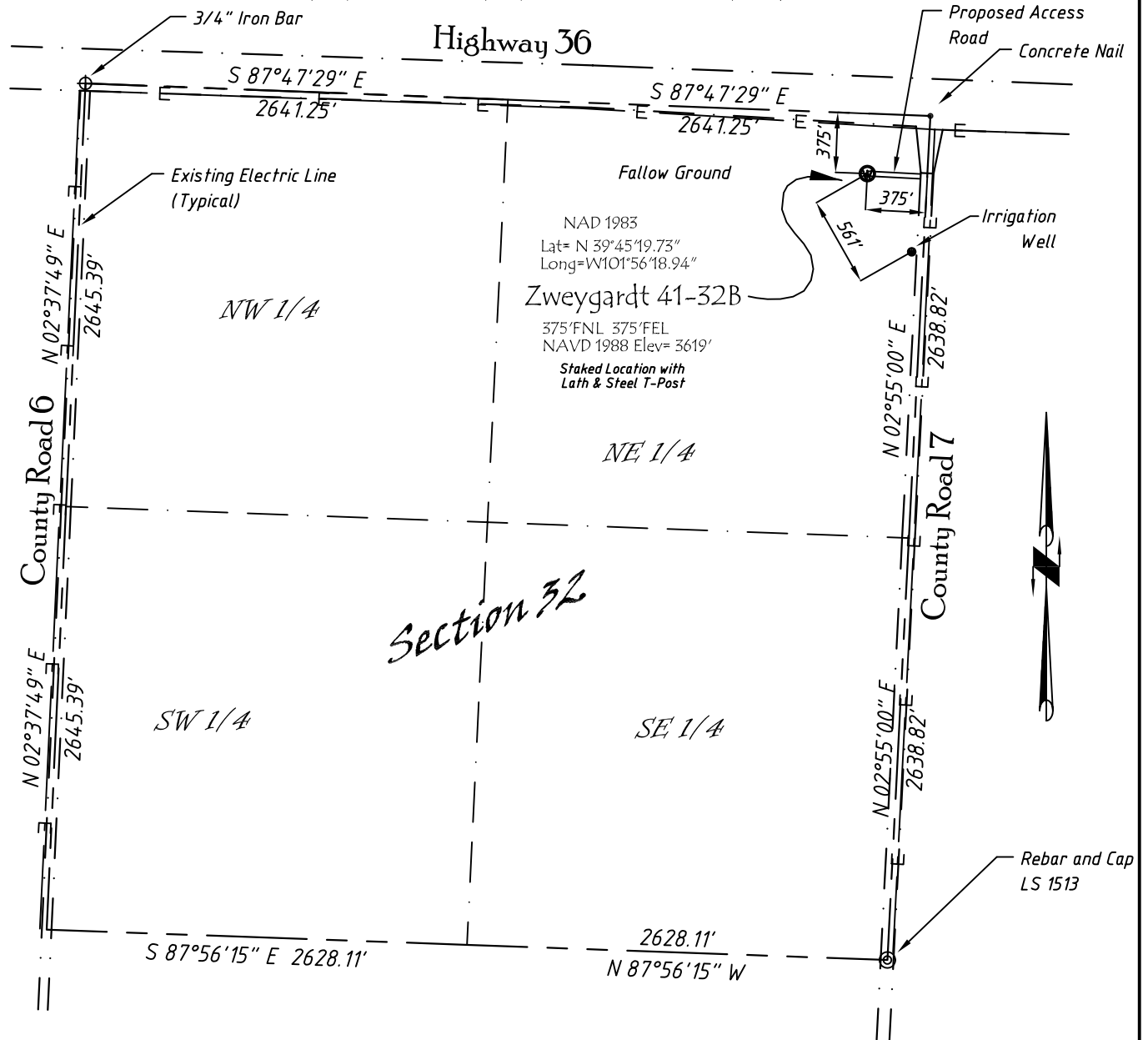


Well Location Map

Zweygardt 41-32B

NE 1/4, NE 1/4, Section 32, T3S, R41W, 6th P.M. Cheyenne County, Kansas
 375' FNL - 375' FEL Elev=3619'



Copyright © 2011

Directions:

From St. Francis, KS, go West on Hwy 36 approximately 7.2 miles to County Road 7. Then South 500 Feet. Then West 375' to Staked Location

This Drawing is for Construction Purposes Only

Noble Energy, Inc.		
DRAWN GP	DATE 8/4/11	Section 32
FB B76 P27	EQ HjPro	T3S, R41W, 6th P.M. Cheyenne County, KS
SCALE 1"=1000'	SHEET 1 of 1	PROJECT NO. 1570.198



402 Walnut
 Kanorado, KS
 785/399/2551