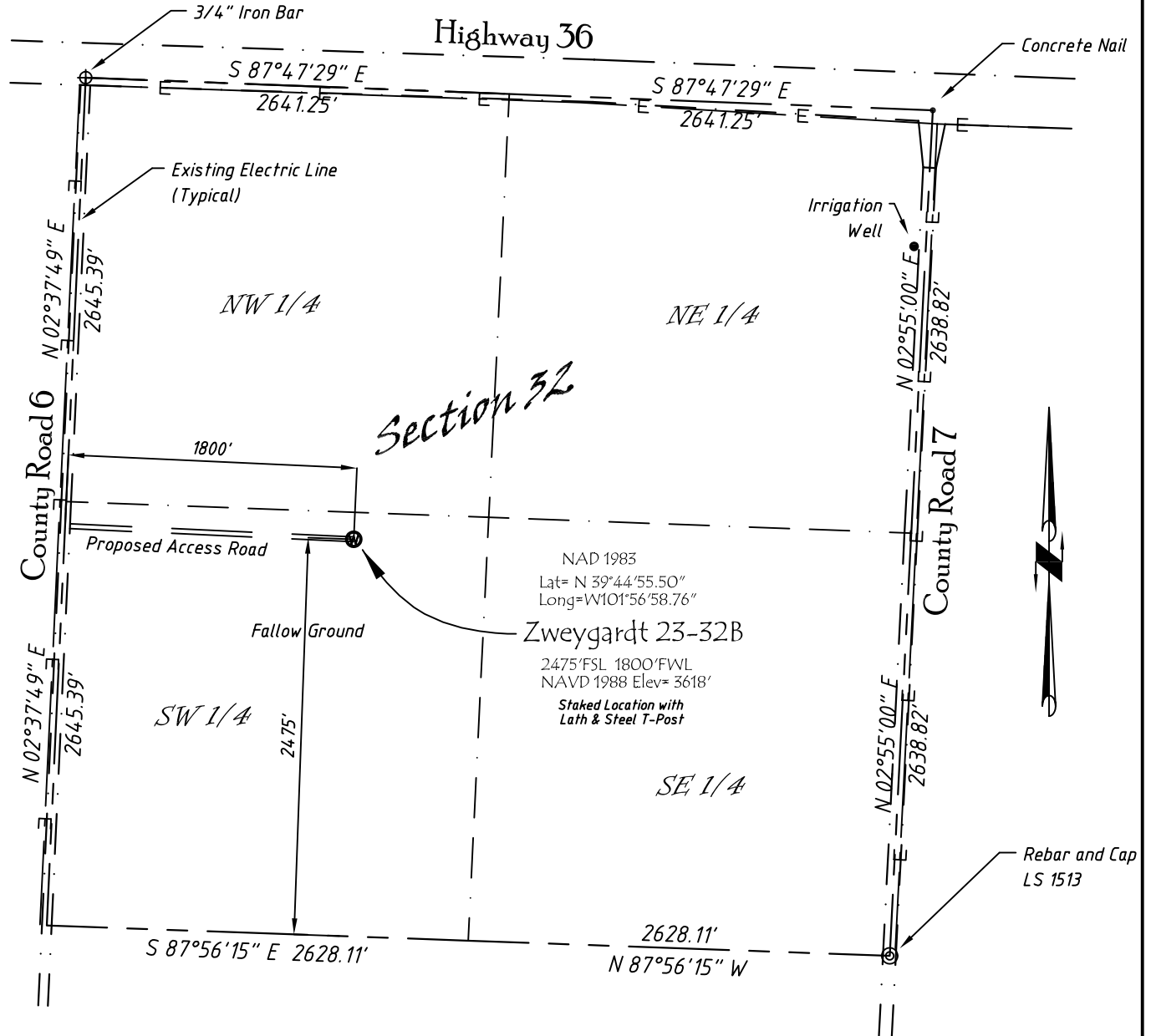


Well Location Map

Zweygardt 23-32B

NE 1/4, SW 1/4, Section 32, T3S, R41W, 6th P.M. Cheyenne County, Kansas
 2475' FSL - 1800' FWL Elev=3618'



Copyright © 2011

Directions:

From St. Francis, KS, go West on Hwy 36 approximately 8.2 miles to County Road 6. Then South 0.6 miles. Then East 1800' to Staked Location

This Drawing is for Construction Purposes Only

| | | |
|--------------------------|------------------------|--|
| Noble Energy, Inc. | | |
| DRAWN GP | DATE 8/4/11 | Section 32 |
| FB B76 P27 | EQ HijPro | T3S, R41W, 6th P.M. Cheyenne County, KS |
| SCALE 1"=1000' | SHEET 1 of 1 | PROJECT NO. 1570.197 |

North
Winds
Surveys, Inc.

402 Walnut
Kanorado, KS
785/399/2551