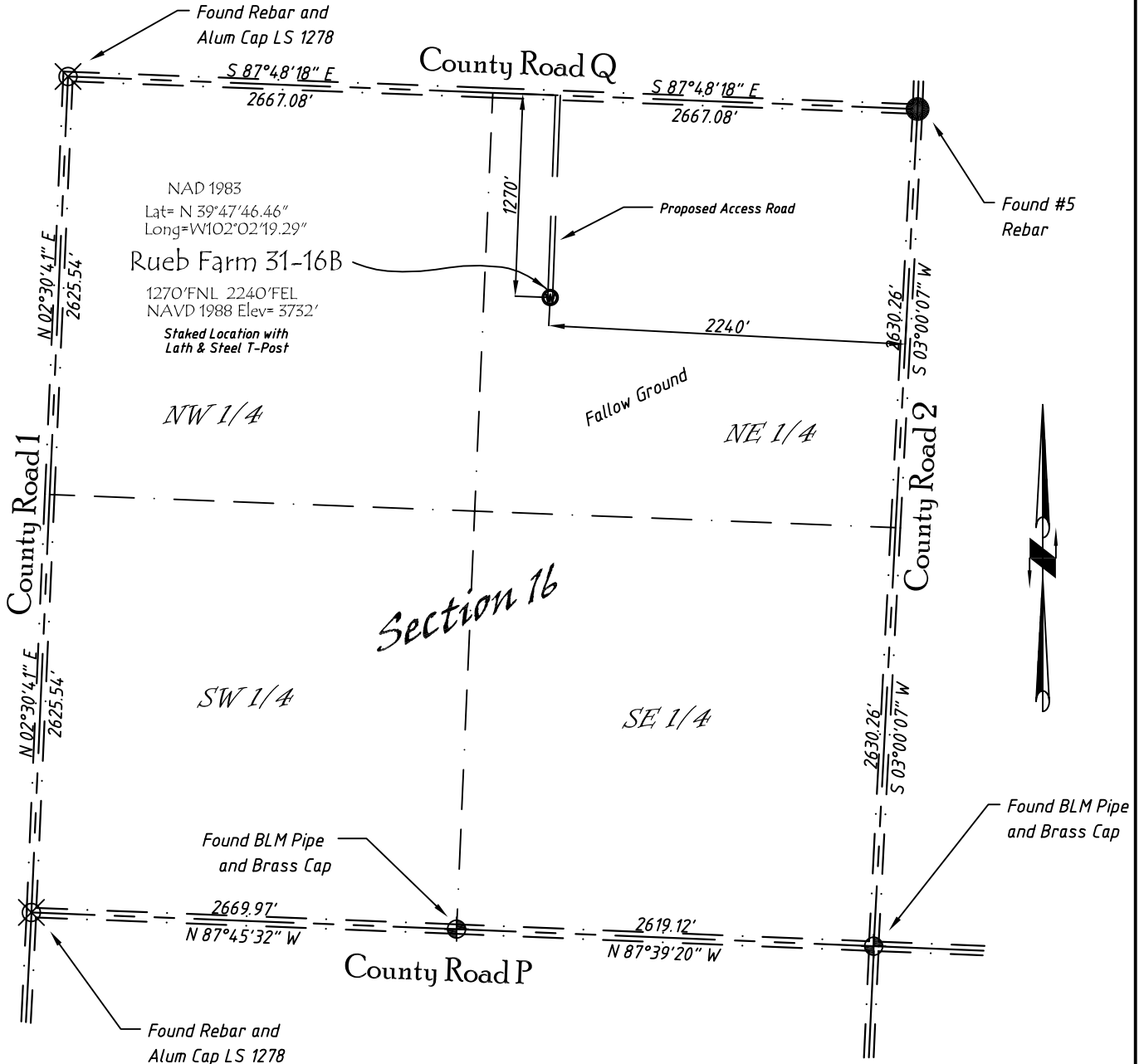


Well Location Map

# Rueb Farm 31-16B

NW 1/4, NE 1/4, Section 16, T3S, R42W, 6th P.M. Cheyenne County, Kansas  
 1270' FNL - 2240' FEL Elev=3732'



Copyright © 2011

Directions:

From St. Francis, KS, go West on Hwy 36 approximately 12.2 miles to County Road 2, then go North 3 mile to County Road Q, then W 0.4 miles. Then South 1270' to Staked location.

*This Drawing is for Construction Purposes Only*

Noble Energy, Inc.		
<b>DRAWN</b> SP	<b>DATE</b> 8/3/11	Section 16
<b>FB</b> B76 P25	<b>EQ</b> HijPro	T3S, R42W, 6th P.M. Cheyenne County, KS
<b>SCALE</b> 1"=1000'	<b>SHEET</b> 1 of 1	<b>PROJECT NO.</b> 1570.200

North Winds Surveys, Inc.

402 Walnut  
 Kanorado, KS  
 785/399/2551