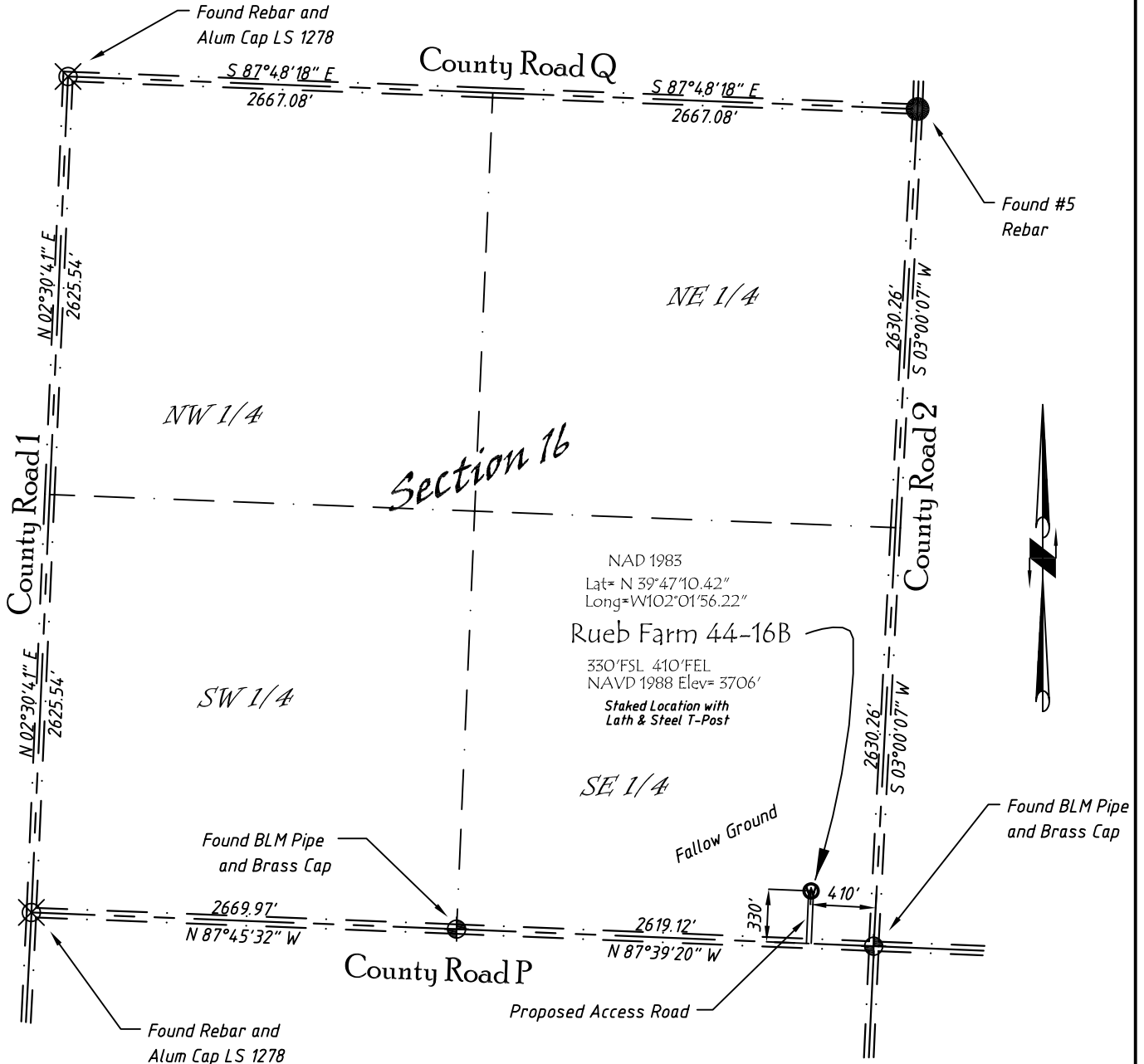


Well Location Map

Rueb Farm 44-16B

SE 1/4, SE 1/4, Section 16, T3S, R42W, 6th P.M. Cheyenne County, Kansas
 330' FSL - 410' FEL Elev=3706'



Copyright © 2011

Directions:

From St. Francis, KS, go West on Hwy 36 approximately 12.2 miles to County Road 2, then go North 2 miles to County Road P, then W 410 feet. Then North 330' to Staked location.

This Drawing is for Construction Purposes Only

Noble Energy, Inc.		
DRAWN SP	DATE 8/3/11	Section 16 T3S, R42W, 6th P.M. Cheyenne County, KS
FB B76 P25	EQ HijPro	
SCALE 1"=1000'	SHEET 1 of 1	PROJECT NO. 1570.202

North Winds Surveys, Inc.
 402 Walnut
 Kanorado, KS
 785/399/2551