

GEOLOGIC
REPORT
LOG

COMPANY MIKOL OIL LLC
HAYS KANSAS 67601

WELL MARSTON #1A-27

FIELD COLBY

LOCATION 515' FNL & 568' FEL

SEC. 27 TWP. 10S RGE. 17W

COUNTY ROOKS

STATE KANSAS

API # 15-163-23938-00-00

OPERATOR MIKOL OIL LLC

CONTRACTOR DISCOVERY DRLG. RIG 4

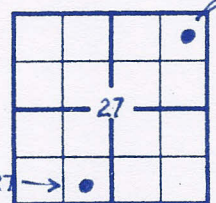
COMM: 03-31-2011 COMP: _____

CASING RECORD

SURF: 8 5/8" @ 223' PROD: 5 1/2" @ 3723'

TOTAL DEPTH DRILLERS: 3725

TOTAL DEPTH LOG 3725



RICHMOND 2-27 →

PRODUCTION _____

ELEVATION KB 2073
 DF _____
 GL 2065

Drilling Measured From: KELLY BASHING

Samples Saved From 2900 To: TD

Drilling Time From 2800 To: TD

Samples Examined From: 2900 To: TD

Geological Supervision From 2800 To Total Depth

Wellsite Geologist ED GLASSMAN

Electrical Surveys DUAL INDUCTION
DENSITY-NEUTRON
MICRO

FORMATION TOPS AND STRUCTURAL POSITION

FORMATION	SAMPLE TOP	ELECTRIC LOG TOP	SUB-SEA DATUM	STRUCTURAL POSITION
ANHYDRITE	1315 (758)	1310	763	+6
B/ANHYDRITE	1353 (720)	1348	725	+3
TOPEKA	3022 (-949)	3022	-949	-6
HEEBNER	3242 (-1169)	3243	-1170	+1
LANSING	3286 (-1213)	3286	-1213	0
B/KANSAS CITY	3526 (-1453)	3529	-1456	-2
CHERT CONGLOMERATE	3582 (-1509)	3573	-1500	+22
ARBUCKLE	3658 (-1585)	3675	-1602	-9

REFERENCE WELL FOR STRUCTURE MIKOL OIL LLC, RICHMOND #2-27,
479' FSL & 2289' FWL; SEC. 27-10S-17W;
ROOKS COUNTY KANSAS.

DRILL STEM TESTS

3

No.	Interval	IFP/Time	ISIP/Time	FFP/Time	FSIP/Time	IHH-FHH	RECOVERY
1	3276- 3346	-/-	-/-	-/-	-/-	1574- 1541	MIS RUN PACKER FAILURE TOOL SLID 5'
2	3444- 3526	42/ 15	887/ 60	46/ 15	506/ 30	1716- 1658	50' MUD TOOL SLID 12' (Flushed tool - 2nd flow.)
3	3544- 3605	46/ 15	737/ 60	50/ 15	495/ 45	1761- 1703	56' MUD

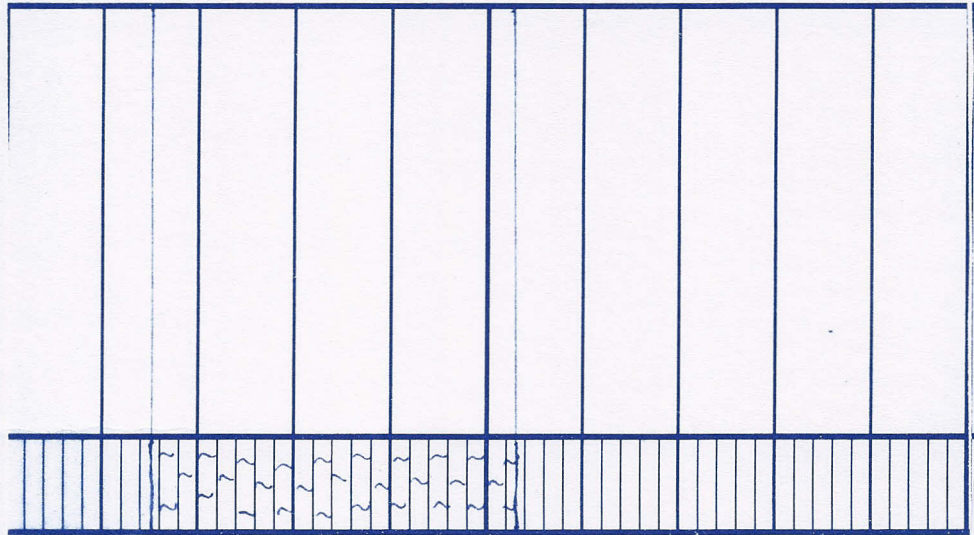
REMARKS AND RECOMMENDATIONS Based on rock sample oil shows
and log analysis, it was agreed to
cement 5 1/2" casing to further test the
Lansing - Kansas City and Conglomerate
zones through perforations.

Thank You

E. Hoover

AAAPG #5741

4



10 :

20

30

40

1350

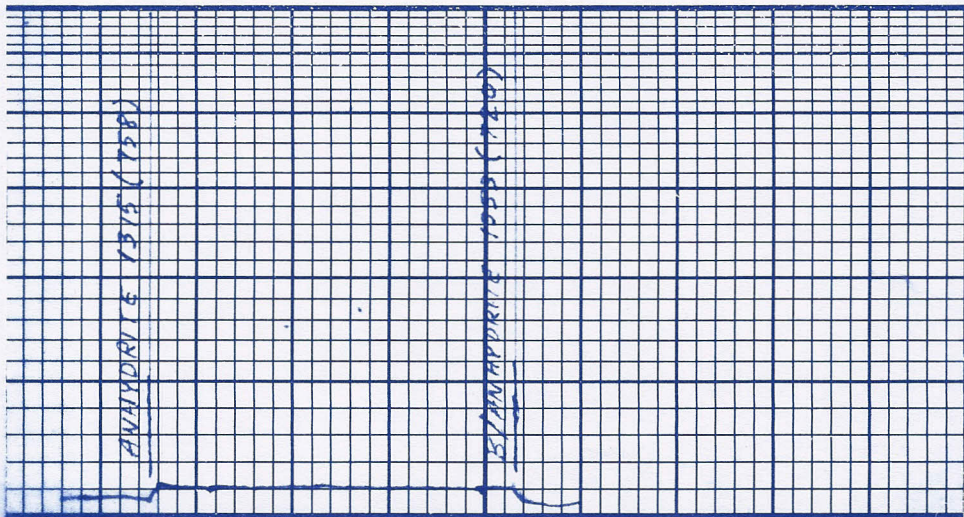
60

70

80

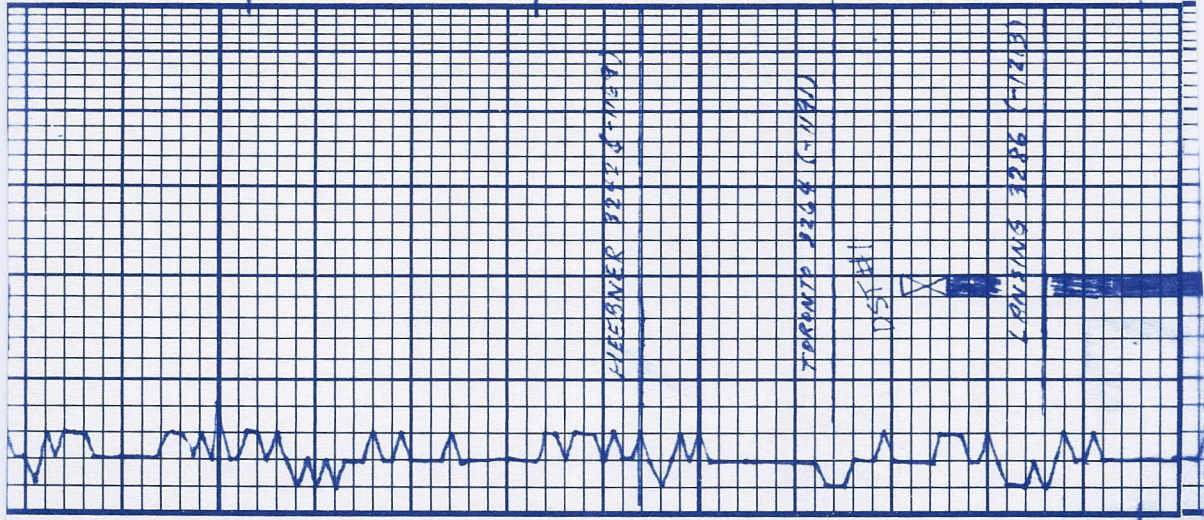


1000



ANHYDRITE 1375 (1380)

ANHYDRITE 1000 (1100)



80

90

3200

10

20

30

40

50

60

70

80

90

3300

SH: ltk, carb, blk.	SH: gry.	LS: lt tan - tan, f-med xln, sli. ool inter xln- ool, P, VSSFO, Sliodor, lt even stn, sme ppp	LS: tan - lt gry, f-med xln, inter xln - frag P, fos. NS	SH: blk, carb, blk.	SH: gry, f, med, pity - blk.	LS: tan - lt brn, f-C xln sli. blk, sli. ool inter xln NSFO, No odor, lt-drk uneven stn.	LS: wt - lt tan, f-med xln sme ch xln, inter xln P, SFO, Sliodor, lt spty uneven stn.
---------------------	----------	--	--	---------------------	---------------------------------	---	--

DST #1

3276 - 3346

MISRUN

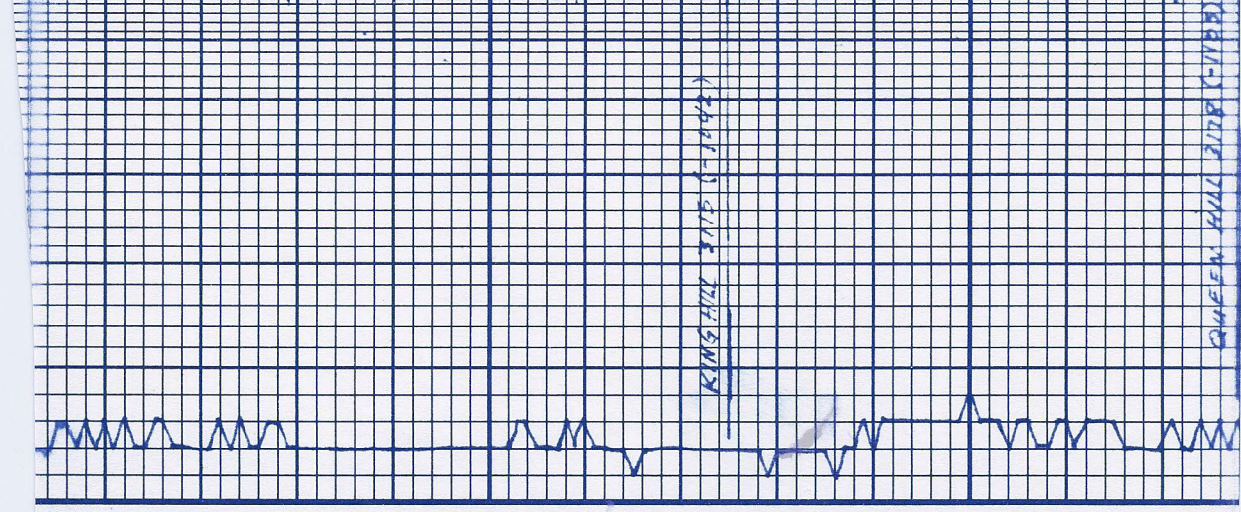
PACKER FAILURE

TOOL SLID 5'

∞

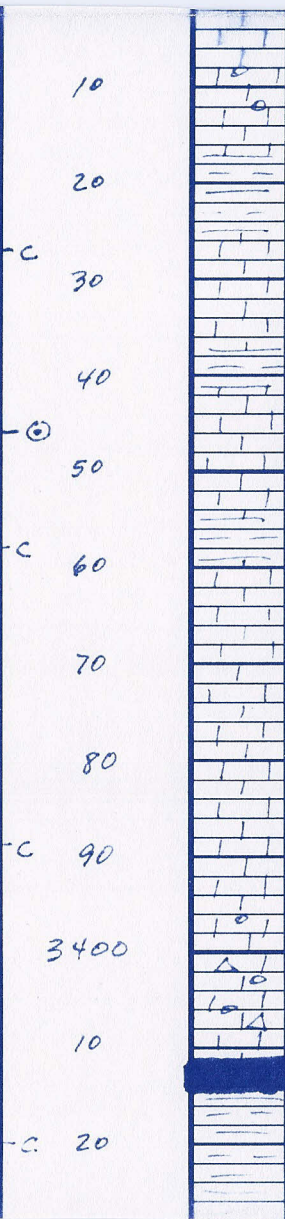
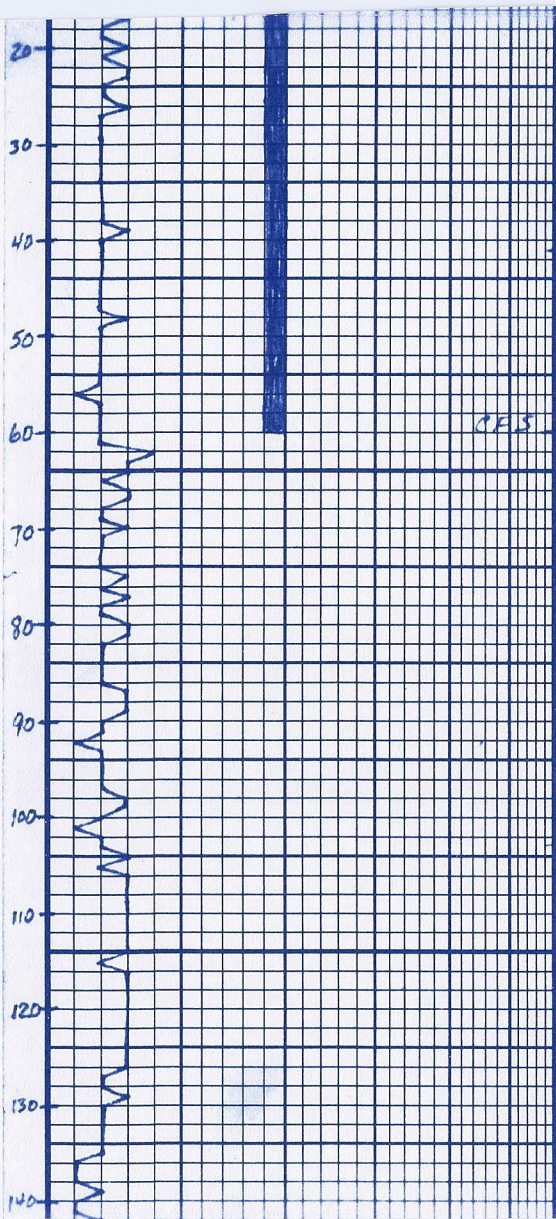
LS: tan, f-med xln, inter xln - frag ♂, fos, N.S.	SH: gry.
SH: gry, f-med, p.ty.	
LS: tan - lt brn - lt gry, f-med xln, mottled, N.S.	
LS: SAB	
LS: tan - lt brn, f-med xln, inter xln ♂, N.S.	
LS: SAB	
SH: blk, carb, blk.	
SH: gry, f-med, p.ty - blk.	
LS: tan, f-med xln, inter xln ♂, N.S.	
LS: tan, f-med xln, inter xln ♂, N.S.	
LS: SAB	

50
60
70
80
90
3100
10
20
30
40
50
60
70



KING HILL 3115 (-1442)

QUEEN HILL 3118 (-1122)



10
LS: lt tan - tan, f-med
xln, inter xln \emptyset , sl,
ool, FSFO, gd odor,
drk even-uneven stn.
SH: gry, med, blk

20
30
LS: tan - lt gry, f-med xln,
FSFO, sl, odor, lt -
drk even stn.

40
SH: gry, f, med, plty.
50
LS: tan - lt brn, f-med
xln, ool, inter xln - ool
 \emptyset , FSFO, Fr odor, lt -
drk uneven-even stn.

60
SH: gry

70
LS: tan - lt gry, f-med
xln, sl, vuggy, inter
xln - vuggy \emptyset , SSFO,
Fr odor, lt spty stn.

80
LS: tan - lt brn, med xln,
inter xln \emptyset , SSFO, gd
odor, lt - drk even stn.

90
LS: tan - lt brn, f-med xln,
inter xln \emptyset , FSFO,
Fr odor, lt - drk even
stn.

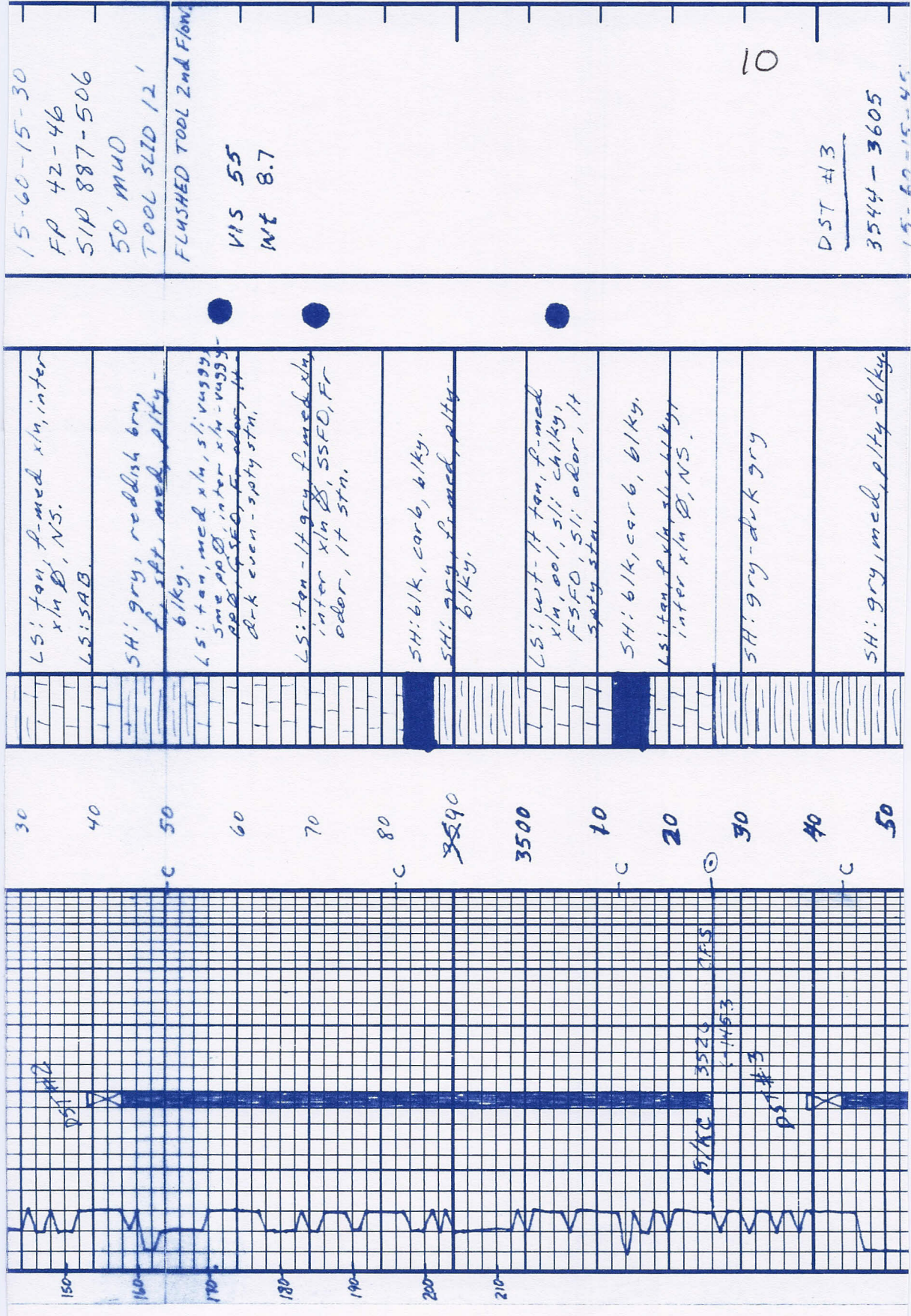
3400
10
LS: tan, f-med xln, inter
xln \emptyset , ool, chrty, VSSFO,
VSl odor, lt spty stn.

10
SH: blk, carb, blk.

20
SH: gry, med, plty - blk.

VIS 56
Wt 8.8

DST # 2
3444 - 3526



15-60-15-30
 FP 42-46
 SIP 887-506
 50' MUD
 TOOL SLID 12'

FLUSHED TOOL 2nd Flow.

VIS 55
 WT 8.7

10

DST #13

3544-3605

15-60-15-40

LS: tan, f-med x/n, inter x/n Ø, NS.
 LS: SAB.

SH: gry, reddish brn, f. sft, med, p/ty-b/ky.

LS: tan, med x/n, sli, vuggy, some pp Ø, inter x/n - vuggy - redd, f. sft, f. odor, lt. drk even - apty stn.

LS: tan - lt gry, f-med x/n, inter x/n Ø, SSFO, Fr odor, lt stn.

SH: blk, carb, b/ky.

SH: gry, f-med, p/ty-b/ky.

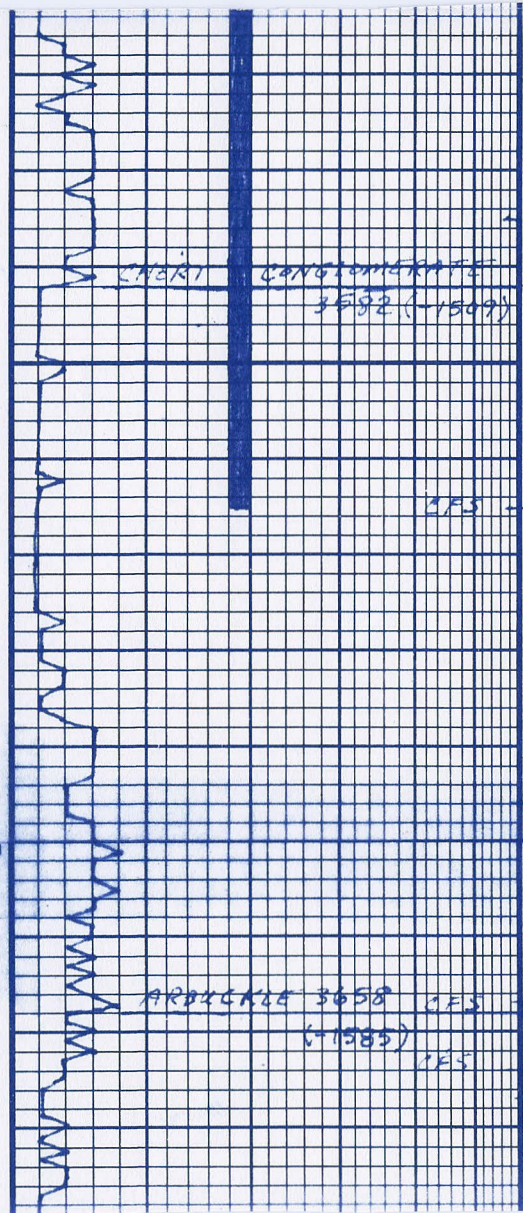
LS: wt - lt tan, f-med x/n,ool, sli ch/ky, FSFO, sli odor, lt apty stn.

SH: blk, carb, b/ky.

LS: tan, f. x/n, sh, ch/ky, inter x/n Ø, NS.

SH: gry - drk gry

SH: gry, med, p/ty-b/ky.

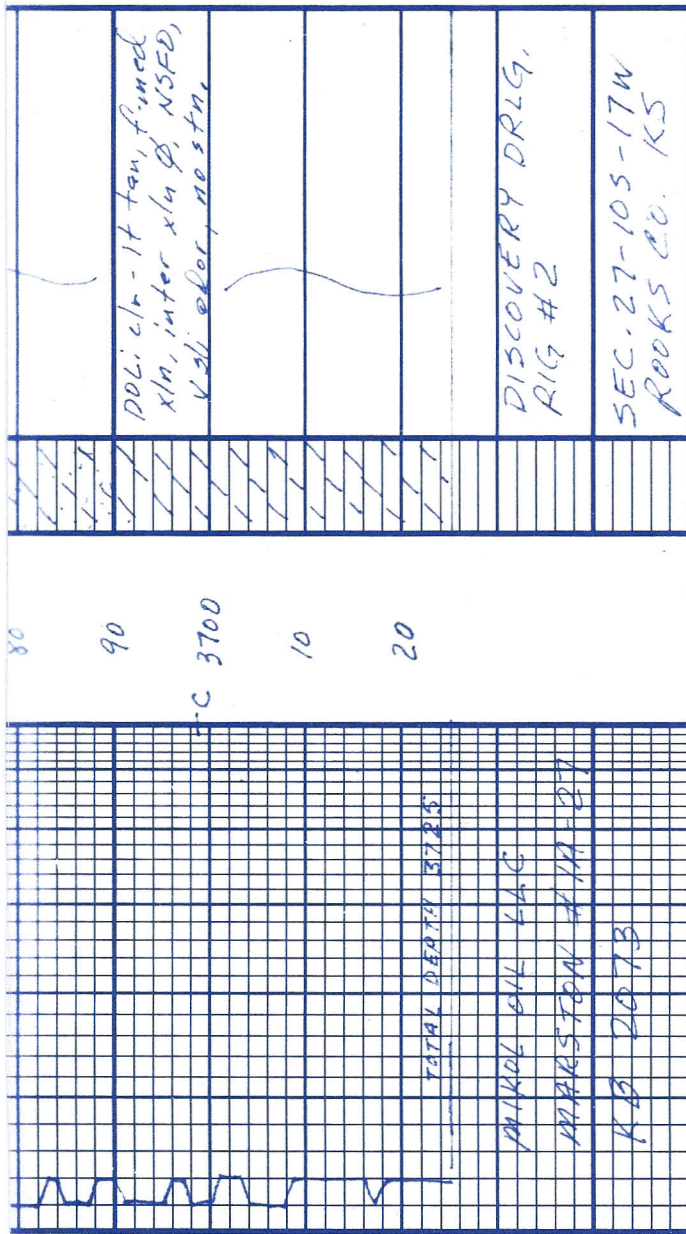


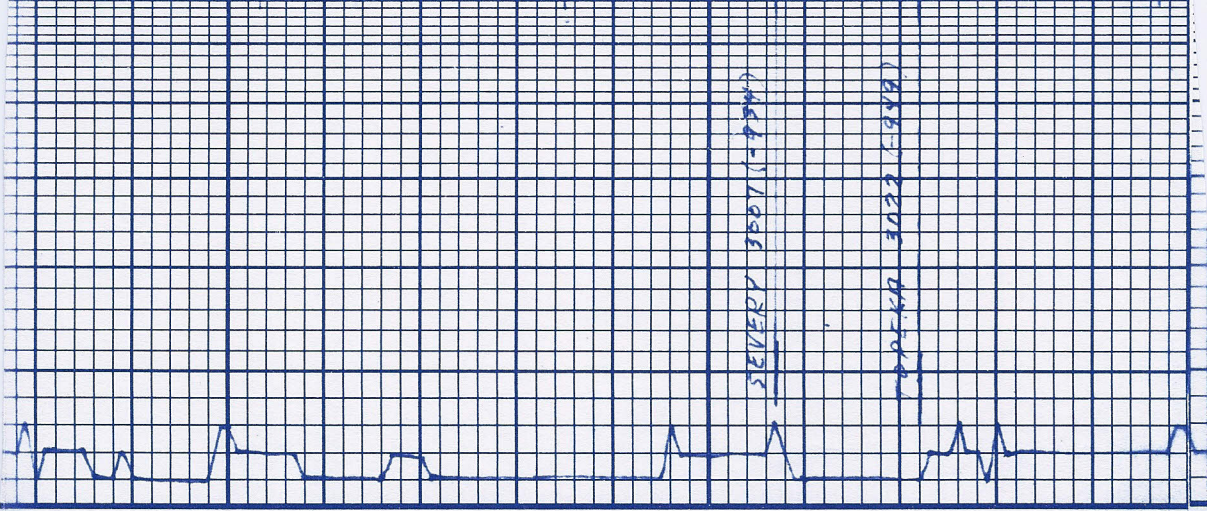
60
70
80
X90
3600
40
50
60
70

○	LS: lt tan-tan, f-med xln, dol, vuggy ip, inter xln-dol-vuggy, SSFO, v sli odor, saty str.
○	SS: clr, f-grn, subrnd-rnd, mod sort, friable, calc, SSFO, v sli odor, lt-drk even str, LS: tan
△	CONG. CHRT: vari clrd, LS: wt-tan, cherty, SSFO on break, SH: vari clrd
△	CONG: SAB
	SH: gry, f, med plty-blky.
	SH: vari clrd, mstly gry - lt olive grn.
	SS: gry-clr, f-med grn, ang-subrnd, poor sort, calc cont, NS.
	SH: mstly lt blu-grn, wxy plty.
	DOL: clr - lt gry, f-med xln, sandy, inter xln-grn, NS.

FP 46-50
SIP 737-495
56' MUD

VIS 55
WT 9.0





30

40

50

60

70

80

90

3000

10

20

30

40

SH: gry - drk gry, blk.

CS: tan, f-med xln,
inter xln Ø, NS.

SH: gry, med, plty -
blk.

SH: gry, f-med, plty

CS: lt brn-brn, f-med
xln, fos, inter xln -
frag Ø, NS.

CS: tan - lt brn, f xln,
inter xln Ø, NS.

6