

GEOLOGIST'S REPORT

DRILLING TIME AND SAMPLE LOG

BACH OIL PRODUCTION

WELL: KATS#1
 S/2 NW SW NE
 LOC.: 1920' FNL & 2310' FWL
 SEC. 2-2-19W
 PHILLIPS COUNTY, KANSAS
 API: 15-147-20646-00-00

ELEVATION

KB: 2245'
 GL: 2240'
 LOG MEASURED
 FROM: KB

SURFACE CASING

8 5/8" surface csg.
 Set @218' KB.
 Cem. w/150sx Common,
 3% CC, 2% Gel.

PRODUCTION CASING

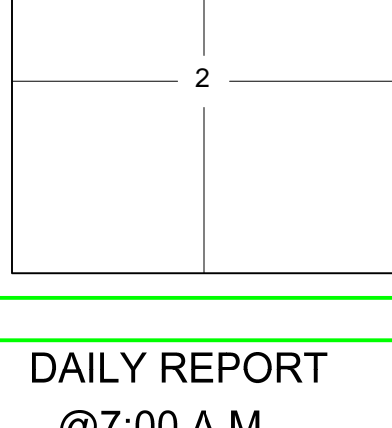
5 1/2" Set @3681'
 w/505 sx

WELL LOG SURVEYS

RAG

ELECTRIC LOG TOPS

FORMATION	DEPTH	DATUM	POSITION
Stone Corral	1814	+431	+6
Base Stone Corral	1836	+409	+4
Topeka	3163	-918	-1
Heebner	3377	-1132	-2
Toronto	3407	-1162	-3
Lansing	3424	-1179	-2
Base Kansas City	3644	-1399	-3



REFERENCE WELL:

Bach Oil Production
 Barbara#1
 35-2-19W

DAILY REPORT

@7:00 A.M.

5-28-11 MIRU, Spud, Set surf.
 5-29-11 670'
 5-30-11 2165'
 5-31-11 2985'
 6-1-11 3510'
 6-2-11 3684' logging

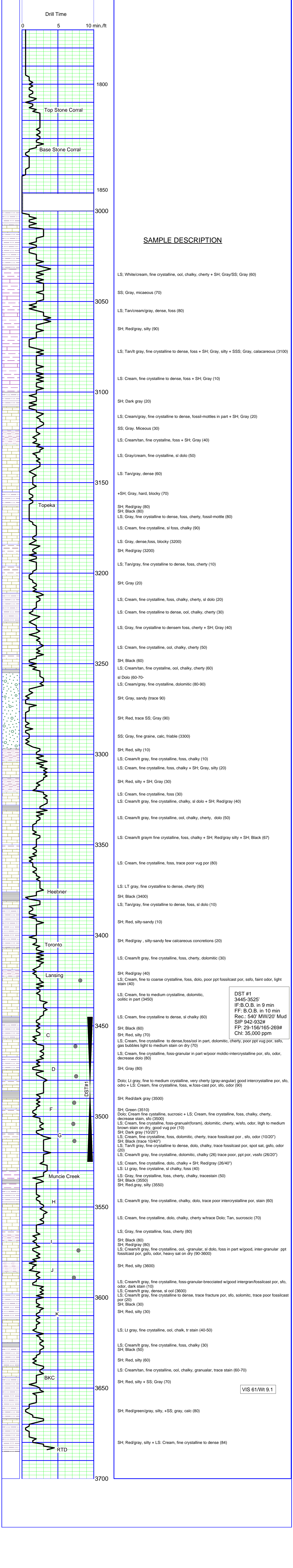
REMARKS AND RECOMMENDATIONS

Due to the proximity of this well to existing production and faulting to the east production casing was run by the operator to further test the shows in this well for commercial production.

Respectfully submitted,

Robert J. Petersen

Robert Petersen



SAMPLE DESCRIPTION

LS: White/cream, fine crystalline, ool, chalky, cherty + SH; Gray/SS; Gray (60)

SS: Gray, micaceous (70)

LS: Tan/cream/gray, dense, foss (80)

SH: Red/gray, silty (90)

LS: Tan/lt gray, fine crystalline to dense, foss + SH; Gray, silty + SSS; Gray, calcareous (3100)

LS: Cream, fine crystalline to dense, foss + SH; Gray (10)

SH: Dark gray (20)

LS: Cream/gray, fine crystalline to dense, fossil-mottles in part + SH; Gray (20)

SS: Gray, Miceous (30)

LS: Cream/tan, fine crystalline, foss + SH; Gray (40)

LS: Gray/cream, fine crystalline, sl dolo (50)

LS: Tan/gray, dense (60)

+SH: Gray, hard, blocky (70)

SH: Red/gray (80)
 SH: Black (80)
 LS: Gray, fine crystalline to dense, foss, cherty, fossil-mottle (80)

LS: Cream, fine crystalline, sl foss, chalky (90)

LS: Gray, dense, foss, blocky (3200)
 SH: Red/gray (3200)

LS: Tan/gray, fine crystalline to dense, foss, cherty (10)

SH: Gray (20)

LS: Cream, fine crystalline, foss, chalky, cherty, sl dolo (20)

LS: Cream, fine crystalline to dense, ool, chalky, cherty (30)

LS: Gray, fine crystalline to dense, foss, cherty + SH; Gray (40)

LS: Cream, fine crystalline, ool, chalky, cherty (50)

SH: Black (60)
 LS: Cream/tan, fine crystalline, ool, chalky, cherty (60)

sl Dolo (60-70-
 LS: Cream/gray, fine crystalline, dolomitic (80-90)

SH: Gray, sandy (trace 90)

SH: Red, trace SS; Gray (90)

SS: Gray, fine graine, calc, friable (3300)

SH: Red, silty (10)
 LS: Cream/lt gray, fine crystalline, foss, chalky (10)
 LS: Cream, fine crystalline, foss, chalky + SH; Gray, silty (20)

SH: Red, silty + SH; Gray (30)

LS: Cream, fine crystalline, foss (30)
 LS: Cream/lt gray, fine crystalline, chalky, sl dolo + SH; Red/gray (40)

LS: Cream/lt gray, fine crystalline, ool, chalky, cherty, dolo (50)

LS: Cream/lt gray fine crystalline, foss, chalky + SH; Red/gray silty + SH; Black (67)

LS: Cream, fine crystalline, foss, trace poor vug por (80)

LS: LT gray, fine crystalline to dense, cherty (90)
 SH: Black (3400)
 LS: Tan/gray, fine crystalline to dense, foss, sl dolo (10)

SH: Red, silty-sandy (10)

SH: Red/gray, silty-sandy few calcareous concretions (20)

LS: Cream/lt gray, fine crystalline, foss, cherty, dolomitic (30)

SH: Red/gray (40)
 LS: Cream, fine to coarse crystalline, foss, dolo, poor ppt fossilcast por, ssfo, faint odor, light stain (40)

LS: Cream, fine to medium crystalline, dolomitic, oolitic in part (3450)

LS: Cream, fine crystalline to dense, sl chalky (60)

SH: Black (60)
 SH: Red, silty (70)
 LS: Cream, fine crystalline to dense, foss/ool in part, dolomitic, cherty, poor ppt vug por, ssfo, brown stain on dry, good vug por (10)
 SH: Dark gray (10/20)
 LS: Cream, fine crystalline, foss, dolomitic, cherty, trace fossilcast por, sfo, odor (10/20)
 SH: Black (trace 10/40)
 LS: Tan/lt gray, fine crystalline to dense, dolo, chalky, trace fossilcast por, spot sat, gsfo, odor (20)
 LS: Cream/lt gray, fine crystalline, dolomitic, chalky (26) trace poor, ppt por, vssfo (26/20')

LS: Cream, fine crystalline, dolo, chalky + SH; Red/gray (26/40)
 LS: Lt gray, fine crystalline, sl chalky, foss (40)

LS: Gray, fine crystalline, foss, cherty, chalky, trace stain (50)
 SH: Black (3550)
 SH: Red, silty (3550)

LS: Cream/lt gray, fine crystalline, chalky, dolo, trace poor intercrystalline por, stain (60)

LS: Cream, fine crystalline, dolo, chalky, cherty w/trace Dolo; Tan, sucrosic (70)

LS: Gray, fine crystalline, foss, cherty (80)

SH: Black (80)
 SH: Red/gray (80)
 LS: Cream/lt gray, fine crystalline, ool, -granular, sl dolo, foss in part w/good, inter-granular ppt fossilcast por, gsfo, odor, heavy sat on dry (90-3600)

SH: Red, silty (3600)

LS: Cream/lt gray, fine crystalline, foss-granular-brecciated w/good intergran/fossilcast por, sfo, odor, dark stain (10)
 LS: Cream/lt gray, dense, sl ool (3600)
 LS: Cream/lt gray, fine crystalline to dense, trace fracture por, sfo, solomitic, trace poor fossilcast por (20)
 SH: Black (30)
 SH: Red, silty (30)

LS: Lt gray, fine crystalline, ool, chalk, tr stain (40-50)

LS: Cream/lt gray, fine crystalline, foss, chalky (30)
 SH: Black (50)

SH: Red, silty (60)

LS: Cream/tan, fine crystalline, ool, chalky, granular, trace stain (60-70)

SH: Red, silty + SS; Gray (70)

SH: Red/green/gray, silty, +SS; gray, calc (80)

SH: Red/gray, silty + LS: Cream, fine crystalline to dense (84)

DST #1
 3445-3525'
 IF: B.O.B. in 9 min
 FF: B.O.B. in 10 min
 Rec.: 540' MW/20' Mud
 SIP 942-932#
 FP: 29-156/165-269#
 Chl: 35,000 ppm

VIS 61/Wt 9.1