

**TRILOBITE
TESTING, INC**

DRILL STEM TEST REPORT

Samuel Gary Jr. & Ass. Inc,
1515 Wynkoop St. Suite 700
Denver CO, 80202
ATTN: Clayton Camozzi

Schmeidler 1-35
35-14s-r17w- Ellis
Job Ticket: 42576 **DST#: 1**
Test Start: 2011.04.08 @ 23:13:52

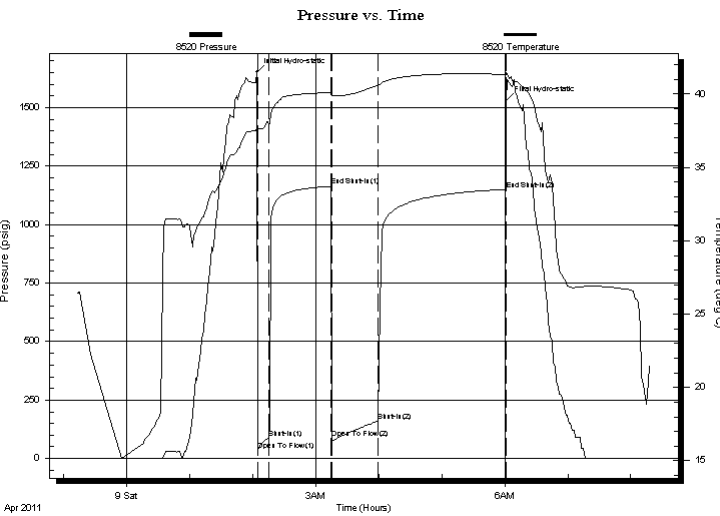
GENERAL INFORMATION:

Formation: **H, I, J**
 Deviated: No Whipstock: ft (KB)
 Time Tool Opened: 02:04:52
 Time Test Ended: 08:17:52
 Interval: **3315.00 ft (KB) To 3364.00 ft (KB) (TVD)**
 Total Depth: 3364.00 ft (KB) (TVD)
 Hole Diameter: 7.88 inches Hole Condition: Fair
 Test Type: Conventional Bottom Hole
 Tester: Cody Bloedorn
 Unit No: 38
 Reference Elevations: 1922.00 ft (KB)
 1914.00 ft (CF)
 KB to GR/CF: 8.00 ft

Serial #: 8520 Outside

Press @ RunDepth: 161.56 psig @ 3372.00 ft (KB) Capacity: 8000.00 psig
 Start Date: 2011.04.08 End Date: 2011.04.09 Last Calib.: 2011.04.09
 Start Time: 23:13:53 End Time: 08:17:52 Time On Btm: 2011.04.09 @ 02:04:22
 Time Off Btm: 2011.04.09 @ 06:01:52

TEST COMMENT: 10 IF- 6" IN 10 Min.
 60 IS- No blow back
 45 FF- B.O.B. 27Min
 120 FSI-No blow back



PRESSURE SUMMARY

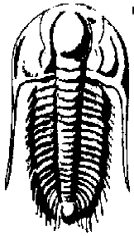
Time (Min.)	Pressure (psig)	Temp (deg C)	Annotation
0	1650.91	37.73	Initial Hydro-static
1	37.05	37.50	Open To Flow (1)
12	88.26	37.93	Shut-In(1)
71	1164.26	40.09	End Shut-In(1)
71	86.55	39.90	Open To Flow (2)
116	161.56	40.59	Shut-In(2)
237	1150.82	41.35	End Shut-In(2)
238	1532.07	41.48	Final Hydro-static

Recovery

Length (ft)	Description	Volume (bbl)
248.00	80% mud, 20% Water	3.27
62.00	80% Water, 20% Mud	0.87

Gas Rates

	Choke (inches)	Pressure (psig)	Gas Rate (Mcf/d)



**TRILOBITE
TESTING, INC**

DRILL STEM TEST REPORT

FLUID SUMMARY

Samuel Gary Jr. & Ass. Inc,

Schmeidler 1-35

1515 Wynkoop St. Suite 700
Denver CO, 80202

35-14s-r17w- Ellis

Job Ticket: 42576

DST#: 1

ATTN: Clayton Camozzi

Test Start: 2011.04.08 @ 23:13:52

Mud and Cushion Information

Mud Type: Gel Chem

Cushion Type:

Oil API:

deg API

Mud Weight: 9.00 lb/gal

Cushion Length:

ft

Water Salinity:

1600 ppm

Viscosity: 42.00 sec/qt

Cushion Volume:

bbbl

Water Loss: 8.38 in³

Gas Cushion Type:

Resistivity: ohm.m

Gas Cushion Pressure:

psig

Salinity: 6200.00 ppm

Filter Cake: inches

Recovery Information

Recovery Table

Length ft	Description	Volume bbbl
248.00	80% mud, 20% Water	3.272
62.00	80% Water, 20% Mud	0.870

Total Length: 310.00 ft Total Volume: 4.142 bbl

Num Fluid Samples: 0

Num Gas Bombs: 0

Serial #:

Laboratory Name:

Laboratory Location:

Recovery Comments: resistivity- .098@.74 degrees 75000

Sampler: 1000ML w ater, 230psi

