



DRILL STEM TEST REPORT

Prepared For: **Grand Mesa Operating**

1700 N Waterfront Parkway
Building 600
Wichita, KS 67206+5514

ATTN: Steve Stribling

33/13S/31W/Gove

Hess 2-33

Start Date: 2011.06.05 @ 17:45:00

End Date: 2011.06.06 @ 00:05:00

Job Ticket #: 15797 DST #: 7

Superior Testers Enterprises LLC
PO Box 138 Great Bend KS 67530
1-800-792-6902

Printed: 2011.06.06 @ 09:32:53



DRILL STEM TEST REPORT

Grand Mesa Operating
 1700 N Waterfront Parkway
 Building 600
 Wichita, KS 67206+5514
 ATTN: Steve Stribling

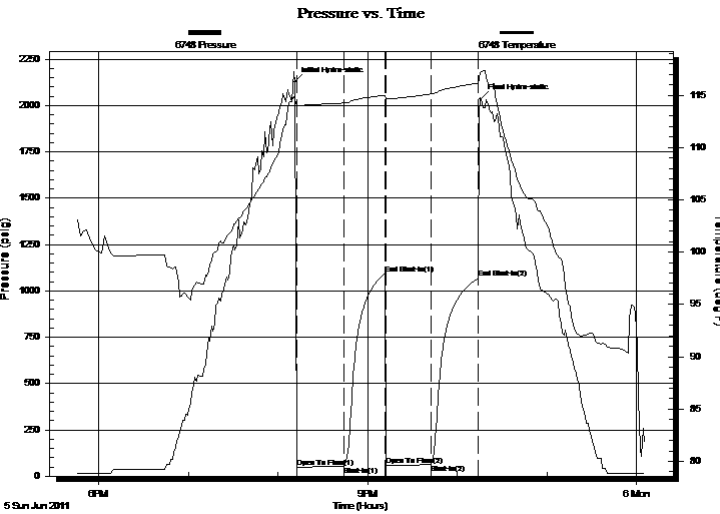
Hess 2-33
33/13S/31W/Gove
 Job Ticket: 15797 **DST#: 7**
 Test Start: 2011.06.05 @ 17:45:00

GENERAL INFORMATION:

Formation: **Lansing zone L**
 Deviated: No Whipstock: ft (KB)
 Time Tool Opened: 20:12:30
 Time Test Ended: 00:05:00
 Interval: **4192.00 ft (KB) To 4227.00 ft (KB) (TVD)**
 Total Depth: 4227.00 ft (KB) (TVD)
 Hole Diameter: 7.88 inches Hole Condition: Fair
 Test Type: Conventional Bottom Hole (Initial)
 Tester: Ken Swinney
 Unit No: 3325 Scott City/94
 Reference Elevations: 2877.00 ft (KB)
 2872.00 ft (CF)
 KB to GR/CF: 5.00 ft

Serial #: 6748 Outside
 Press @ Run Depth: 1067.04 psig @ 4224.00 ft (KB) Capacity: 5000.00 psig
 Start Date: 2011.06.05 End Date: 2011.06.06 Last Calib.: 2011.06.05
 Start Time: 17:46:00 End Time: 00:05:30 Time On Btm: 2011.06.05 @ 20:11:30
 Time Off Btm: 2011.06.05 @ 22:16:00

TEST COMMENT: 1ST Open 30 Minutes/Weak blow/Blow built to 1/4 inch
 1ST Shut In 30 Minutes/No blow back
 2ND Open 30 Minutes/No blow
 2ND Shut In 30 Minutes/No blow back



PRESSURE SUMMARY

| Time (Min.) | Pressure (psig) | Temp (deg F) | Annotation |
|-------------|-----------------|--------------|----------------------|
| 0 | 2128.33 | 114.58 | Initial Hydro-static |
| 1 | 47.13 | 114.02 | Open To Flow (1) |
| 33 | 54.28 | 114.26 | Shut-In(1) |
| 60 | 1091.60 | 115.00 | End Shut-In(1) |
| 61 | 56.12 | 114.71 | Open To Flow (2) |
| 91 | 62.59 | 115.11 | Shut-In(2) |
| 123 | 1067.04 | 116.16 | End Shut-In(2) |
| 125 | 2036.52 | 117.25 | Final Hydro-static |

Recovery

| Length (ft) | Description | Volume (bbl) |
|-------------|-------------|--------------|
| 20.00 | Mud 100% | 0.10 |
| | | |
| | | |
| | | |
| | | |

Gas Rates

| Choke (inches) | Pressure (psig) | Gas Rate (Mcf/d) |
|----------------|-----------------|------------------|
| | | |



DRILL STEM TEST REPORT

TOOL DIAGRAM

Grand Mesa Operating
 1700 N Waterfront Parkway
 Building 600
 Wichita, KS 67206+5514
 ATTN: Steve Stribling

Hess 2-33
33/13S/31W/Gove
 Job Ticket: 15797 **DST#: 7**
 Test Start: 2011.06.05 @ 17:45:00

Tool Information

| | | | | | |
|---------------------------|--------------------|-----------------------|--------------------------------|------------------------|-------------|
| Drill Pipe: | Length: 4056.00 ft | Diameter: 3.88 inches | Volume: 59.32 bbl | Tool Weight: | 2000.00 lb |
| Heavy Wt. Pipe: | Length: 0.00 ft | Diameter: 0.00 inches | Volume: 0.00 bbl | Weight set on Packer: | 20000.00 lb |
| Drill Collar: | Length: 120.00 ft | Diameter: 2.25 inches | Volume: 0.59 bbl | Weight to Pull Loose: | 65000.00 lb |
| | | | <u>Total Volume: 59.91 bbl</u> | Tool Chased | 0.00 ft |
| Drill Pipe Above KB: | 13.00 ft | | | String Weight: Initial | 55000.00 lb |
| Depth to Top Packer: | 4192.00 ft | | | Final | 55000.00 lb |
| Depth to Bottom Packer: | ft | | | | |
| Interval between Packers: | 35.00 ft | | | | |
| Tool Length: | 64.00 ft | | | | |
| Number of Packers: | 2 | Diameter: 6.75 inches | | | |

Tool Comments:

| Tool Description | Length (ft) | Serial No. | Position | Depth (ft) | Accum. Lengths |
|------------------|-------------|------------|----------|------------|------------------------------------|
| Shut-in tool | 5.00 | | | 4168.00 | |
| Hydraulic tool | 5.00 | | | 4173.00 | |
| Change over sub | 1.00 | | | 4174.00 | |
| Jars | 6.00 | | | 4180.00 | |
| Safety Joint | 2.00 | | | 4182.00 | |
| Packer | 5.00 | | | 4187.00 | 29.00 Bottom Of Top Packer |
| Packer | 5.00 | | | 4192.00 | |
| Anchor | 30.00 | | | 4222.00 | |
| Recorder | 1.00 | 6749 | Inside | 4223.00 | |
| Recorder | 1.00 | 6748 | Outside | 4224.00 | |
| Bullnose | 3.00 | | | 4227.00 | 35.00 Bottom Packers & Anchor |

Total Tool Length: 64.00



DRILL STEM TEST REPORT

FLUID SUMMARY

Grand Mesa Operating

Hess 2-33

1700 N Waterfront Parkway
Building 600
Wichita, KS 67206+5514
ATTN: Steve Stribling

33/13S/31W/Gove

Job Ticket: 15797

DST#: 7

Test Start: 2011.06.05 @ 17:45:00

Mud and Cushion Information

Mud Type: Gel Chem

Mud Weight: 9.00 lb/gal

Viscosity: 64.00 sec/qt

Water Loss: 7.20 in³

Resistivity: ohm.m

Salinity: 6100.00 ppm

Filter Cake: 1.00 inches

Cushion Type:

Cushion Length: ft

Cushion Volume: bbl

Gas Cushion Type:

Gas Cushion Pressure: psig

Oil API:

Water Salinity: deg API

ppm

Recovery Information

Recovery Table

| Length ft | Description | Volume bbl |
|--------------|-------------|---------------|
| 20.00 | Mud 100% | 0.098 |

Total Length: 20.00 ft Total Volume: 0.098 bbl

Num Fluid Samples: 0

Num Gas Bombs: 0

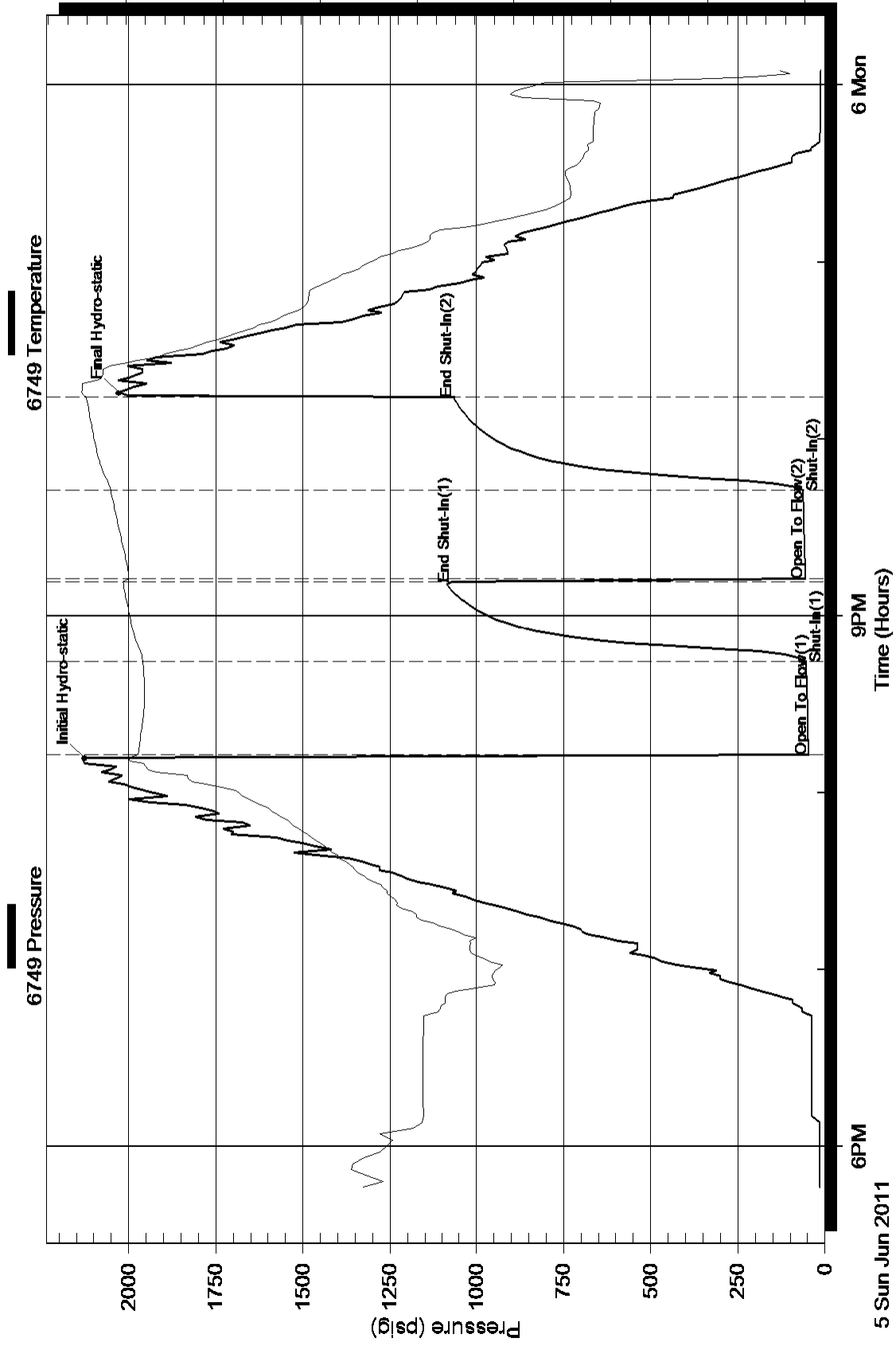
Serial #:

Laboratory Name:

Laboratory Location:

Recovery Comments:

Pressure vs. Time



Pressure vs. Time

