



Woolsey Operating Company, LLC

Scale 1:240 (5"=100') Imperial

Measured Depth Log

Well Name: Michel 'B' GU #2
Location: Section 17 - Township 34 South - Range 11 West
License Number: 15-007-23681-0000
Spud Date: April 8, 2011
Surface Coordinates: 660' FSL, 660' FWL or C NW NW
Field: Rhodes South
Bottom Hole Verticle Hole
Coordinates:
Ground Elevation (ft): 1408' K.B. Elevation (ft): 1419'
Logged Interval (ft): 4000' To: 5180' Total Depth (ft): 5180'
Formation: Kansas City Group ---> Simpson Group
Type of Drilling Fluid: Chemical Mud Displaced at 3369'
Region: Barber County, KS
Drilling Completed: April 17, 2011
Printed by WellSight Log Viewer from WellSight Systems 1-800-447-1534 www.WellSight.com

OPERATOR

Company: Woolsey Operating Company, LLC
Address: 125 N. Market, Suite 1000
Wichita, KS 67202

GEOLOGIST

Name: Bill Klaver
Company: Woolsey Operating Co. LLC
Address: 125 N. Market, Wichita Kansas, 67202

COMMENTS

Surface Casing: Set 5 joints 10 3/4" X 32.75# at 216' KB (tally 203') with 240 sx Class A, 2% gel, 3% cc. Plug down 4:14 am on April 7, 2011, Cement did circulate.

Production Casing: 4 1/2 X 10.50#

Deviation Surveys: 1/4 at 219', 1/4 at 1186', 3/4 at 1685', 3/4 at 2217', 1/2 at 2713', 1/4 at 3213', 1/2 at 3713', 3/4 at 4216', 1/4 at 4717', 1/2 at 5180'.

Pipe Strap @ 5073', strap: 5091.67', board: 5092.98'. strap 1.31' short to the board. No correction was made.

Duke Drilling Rig #10 Bit Record:

#1 14 3/4" JZ-38 RR in at 0' out at 219'. 219' in 2.25 hours

#2 7 7/8" Varrel HE-21 in at 219', out at 5073', 4854' in 154 hours

#3 7 7/8" Varrel HE-29 RR in at 5073' out at 5180'

Gas Detector: Woolsey Operating Co. Gas Trailer #2

Mud System: Mud Co. Brad Bortz, Engineer

DSTs: Trilobite Testing Inc.

OH Logs: Superior Well Services, Dual Induction Laterolog w/SP, CNL-FDC w/PE, GR and Caliper. Jeff Luebbers, Engineer

DSTs

DST #1 Pawnee 4526'-4556'. 30"-60"-60"-90". SB BOB in 1 minute, GTS 15 minutes into IFP. Rec: 4504' GIP, 20' SGCM (2%G 98%M), IHP 2227, IFP 50-18, ISIP 1855. FFP 47-36, FSIP 1815, FHP 2180, BHT 126 degrees. Flow rates on 1/4" choke, IFP: 15" 25.9 MCF, 20" 31.8 MCF, 30" 33.3 MCF. FFP: 5" 33.3 MCF, 15" 39.2 MCF, 30" 43.6 MCF, 45" 46.5 MCF, 60" 58.3 MCF.

CREWS

Joe Livingston, Toolpusher (Semi-Retired)

Scott Edwards, Daylights

Colby Crawford, Evening

Alex Ordonez, Morning

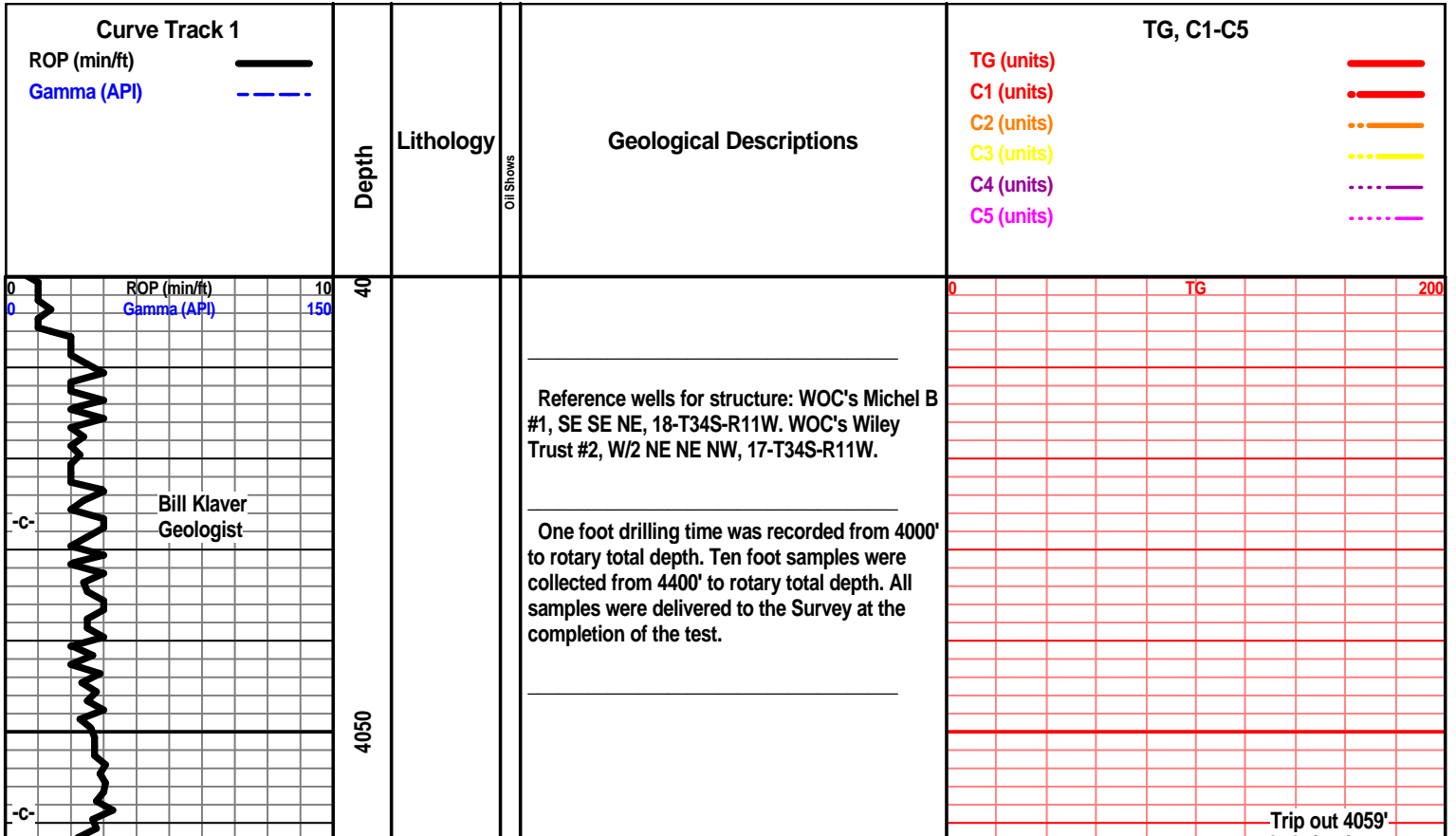
Ron Burns, Relief

ROCK TYPES

	Anhy		Congl		Lmst		Black sh
	Bent		Sdy dolo		Mrlst		Gry sh
	Brec		Shy dolo		Salt		Shale
	Cht		Dol		Shale		Shyslts
	Clyst		Gyp		Sltst		Sltstsh
	Coal		Sdy lmst		Ss		

ACCESSORIES

MINERAL		Chlorite		Pelec		Grysh	
	Anhy		Dol		Pellet	Gryslt	
	Arg		Sand		Pisolite	Lms	
	Bent		Silty		Plant	Sandylms	
	Bit	FOSSIL			Strom	Sh	
	Brecfrag		Algae		Fuss	Sltstn	
	Calc		Amph		Oomoldic		
	Carb		Belm	STRINGER		TEXTURE	
	Chtdk		Bioclst		Anhy		Boundst
	Chtlt		Brach		Arg		Chalky
	Dol		Bryozoa		Bent		Cryxln
	Ferrpel		Cephal		Coal		Earthy
	Ferr		Coral		Dol		Finexln
	Glau		Crin		Gyp		Grainst
	Gyp		Echin		Ls		Lithogr
	Marl		Fish		Mrst		Microxln
	Nodule		Foram		Sltst		Mudst
	Phos		Fossil		Ss		Packst
	Pyr		Gastro		Carbsh		Wackst
	Salt		Oolite		Clystn		
	Sandy		Ostra		Dol		
	Silt						



7 am Drilling Progress:

April 6, 2011 MIRT
 April 7, 2011 WOC, plug down 4 am
 April 8, 2011 Drilling at 1400'
 April 9, 2011 Drilling at 2087'
 April 10, 2011 Drilling at 2680'
 April 11, 2011 Drilling at 3290'
 April 12, 2011 Drilling at 3895'
 April 13, 2011 Drilling at 4265'
 April 14, 2011 DST #1 at 4556'
 April 15, 2011 Drilling at 4724'
 April 16, 2011 CFS at 4970'
 April 17, 2011 Drilling at 5125'--
 E-logs out 10 pm

hole in pipe
 lay down 2
 drill collars
 3-8 pm 4/12/11

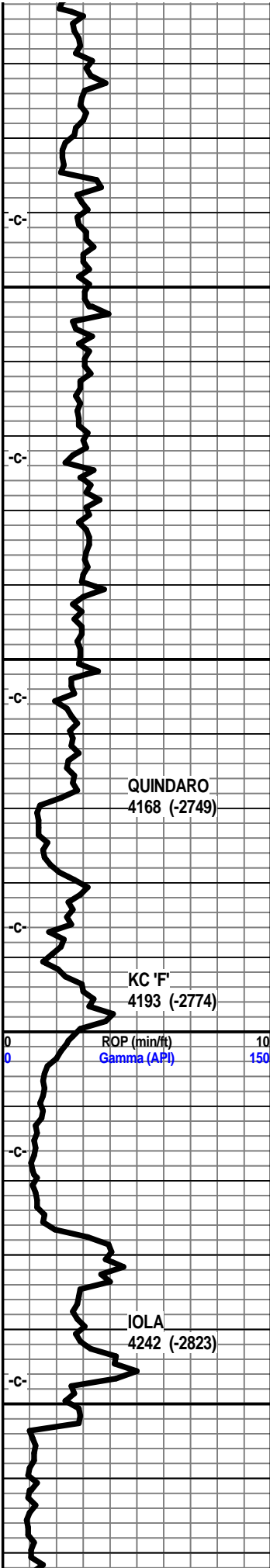
12 am 4127'
 Wednesday
 April 13, 2011

E-Log Tops:

Herington
 Onaga
 Wabaunsee
 LeCompton
 Kanwaka
 Elgin Sand
 Heebner
 Toronto
 Douglas Group
 Douglas Shale
 Haskell
 Stalnaker
 Quindaro
 Kansas City 'Iola'
 Kansas City 'Dennis'
 Stark
 Swope
 Hushpuckney
 Hertha
 B/Kansas City
 Pawnee
 Cherokee Group
 Cherokee Sand
 Mississippi
 C3
 C2A
 C2
 C1
 Osage
 Compton
 Kinderhook
 Woodford
 Misener Sand
 Viola
 Simpson Group
 Wilcox
 McLish Shale
 LTD

0 TG 200

7am 4265'
 Wednesday
 April 14, 2011

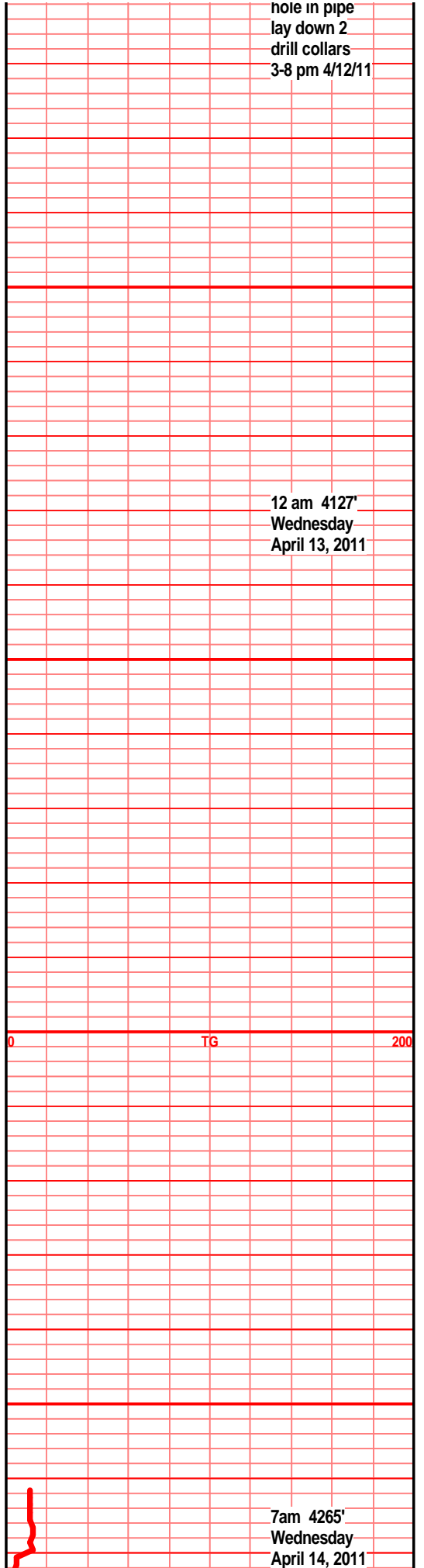
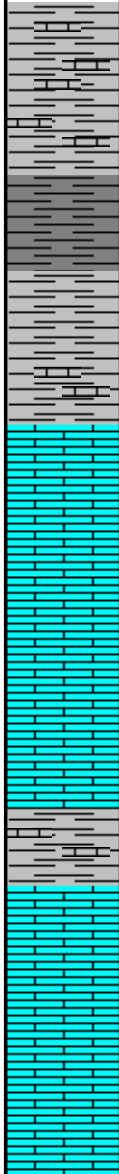


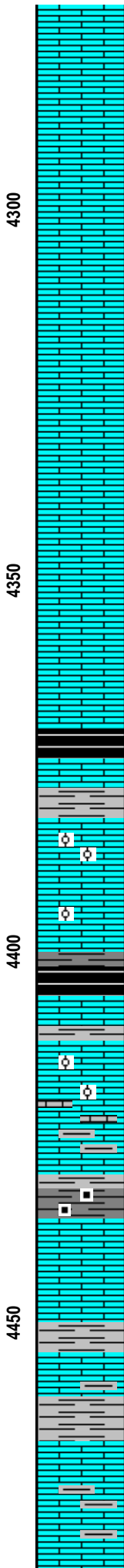
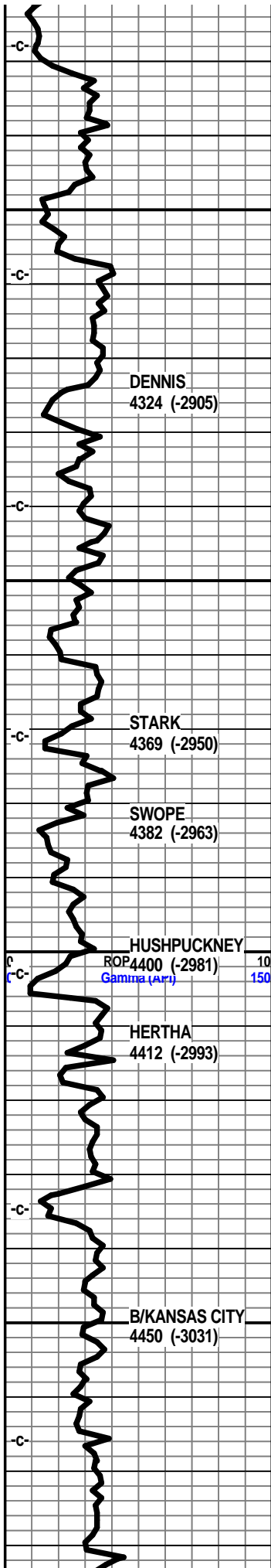
4100

4150

4200

4250





Oil and Gas Show Legend

- ⊗ Gas
- Even Stain/Saturation
- Spotted Stain/Saturation
- Questionable
- ◇ Dead/Gilsonite

1st crm tan tr brn f xln blk dns tr sub chlky foss frags, foss ool, crsly in prt, calc xln fill

1st tan brn gry f vf xln dn shrd blk ang sub chlky tr foss frags, tr foss ool, pelletal

shl gry blk, blk carb, grsy wxy pcs, abun gas bubs, bleeding gas

1st crm tan lt gry buff f xln blk ang sub chlky foss frags, tr ool/pelletal, calc xln fill

1st tan crm lt gry f xln blk ang gran tr sub chlky foss frags, tr ool, arg in prt, calc xln fill, tr chrt tan lt brn shrp frsh

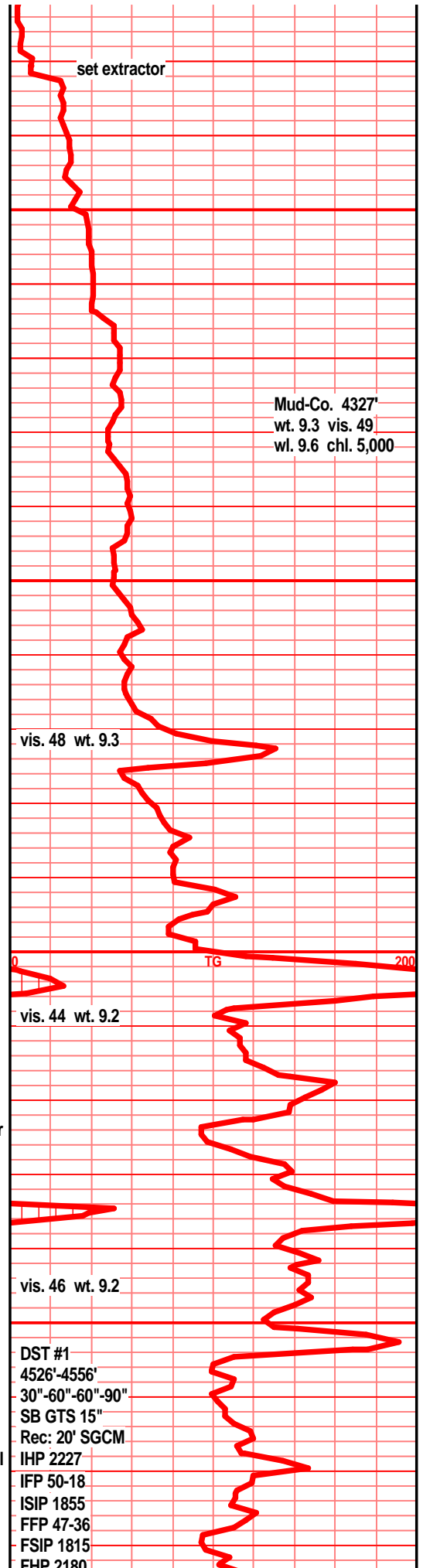
shl gry drk gry blk, blk carb in prt, silty, gritty, slick grsy wxy in prt, gas bubs on brk

1st tan gry tr lt brn vf xln dns hrd blk ang arg silty, tr sub chlky, tr micro foss frags, tr chrt tan brn shrp frsh

shls gry green silty gritty, 1st tan gry brn f vf xln dns hrd blk tr sub chlky tr foss frags/ool spls fine and poor

shl gry green, 1st tan gry lt brn f vf xln dns hrd blk ang arg silty, tr foss frags, tr ool, tr pelletal micro foss, calc xln fill

1st tan gry f vf xln dns hrd blk ang arg silty, tr sub chlky, tr foss frags, calc xln fill, shls gry drk arv brn

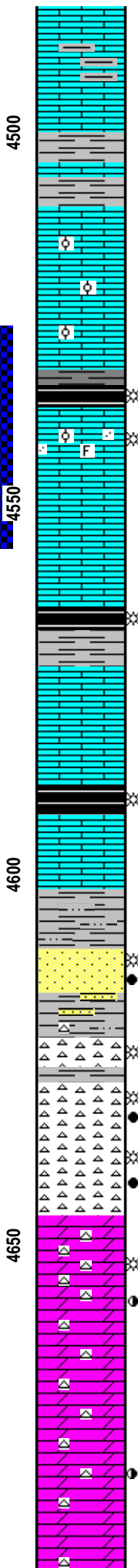
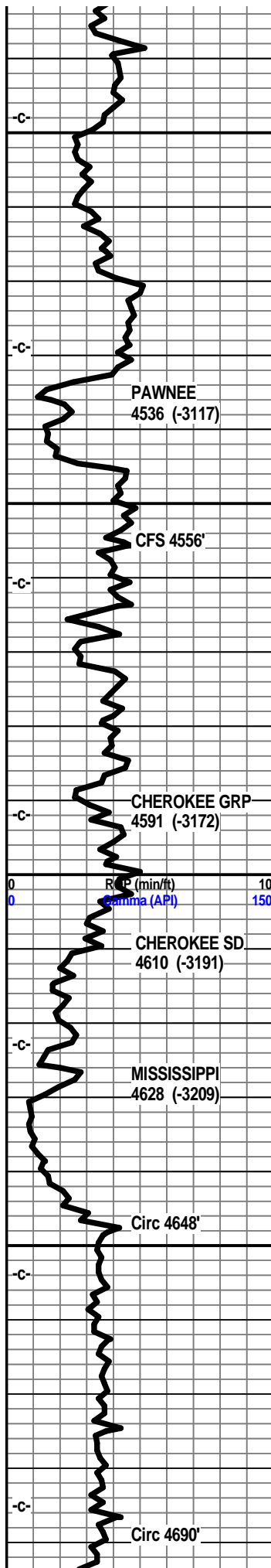


vis. 48 wt. 9.3

vis. 44 wt. 9.2

vis. 46 wt. 9.2

DST #1
4526'-4556'
30"-60"-60"-90"
SB GTS 15"
Rec: 20' SGCM
IHP 2227
IFP 50-18
ISIP 1855
FFP 47-36
FSIP 1815
FLD 2180



shl gry blk, blk carb in prt, gas bubs, shl gry drk gry/blk, gritty, silty

lst crm buff, lt gry f vf xln dns hrd blkly tr sub chlky calc xln fill, foss frags, micro foss, very fine, very poor samples

lst tan buff lt gry f vf xln blkly ang mstly dns, tr sub chlky, micro foss frags, calc xln fill, arg, silts, mucho shls

lst crm tan buff f micro xln blkly ang dns sub chlky foss frags, micro foss, calc xln fill

lst crm tan buff f vf xln blkly ang dns hrd sub chlky, foss frags, micro ool/pelletal, calc xln fill,

lst tan buff vf xln blkly dns sub chlky micro foss, frags/ool calc xln fill

shl gry blk, blk carb in prt, gas bubs, shl gry drk gry/blk, gritty, silty

lst crm buff tan f xln blkly ang pcs, sub chlky, foss frags, foss ool, tr sndy gritty text, snd grn inclu, tr calc xln fill, tr inter xln por, f/gd show gas bubs, filmy cond with gas bub on break, bright UV

lst tan buff f vf xln dns hrd blkly ang tr foss frags, ool/pelletal in prt, calc xln fill

shl gry, drk gry blk, blk carb in prt, wxy grsy, tr gas bubs, lst tan gry vf xln dns hrd blkly ang arg

lst tan buff crm f vf xln blkly ang dns hrd calc xln fill, micro foss frags sub chlky

lst crm tan buff f vf xln dns hrd tr sub chlky micro foss, calc xln re-fill,

shl drk gry blk, blk carb, wxy grsy, gas bubs, lst tan tan buff f vf xln blkly sub chlky, foss frags, micro foss, xln fill

shl gry gry/grn, silty gritty, lst tan drk brn f mic xln blk dns hard calc, arg

shl gry grn, blue/green silty gritty soft

sst crm tan lt brn vf grnd, rded sub rded grns, vw/srtd, sub fria to tite blkly clstrs, calc cem, tr clay fill, tr glau, tr inter grn por, gd odor, filmy SFO, lt brn stain, abun gas bubs

chrt off wht, lt gry, lt smokey, tr yllw/brn, shrp, frsh blkly ang opa to trans, transl, tr weath edge text, frac por, tr pp/moldic por, gd odor, tr gas bubs,

chrt tan gry smokey, tan/brn, shrp frsh blkly opa, trans, weath trip text edge, vis frac por, moldic weath por, gd/strong odor, gas bubs, brn stain, SFO fair UV

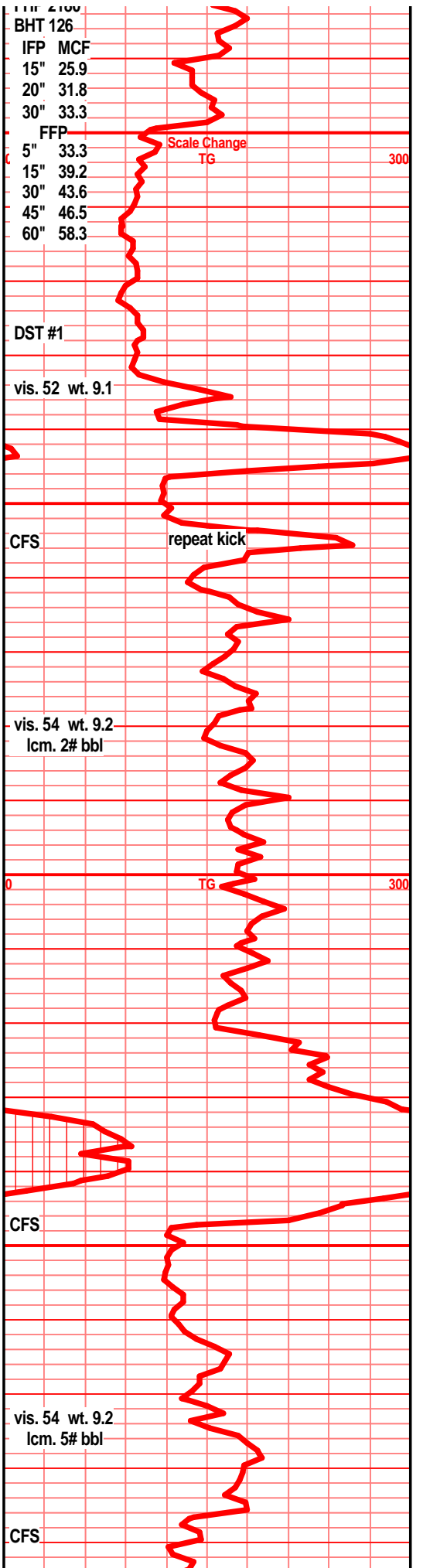
dolo lt gry green vf xln blkly dns hrd chrtly, gry shrp frsh chrt inclu, pp moldic por, sli odor, stain gas bubs, SFO

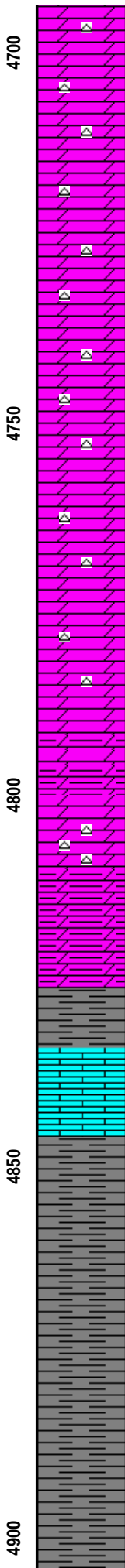
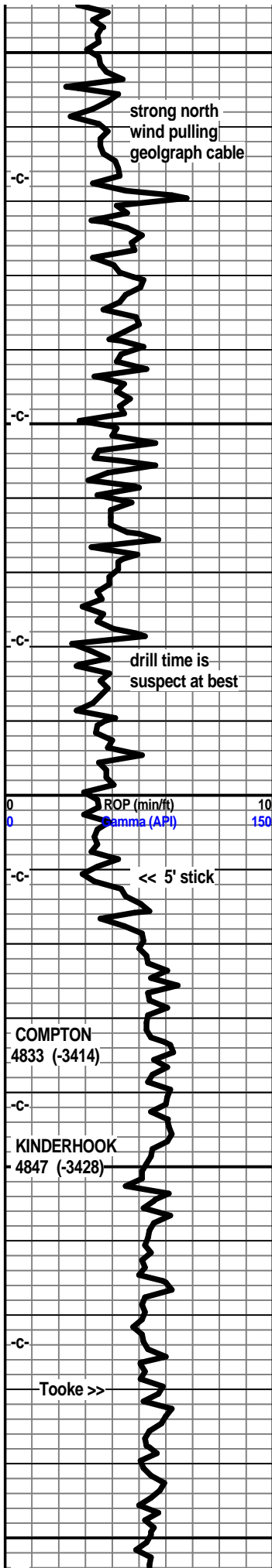
dolo lt crm lt green vf xln gran fnly gritty blkly ang pcs, dns tr chrtly, chrt wht lt gry shrp frsh tr stain, tr gas bubs

dolo crm off wht, lt green tint, vf xln gran fnly gritty sli silty, tr silic text, blkly ang dns pcs, tr gry shrp opa chrt, tr drk stain, nodor

dolo crm lt gry lt green tint f vf xln gran blkly ang dns hrd, silic text in prt, tr glau, chrtly in prt, chrt wht shrp opa, tr stain nodor,

dolo off wht crm lt gry w/lt grn tint, vf xln gran ang blkly dns silic text in prt, glau in prt, bec





any dry dns, silic text in prt, grau in prt, bec arg silty, chrt in prt, chrt wht shrp opa

dolo tan lt green tint bec gry drker gry with depth f vf xln gran silty arg ang pcs, chrt gry smokey shrp frsh

dolo drk tan gry, gry f vf xln gran ang blkly dns silty tr silic text, msly dns shly hrd, tr chrt aa

dolo tan gry, gry f vf xln gran arg silty blkly dns hrd, tr chrt gry smokey shrp frsh

dolo tan drk tan gry, vf xln gran arg tr silty, blkly silty silic text in prt, silty shls, gry med gry calc in prt

dolo grn crm lt gry f vf xln gran dns hrd blkly ang silty, silty silic text in prt, chrt tan gry shrp frsh

dolo tr silty dolo, crm tan lt gry blkly dns flky arg f vf xln silty, silic text in prt chrt tan gry shrp frsh

dolo crm drk tan gry f vf xln gran arg blkly ang pcs, silty silic text, tr chrt wht lt gry shrp frsh

dolo silty dolo, tan lt gry f vf xln dns hrd blkly flky silic text, chrt gry tan frsh shrp opa

dolo crm gry drk tan vf xln dns ang arg silty, silic text in prt.

dolo silty dolo, tan gry f vf xln gran blkly and silty tr silic text, samples very fine and poor quality

aa, lst wht off wht f sli med xln blkly flky ang, chrt in prt, chrt wht shrp frsh opa

shl lt gry, pale green silty soft gritty, ratty, shl drk gry brn silty muddy soft,

shl gry drk gry brn silty muddy soft, lst tan drk tan f vf lxn blkly dns ang hrd, chrt wht shrp frsh opa

shl gry green blk, soft muddy silty ratty, lst tan crm off wht f xln blkly ang foss frags chrt aa in spl

lst tan off wht f xln blkly ang tr gran tr foss frags, chrt wht shrp frsh opa

shl gry lt gry, drk gry/green silty, bedded, tr banded, silty, tr pyritic, tr gas bubs

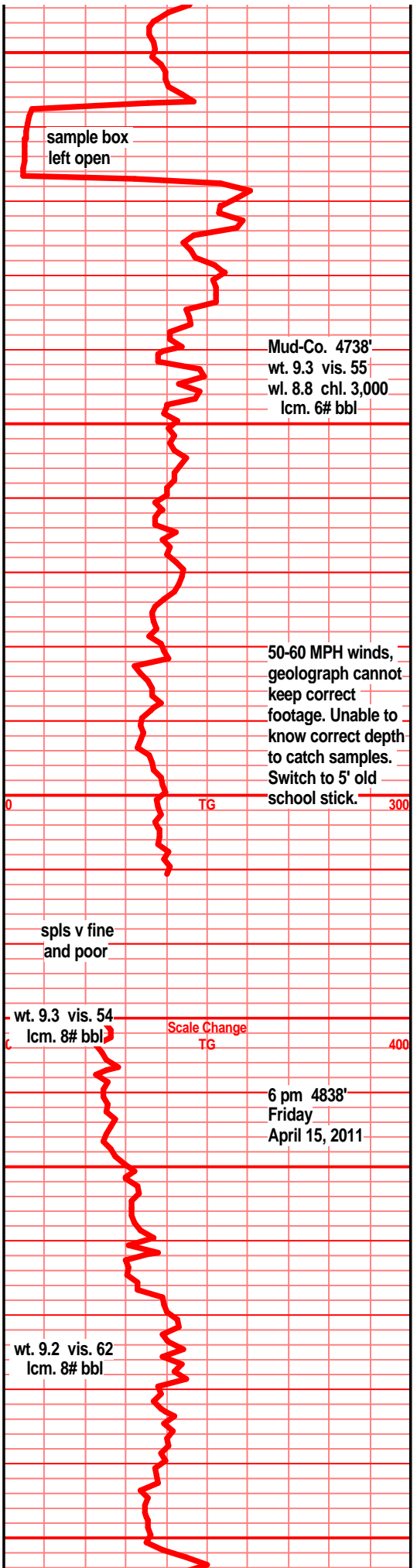
shl gry green brn blk, silty gritty, pyritic in prt, tr bedded

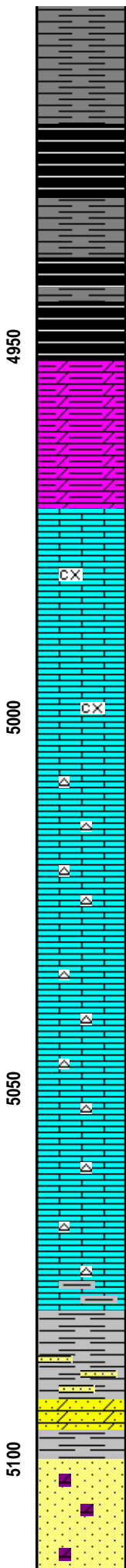
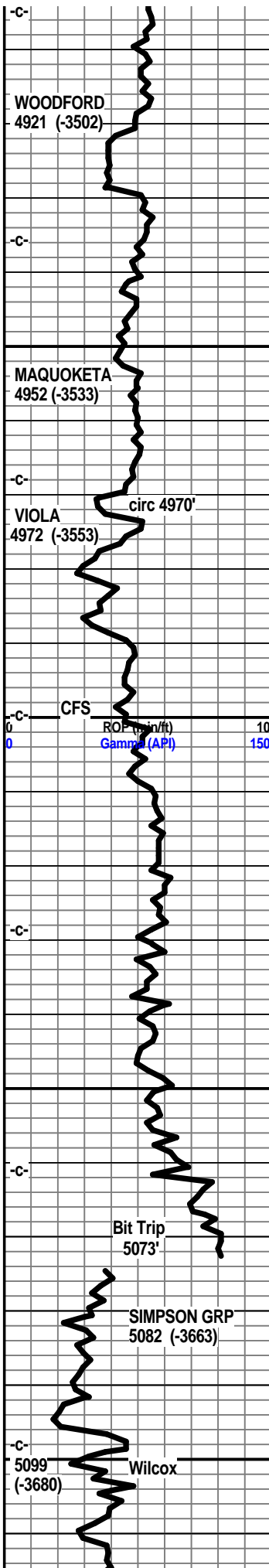
shl drk gry drk gry/green brn silty gritty gran in prt, tr pyritic

shl gry drk gry/green, brn silty gritty bedded, tr pyritic,

shl gry drk gry brn/green silty gritty

shl gry drk gry blk, silty, gritty





shl gry, drk gry, gry brn, blk silty gritty, bedded/banded,

shl blk, reddish brn/blk, blk ang pcs, soft, tr pyrite inclu, abun gas bubs

shl blk, drk reddish brn/blk, blk ang soft pcs, blk carb, silty/gritty in prt

shl blk, drk red/brn, silty blk ang pcs, carb, wxy grsy text, abun gas bubs

shl aa, drk gry brn/blk silty gritty, gran, soft tr grsy stain, gas bubs, tr vfn grnd snd grn inclu, ang grns, prly strd, much pyritic fill, tr sst clr vit f sli med grnd clstrs, sub ang/ang grns, clay fill, min fill, hvy pyr fill, dolo, shly dolo, tan lt tan/gry soft silty mushy

lst wht off wht, lt gry tint, f sli med xln, blk ang, sub chlky, flky pcs, inter xln por, pyritic fill, spls wsh wht

lst wht off wht f sli med xln, blk ang pcs, sub chlky in prt, fair vis inter xln por, tr foss frags, v sli stain, filmy SFO, nodor, 2-3 pcs only, lst off wht lt gry f sli med xln blk dns hrd ang, tr inter xln por, pyritic, sub chlky, flky

lst wht off wht, tr green tint, tr gry tint, f med xln blk ang tr flky, tr sub chlky, soft, gran tr foss frags,

lst crm wht off wht, tr gry/green tint, f sli med xln bky ang dns, tr sub chlky tr foss frags, incr chrt dull tan/brn shrp frsh foss opa

lst crm tan lt brn f xln bky ang hrd tr flky tr sub chlky tr foss frags, pyritic in prt, chrt tan dull tan brn shrp frsh foss opa

lst wnt off wht crm tan mott f xli med xln sub chlky gran flky, tr foss frags, trashy spls, much splintery shls

lst crm tan off wht mott, f xli med xln, flky tr sub chlky tr foss frags, chrt in prt, chrt tan dull brn shrp frsh foss opa

lst tr dolo in prt, crm tan drk tan f vf xln gran gritty, sub chlky tr foss frags, chrt in prt, chrt tan dull tan lt brn shrp frsh foss,

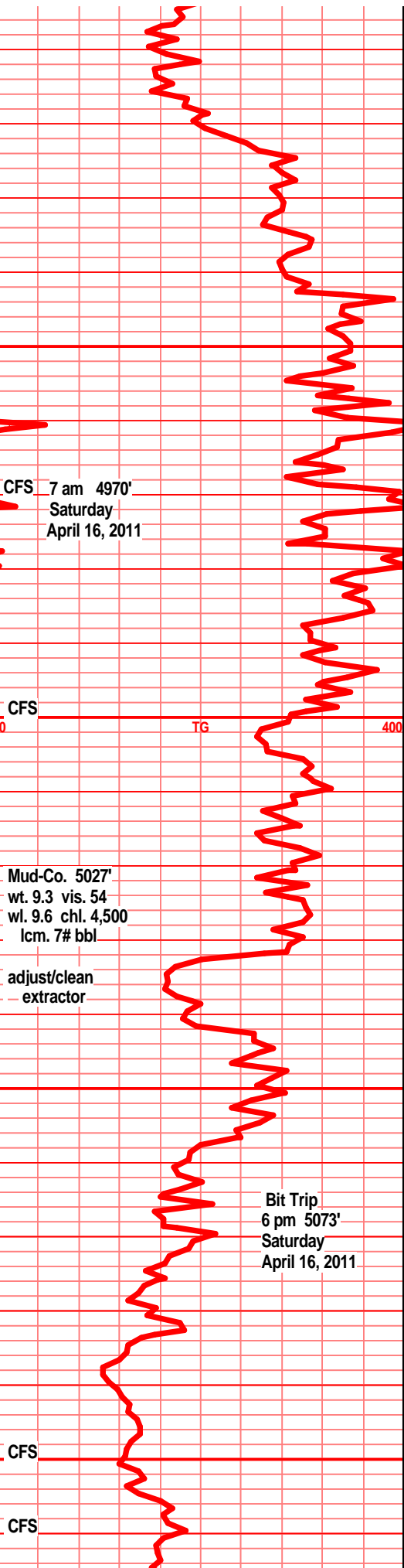
lst tan crm lt brn vf xln dns hrd blk chrt in prt, chrt lt tan brn shrp frsh, spls very fine!! poor

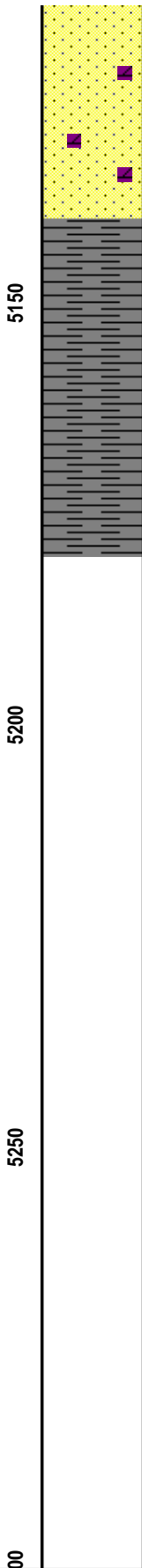
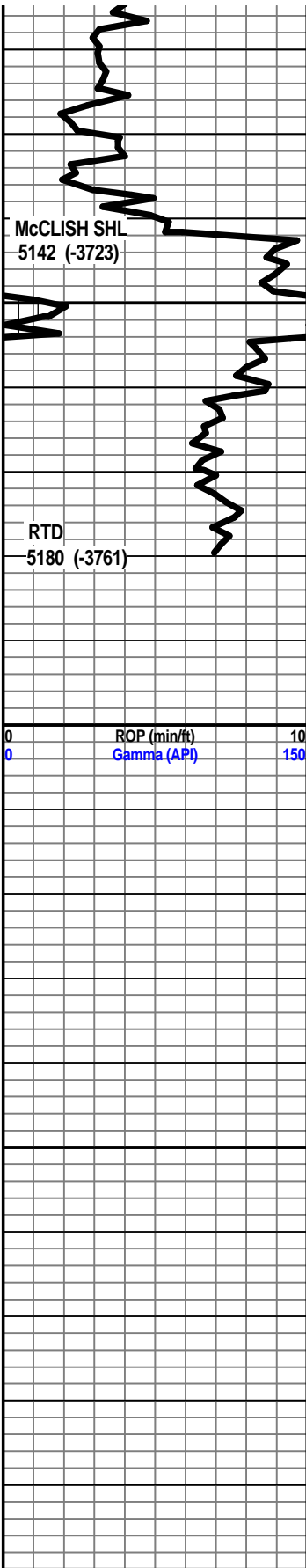
shl gry teal grn w/snd grn inclu, sst gry green fn grnd clstrs, dolo in prt, sub ang w/srtd, w/cem, tr glau, clay fill, arg calc in prt

sst gry green clstrs, f grnd, ang/sub ang grns, f/prly srtd, sub fria to tite, silic cem, tr glau, min fill, mstly tite dns blk ang clstrs

sst aa, sst clr lt gry clstrs, f grnd, sub rded, w/srtd, sub fria to fria, prly cem, silic cem, tr dolo in prt, tr min fill, tr glau,

sst clr lt gry clstrs (w/tan brn fn dolo xln fill), f





grnd sub rded to rded grns w srtd, sub fria to fria, prly cem, silic cem, tr glau, min fill, tr clay fill arg

sst clr lt gry clstrs, f grnd sub ang, mstly rded grns, w srtd, prly cem, silic cem, sub fria, tr clay fill, tr arg, tr glau, blk min fill, tr tan brn inter grain dolo xln fill

shl drk gry green, teal green, tr w/snd grn inclu, tr pyritic

shl drk gry, gry/green, teal green, slick wxy grsy in prt, tr splintery

shl gry drk gry, green, teal green, wxy grsy, snd grn inclu, tr pyritic, splintery in prt

shl drk gry, gry/green, teal green, wxy grsy, slick, snd grn inclu, tr glau, pyritic, splintery in prt

