

Timothy G. Pierce

Petroleum Geologist

GEOLOGIST'S REPORT DRILLING TIME AND SAMPLE LOG

COMPANY R & B Oil and Gas, Inc.

ELEVATIONS

LEASE Saddler #2

KB 1471'

FIELD McGuire-Goemann

DF _____

LOCATION S/2 SE SW

SEC 15 TWPSP 32S RGE 10W

GL 1462'

COUNTY Barber STATE Kansas

Measurements Are All
From Kelly Bushing

CONTRACTOR Landmark Drilling Rig #6

CASING

SPUD 4-07-2011 COMP 4-18-2011

RTD 4666 LTD 4664

MUD UP 3430 TYPE MUD Chemical

CONDUCTOR _____
SURFACE 8-5/8" at 279'
PRODUCTION 5-1/2" at 4663'

SAMPLES SAVED FROM 4000 TO RTD

DRILLING TIME KEPT FROM 3400 TO RTD

SAMPLES EXAMINED FROM 4000 TO RTD

GEOLOGICAL SUPERVISION FROM 3800 TO RTD

GEOLOGIST ON WELL Tim Pierce

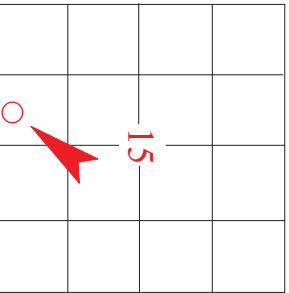
**ELECTRICAL
SURVEYS**
DIL / CN-CD
Log-Tech

FORMATION TOPS

ELECTRIC LOG

SAMPLE

Heebner Sh.	3465 (-1994)	3466 (-1995)
Lansing	3649 (-2178)	3650 (-2179)
Stark Sh.	4088 (-2617)	4086 (-2615)
Cherokee Sh.	4312 (-2841)	4316 (-2845)
Mississippi	4354 (-2883)	4357 (-2886)
Kinderhook Sh.	4570 (-3099)	4572 (-3101)
Viola	NA	4657 (-3186)



API # 15-007-23,671

REMARKS DST results were non-conclusive, but sample shows and electric logs indicate probable production from the Mississippi therefore the decision was made to run production casing and fracture treat the well.

There were no other zones of interest indicated by samples or electric logs.

Timothy G. Pierce

LEGEND

Anhydrite	Sandstone	Limestone	Shale	Carb Sh	Cherty LS	Chert	Dolomite

DRILLING TIME IN MINUTES PER FOOT

Rate of Penetration Decreases



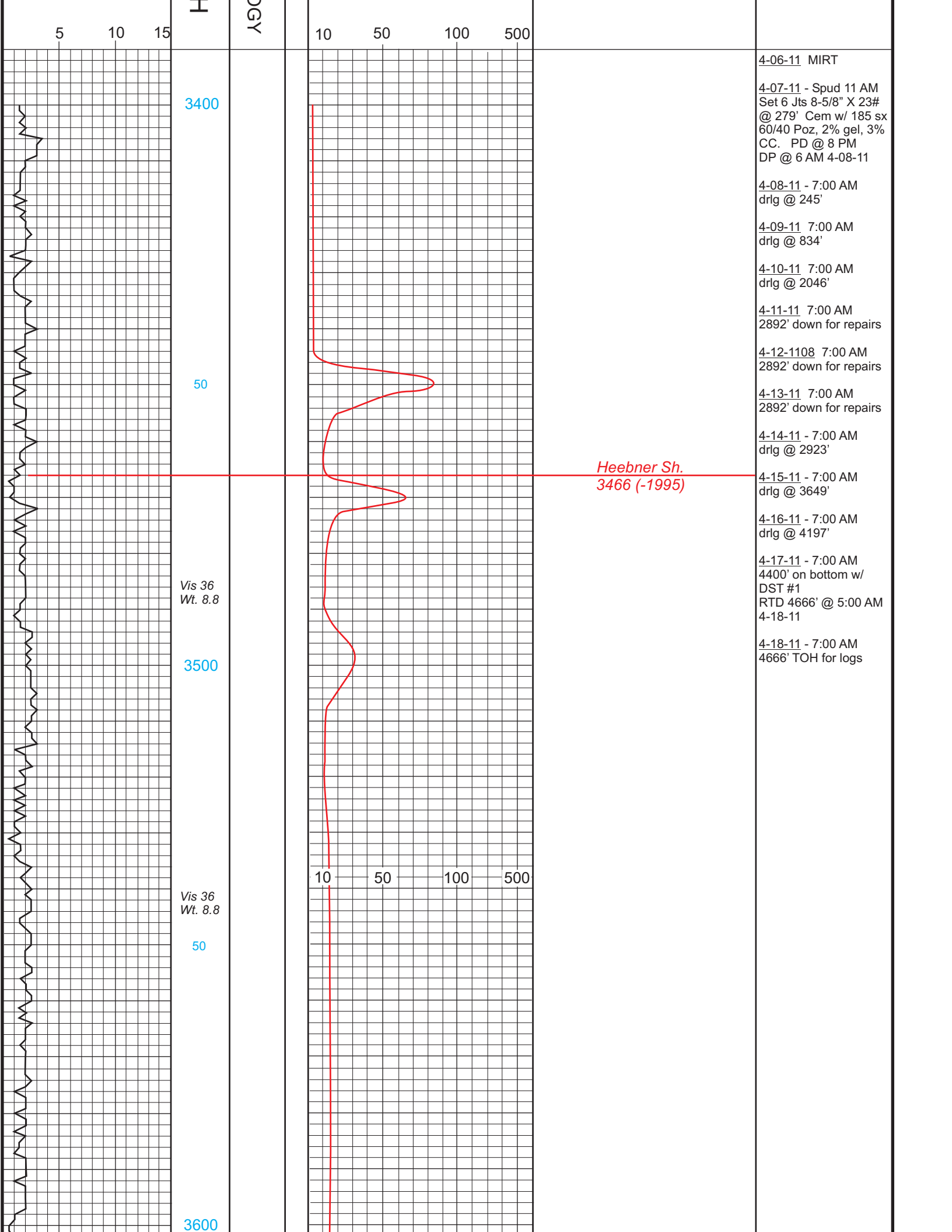
DEPTH

LITHOLOG

GAS SCALE

SAMPLE DESCRIPTION

REMARKS



4-06-11 MIRT

4-07-11 - Spud 11 AM
 Set 6 Jts 8-5/8" X 23#
 @ 279' Cem w/ 185 sx
 60/40 Poz, 2% gel, 3%
 CC. PD @ 8 PM
 DP @ 6 AM 4-08-11

4-08-11 - 7:00 AM
 drlg @ 245'

4-09-11 7:00 AM
 drlg @ 834'

4-10-11 7:00 AM
 drlg @ 2046'

4-11-11 7:00 AM
 2892' down for repairs

4-12-1108 7:00 AM
 2892' down for repairs

4-13-11 7:00 AM
 2892' down for repairs

4-14-11 - 7:00 AM
 drlg @ 2923'

*Heebner Sh.
 3466 (-1995)*

4-15-11 - 7:00 AM
 drlg @ 3649'

4-16-11 - 7:00 AM
 drlg @ 4197'

4-17-11 - 7:00 AM
 4400' on bottom w/
 DST #1
 RTD 4666' @ 5:00 AM
 4-18-11

4-18-11 - 7:00 AM
 4666' TOH for logs

3400

50

Vis 36
 Wt. 8.8

3500

Vis 36
 Wt. 8.8

50

3600

OGY

5 10 15

10 50 100 500

10 50 100 500

Vis 35
Wt. 8.8

50

Vis 38
Wt. 9.1

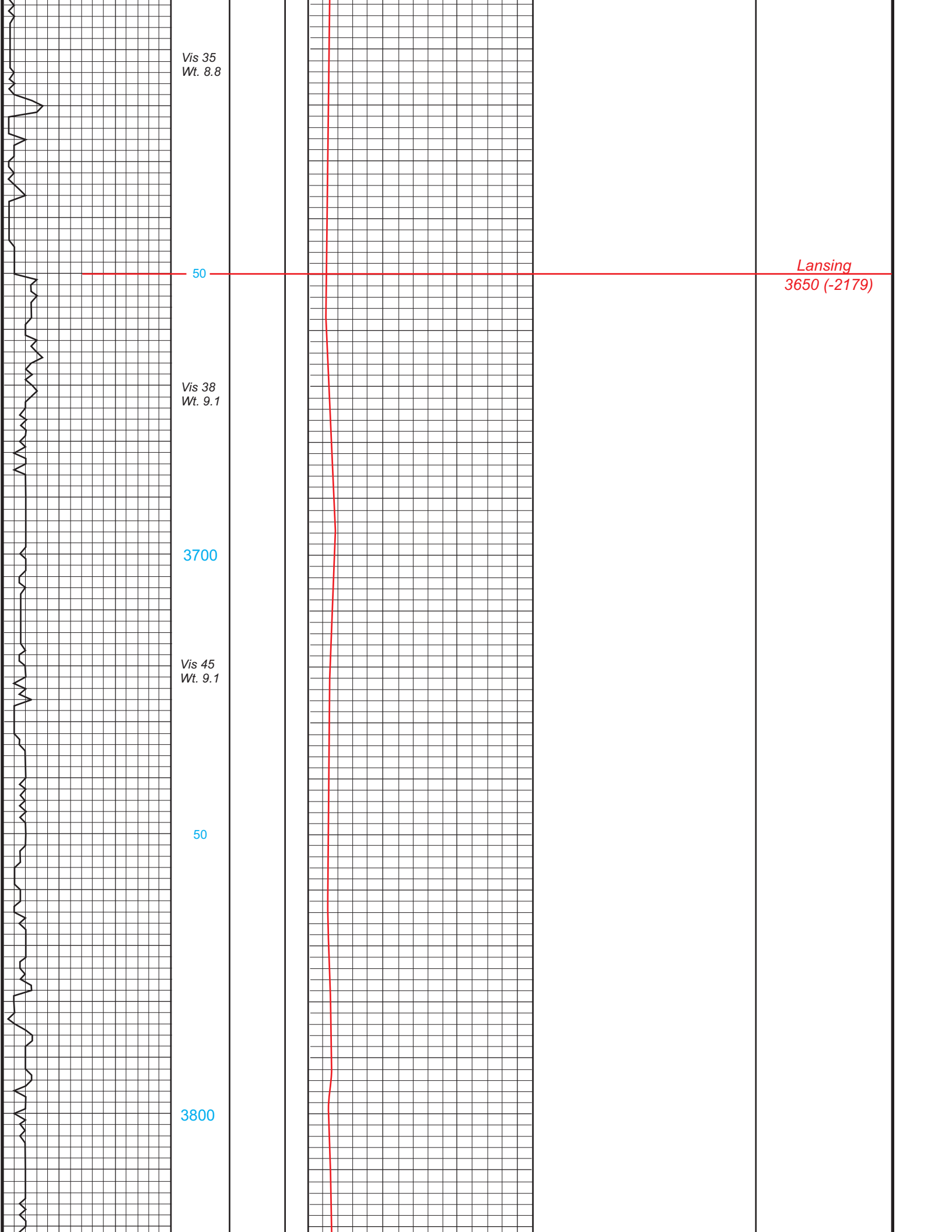
3700

Vis 45
Wt. 9.1

50

3800

Lansing
3650 (-2179)



Vis 44
Wt. 9.1

50

3900

50

Vis 44
Wt. 9.2

4000

10

50

100

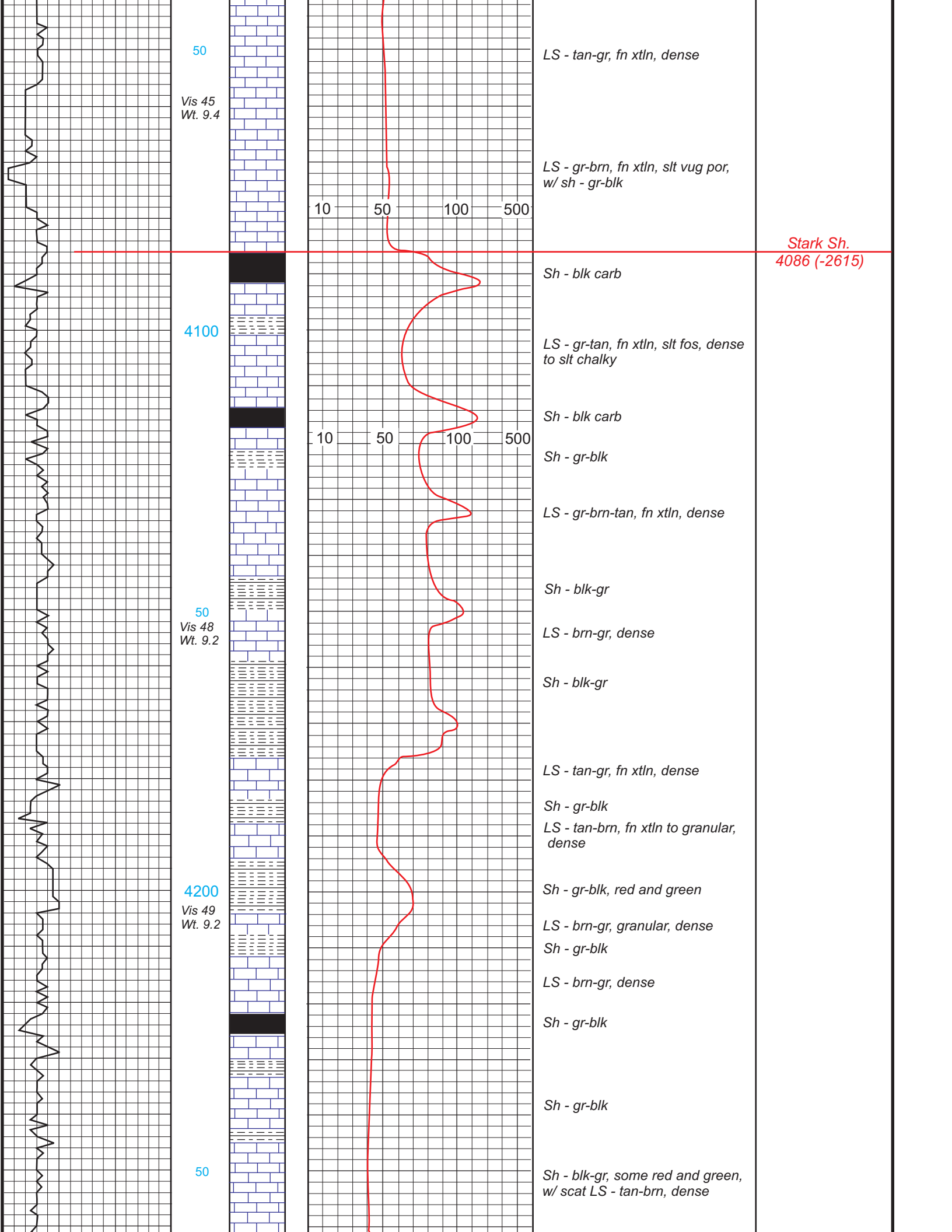
500

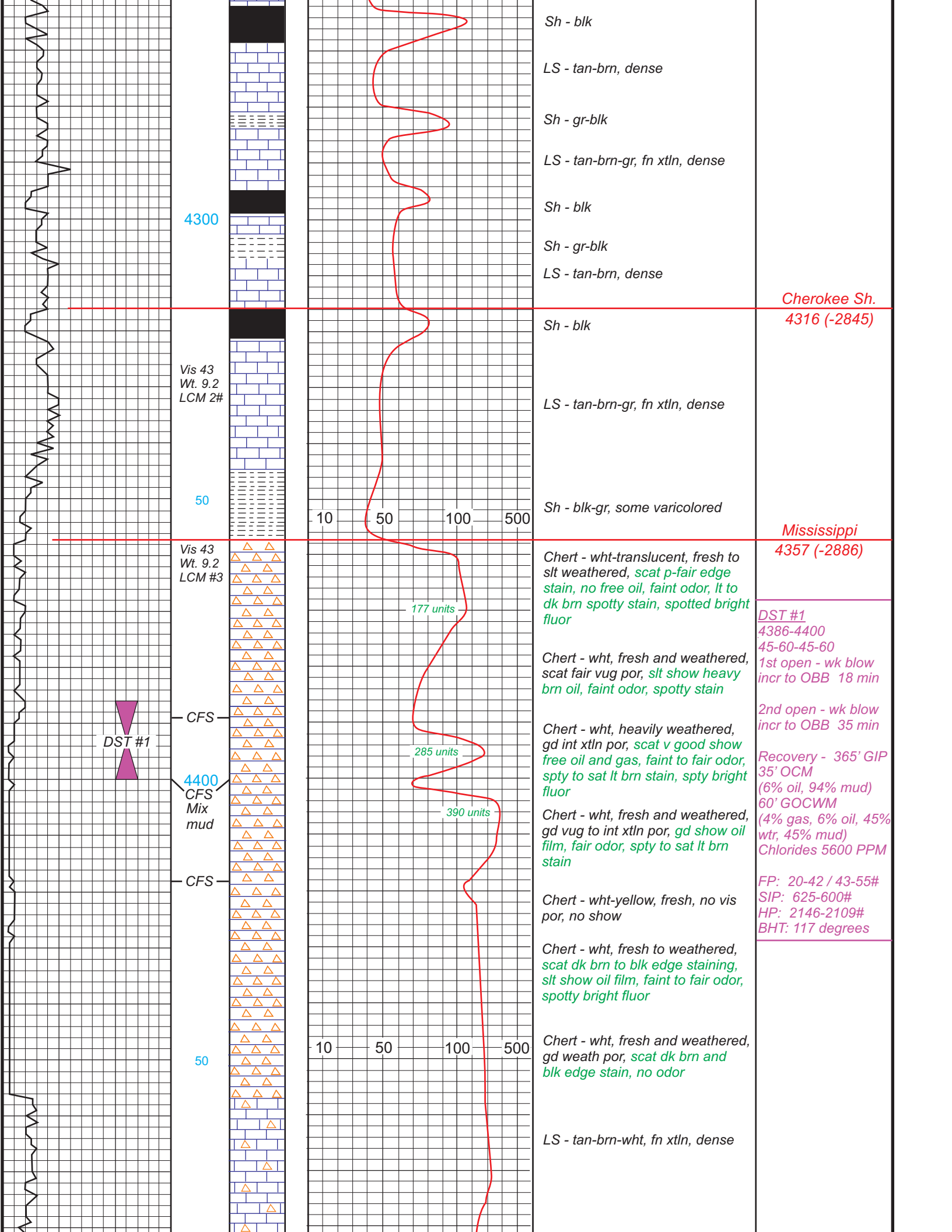
Adjust gas unit

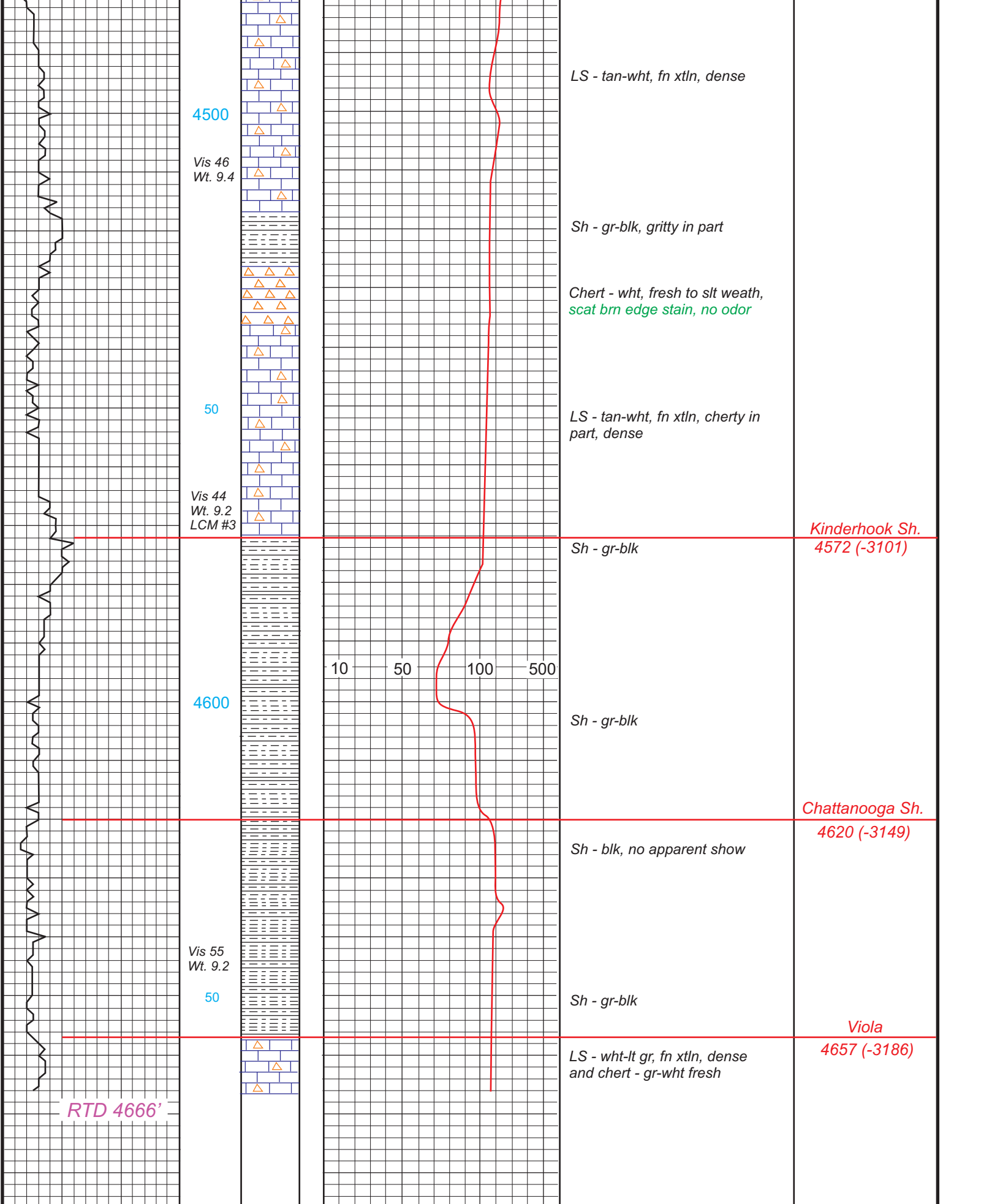
*LS - tan-lt gr-crm, fn xtln, f-gd
vug and fos cast por, no show*

LS - tan-brn, fn xtln, dense

LS - brn-tan-gr, fn xtln, dense







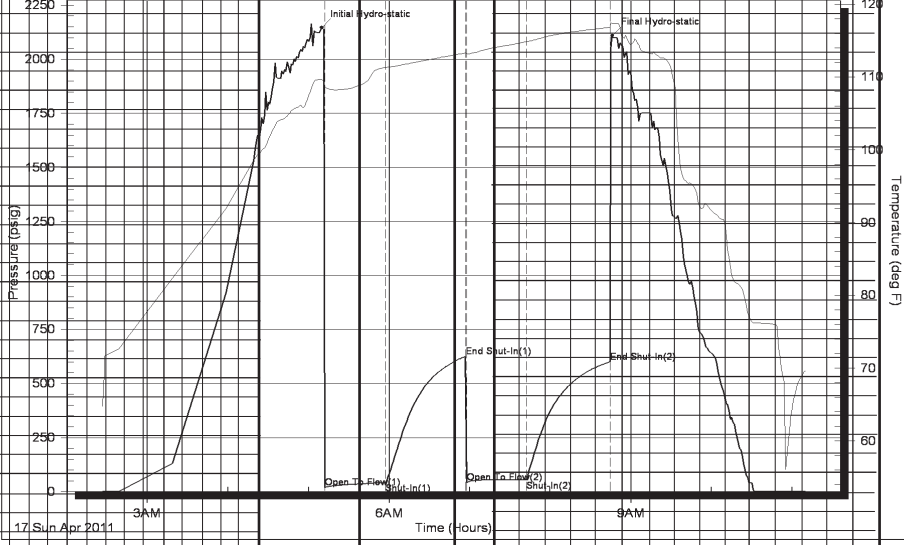
Serial # 8167 Inside R&B Oil & Gas Inc. 15-32s-10w Barber KS DST Test Number: 1

Pressure vs. Time

1467 Pressure

1467 Temperature

DST #1



4386-4400
 45-60-45-60
 1st open - wk blow
 incr to OBB in 18 min

2nd open - wk blow
 incr to OBB in 35 min

Recovery - 365' GIP
 35' OCM
 (6% oil, 94% mud)
 60' GOCWM
 (4% gas, 6% oil, 45%
 wtr, 45% mud)
 Chlorides 5600 PPM

FP: 20-42 / 43-55#
 SIP: 625-600#
 HP: 2146-2109#
 BHT: 117 degrees

