



Pro-Stake LLC

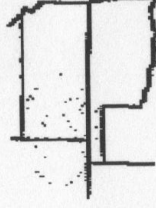
Oil Field & Construction Site Staking

P.O. Box 2324

Garden City, Kansas 67846

Office/Fax: (620) 276-6159

Cell: (620) 272-1499



e0622110-d

PLAT NO.

8793

INVOICE NO.

American Warrior

OPERATOR

LaForce #1-31

LEASE NAME

Hodgeman County, KS

COUNTY

950' FNL - 597' FBL

LOCATION SPOT

SCALE: 1" = 1000'

GR. INV. DATE: 2376.9'

DATE STAKED: June 21st, 2010

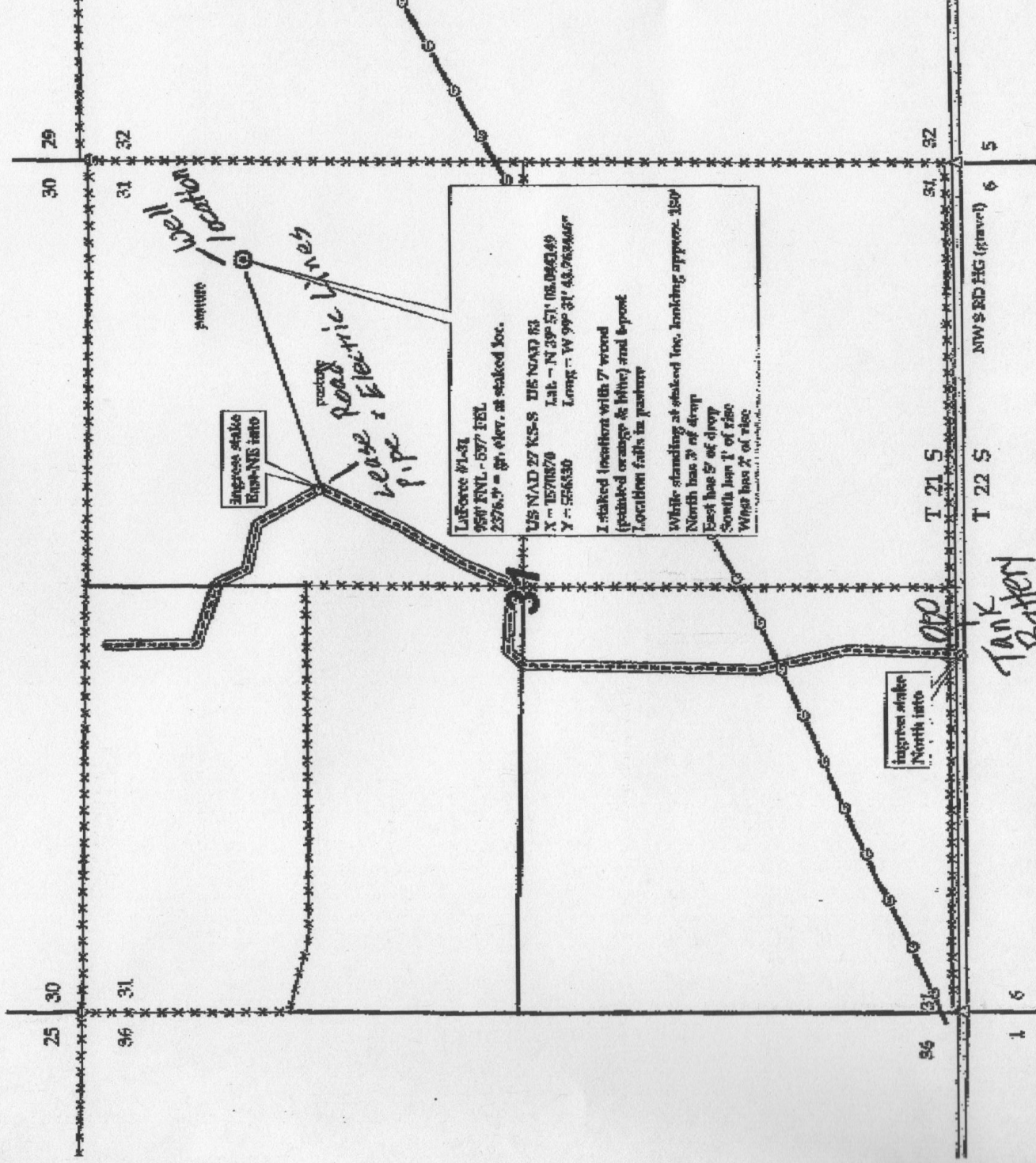
Directions: From the North side of Jeamore, Ks at the intersection of Hwy 156 & Hwy 283 - Now go 5.1 miles North on Hwy 283 - Now go 3 miles West on unknown road - Now go 1 mile North on NW 215 RD - Now go 2 miles West on NW S RD HG to the SE corner of section 31-21s-24w - Now go 0.6 mile West on NW S RD HG - Now go 0.8 mile North on trail - Now go approx. 1480' East-NE through pasture into staked location. Final impress must be verified with land owner or American Warrior

MEASURED BY: Ben R.

DRAWN BY: Gabe O.

AUTHORIZED BY: Cecil O.

This drawing does not constitute a monumented survey or a land survey plat. This drawing is for construction purposes only.



This is preliminary & non-binding