

BLACKLINE ARMSTRONG

COMPANY MULL DRILLING COMPANY
WELL CLETUS NO. 1-1
FIELD WILDGAT
COUNTY NESS
STATE KANSAS

LOCATION: 1479 E. 1/2 Sec. 1826 F.W.L. Sec. 1 T17S R23W
NE 1/4 Sec. 1826 F.W.L. Sec. 1 T17S R23W
NE 1/4 Sec. 1826 F.W.L. Sec. 1 T17S R23W

DATE: 5-19-11
DRILLER: [Name]
LOGGERS: [Names]

Table with columns: Date, Penetration Rate, Spd. at 400m, Formation, Sample, Log, Datum. Includes data for formations like ANHYDRITE, HEEBNER, TORONTO, LANSING, STARK, B/KANSAS CITY, PAWNEE, FORT SCOTT, CHEROKEE SHALE, CHEROKEE SAND, BASE PENN LST, MISSISSIPPI, and RTD.

REMARKS DUE TO THE LOW STRUCTURAL POSITION, THE DRILL-STEM TEST RESULTS, AND THE E-LOG CALCULATIONS IT WAS DECIDED TO PLUG THIS TEST WELL.

BIT RECORD table with columns: Make & Type, Serial No., Minutes, Depth In, Depth Out, Hours. Shows data for 14-14-15 and 14-14-15.

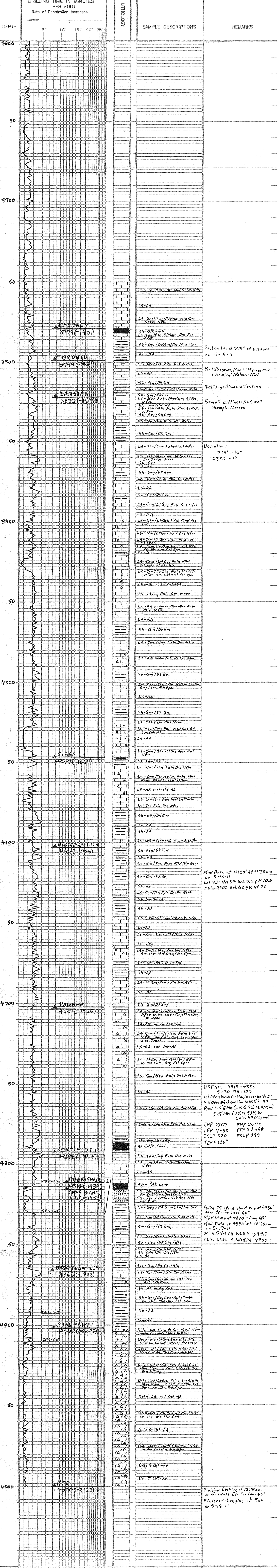
Respectfully submitted, Madeline M. Armstrong

Formation Log table with columns: Formation, Sample, Log, Datum. Lists formations from ANHYDRITE to TOTAL DEPTH.

Structural Position to: CHARTER PRODUCTION COMPANY, KISSINGER A NO. 1 C N2 NW SW SEC 1 T17S R23W

LEGEND: Symbols for Anhydrite, Salt, Sandstone, Shale, Carb sh, Limestone, Oil. Lims, Chert, Dolomite.

SCALE: 1" = 100'



DEPTH DRILLING TIME Minutes/Foot

COMPANY MULL DRILLING COMPANY
LEASE CLETUS NO. 1-1
LOCATION 1479 E. 1/2 Sec. 1826 F.W.L. Sec. 1 T17S R23W
COUNTY NESS STATE KANSAS

ELEVATION: 2378 KB