



Woolsey Operating Company, LLC

Scale 1:240 (5"=100') Imperial

Measured Depth Log

Well Name: Wiley Trust A GU #3
Location: Section 8 - Township 34 South - Range 11 West
License Number: 15-007-23687-0000
Spud Date: April 19, 2011
Surface Coordinates: 2310' FNL, 2640' FWL or S1/2 S1/2 N1/2
Field: Rhodes South
Bottom Hole Verticle Hole
Coordinates:
Ground Elevation (ft): 1391' K.B. Elevation (ft): 1402'
Logged Interval (ft): 4000' To: Total Depth (ft):
Formation: Kansas City Group ----> Simpson Group
Type of Drilling Fluid: Chemical Mud Displaced at 3373'
Region: Barber County, KS
Drilling Completed:

Printed by WellSight Log Viewer from WellSight Systems 1-800-447-1534 www.WellSight.com

OPERATOR

Company: Woolsey Operating Company, LLC
Address: 125 N. Market, Suite 1000
Wichita, KS 67202

GEOLOGIST

Name: Billy G. Klaver
Company: Woolsey Operating Co. LLC
Address: 125 N. Market, Wichita Kansas, 67202

COMMENTS

Surface Casing: Ran 6 joints 10 3/4" X 32.75#/ft new casing to 240' KB (tally 227') with 240 sx Class A, 2% gel, 3% cc. Cement did circulate.

Production Casing:

Deviation Surveys: 1/4 at 245', 1/4 at 1185', 1/4 at 1717', 1/2 at 2218', 1/2 at 2689', 3/4 at 3184', 1/4 at 3686', 1 1/4 at 4185', 1/2 at 4634'

Pipe Strap @ 4634', strap:4651.59', board: 4651.02', strap .57' long, No correction was made to the board.

Duke Drilling Rig #10 Bit Record:

#1 14 3/4" JZ-38 RR in at GL out at 245'. 245' in 3.5 hours.

#2 7 7/8" HTC GX 28C in at 245' out at

Gas Detector: Woolsey Operating Co. Gas Trailer #2

Mud System: Mud Co. Brad Bortz, Aaron Rush, Engineers

DSTs: Trilobite Testing, Gary Pevoteaux, Tester

OH Logs: Superior Well Services, Dual Induction Laterolog w/SP, CNL-FDC w/PE, GR and Caliper.

DSTs

DST #1 Cherokee Sand-Mississippi, 4518'-4634'. 30"-60"-60"-120", Strong blow BOB in 50 seconds, GTS in 11 minutes. Recovered: 180' SOGCM (4%O, 24%G, 72%M), 195' SGCM (4%G, 96%M). IHP 2167, IFP 85-105, ISIP 1092, FFP 102-103, FSIP 1099, FHP 2152. BHT 124 degrees. Gas flow rates on 3/8" choke. IFP: 20" 71 MCF, 30" 75 MCF. FFP: 10" 97 MCF, 20" 78 MCF, 30-40" 67 MCF, 50-60" 66 MCF.

CREWS

Joe Livingston, Toolpusher

Scott Edwards, Days

Colby Crawford, Evening

Alex Ordonez, Morning

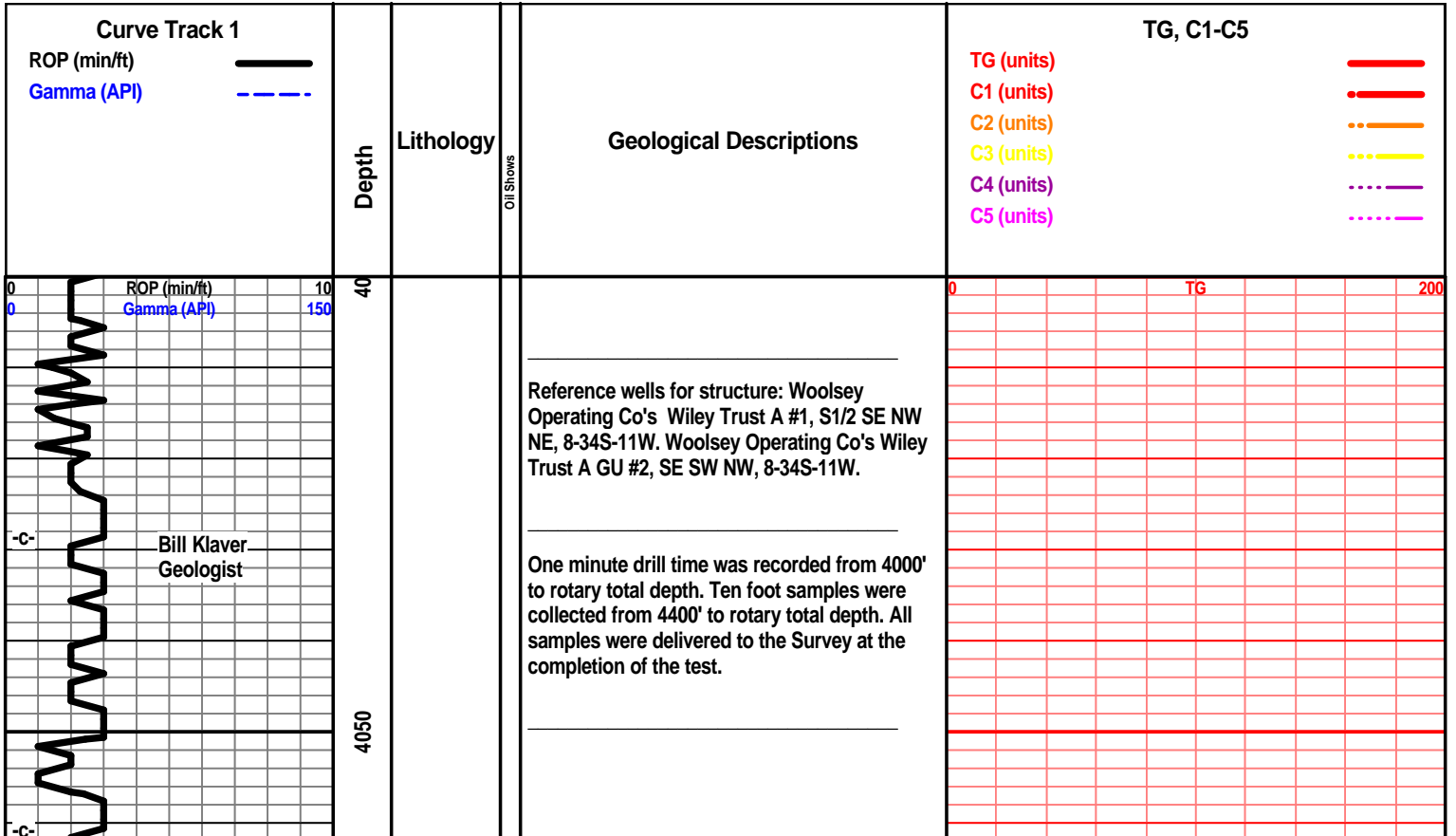
Ron Burns, Relief

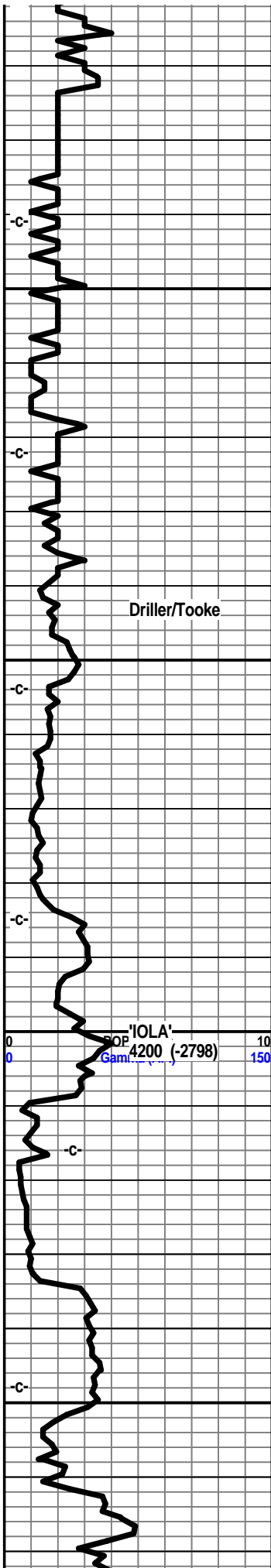
ROCK TYPES

	Anhy		Congl		Lmst		Black sh
	Bent		Sdy dolo		Mrlst		Gry sh
	Brec		Shy dolo		Salt		Shale
	Cht		Dol		Shale		Shyslstst
	Clyst		Gyp		Sltst		Sltstsh
	Coal		Sdy lmst		Ss		

ACCESSORIES

MINERAL		Chlorite		Pelec		Grysh	
	Anhy		Dol		Gryslt		
	Arg		Sand		Lms		
	Bent		Silty		Sandylms		
	Bit	FOSSIL		Plant		Sh	
	Brecfrag		Algae		Strom		Sltstn
	Calc		Amph		Fuss	TEXTURE	
	Carb		Belm		Oomoldic		Boundst
	Chtdk		Bioclst	STRINGER		Chalky	
	Chtlt		Brach		Anhy		Cryxln
	Dol		Bryozoa		Bent		Earthy
	Ferrpel		Cephal		Coal		Finexln
	Ferr		Coral		Dol		Grainst
	Glau		Crin		Gyp		Lithogr
	Gyp		Echin		Ls		Microxln
	Marl		Fish		Mrst		Mudst
	Nodule		Foram		Sltstrg		Packst
	Phos		Fossil		Ssstrg		Wackest
	Pyr		Gastro		Carbsh		
	Salt		Oolite		Clystn		
	Sandy		Ostra		Dol		
	Silt						



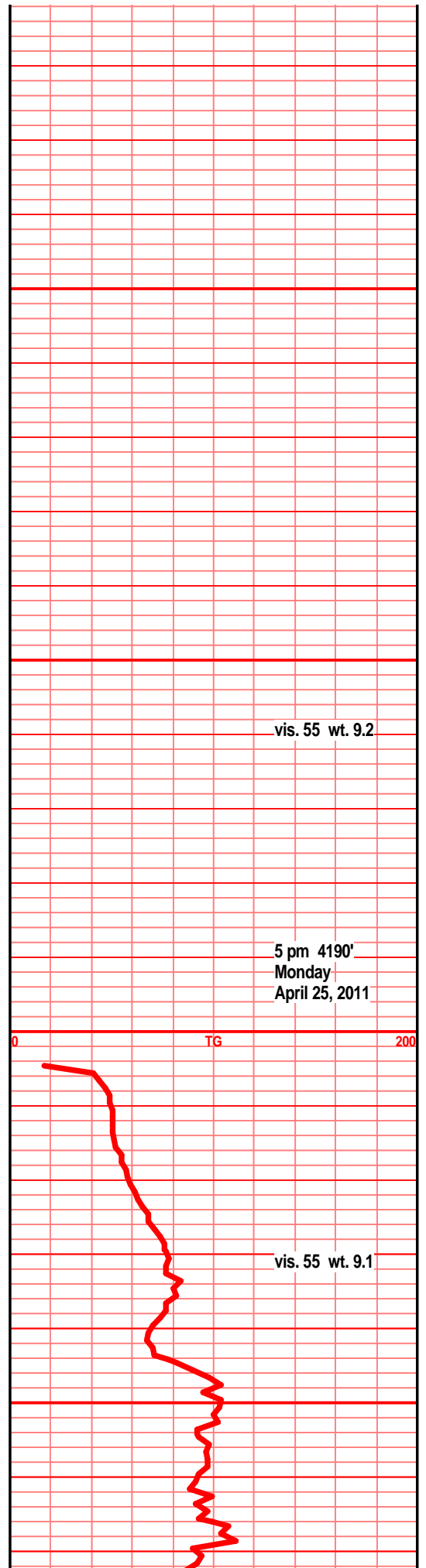


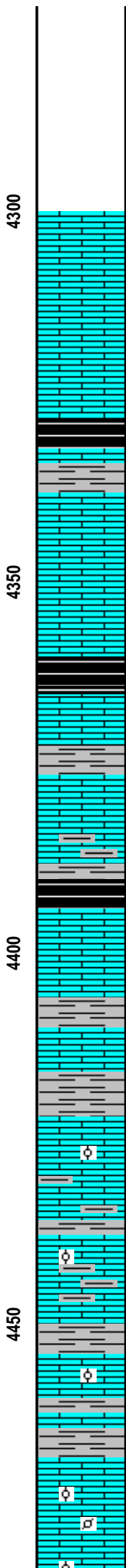
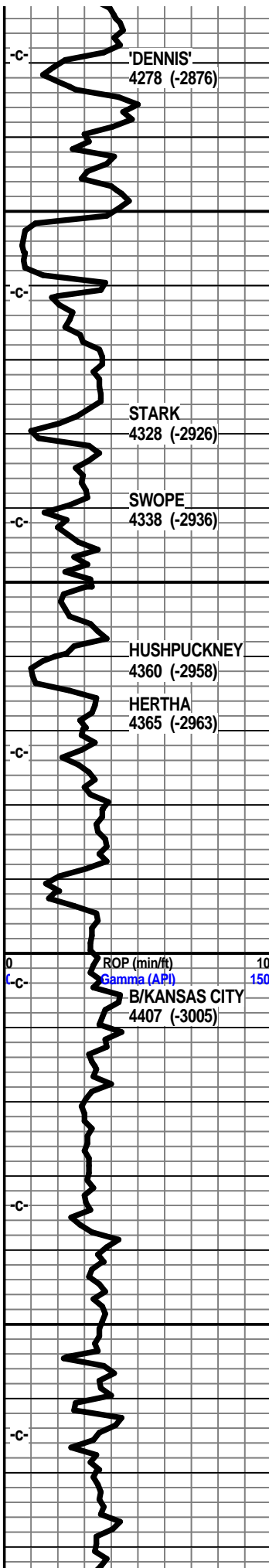
7 am Progress:

- April 19, 2011 MIRT
- April 20, 2011 WOC, plug down 5 am
- April 21, 2011 Drilling at 1247'
- April 22, 2011 Drilling at 2140'
- April 23, 2011 Drilling at 2875'
- April 24, 2011 Drilling at 3316'
- April 25, 2011 Drilling at 3955'
- April 26, 2011 Short trip at 4465'
- April 27, 2011 DST #1 at 4634'
- April 28, 2011 Trip, hole in DP at 4781'
- April 29, 2011 Drilling at 4852'
- April 30, 2011 Logging at 5135'

E-Log Tops:

- Herington
- Onaga
- LeCompton
- Kanwaka
- Elgin Sand
- Heebner
- Toronto
- Douglas Grp
- Douglas Shale
- Haskell
- Quindaro
- Kansas City 'F'
- Kansas City 'Iola'
- Kansas City 'Dennis'
- Stark
- Swope
- Hushpuckney
- Hertha
- B/Kansas City
- Pawnee
- Cherokee Grp
- Cherokee Sand
- Mississippi
- C3
- C2A
- C2
- C1
- Osage
- Compton
- Kinderhook
- Woodford
- Maquoketa
- Viola
- Simpson Grp
- Wilcox
- McLish Shl





Oil and Gas Show Legend

- Gas
- Even Stain/Saturation
- Spotted Stain/Saturation
- Questionable
- Dead/Gilsonitic

shl gry, drk gry blk, blk carb, wxy grsy pcs, lst tan crm lt brn f xln blk ang sub chlky foss frags

lst crm buff tan f xln sub chlky gran flky foss frags, calc xln fill, shls gry med gry silty soft gritty

lst gry buff tan f vf xln gran blk an pcs, foss frags, calc xln fill, tr arg, shls gry gr brn green silty gritty

lst lt gry tan lt brn, f vf xln dns blk ang gran tr arg, tr foss frags, shl gry brn silty calc gritty

lst tan gry lt brn f vf xln blk dns gran arg, ang, shl gry drk brn/gry silty gritty

lst tan lt gry brn f vf xln dns hrd blk ang micro foss frags, calc xln fill, shls gry lt/med gry silty gritty calc

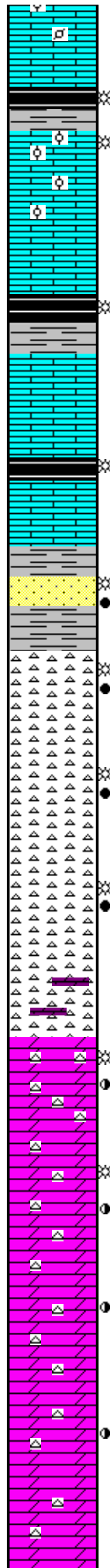
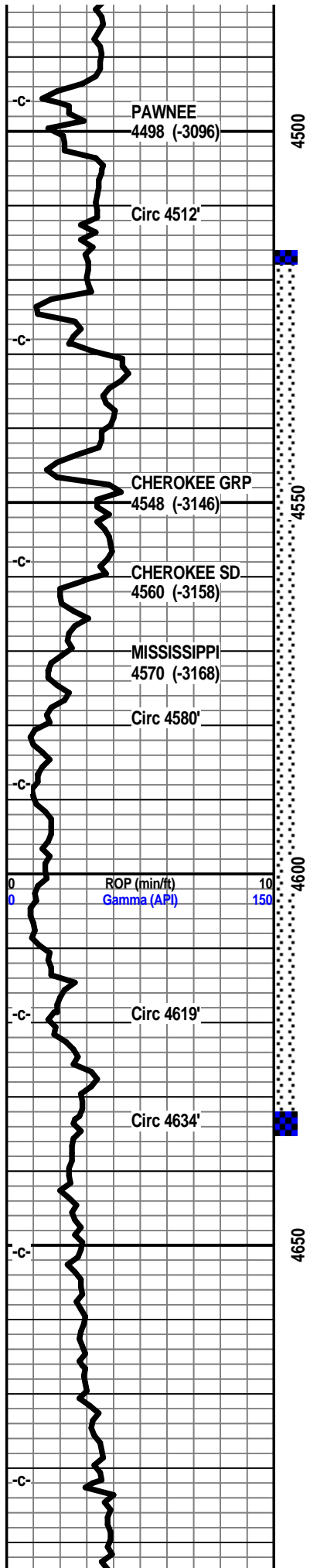
shl gry lt med gry brn, lst tan crm buff f sli med xln blk flky tr sub chlky foss frags, micro ool, calc xln fill

lst crm buff off wht tan f sli med xln blk flky tr sub chlky foss frags, micro ool, calc xln fill,

spls all gry blk spintery shls, lst crm buff tan f xln blk ang sub chlky, foss frags, foss micro



7 am 4465'
Short Trip
Tuesday
April 26, 2011
Mud-Co. 4470'
wt. 9.5 vis. 63
wl. 11.2 chl. 4000



ool, calc xln fill

shls aa, 1st tan crm buff f sli med xln, blk ang, tr sub chlky, foss frags, micro ool, pelletal

shl bk carb, wxy, grsy, gas bubs, shl gry, 1st crm tan f xln blk ang, sub chlky, tr chlky, crumbly, foss frags, foss ool, pelletal in prt, tr calc xln fill, tr inter xln por, fair gas bubs, dull yllw UV, nodor

1st crm buff tan f vf xln dns hrd blk ang tr sub chlky, tr calc fill, foss frags, micro ool/pelletal, poor spls, all spintery shls

shl gry, blk, blk carb, grsy, tr gas bubs, 1st tan crm f vf xln dns hrd blk ang sub chlky micro foss, xln fill aa

spls all splintery gry blk green shls, tr 1st tan buff vf xln dns hrd blk sub chlky foss frags ??

shl blk carb, 1st tan buff vf xln dns hrd blk dns tr sub chlky, spls all gry blk, gry/drck green spintery shls, pp spls

shls gry drk gry blk brn, gry/drck green silty gritty, ratty, tr calc in prt. trashy spls, 1 sst clstr-tan lt brn vf grnd sub ang grns, w/srtd, sub fria, inter grn por, brn stain, vssfo, nodor

chrt wht off wht, milky, lt gry, shrp frsh opa blk ang, tr sli weath text, w/brn stain, chrt wht lt gry shrp frsh w/weath gran text edge, moldic por, SFO, brn stain, gas bubs fair odor/brkn

chrt off wht milky, gry, smokey, shrp frsh blk opa w/tr weath edge, brn stain gas bubs, chrt tan brn mott, shrp frsh fw/weath trip text edge, moldic/vug por, SFO, stain, abun gas bubs gd odor

chrt lt gry, gry, smokey, milky shrp frsh blk ang opa, msily shrp w/weath gran frac edge brn stain, gas bubs/brkn, chrt tan brn gry mott, shrp frsh opa w/weath trip text edge, pp moldic por, vug por, brn stain, SFO/brkn, abun gas bubs, good odor, dull UV

dolo, chrty dolo, tan crm f vf xln gran blk ang pcs, inter xln por, glau, w/gry smokey chrt inclu, weath trip text, moldic/vug por, fair stain, fair SFO, gas bubs, odor, dull UV.

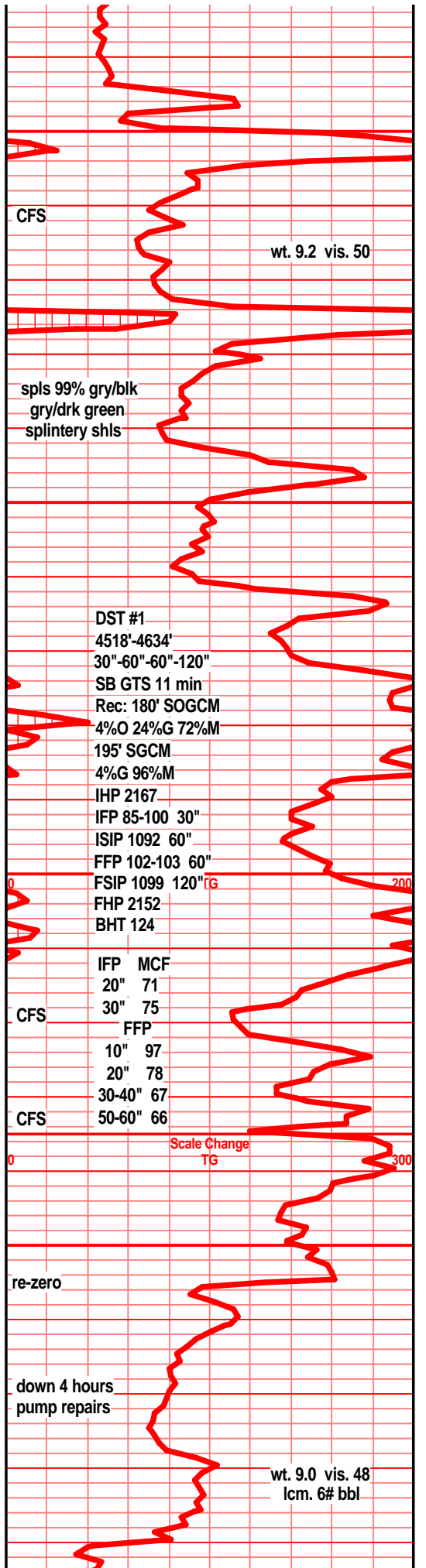
dolo crm tan tr lt gry f vf xln gran blk dns silic text, tr glau, chrty in prt, brn stain, tr gas bubs, gry smokey chrt inclu, shrp frsh, stain along chrt dolo contact, chrt has tr weath trip text, moldic por, stain sso, gas bubs, sli odor, filmy rbsfo on spl tray water

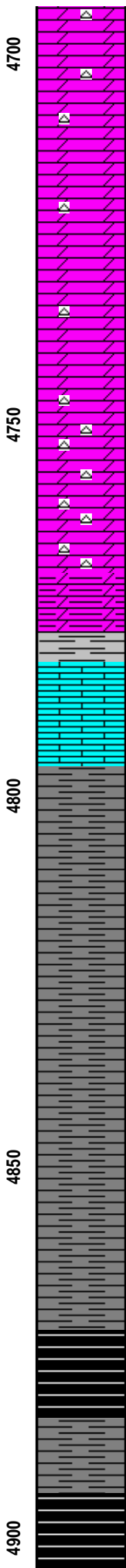
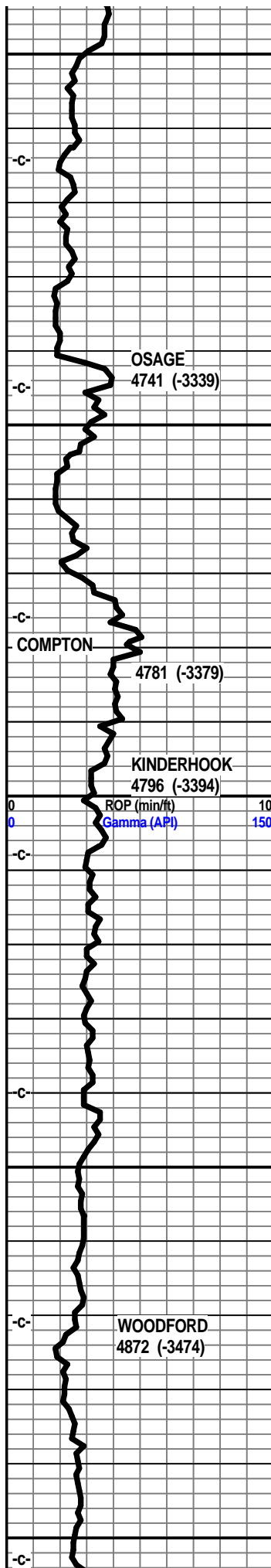
dolo crm tan lt gry green tint, f vf xln gran blk ang dns, tr silic text, tr brn stain, chrt off wht lt gry shrp frsh opa, tr w/weath text, tr stain odor?

dolo tan drk tan, lt gry f vf xln blk dns ang hrd, tr glau, tr silic text, tr brn stain, sli odor? chrt wht lt gry shrp frsh, 1st tan lt brn f xln dns hrd sub chlky blk dns

dolo drk tan lt gry gry f vf xln dns hrd blk glau, bec silty arg, tr silic text, chrt wht off wht lt gry shrp frsh

dolo drk tan, lt gry f vf xln, blk ang tr gran





dolo drk tan, lt gry f vf xln, blk ang tr gran silty, arg, tr chrt wht lt gry shrp frsh opaq

dolo drk tan gry f vf xln dns hrd blk ang silty, tr silic text, tr glau, in silty w/depth,

dolo gry lt gry f vf xln blk ang gran dns silty, incr shly w/depth, tr silic text, tr glau, tr chrt lt gry smokey shrp frsh

dolo siltstn mdstn lt gry tr med gry f vf xln blk dns hrd arg gritty gran in prt, tr chrt, tr chrt gry shrp

dolo med gry f vf xln silty gritty arg, incr shly w/depth bec chrt in prt, chrt gry dull tan shrp frsh opaq foss

dolo gry drk tan gry vf xln gran gritty silty, arg, tr stain, chrt, chrt dull tan gry shrp frsh foss opaq

dolo silty dolo, tan gry f vf xln gran blk dns hrd, chrt, chrt wht gry shrp frsh blk opaq foss

dolo silty dolo, tan lt gry vf xln dns hrd blk ang arg, v chrt in prt, chrt wht lt gry shrp frsh opaq

dolo silty dolo lt gry tan f vf xln gran blk dns hrd ang, chrt, chrt wht shrp frsh foss,

tr gry green drk gry green shl, lst tan wht mstly wht, f sli med xln blk ang hrd, tr dolo, tr micro foss,

lst wht off wht f tr med xln blk ang hrd dns, tr micro foss frags, tr glau

shl gry med/drk gry silty gritty

shl gry med/drk gry, try blk, semi carb, silty gritty gran.

shl gry drk gry silty gritty, bedded tr pyritic bands

shl gry med drk gry silty gritty, pyritic, tr gas bubs

shl gry med gry, blk semi carb in prt, silty gritty gran in prt, tr pyritic bands

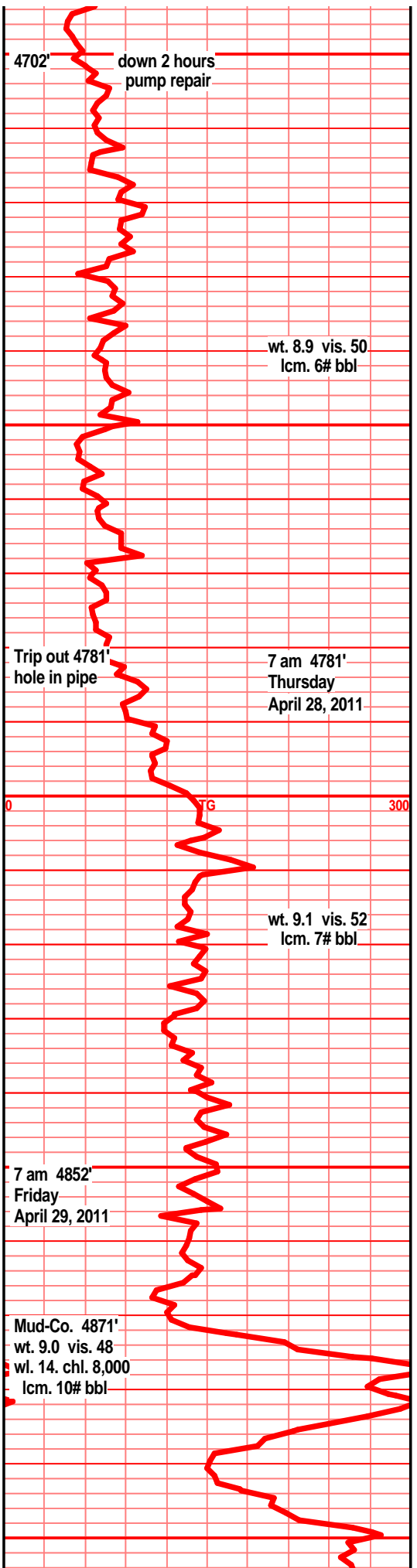
shl gry, drk gry, gry green silty gritty tr blk semi carb

shl gry drk gry brn blk silty gritty bedded, pyritic bands

shl blk, drk brn/red bky ang pcs, organic, carb in prt, silty gritty abun gas bubs

shl drk gry blk, blk drk brn blk ang pcs, abun gas bubs, wxy grsy txt

shl gry drk gry blk, carb in prt, drk brn/red/brn blk ang pcs, org, semi carb, wxy grsy txt, abun gas bubs



4702' down 2 hours pump repair

wt. 8.9 vis. 50 lcm. 6# bbl

Trip out 4781' hole in pipe

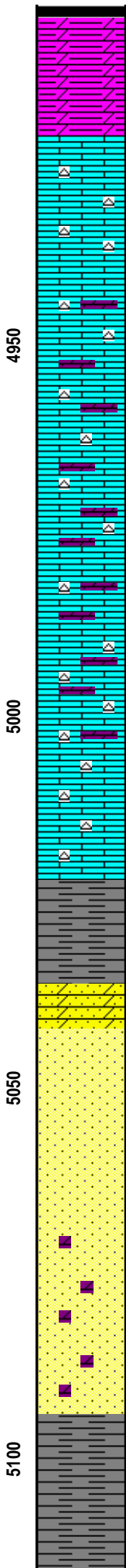
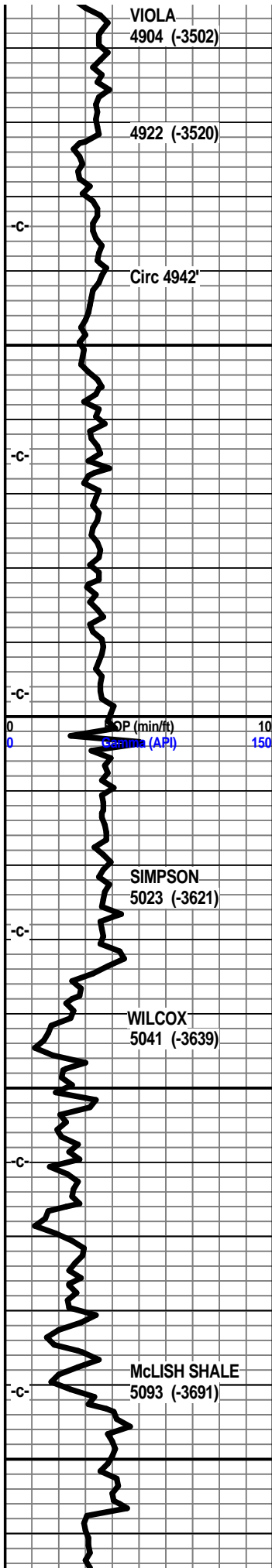
7 am 4781' Thursday April 28, 2011

0 300

wt. 9.1 vis. 52 lcm. 7# bbl

7 am 4852' Friday April 29, 2011

Mud-Co. 4871' wt. 9.0 vis. 48 wl. 14. chl. 8,000 lcm. 10# bbl



shl, shly silty dolo, brn gry gritty silty, pyritic, snd grn inclu, gas bubs

dolo silty shly dolo gry lt gry soft, gritty gran, pyritic, muddy, tr gas bubs, tr snd grn inclu,

lst wht off wht f vf xln blkly dns ang hrd, tr sub chlky, chrt wht lt gry shrp frsh opa, foss, poor spls,

lst wht off wht, tr lt gry tint, f sli med xln, blkly flky tr interxln por, pyritic, tr chrty, chrt wht shrp frsh foss in prt.

lst dolo in prt, tan lt gry lt brn f vf lxn blkly ang gran dns hrd tr foss frags, chrty in part, chrt tan shrp frsh

lst crn tan f sli med xln blk flky tr sub chlky foss frags, lst dolo in prt, tan lt brn tr lt gry vf xln gran dns hrd chrty, chrt tan shrp frsh

lst dolo in prt, tan lt brn f vf xln dns hrd gran, tr inter xln por, mstly dns hrd, chrty in prt, chrt tan dull tan shrp frsh

lst crm tan off wht f sli med xln blkly flky foss tr sub chlky, lst/dolotan lt brn f vf xln gran blkly dns hrd, chrty, chrt tan dull tan gry shrp frsh foss opa

lst dolo in prt tan crm drk tan f vf xln dns hrd blkly pyritic, blkly tr micro foss frags, chrty, chrt dull tan gry shrp frsh foss opa pyritic

lst dolo in prt f sli med xln bky ang sub chlky in prt, tr sndy gritty, tr foss frags, chrty, chrt tan lt gry shrp frsh foss opa

lst crm tan lt brn f vf xln gran blkly dns tr sub chlky tr foss frags, chrty, chrt tan dull tan/gry shrp frsh foss opa

lst crm tan lt gry/tan aa, f xln gran blkly dns hrd chrty, chrt full tan gry shrp frsh

shl gry blk green, teal green silty slick snd grn inclu, pyritic, sst gry clstrs, f grnd, sub ang grns, w/srtd, w/cem, dolo in prt, pyritic fill, NS

sst clr lt gry clstrs, f vf grnd sub ang/sub rded, fria, prly cem, silic cem, w/srtd, v fria, tr min fill, tr calc matrix cem, NS

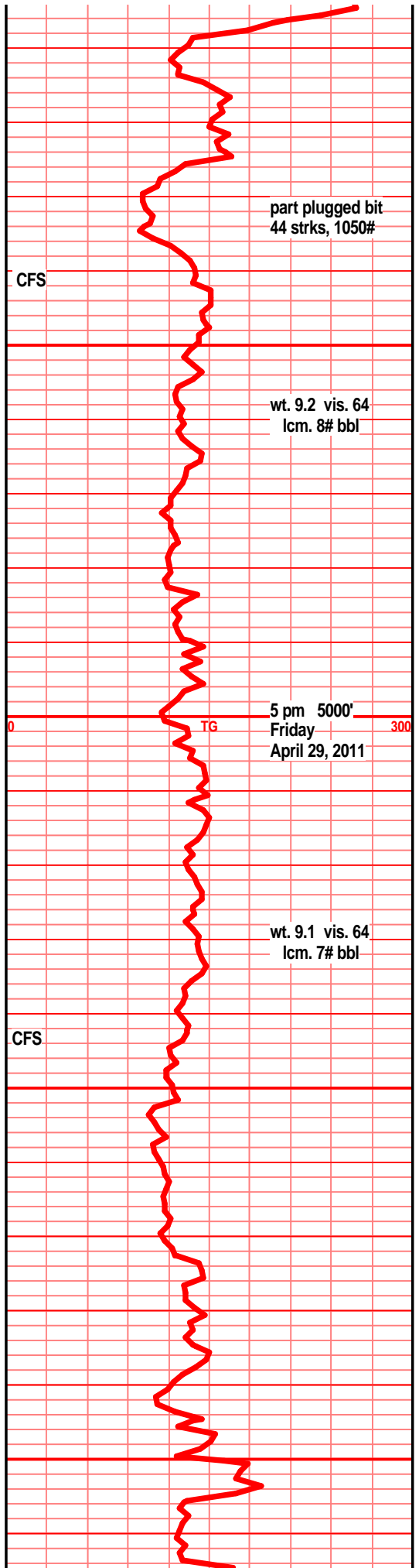
sst clr lt gry clstrs, f vf grnd, sub ang, mstly sub rded grns, w/srtd, f/cem, sub fria to tite, tr blkly hrd ang clstrs, tr pyritic fill, tr min fill,

sst clr lt gry/green clstrs, f vf grnd sub ang, mstly sub ang grns, w/srtd, f/cem, sub fria to tite, clay/min fill, tr glau, pyritic

sst clr lt gry clstrs, f vf grnd sub ang/sub rded grns, fair to prly srtd, f/w cem, sub fria to tite, min fill, pyritic in prt, dolo sd tan lt brn vf grnd w/rded grns, w/srtd, fria/soft gran, inter grn por, dolo xln fill, NS

shl drk gry green, teal green

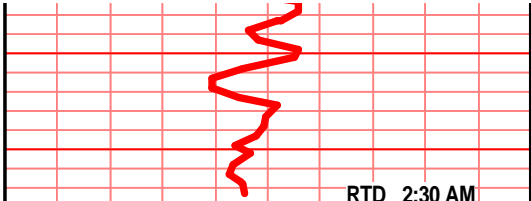
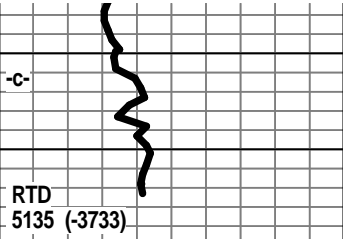
shl drk gry green, teal green, pyritic bands, slick hrd grsy wxy



shl green teal green, drk green, silty, slick, wxy
grsy pyritic

shl gry drk gry green, drk teal green, silty
gritty, snd grn inclu, pyritic in prt, wxy grsy text

RTD 2:30 AM
Saturday
April 30, 2011



5150

5200

5250

00

ROP (min/ft) 10
Gamma (API) 150

TG 300