

KEVIN L. KESSLER
CONSULTING PETROLEUM GEOLOGIST
(316) 522-7338

OPERATOR : MULL DRILLING COMPANY INC.

LEASE : DAVID WELL # : 1 - 16 X

LOCATION : 603' FSL & 599' FWL

SEC: 16 TWP : 17 S RGE : 23 W

COUNTY : NESS STATE : KANSAS

ELEVATION

KB : 2426

GL : 2421

MEASUREMENTS FROM
KB

CASING RECORD

SURFACE :

8 5/8" @ 220

PRODUCTION :

5 1/2" @ 4550

ELECTRICAL SURVEYS:

DIL

CNL / CDL

MICRO

SONIC

CONTRACTOR : W W DRILLING RIG # 10

COMM : 05 / 03 / 2011

RTD : 4550

SAMPLES SAVED FROM : 3700

GEOLOGICAL SUPERVISION FROM : 3600

MUD UP : 3500

COMP : 05 / 11 / 2011

LOG TD : 4548

TO: RTD

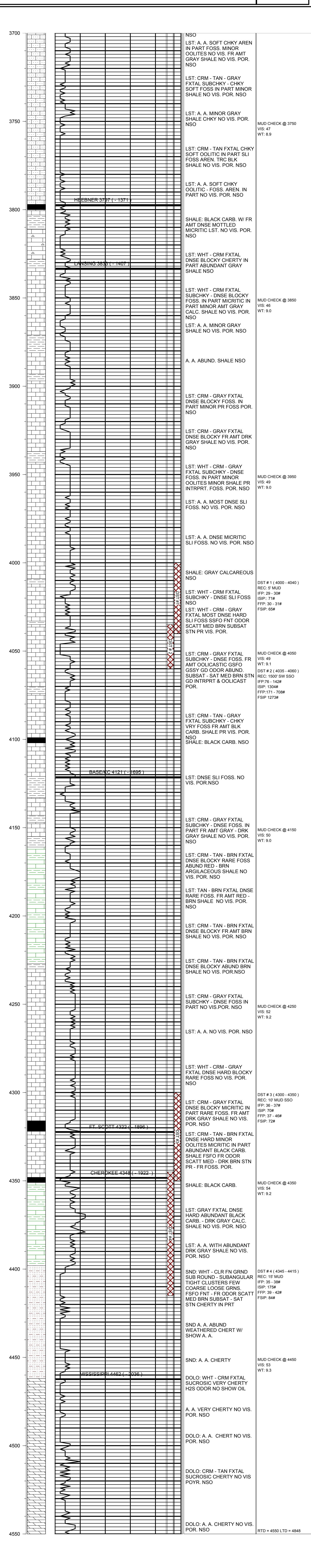
TO: RTD

TYPE MUD : CHEMICAL

FORMATION	TOP	LOG	DATUM	TOP	SAMPLE	DATUM	STRUCT. COMP.
HEEBNER	3793		- 1367	3797		- 1371	- 04
LANSING	3828		- 1402	3833		- 1407	- 03
BASE/KC	4116		- 1690	4121		- 1695	- 05
FT. SCOTT	4317		- 1891	4322		- 1896	- 04
CHEROKEE	4338		- 1912	4348		- 1922	- 01
MISSISSIPPI	4456		- 2030	4462		- 2036	- 20

REFERENCE WELL FOR STRUCTURAL COMPARISON :

MULL DRILLING CO INC. # 5 - 17 SNODGRASS SEC.17 - T 17S - R23W NESS COUNTY KANSAS



MUD CHECK @ 3750
 VIS: 47
 WT: 8.9

MUD CHECK @ 3850
 VIS: 46
 WT: 9.0

MUD CHECK @ 3950
 VIS: 49
 WT: 9.0

DST # 1 (4000 - 4040)
 REC: 5' MUD
 IFF: 29 - 30#
 ISIP: 71#
 FFP: 30 - 31#
 FSIP: 65#

MUD CHECK @ 4050
 VIS: 49
 WT: 9.1

DST # 2 (4035 - 4060)
 REC: 1500' SW SSO
 IFF: 76 - 142#
 ISIP: 1304#
 FFP: 171 - 708#
 FSIP: 1273#

MUD CHECK @ 4150
 VIS: 50
 WT: 9.0

MUD CHECK @ 4250
 VIS: 52
 WT: 9.2

DST # 3 (4300 - 4350)
 REC: 10' MUD SSO
 IFF: 36 - 37#
 ISIP: 37 - 46#
 FFP: 39 - 42#
 FSIP: 72#

MUD CHECK @ 4350
 VIS: 54
 WT: 9.2

DST # 4 (4345 - 4415)
 REC: 15' MUD
 IFF: 35 - 38#
 ISIP: 175#
 FFP: 39 - 42#
 FSIP: 64#

MUD CHECK @ 4450
 VIS: 53
 WT: 9.3

RTD = 4550 LTD = 4848

COMMENTS:

5 1/2" PRODUCTION CASING WAS SET TO
FURTHER EVALUATE THE PRODUCTIVITY OF THIS WELL

KEVIN L. KESSLER