



**Pro-Stake LLC**  
 Oil Field & Construction Site Staking  
 P.O. Box 2324  
 Garden City, Kansas 67846  
 Office/Fax: (620) 276-6159  
 Cell: (620) 272-1499



**k082211-y**  
 PLAT NO.

**9529**  
 INVOICE NO.

**Berexco LLC**

OPERATOR

**Haskell County, KS**  
 COUNTY

**Tate "A" #2-12**

LEASE NAME

**2220' FNL - 335' FEL**  
 LOCATION SPOT

**12 27s 33w**  
 Sec. Twp. Rng.

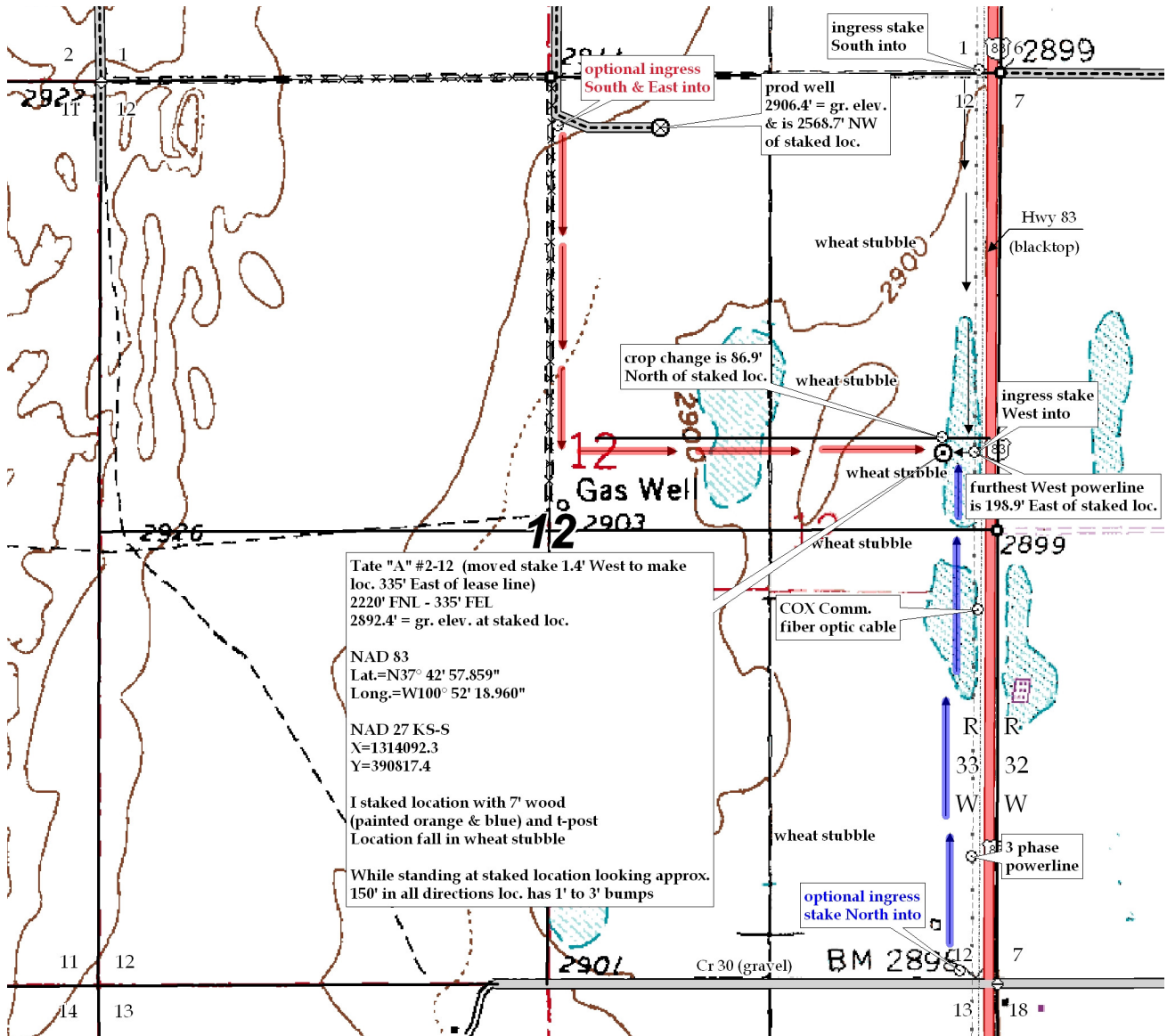
SCALE: **1" = 1000'**  
 DATE STAKED: **Aug. 19<sup>th</sup>, 2011**  
 MEASURED BY: **Luke R.**  
 DRAWN BY: **Luke R.**  
 AUTHORIZED BY: **Greg K.**

GR. ELEVATION: **2892.4'**

**Directions:** From approx. 1 mile West of Sublette Ks at the intersection of Hwy 83 & Hwy 56 - Now go 17.1 miles North on Hwy 83 to the NE corner of section 12-27s-33w & ingress stake South into - Now go 50' West - Now go 2220' South through wheat stubble to ingress stake West into - Now go approx. 200' West through wheat stubble into staked location.

**Final ingress must be verified with land owner or Operator.**

*This drawing does not constitute a monumented survey or a land survey plat.*  
*This drawing is for construction purposes only.*



Tate "A" #2-12 (moved stake 1.4' West to make loc. 335' East of lease line)  
 2220' FNL - 335' FEL  
 2892.4' = gr. elev. at staked loc.  
 NAD 83  
 Lat.=N37° 42' 57.859"  
 Long.=W100° 52' 18.960"  
 NAD 27 KS-S  
 X=1314092.3  
 Y=390817.4  
 I staked location with 7" wood (painted orange & blue) and t-post  
 Location fall in wheat stubble  
 While standing at staked location looking approx. 150' in all directions loc. has 1' to 3' bumps