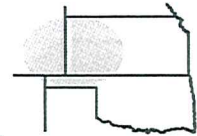


Pro-Stake LLC
 Oil Field & Construction Site Staking
 P.O. Box 2324
 Garden City, Kansas 67846
 Office/Fax: (620) 276-6159
 Cell: (620) 272-1499



k082211-y
 PLAT NO.

9529
 INVOICE NO.

Berexco LLC
 OPERATOR

Tate "A" #2-12
 LEASE NAME

Haskell County, KS
 COUNTY

12 27s 33w
 Sec. Twp. Rng.

2220' FNL - 335' FEL
 LOCATION SPOT

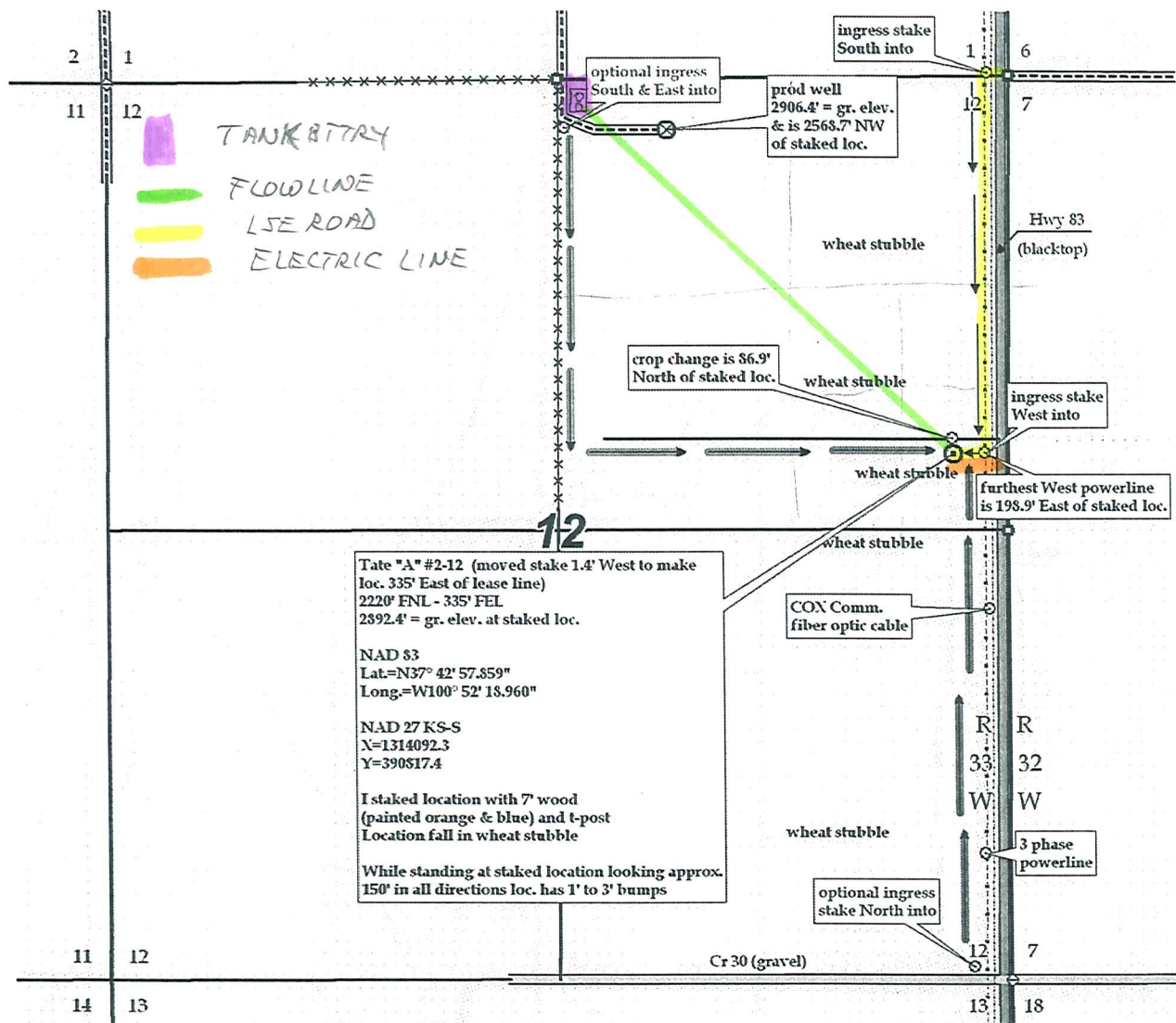
SCALE: 1" = 1000'
 DATE STAKED: Aug. 19th, 2011
 MEASURED BY: Luke R.
 DRAWN BY: Luke R.
 AUTHORIZED BY: Greg K.

GR. ELEVATION: 2892.4'



Directions: From approx. 1 mile West of Sublette Ks at the intersection of Hwy 83 & Hwy 56 – Now go 17.1 miles North on Hwy 83 to the NE corner of section 12-27s-33w & ingress stake South into – Now go 50' West – Now go 2220' South through wheat stubble to ingress stake West into – Now go approx. 200' West through wheat stubble into staked location.
 Final ingress must be verified with land owner or Operator.

*This drawing does not constitute a monumented survey or a land survey plat.
 This drawing is for construction purposes only.*



Tate "A" #2-12 (moved stake 1.4' West to make loc. 335' East of lease line)
 2220' FNL - 335' FEL
 2892.4' = gr. elev. at staked loc.

NAD 83
 Lat.=N37° 42' 57.859"
 Long.=W100° 52' 18.960"

NAD 27 KS-S
 X=1314092.3
 Y=390517.4

I staked location with 7" wood (painted orange & blue) and t-post
 Location fall in wheat stubble

While standing at staked location looking approx. 150° in all directions loc. has 1' to 3' bumps