

API # 15-039-21135
GEOLOGICAL REPORT
 DRILLING TIME & SAMPLE LOG

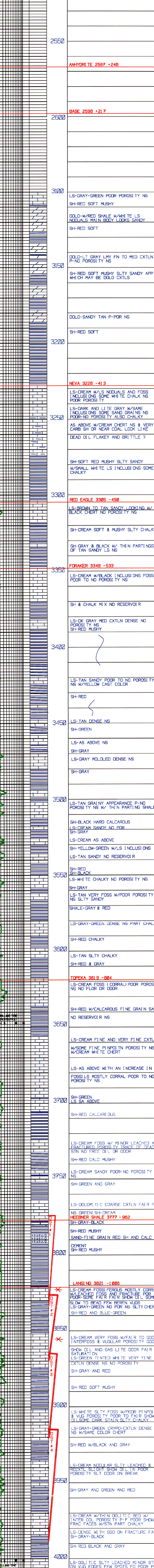
REPORT PREPARED BY KENT OBERLIER/VED/0081

COMPANY **MURFIN DRUG CO.**
 LEASE **MAYWEN UNIT #1-1B**
 FIELD _____
 LOCATION **1420' FSL & 600' FWL**
 SEC. **18** TWP. **2S** RGE. **29W**
 COUNTY **DECATUR** STATE **KANSAS**
 CONTRACTOR **MURFIN RIG #3**
 SPUD **07/14/11** COMP **07/22/11**
 SAMPLES SAVED FROM **3100** TO **TD**
 REPORT PREPARED BY **KENT OBERLIER/VED/0081**

ANHYDRITE	2567+248	2564+251	E LOG	DATE
BASE ANHY	2568+217	2564+221		
NEVA	3228-413	3227-412		
RED EAGLE	3305-490	3299-483		
FORAKER	3348-533	3343-528		
TOPEKA	3619-804	3615-800		
LANSING A	3777-962	3774-958		
LANSING B	3821-1006	3822-1002		
LANSING C	3850-1170	3845-1178		
TD	4060	4059		

ELEVATION **K.B. 2815**
 D.F. _____
 G.L. **2810**
 DEPTH MEASURED FROM KB **4059** D.H. **4060**
 Surface **2808.8 5/8"**
 Production **KNOWITZ 14**
 Electric Log **CNL/SCD BHCS**
 DI/L/MEL

A	GR	B	also	C	also



FORMATION	SAMPLE	E LOG	DATE
ANHYDRITE	2567+248	2564+251	
BASE ANHY	2568+217	2564+221	
NEVA	3228-413	3227-412	
RED EAGLE	3305-490	3299-483	
FORAKER	3348-533	3343-528	
TOPEKA	3619-804	3615-800	
LANSING A	3777-962	3774-958	
LANSING B	3821-1006	3822-1002	
LANSING C	3850-1170	3845-1178	
TD	4060	4059	