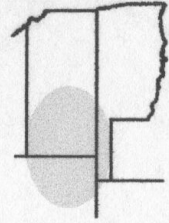


Pro-Stake LLC
Oil Field & Construction Site Staking
P.O. Box 2324
Garden City, Kansas 67846
Office/Fax: (620) 276-6159
Cell: (620) 272-1499



q082211-f
 PLAT NO.

9532
 INVOICE NO.

American Warrior, Inc.

OPERATOR

Linlor A 5

LEASE NAME

Ford County, KS

COUNTY

14 27s Twp.
14 27s Rtg.

1166' FSL - 335' FEL

LOCATION SPOT

SCALE: **1" = 1000'**

GR. ELEVATION: **2406.6'**

DATE: **Aug. 16th, 2011**

MEASURED BY: **Ben R.**

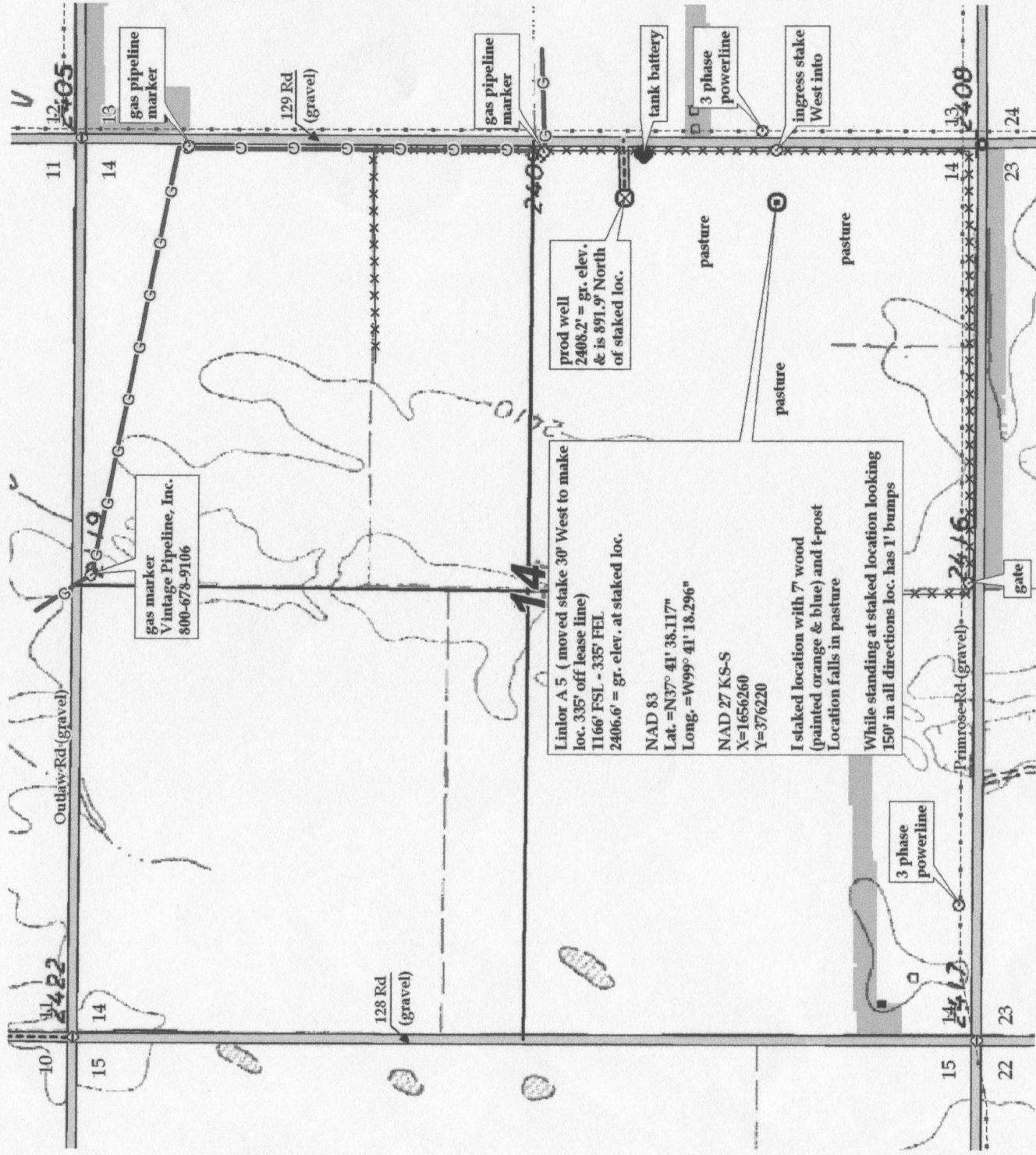
DRAWN BY: **Luke R.**

AUTHORIZED BY: **Cecil O. & John E.**



Directions: From the center of Ford Ks. at the intersection of Hwy 400/Main St & 9th St. - Now go 1.9 mile North on Hwy 400 - Now go 3.5 mile East on Ridge Rd/Liberty Rd - Now go 2 miles North on 129 Rd to the SE corner of section 14-27s-22w - Now go 0.2 mile North on 129 Rd to ingress stake West into - Now go 335' West through pasture into staked location.
Final ingress must be verified with land owner or Operator.

This drawing does not constitute a monumented survey or a land survey plat.
This drawing is for construction purposes only.



Linlor A 5 (moved stake 30' West to make loc. 335' off lease line)
 1166' FSL - 335' FEL
 2406.6' = gr. elev. at staked loc.
 NAD 83
 Lat. = N37° 41' 38.117"
 Long. = W99° 41' 18.296"

NAD 27 KS-S
 X=1656260
 Y=376220

I staked location with 7' wood (painted orange & blue) and t-post
 Location falls in pasture

While standing at staked location looking 150° in all directions loc. has 1' bumps

prod well
 2408.2' = gr. elev.
 & is 891.9' North
 of staked loc.

3 phase powerline

pasture

pasture

pasture

pasture

pasture

pasture

pasture

pasture

Gate

3 phase powerline

tank battery

3 phase powerline

ingress stake West into

gas pipeline marker

gas pipeline marker

129 Rd (gravel)

128 Rd (gravel)

Outlaw Rd (gravel)

12408

24

23

15

22

12405

11

14

13

12

11

14

13

12

11

14

13

12

11

14

13

12

11

14

13

12

11

14

13

12

11

14

13

12

11

14

13

12

11

14

13

12

11

14

13

12

11

14

13

12

11

14

13

12

11

14

13

12

11

14

13

12

11

14

13

12

11

14

13

12

11

14

13

12

11

14

13

12

11

14

13

12

11

14

13

12

11

14

13

12